

**US Army Corps of Engineers**  
 San Francisco District  
 1455 Market Street  
 San Francisco, CA 94103

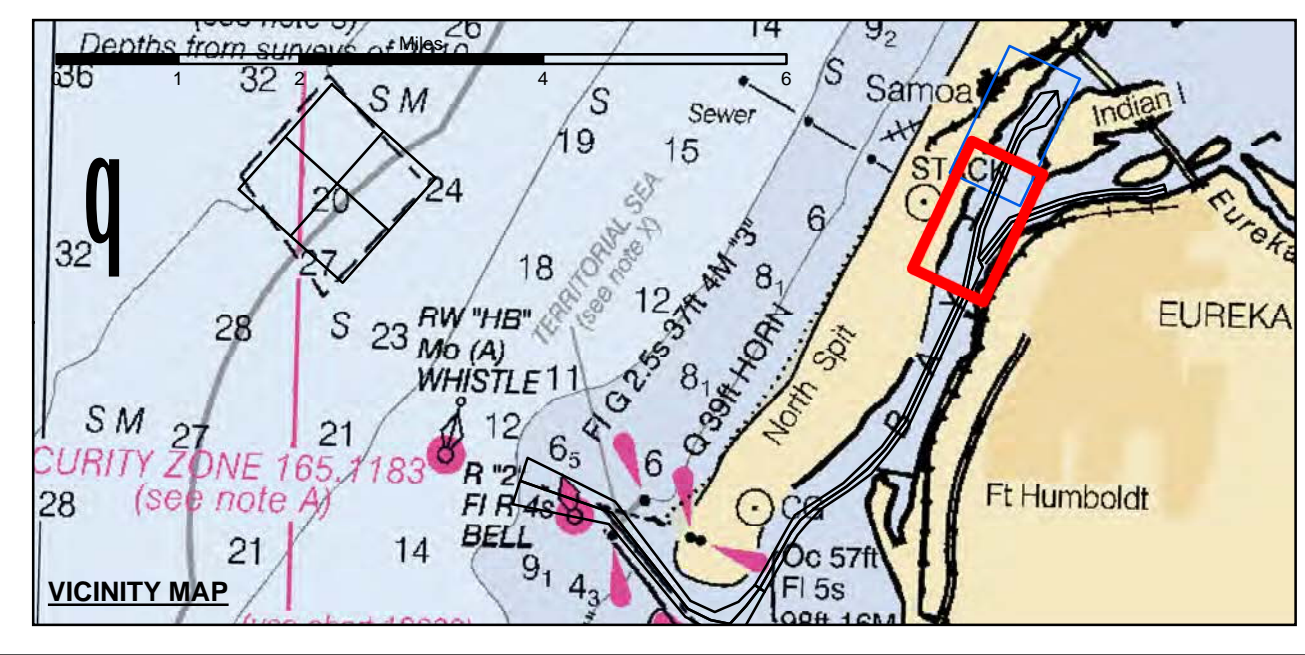
**DISCLAIMER**  
 The United States Government furnishes this information as a service to the public. It is not intended to be used for any purpose other than that for which it was prepared. The user is responsible for the results of any application of the data for other than its intended purpose. The user is responsible for the results of any application of the data for other than its intended purpose. The user is responsible for the results of any application of the data for other than its intended purpose.

Chart Date:	Mar 07, 2017
Designed by:	PDT
Drawn by:	PDT
Surveyed By:	Plotted By: PDT
Checked By:	PDT
Approved:	Chief, Construction Branch

**HUMBOLDT COUNTY**  
**HUMBOLDT BAY**  
**SAMOA CHANNEL**  
**CONDITION SURVEY**  
 1-4 MARCH 2017

**Sheet Reference Number**  
 2 of 2

Angle Point	Easting	Northing
T8	5956047.79	2183225.93
T9	5957636.19	2187056.43
T0	5957683.59	2187647.53
T1	5958681.79	2188978.43
T2	5959681.79	2188378.43
T3	5959081.79	2187578.43
T4	5958421.69	2187381.23
T5	5958007.99	2186903.63
T6	5958425.99	2183093.63
C18	5958236.79	2183159.43
C19	5957823.09	2186979.43
C20	5958152.59	2187513.43
C21	5958681.79	2187878.43
C23	5959581.79	2189078.43



Federal Navigation Channel	Beacon, General	<b>Contours</b>
Shoaling Area	Obstruction Point	-38
Placement Area	Navigation Buoy	-37
Anchorage Area	Navigation Buoy	-36
Wreck Area	Shoalest Sounding*	-35
Submerged Wreck		-34
Angle Point		

**NOTES:**  
 DRAWINGS NOT TO BE USED AS NAVIGATION. ONLY CHANNEL CONDITION AT DATE OF SURVEY. THE LOCATION OF ALL NAVIGATION AIDS ARE BASED ON INFORMATION PROVIDED BY THE U.S. COAST GUARD. BUOY LOCATION REPRESENT THE POSITION OF THE SINKER ONLY.

SOUNDINGS ARE BASED ON THE DATUM OF MEAN LOWER LOW WATER AT THE LOCALITY.

PLANE GRID AND COORDINATES ARE BASED ON THE STATE OF CALIFORNIA COORDINATE SYSTEM, LAMBERT CONFORMAL PROJECTION, ZONE 1 NAD 83, CALIFORNIA, AS DESCRIBED IN SPECIAL PUBLICATION NO. 235, PUBLISHED BY THE NATIONAL OCEAN SURVEY.

PROJECT DEPTHS ARE AS FOLLOWS:  
 BAR & ENTRANCE CHANNEL = 48 FEET  
 NORTH BAY, SAMOA TO MILE 5.0 & = 38 FEET  
 EUREKA CHANNEL, FIELDS LANDING CHANNEL & MILE 5.0 TO 'N' STREET = 26 FEET

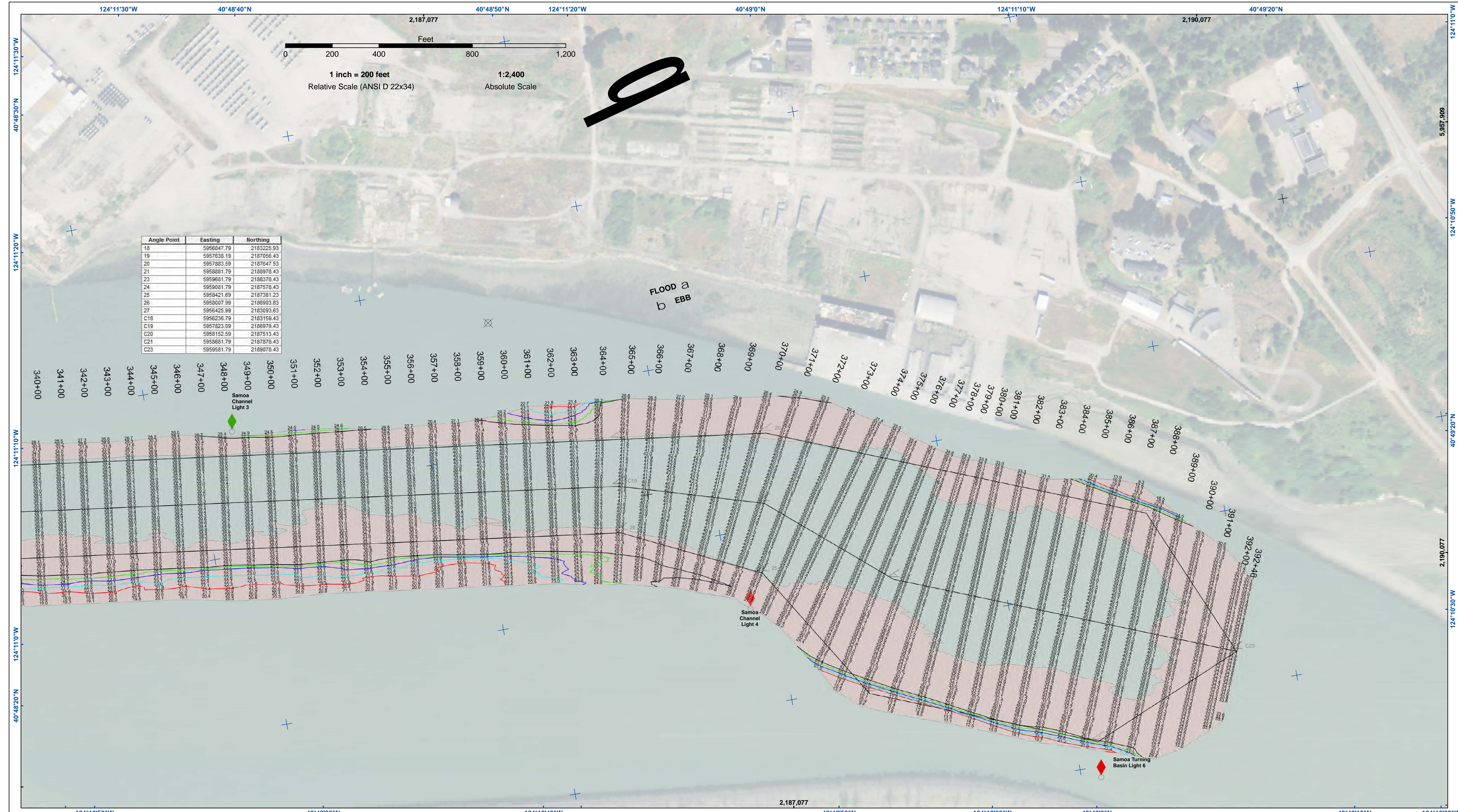
1:00 INDICATES THE NUMBER AND BEGINNING OF A LINE OF SOUNDINGS.  
 SOUNDINGS ARE BASED ON TIDE GAUGES REFERENCED TO U.S.C. & G.S.

Vertical and Horizontal Control:  
 NOAA Station: 941 8767 - North Spit, CA  
 Benchmark:  
 NO 11 1340 (PID: LV0359)  
 MLLW Elev: 4.251m

Tides:  
 RTK GPS, using GEOID12a and VDATUM  
 RTK elevations calibrated at 10.0ft nail at Coast Guard Station Humboldt Bay

Position:  
 RTK Positions





**US Army Corps of Engineers**  
 San Francisco District  
 1455 Market Street  
 San Francisco, CA 94103

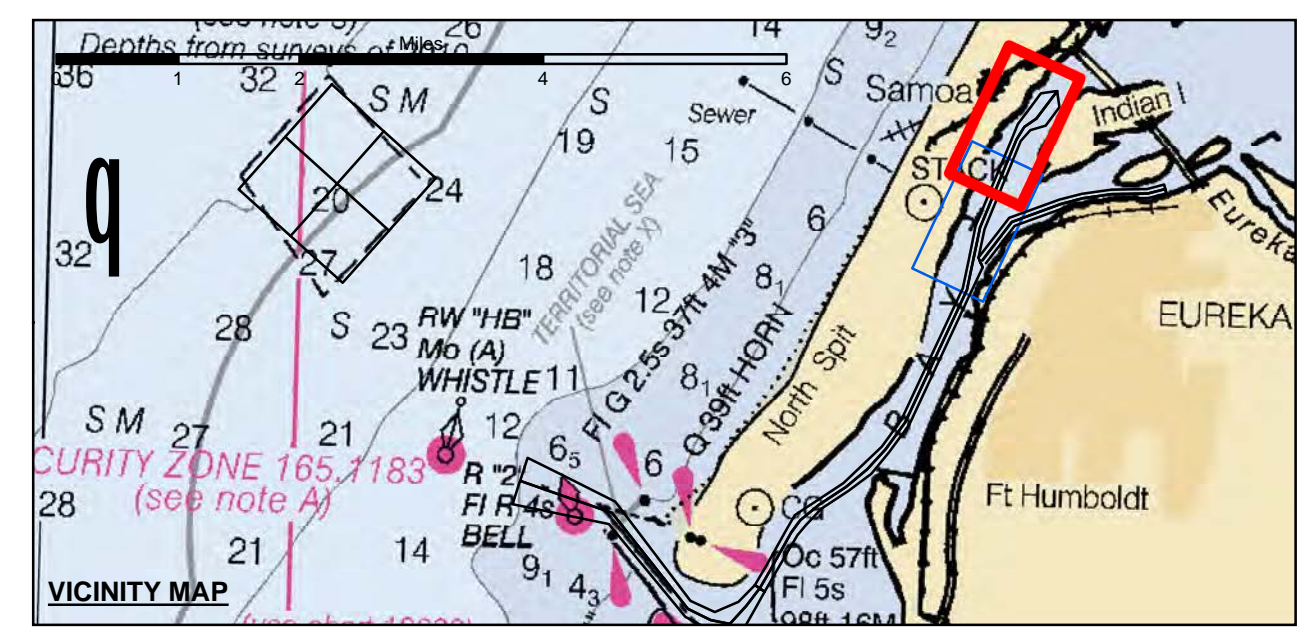
**DISCLAIMER**  
 The United States Government furnishes this information as a service to the public. It is not intended to be used for any purpose other than its intended purpose. The user is responsible for the results of any application of the data for other than its intended purpose. The United States Government makes no warranty, expressed or implied, concerning the accuracy, completeness, or reliability of the information furnished. The United States Government shall not be liable for any damages, including those resulting from the use of the information, whether or not such damages were foreseeable. These data belong to the Government. Therefore, the recipient may not transfer these data to others without also transferring this disclaimer.

Chart Date:	Mar 07, 2017
Designed by:	PDT
Drawn by:	PDT
Surveyed By:	JOHN C. MORROW
Plotted By:	PDT
Checked By:	PDT

CALIFORNIA  
 HUMBOLDT COUNTY  
**HUMBOLDT BAY  
 SAMOA CHANNEL  
 CONDITION SURVEY**  
 1-4 MARCH 2017

**Sheet  
 Number  
 1 of 2**

Angle Point	Easting	Northing
18	5956047.79	2183225.93
19	5957636.19	2187056.43
20	5957683.59	2187647.53
21	5958681.79	2188978.43
23	5959691.79	2188378.43
24	5959081.79	2187578.43
25	5958421.69	2187351.23
26	5958007.99	2186903.63
27	5958425.99	2183093.63
C18	5958236.79	2183159.43
C19	5957823.09	2186979.43
C20	5958152.59	2187513.43
C21	5958681.79	2187878.43
C23	5959581.79	2188078.43



Federal Navigation Channel	Beacon, General	<b>Contours</b>
Shoaling Area	Obstruction Point	-38
Placement Area	Navigation Buoy	-37
Anchorage Area	Navigation Buoy	-36
Wreck Area	Navigation Buoy	-35
Submerged Wreck	Shoalest Sounding*	-34
Angle Point		

**NOTES:**  
 DRAWINGS NOT TO BE USED AS NAVIGATION. ONLY CHANNEL CONDITION AT DATE OF SURVEY. THE LOCATION OF ALL NAVIGATION AIDS ARE BASED ON INFORMATION PROVIDED BY THE U.S. COAST GUARD. BUOY LOCATION REPRESENT THE POSITION OF THE SINKER ONLY.  
 SURVEYED BY THE CORPS OF ENGINEERS.  
 SOUNDINGS WERE TAKEN BY FATHOMETER AND ARE SHOWN TO THE NEAREST TENTHS OF A FOOT.  
 SOUNDINGS ARE BASED ON THE DATUM OF MEAN LOWER LOW WATER AT THE LOCALITY.  
 PLANE GRID AND COORDINATES ARE BASED ON THE STATE OF CALIFORNIA COORDINATE SYSTEM, LAMBERT CONFORMAL PROJECTION, ZONE 1 NAD 83, CALIFORNIA, AS DESCRIBED IN SPECIAL PUBLICATION NO. 235, PUBLISHED BY THE NATIONAL OCEAN SURVEY.  
 PROJECT DEPTHS ARE AS FOLLOWS:  
 BAR & ENTRANCE CHANNEL = 48 FEET  
 NORTH BAY, SAMOA TO MILE 5.0 & = 38 FEET  
 EUREKA CHANNEL, FIELDS LANDING CHANNEL & MILE 5.0 TO 'N' STREET = 26 FEET

1:00 INDICATES THE NUMBER AND BEGINNING OF A LINE OF SOUNDINGS.  
 SOUNDINGS ARE BASED ON TIDE GAUGES REFERENCED TO U.S.C. & G.S.  
 Vertical and Horizontal Control:  
 NOAA Station: 941 8767 - North Spit, CA  
 Benchmark:  
 NO 11 1940 (PID: LV0359)  
 MLLW Elev: 4.251m  
 Tides:  
 RTK GPS, using GEOID12a and VDATUM  
 RTK elevations calibrated at 10.0ft nail at Coast Guard Station Humboldt Bay  
 Position:  
 RTK Positions