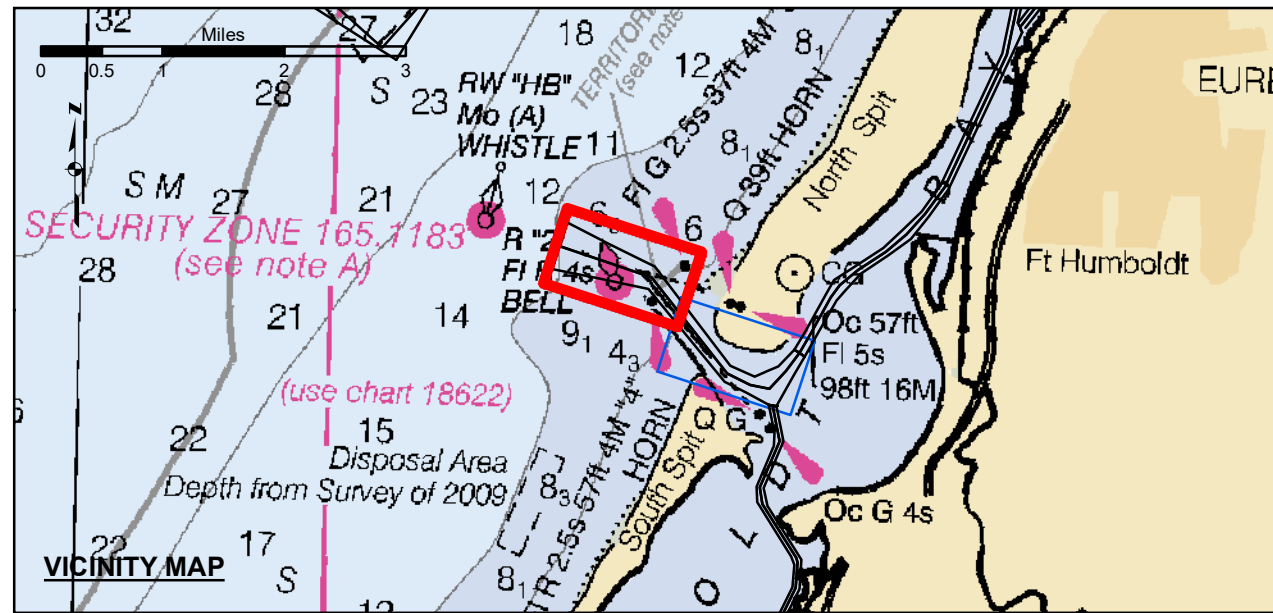


NAD 83 CENTERLINE ANGLE POINTS HUMBOLDT BAY (BAR & ENTRANCE)		
LINE PT	X	Y
C1	5936273.49	2172157.43
C2	5938147.59	2171508.43
C3	5940055.09	2170773.43
C4	5943553.39	2166602.43
C5	5944545.29	2166122.43
C6	5945370.39	2165957.23
C7	5946085.69	2165728.23
C8	5946899.99	2165508.33
C9	5947166.09	2165359.43
C10	5948049.99	2165917.43
C11	5949433.89	2170455.43
C12	5948233.79	2171119.43
C13	5950417.39	2171891.43
C14	5951329.29	2172055.43
C15	5952138.39	2173530.43
C16	5952989.89	2174706.43
C17	5955971.89	2180451.43
C18	5956236.79	2183159.43
C19	5957823.09	2189379.43
C20	5958152.59	2187513.43
C21	5958581.79	2187878.43
C22	5959281.79	2188678.43
C23	5959581.79	2189078.43

NAD 83 CHANNEL ANGLE POINTS HUMBOLDT BAY (BAR & ENTRANCE)					
LINE PT	X	Y	LINE PT	X	Y
1	5936596.69	2173163.63	24	5959081.79	2187578.43
2	5938385.39	2172268.83	25	5958421.69	2187381.23
3	5940404.09	2171258.93	26	5958007.99	2186903.83
4	5943566.09	2168944.43	27	5958425.99	2183093.83
5	5944727.49	2166468.93	28	5956165.59	2181842.03
6	5945239.99	2166690.33	29	5956346.69	2181424.83
7	5945752.39	2166911.73	30	5956566.39	2180383.43
8	5946464.03	2167631.33	31	5956165.09	2174604.63
9	5946953.59	2168479.53	32	5952300.39	2173413.53
10	5947931.59	2170042.13	33	5951516.79	2172459.63
11	5949193.03	2170679.33	34	5950525.69	2171724.13
12	5949124.59	2171287.03	35	5949343.09	2170952.03
13	5950308.09	2172059.13	36	5948674.79	2170232.13
14	5951141.79	2172853.23	37	5948301.49	2169794.33
15	5951976.39	2173548.23	38	5947895.59	2169204.23
16	5952816.79	2174808.43	39	5946907.49	2167381.23
17	5955484.79	2180520.43	40	5946431.39	2166537.23
18	5956047.79	2183225.39	41	5945672.89	2165192.43
19	5957336.19	2187058.43	42	5945354.09	2163554.63
20	5957883.59	2187647.53	43	5944363.09	2162776.33
21	5958881.79	2188378.43	44	5943441.39	2162611.63
22	5959581.79	2189078.43	45	5941215.19	2170287.33
23	5959681.79	2188378.43	46	5937908.79	2170746.43
			47	5935950.29	2171151.43



Federal Navigation Channel

Shoaling Area

Placement Area

Anchorage Area

Wreck Area

Submerged Wreck

Zone_I_Angle_Points

Beacon, General

Obstruction Point

Navigation Buoy

Navigation Buoy

Shoalest Sounding*

Contours

-48

-47

-46

-45

-44

NOTES:
DRAWINGS NOT TO BE USED AS NAVIGATION. ONLY CHANNEL CONDITION AT DATE OF SURVEY. THE LOCATION OF ALL NAVIGATION AIDS ARE BASED ON INFORMATION PROVIDED BY THE U.S. COAST GUARD. BUOY LOCATION REPRESENT THE POSITION OF THE SINKER ONLY.

SURVEYED BY THE CORPS OF ENGINEERS.

SOUNDING FOR THE CHANNEL MEASURED WITH MULTIBEAM ECHOSOUNDER AND ARE SHOWN TO THE NEAREST TENTH FOOT.

SOUNDINGS ARE BASED ON THE DATUM OF MEAN LOWER LOW WATER AT THE LOCALITY.

PLANE GRID AND COORDINATES ARE BASED ON THE STATE OF CALIFORNIA COORDINATE SYSTEM, LAMBERT CONFORMAL PROJECTION, ZONE 1 NAD 83, CALIFORNIA, AS DESCRIBED IN SPECIAL PUBLICATION NO. 235, PUBLISHED BY THE NATIONAL OCEAN SURVEY.

PROJECT DEPTHS ARE AS FOLLOWS:
BAR & ENTRANCE CHANNEL = 48 FEET
NORTH BAY, SAMOA TO MILE 5.0 & = 38 FEET
EUREKA CHANNEL, FIELDS LANDING CHANNEL & MILE 5.0 TO "N" STREET = 26 FEET

1:00 INDICATES THE NUMBER AND BEGINNING OF A LINE OF SOUNDINGS.
SOUNDINGS ARE BASED ON TIDE GAUGES REFERENCED TO U.S.C. & G.S.

Vertical and Horizontal Control:
NOAA Station: 941 8787 - North Spit, CA

Benchmark:
NO 11 1940 (PID: LV0359)
MLW Elev: 4.251m

Tides:
RTK GPS, using GEOID12a and VDATUM
RTK elevations calibrated at 10.0ft nail at Coast Guard Station Humboldt Bay

Position:
RTK Positions

US Army Corps of Engineers

San Francisco District

450 Golden Gate Avenue

San Francisco, CA 94102

DISCLAIMER

Access Constraints: The United States Government furnishes this information for your use only. It is not to be used for any purpose other than that for which it was provided. The user is responsible for the results of any application of the data for other than its intended purpose. Engineers activity and indicates the general existing conditions. As such, it is only valid for its intended use, content, time and accuracy specifications. The user is responsible for the results of any application of the data for other than its intended purpose.

Access Constraints: The United States Government furnishes this information for your use only. It is not to be used for any purpose other than that for which it was provided. The user is responsible for the results of any application of the data for other than its intended purpose. Engineers activity and indicates the general existing conditions. As such, it is only valid for its intended use, content, time and accuracy specifications. The user is responsible for the results of any application of the data for other than its intended purpose.

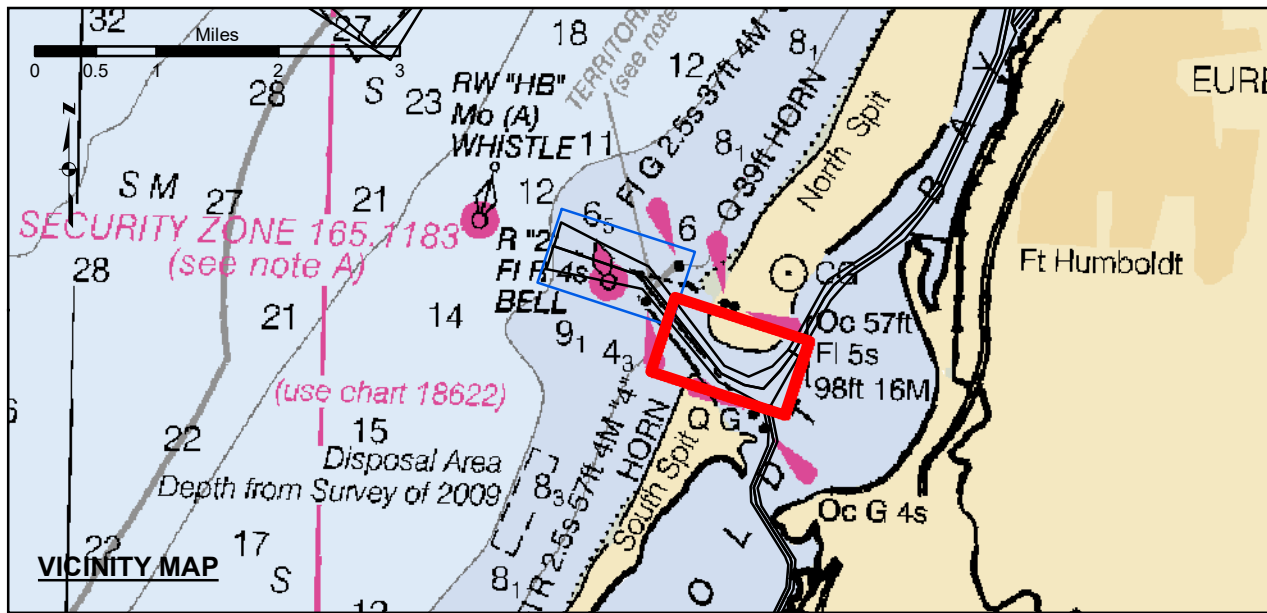
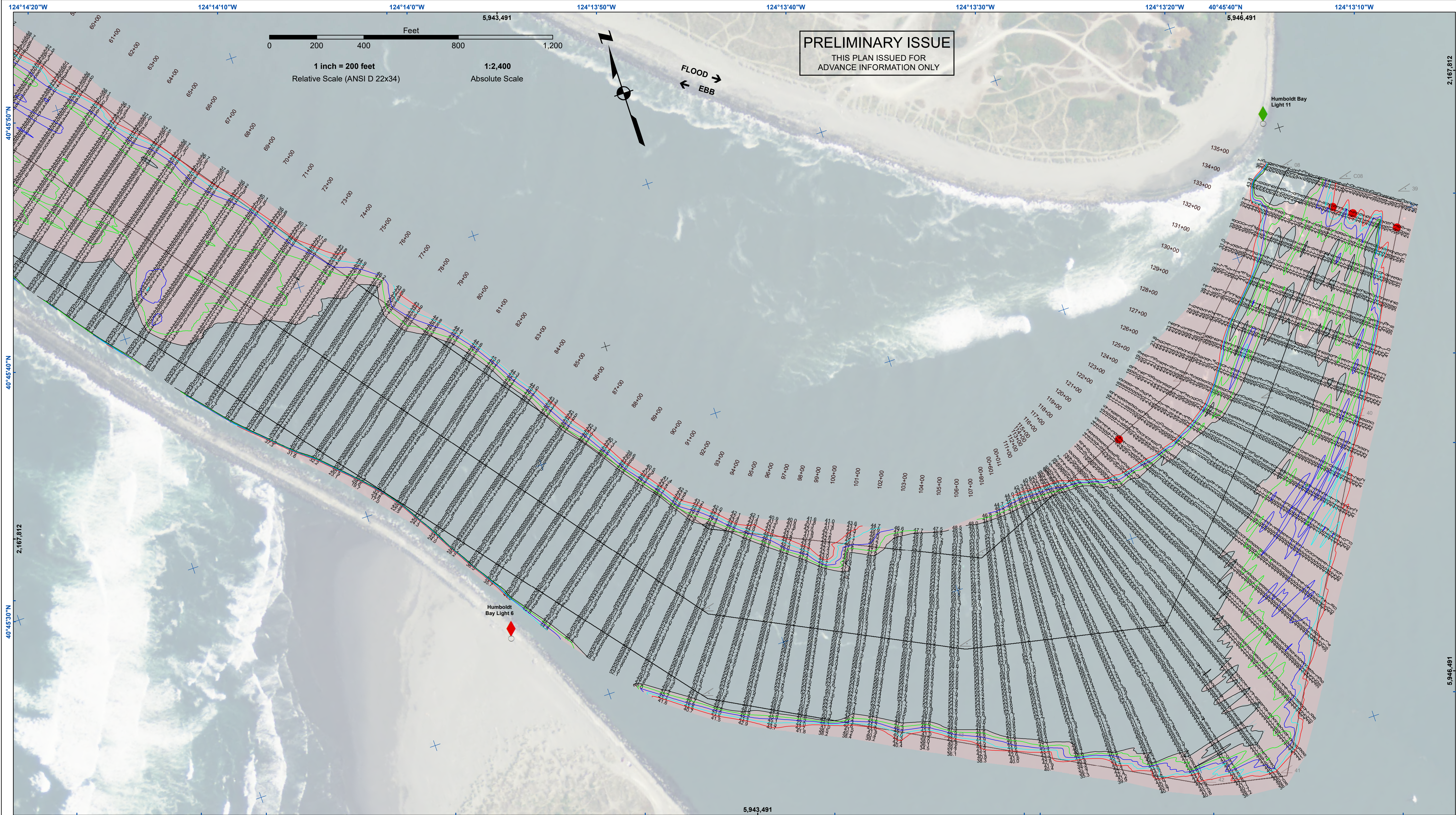
PREPARED UNDER THE DIRECTION OF TIMOTHY W. SHEBESTA LT COLONEL, C.E. DISTRICT ENGINEER	Surveyed By:	Chart Date:
Submitted: Hydro Survey Team Leader	Plotted By:	Jul 16, 2024
Recommended: Chief, Hydro Survey Section	Checked By:	Designed by:
Approved: Chief Construction Branch	PDT	Drawn by:
	PDT	PDT

CALIFORNIA

HUMBOLDT COUNTY

HUMBOLDT BAY
BAR & ENTRANCE CHANNEL
POST-DREDGE SURVEY
11 JULY 2024

Sheet
Reference
Number
1 of 2



Federal Navigation Channel

Shoaling Area

Placement Area

Anchorage Area

Wreck Area

Submerged Wreck

Zone_I_Angle_Points

Beacon, General

Obstruction Point

Navigation Buoy

Navigation Buoy

Shoalest Sounding*

Contours

-48

-47

-46

-45

-44

NOTES:
DRAWINGS NOT TO BE USED AS NAVIGATION. ONLY CHANNEL CONDITION AT DATE OF SURVEY. THE LOCATION OF ALL NAVIGATION AIDS ARE BASED ON INFORMATION PROVIDED BY THE U.S. COAST GUARD. BUOY LOCATION REPRESENT THE POSITION OF THE SINKER ONLY.

SURVEYED BY THE CORPS OF ENGINEERS.

SOUNDING FOR THE CHANNEL MEASURED WITH MULTIBEAM ECHOSOUNDER AND ARE SHOWN TO THE NEAREST TENTH FOOT.

SOUNDINGS ARE BASED ON THE DATUM OF MEAN LOWER LOW WATER AT THE LOCALITY.

PLANE GRID AND COORDINATES ARE BASED ON THE STATE OF CALIFORNIA COORDINATE SYSTEM, LAMBERT CONFORMAL PROJECTION, ZONE 1 NAD 83, CALIFORNIA, AS DESCRIBED IN SPECIAL PUBLICATION NO. 235, PUBLISHED BY THE NATIONAL OCEAN SURVEY.

PROJECT DEPTHS ARE AS FOLLOWS:
BAR & ENTRANCE CHANNEL = 48 FEET
NORTH BAY, SAMOA TO MILE 5.0 & = 38 FEET
EUREKA CHANNEL, FIELDS LANDING CHANNEL & MILE 5.0 TO "N" STREET = 26 FEET

1:00 INDICATES THE NUMBER AND BEGINNING OF A LINE OF SOUNDINGS.

SOUNDINGS ARE BASED ON TIDE GAUGES REFERENCED TO U.S.C. & G.S.

Vertical and Horizontal Control:
NOAA Station: 941 6787 - North Spit, CA

Benchmark:
NO 11 1940 (PID: LV0359)
MLLW Elev: 4.251m

Tides:
RTK GPS, using GEOID12a and VDATUM
RTK elevations calibrated at 10.0ft nail at Coast Guard Station Humboldt Bay

Position:
RTK Positions

US Army Corps of Engineers

San Francisco District

450 Golden Gate Avenue

San Francisco, CA 94102

DISCLAIMER

The data represents the results of data collected by the U.S. Army Corps of Engineers. Engineers activity and indicates the general existing conditions. As such, it is only valid for its intended use, content time and accuracy specifications. The user is responsible for the results of any of the application of the data for other than its intended purpose. The U.S. Army Corps of Engineers makes no warranty, expressed or implied, concerning the accuracy, completeness, reliability, usability or suitability for any particular purpose of the information. The user is responsible for the results of any use of the information. These data belong to the Government. Therefore the user is not to be held responsible for any and all other use of the information. The report may be used for other than its intended purpose. The report may be used for other than its intended purpose. These data to others without also transferring this Disclaimer.

PREPARED UNDER THE DIRECTION OF

TIMOTHY W. SHEBESTA

LT COLONEL, C.E. DISTRICT ENGINEER

Submitted:

Hydro Survey Team Leader

Recommended:

Chief, Hydro Survey Section

Approved:

Chief Construction Branch

Surveyed By:

Plotted By:

PDT

Checked By:

PDT

Chart Date:

Jul 16, 2024

Designed by:

Drawn by:

PDT

CALIFORNIA

HUMBOLDT COUNTY

HUMBOLDT BAY

BAR & ENTRANCE CHANNEL

POST-DREDGE SURVEY

11 JULY 2024

Sheet

Number

2 of 2