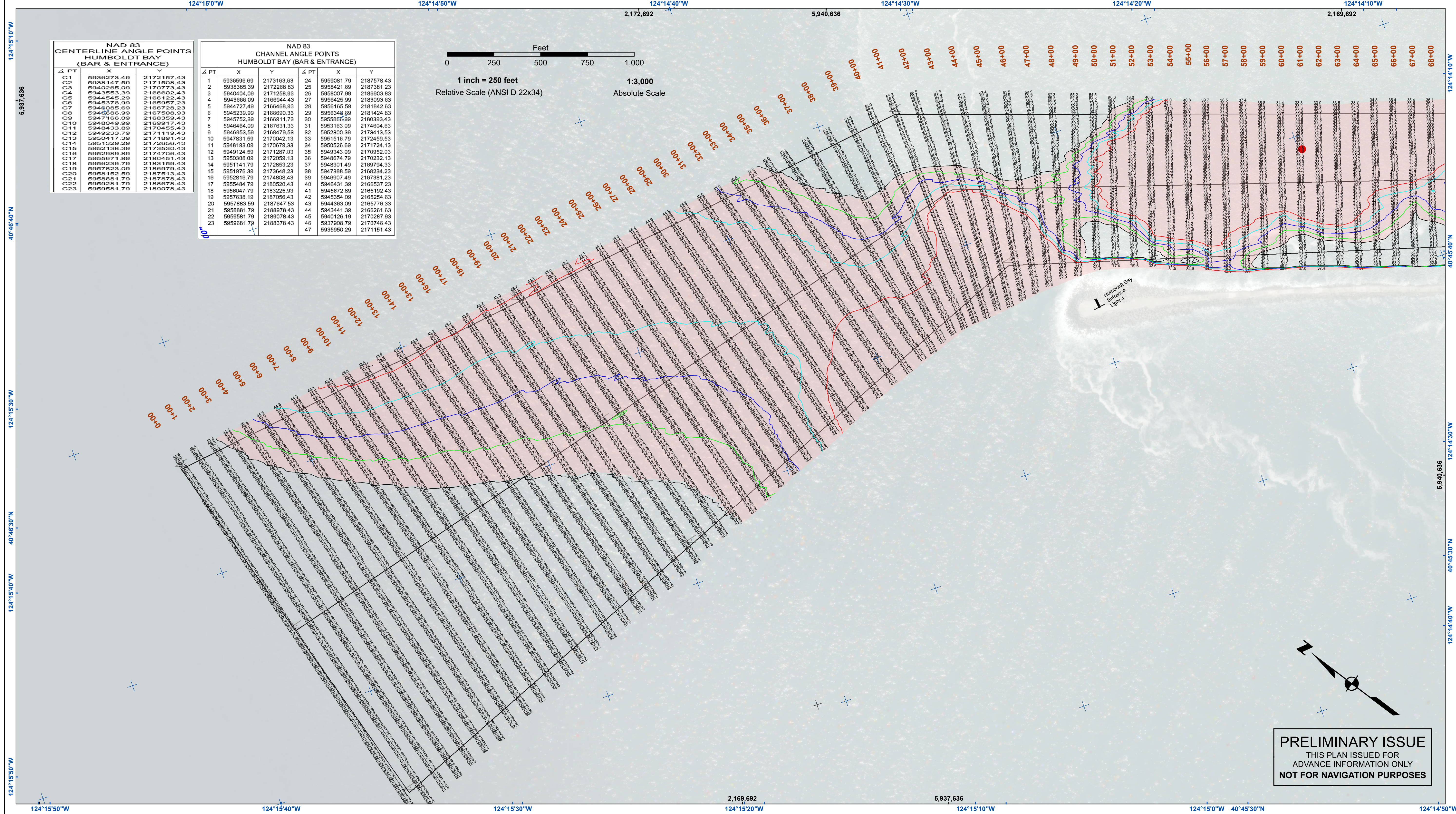


NAD 83 CENTERLINE ANGLE POINTS HUMBOLDT BAY (BAR & ENTRANCE)

Δ PT	X	Y
C1	5936273.49	2172157.43
C2	5938147.59	2171508.43
C3	5940265.09	2170773.43
C4	5943553.39	2169902.43
C5	5945545.29	2169122.43
C6	5945370.99	2168957.23
C7	5946085.09	2168728.23
C8	5946686.99	2168508.93
C9	5947168.09	2168359.43
C10	5948049.99	2168017.43
C11	5948433.89	2167455.43
C12	5949233.79	2167119.43
C13	5950417.39	21671891.43
C14	5951329.29	2167265.43
C15	5952138.39	2167350.43
C16	5952989.89	2167470.43
C17	5955671.89	2168041.43
C18	5956236.79	21683159.43
C19	5957823.09	2168979.43
C20	5958152.59	21687513.43
C21	5958681.79	21687878.43
C22	5959281.79	2168678.43
C23	5959581.79	2168078.43

NAD 83 CHANNEL ANGLE POINTS HUMBOLDT BAY (BAR & ENTRANCE)

Δ PT	X	Y	Δ PT	X	Y
1	5936596.69	2173163.63	24	5959081.79	2187578.43
2	5936365.39	2172208.83	25	5959421.89	2187381.23
3	5940404.09	2171258.93	26	5958007.99	2186903.83
4	5943666.09	2169944.43	27	5956425.99	2183093.63
5	5944727.49	2168468.93	28	5956165.59	2181842.63
6	5945239.99	2166690.33	29	5956348.69	2181424.83
7	5945752.39	2165911.73	30	5956565.99	2180939.43
8	5946464.09	2167631.33	31	5956163.09	2174604.63
9	5946953.59	2168479.53	32	5952300.39	2173413.53
10	5947831.59	2170042.13	33	5951516.79	2172459.53
11	5948193.09	2170679.53	34	5950526.69	2171724.13
12	5949124.59	2171287.03	35	5949343.09	2170852.03
13	5950308.09	2172059.13	36	5948674.79	2170232.13
14	5951141.79	2172853.23	37	5948301.49	2169794.33
15	5951976.39	2173648.23	38	5947988.59	2169234.23
16	5952816.79	2174406.43	39	5946997.49	2167981.23
17	5954394.79	2180520.43	40	5946431.39	2168537.23
18	5956047.79	2183225.93	41	5945672.89	2165192.43
19	5957638.19	2187056.43	42	5945354.09	2165254.63
20	5957883.59	2187647.53	43	5944363.09	2165776.33
21	5958981.79	2188978.43	44	5943441.39	2165261.63
22	5959581.79	2189078.43	45	5940126.19	2170287.93
23	5959581.79	2188378.43	46	5937908.79	2170746.43
			47	5935950.29	2171151.43



DISCLAIMER
 The United States Government furnishes this information as a service to the public. It is not intended to be used for navigation purposes. The user is responsible for the accuracy of the data for other than its intended purpose. The user is responsible for the accuracy of the data for other than its intended purpose. The user is responsible for the accuracy of the data for other than its intended purpose.

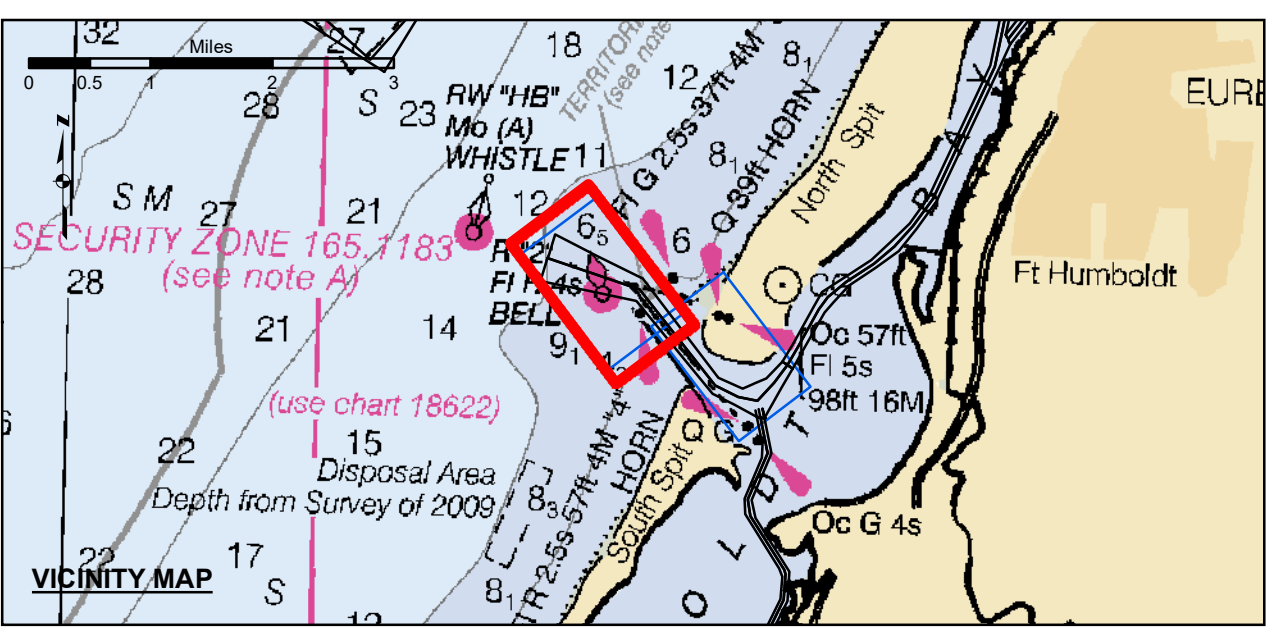
PREPARED UNDER THE DIRECTION OF
TIMOTHY W. SHEBESTA
 LT COLONEL, C.E., DISTRICT ENGINEER

Submittal:	Technical Services Section Leader
Recommended:	Chief, Technical Services Section
Approved:	Chief, Geospatial Branch

Surveyed By:	Plotted By:	Checked By:	Drawn by:
PDT	PDT	PDT	PDT

Chart Date:	Mar 13, 2025
Designed by:	PDT
Drawn by:	PDT

PRELIMINARY ISSUE
 THIS PLAN ISSUED FOR
 ADVANCE INFORMATION ONLY
 NOT FOR NAVIGATION PURPOSES



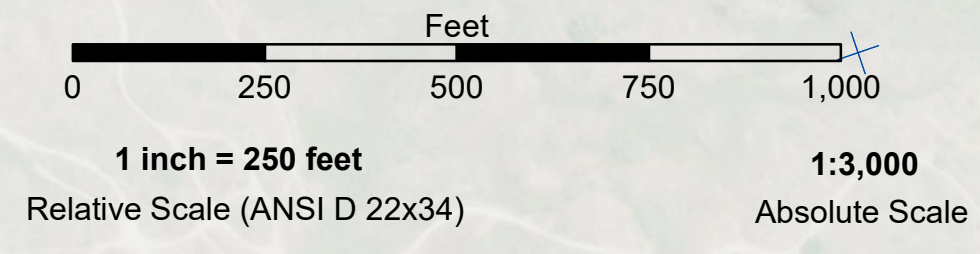
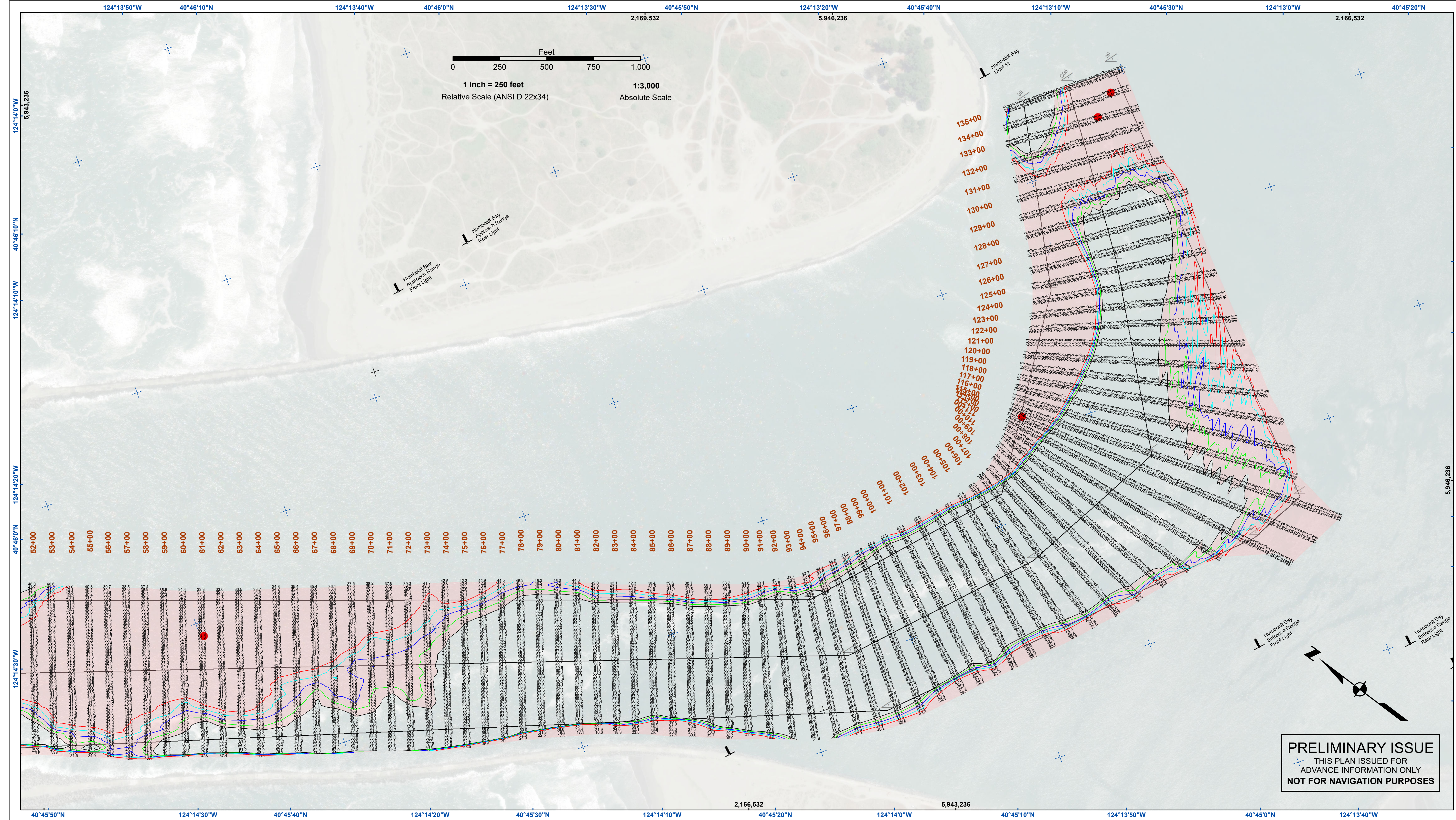
Federal Navigation Channel	Beacon, General	Contours
Shoaling Area	Obstruction Point	-48
Placement Area	Navigation Buoy	-47
Anchorage Area	Navigation Buoy	-46
Wreck Area	Shoalest Sounding*	-45
Submerged Wreck		-44
Zone_I_Angle_Points		

NOTES:
 DRAWINGS NOT TO BE USED AS NAVIGATION. ONLY CHANNEL CONDITION AT DATE OF SURVEY. THE LOCATION OF ALL NAVIGATION AIDS ARE BASED ON INFORMATION PROVIDED BY THE U.S. COAST GUARD. BUOY LOCATION REPRESENT THE POSITION OF THE SINKER ONLY.
 SURVEYED BY THE CORPS OF ENGINEERS.
 SOUNDING FOR THE CHANNEL MEASURED WITH MULTIBEAM ECHOSOUNDER AND ARE SHOWN TO THE NEAREST TENTH FOOT.
 SOUNDINGS ARE BASED ON THE DATUM OF MEAN LOWER LOW WATER AT THE LOCALITY.
 PLANE GRID AND COORDINATES ARE BASED ON THE STATE OF CALIFORNIA COORDINATE SYSTEM, LAMBERT CONFORMAL PROJECTION, ZONE I NAD 83, CALIFORNIA, AS DESCRIBED IN SPECIAL PUBLICATION NO. 235, PUBLISHED BY THE NATIONAL OCEAN SURVEY.
 PROJECT DEPTHS ARE AS FOLLOWS:
 BAR & ENTRANCE CHANNEL = 48 FEET
 NORTH BAY, SAMOA TO MILE 5.0 & = 38 FEET
 EUREKA CHANNEL, FIELDS LANDING CHANNEL & MILE 5.0 TO "N" STREET = 26 FEET

1:00 INDICATES THE NUMBER AND BEGINNING OF A LINE OF SOUNDINGS.
 SOUNDINGS ARE BASED ON TIDE GAUGES REFERENCED TO U.S.C. & G.S.
 Vertical and Horizontal Control:
 NOAA Station: 941 8767 - North Spit, CA
 Benchmark:
 NO 11 1940 (PID: LV0359)
 MLLW Elev: 4.251m
 Tides:
 RTK GPS, using GEOID12a and VDATUM
 RTK elevations calibrated at 10.0ft nail at Coast Guard Station Humboldt Bay
 Position:
 RTK Positions

CALIFORNIA
 HUMBOLDT COUNTY
**HUMBOLDT BAY
 BAR & ENTRANCE CHANNEL**
 CONDITION SURVEY
 5-8 MARCH 2025

Sheet Reference Number 1 of 2



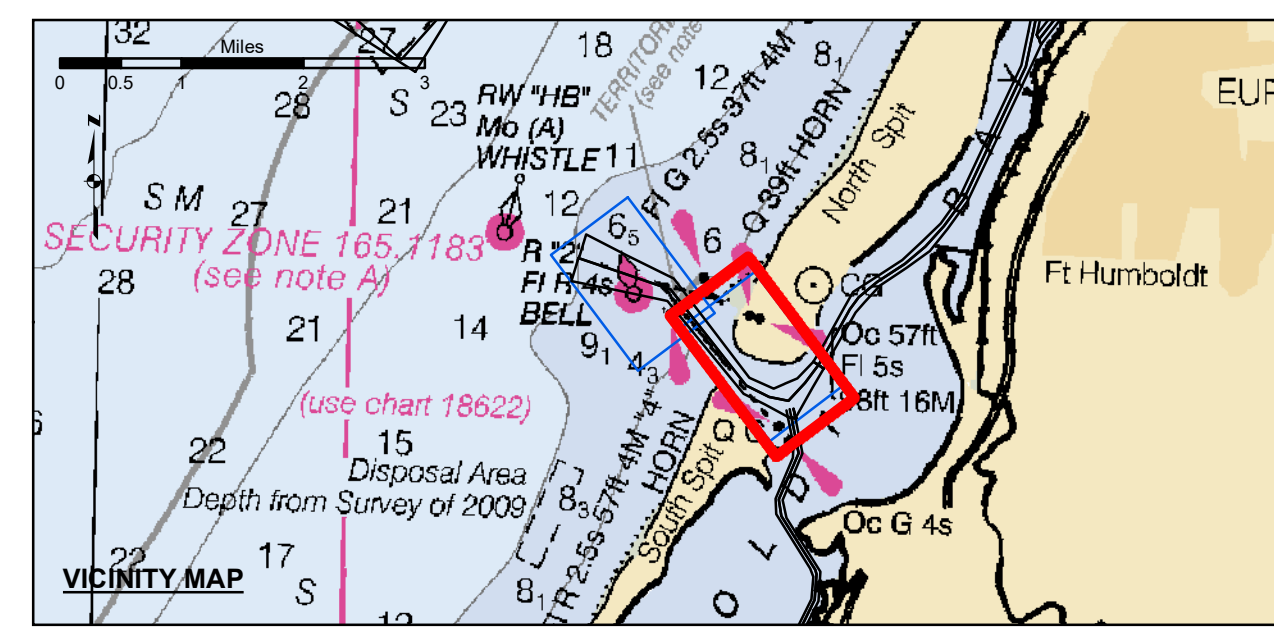
US Army Corps of Engineers
 San Francisco District
 450 Golden Gate Avenue
 San Francisco, CA 94102

DISCLAIMER
 The United States Government furnishes this information for the purpose of providing accurate and reliable data for the use of the user. The user is responsible for the results of any application of the data for other than its intended purpose. The user is responsible for the results of any application of the data for other than its intended purpose. The user is responsible for the results of any application of the data for other than its intended purpose.

Chart Date:	Mar 13, 2025
Designed by:	PDT
Plotted by:	PDT
Checked by:	PDT
Drawn by:	PDT

CALIFORNIA
 HUMBOLDT COUNTY
**HUMBOLDT BAY
 BAR & ENTRANCE CHANNEL**
 CONDITION SURVEY
 5-8 MARCH 2025

PRELIMINARY ISSUE
 THIS PLAN ISSUED FOR
 ADVANCE INFORMATION ONLY
 NOT FOR NAVIGATION PURPOSES



Federal Navigation Channel	Beacon, General	Contours
Shoaling Area	Obstruction Point	-48
Placement Area	Navigation Buoy	-47
Anchorage Area	Navigation Buoy	-46
Wreck Area	Shoalest Sounding*	-45
Submerged Wreck		-44
Zone_I_Angle_Points		

NOTES:
 DRAWINGS NOT TO BE USED AS NAVIGATION. ONLY CHANNEL CONDITION AT DATE OF SURVEY. THE LOCATION OF ALL NAVIGATION AIDS ARE BASED ON INFORMATION PROVIDED BY THE U.S. COAST GUARD. BUOY LOCATION REPRESENT THE POSITION OF THE SINKER ONLY.
 SURVEYED BY THE CORPS OF ENGINEERS.
 SOUNDING FOR THE CHANNEL MEASURED WITH MULTIBEAM ECHOSOUNDER AND ARE SHOWN TO THE NEAREST TENTH FOOT.
 SOUNDINGS ARE BASED ON THE DATUM OF MEAN LOWER LOW WATER AT THE LOCALITY.
 PLANE GRID AND COORDINATES ARE BASED ON THE STATE OF CALIFORNIA COORDINATE SYSTEM, LAMBERT CONFORMAL PROJECTION, ZONE 1 NAD 83, CALIFORNIA, AS DESCRIBED IN SPECIAL PUBLICATION NO. 235, PUBLISHED BY THE NATIONAL OCEAN SURVEY.
 PROJECT DEPTHS ARE AS FOLLOWS:
 BAR & ENTRANCE CHANNEL = 48 FEET
 NORTH BAY, SAMOA TO MILE 5.0 & = 38 FEET
 EUREKA CHANNEL, FIELDS LANDING CHANNEL & MILE 5.0 TO "N" STREET = 26 FEET

1:00 INDICATES THE NUMBER AND BEGINNING OF A LINE OF SOUNDINGS.
 SOUNDINGS ARE BASED ON TIDE GAUGES REFERENCED TO U.S.C. & G.S.
 Vertical and Horizontal Control:
 NOAA Station: 941 8767 - North Spit, CA
 Benchmark:
 NO 11 1940 (PID: LV0359)
 MLLW Elev: 4.251m
 Tides:
 RTK GPS, using GEOID12a and VDATUM
 RTK elevations calibrated at 10.0ft nail at Coast Guard Station Humboldt Bay
 Position:
 RTK Positions

Sheet Reference Number
 2 of 2