

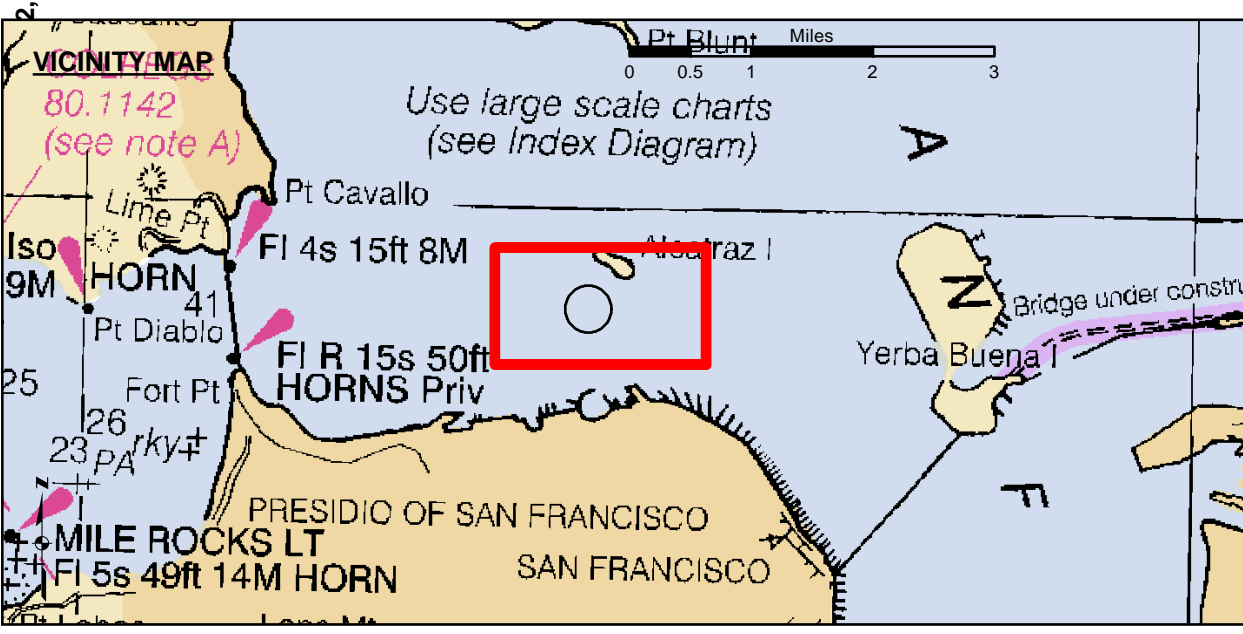
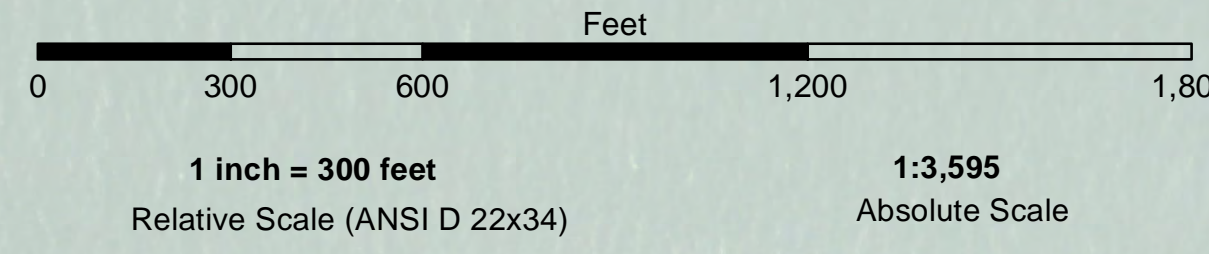
**PRELIMINARY ISSUE**  
THIS PLAN ISSUED FOR  
ADVANCE INFORMATION ONLY

LAMBERT COORDINATES		
POINT	X	Y
U.S.G.S. MON: 57 ELEV: - 14.00	6,005,367	2,123,290
TRANSAMERICA BUILDING	6,011,912	2,117,586
ALCATRAZ DISPOSAL SITE - (SF-11)		
1,000 FT. RADIUS	6,005,935	2,127,235
ALCATRAZ LIGHT	6,008,552	2,129,010
ALCATRAZ BUDY	6,008,367	2,127,186

**US Army Corps of Engineers**  
San Francisco District  
450 Golden Gate Ave.  
San Francisco, CA 94102

**DISCLAIMER**  
The United States Government furnishes this information as a public service. It is not intended to be used for any purpose other than that for which it was prepared. The user is responsible for the accuracy and completeness of the information and for the results of any use of the information. The United States Government makes no warranty, expressed or implied concerning the accuracy, completeness, or reliability of the information. The user is responsible for the results of any use of the information. The United States Government makes no warranty, expressed or implied concerning the accuracy, completeness, or reliability of the information. The user is responsible for the results of any use of the information.

Chart Date:	Apr 27, 2023	Designed by:	PDT	Drawn by:	PDT
Surveyed by:	KEVIN P. ARNETT	Plotted by:	PDT	Checked by:	PDT
Submitted:	Hydro Survey Team Leader	Recommended:	Chief, Hydro Survey Section	Approved:	Chief, Construction Branch



- Federal Navigation Channel
- Shoaling Area
- Placement Area
- Anchorage Area
- Wreck Area
- Submerged Wreck
- Zone III Angle Points
- Beacon, General
- Obstruction Point
- Navigation Buoy
- Navigation Buoy
- Shoalest Sounding\*
- Contour Lines Every 10' -20' to -120'

**NOTES:**  
HORIZONTAL COORDINATE SYSTEM: NORTH AMERICAN DATUM OF 1983 (NAD83). PROJECTED TO THE STATE PLANE COORDINATE SYSTEM (SPCS), CALIFORNIA ZONE III. DISTANCE UNITS IN U.S. FEET FEET.  
VERTICAL DATUM: SOUNDINGS ARE SHOWN IN FEET AND INDICATE DEPTHS BELOW MEAN LOWER LOW WATER. THE PROJECT DEPTH IS -40 FEET AT MLLW.  
THE INFORMATION DEPICTED ON THIS MAP REPRESENTS THE RESULTS OF A SURVEY CONDUCTED ON THE DATE INDICATED AND CAN ONLY BE CONSIDERED TO REPRESENT THE GENERAL CONDITION EXISTING AT THAT TIME.  
BASE MAPS ARE USDA NAIP 2010.  
\*SHOALEST SOUNDING PER QUARTER PER REACH

DRAWING NOT TO BE USED FOR NAVIGATION. ONLY CHANNEL CONDITION AT DATE OF SURVEY. THE LOCATION OF ALL NAVIGATION AIDS ARE BASED ON INFORMATION PROVIDED BY THE U.S. COAST GUARD. BUOY LOCATIONS REPRESENT THE POSITION OF THE SINKER ONLY. SOUNDINGS WERE TAKEN BY FATHOMETER AND ARE SHOWN TO THE NEAREST TENTH OF A FOOT. SOUNDINGS ARE BASED ON THE DATUM OF MEAN LOWER LOW WATER AT THE LOCALITY.

SURVEYED BY THE CORPS OF ENGINEERS.

PLANE GRID AND COORDINATES ARE BASED ON LAMBERT PROJECTION, NAD 83, ZONE III CALIFORNIA AS DESCRIBED IN SPECIAL PUBLICATION NO. 235, PUBLISHED BY THE NATIONAL OCEAN SURVEY.

HORIZONTAL GPS CONTROL: COAST GUARD D-BEACON  
VERTICAL CONTROL: BENCHMARK: 180 1936  
PID: HT0702  
MLLW = 3.972m(13.03ft)  
NOAA STATION 9414289  
TIDE GAUGE LOCATION: SAN FRANCISCO

CALIFORNIA  
SAN FRANCISCO BAY  
ALCATRAZ DISPOSAL SITE-SF11  
CONDITION SURVEY  
25 APRIL 2023  
Sheet Reference Number 1 of 1