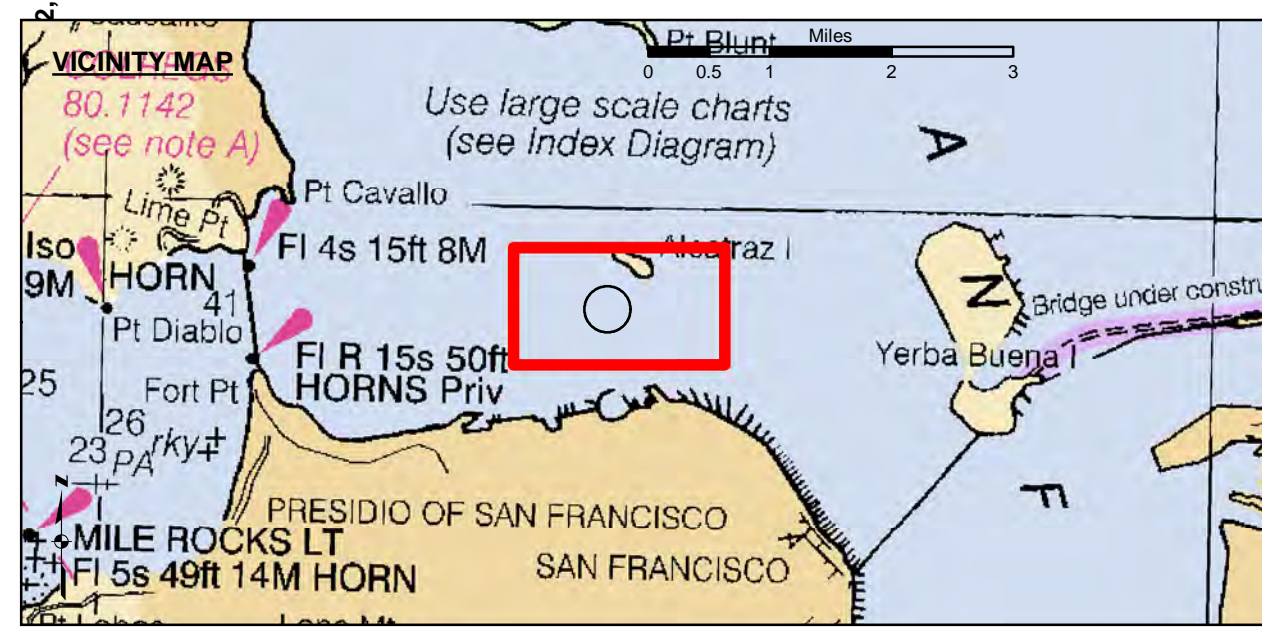


PRELIMINARY ISSUE
THIS PLAN ISSUED FOR
ADVANCE INFORMATION ONLY

LAMBERT COORDINATES		
POINT	X	Y
U.S.G.S. MON: 57 ELEV. - 14.00	6,005,367	2,123,290
TRANSAMERICA BUILDING	6,011,912	2,117,586
ALCATRAZ DISPOSAL SITE - (SF-11)	6,005,935	2,127,235
ALCATRAZ LIGHT	6,008,552	2,129,010
ALCATRAZ BUDY	6,008,367	2,127,186



- Federal Navigation Channel
- Shoaling Area
- Placement Area
- Anchorage Area
- Wreck Area
- Submerged Wreck
- Zone III Angle Points
- Beacon, General
- Obstruction Point
- Navigation Buoy
- Navigation Buoy
- Shoalest Sounding*
- Contour Lines
- Every 10'
- 20' to -120'

NOTES:
HORIZONTAL COORDINATE SYSTEM:
NORTH AMERICAN DATUM OF 1983 (NAD83), PROJECTED TO THE STATE PLANE COORDINATE SYSTEM (SPCS), CALIFORNIA ZONE III. DISTANCE UNITS IN U.S. SURVEY FEET.
VERTICAL DATUM:
SOUNDINGS ARE SHOWN IN FEET AND INDICATE DEPTHS BELOW MEAN LOWER LOW WATER.
THE INFORMATION DEPICTED ON THIS MAP REPRESENTS THE RESULTS OF A SURVEY CONDUCTED ON THE DATE INDICATED AND CAN ONLY BE CONSIDERED TO REPRESENT THE GENERAL CONDITION EXISTING AT THAT TIME.
BATHYMETRIC MAPS ARE USDA NAIP 2010.
*SHOALEST SOUNDING PER QUARTER PER REACH
DRAWING NOT TO BE USED FOR NAVIGATION. ONLY CHANNEL CONDITION AT DATE OF SURVEY. THE LOCATION AND AREAS ARE BASED ON INFORMATION PROVIDED BY THE U.S. COAST GUARD. BUOY LOCATIONS REPRESENT THE POSITION OF THE SINKER ONLY.

SOUNDING FOR THE CHANNEL MEASURED WITH MULTIBEAM ECHOSOUNDER AND ARE SHOWN TO THE NEAREST TENTH FOOT.
SOUNDINGS ARE BASED ON THE DATUM OF MEAN LOWER LOW WATER AT THE LOCALITY.
SURVEYED BY THE CORPS OF ENGINEERS.
THE PROJECT DEPTH IS -40 FEET AT MLLW.
PLANE GRID AND COORDINATES ARE BASED ON LAMBERT PROJECTION, NAD 83, ZONE III CALIFORNIA AS DESCRIBED IN SPECIAL CONDITION EXISTING AT THAT TIME.
HORIZONTAL GPS CONTROL:
COAST GUARD D-BEACON
VERTICAL CONTROL:
BENCHMARK: 180 1936
PID: HT0702
MLLW = 3.972m(13.03ft)
NOAA STATION 9414290
TIDE GAUGE LOCATION: SAN FRANCISCO

US Army Corps of Engineers
San Francisco District
450 Golden Gate Ave.
San Francisco, CA 94102

DISCLAIMER: The United States Government furnishes this information as a service to the public. It is not intended to be used for any purpose other than that for which it was prepared. The user assumes all liability for any use of this information. The user is responsible for the accuracy of any data derived from this information. The user is responsible for the accuracy of any data derived from this information. The user is responsible for the accuracy of any data derived from this information.

Prepared Under the Direction of	Chart Date:	PDT
LT COLONEL W. SHEBESTA	Jun 28, 2023	
Flatted By:	Designed by:	
PDT	PDT	
Checked By:	Drawn by:	
PDT	PDT	

CALIFORNIA
SAN FRANCISCO BAY
ALCATRAZ DISPOSAL SITE-SF-11
CONDITION SURVEY
27 JUNE 2023

Sheet Reference Number 1 of 1