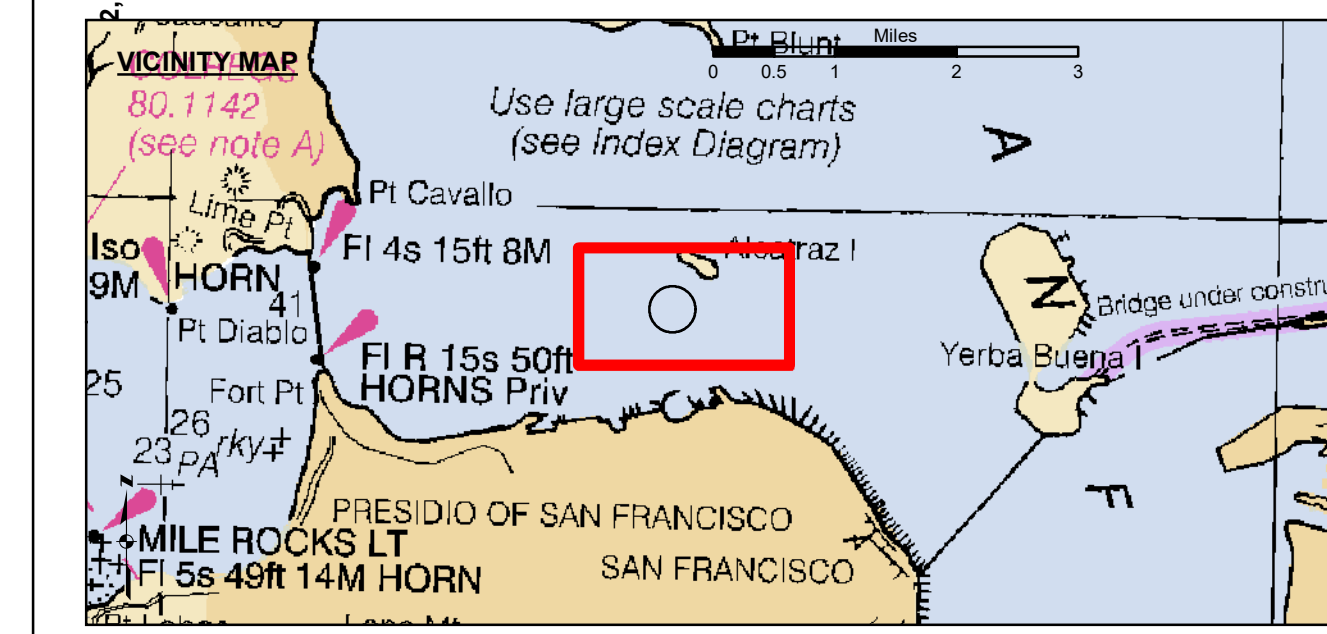
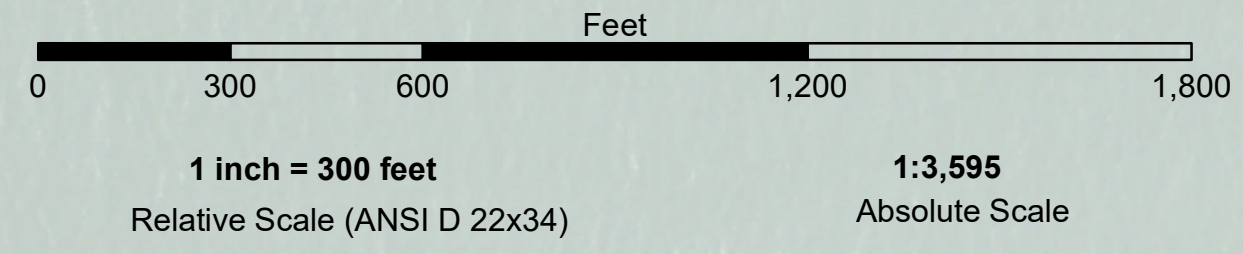


LAMBERT COORDINATES					
POINT	U.S.G.S.	MON.	ELEV. - 14.00	X	Y
				6,005,367	2,123,290
TRANSAMERICA BUILDING				6,011,912	2,117,586
ALCATRAZ DISPOSAL SITE - (SF-11)					
1,000 FT. RADIUS	6,005,935			2,127,235	
ALCATRAZ LIGHT	6,006,552			2,129,010	
ALCATRAZ BUOY	6,006,367			2,127,186	



- Federal Navigation Channel
- Shoaling Area
- Placement Area
- Anchorage Area
- Wreck Area
- Submerged Wreck
- Zone_III_Angle_Points
- Beacon, General
- Obstruction Point
- Navigation Buoy
- Navigation Buoy
- Shoalest Sounding*
- Contour Lines
- Every 10' -20' to -120'

NOTES:
HORIZONTAL COORDINATE SYSTEM:
NORTH AMERICAN DATUM OF 1983 (NAD83). PROJECTED TO THE STATE PLANE COORDINATE SYSTEM (SPCS), CALIFORNIA ZONE III. DISTANCE UNITS IN U.S. SURVEY FEET.

VERTICAL DATUM:
SOUNDINGS ARE SHOWN IN FEET AND INDICATE DEPTHS BELOW MEAN LOWER LOW WATER. SOUNDINGS ARE BASED ON THE DATUM OF MEAN LOWER LOW WATER AT THE LOCALITY.

THE INFORMATION DEPICTED ON THIS MAP REPRESENTS THE RESULTS OF A SURVEY CONDUCTED ON THE DATE INDICATED AND CAN ONLY BE CONSIDERED TO REPRESENT THE GENERAL CONDITION EXISTING AT THAT TIME.

BASE MAPS ARE USDA NAIP 2010.

*SHOALEST SOUNDING PER QUARTER PER REACH

DRAWING NOT TO BE USED FOR NAVIGATION. ONLY CHANNEL CONDITION AT DATE OF SURVEY. THE LOCATION OF ALL NAVIGATION AIDS ARE BASED ON INFORMATION PROVIDED BY THE U.S. COAST GUARD. BUOY LOCATIONS REPRESENT THE POSITION OF THE SINKER ONLY.

SOUNDING FOR THE CHANNEL MEASURED WITH MULTIBEAM ECHOSOUNDER AND IS SHOWN TO THE NEAREST TENTH FOOT. SOUNDINGS ARE BASED ON THE DATUM OF MEAN LOWER LOW WATER AT THE LOCALITY.

SURVEYED BY THE CORPS OF ENGINEERS.

THE PROJECT DEPTH IS -40 FEET AT MLLW.

PLANE GRID AND COORDINATES ARE BASED ON LAMBERT PROJECTION, NAD 83, ZONE III CALIFORNIA AS DESCRIBED IN SPECIAL PUBLICATION NO. 235, PUBLISHED BY THE NATIONAL OCEAN SURVEY.

HORIZONTAL GPS CONTROL:
COAST GUARD D-BEACON

VERTICAL CONTROL:
BENCHMARK: 180 1936
PID: HT0702
MLLW = 3.972m(13.03ft)

NOAA STATION 9414290
TIDE GAUGE LOCATION: SAN FRANCISCO

US Army Corps of Engineers
San Francisco District
450 Golden Gate Avenue
San Francisco, CA 94102

DISCLAIMER
The United States Government furnishes this information as it is received. The United States Government makes no warranty, expressed or implied, concerning the accuracy, completeness, or reliability of the information. The user is responsible for the results of any application of the data for other than its intended purpose. The user is responsible for the results of any application of the data for other than its intended purpose. These data belong to the Government. Therefore, the user is not to disseminate these data to other than the user without also transferring this disclaimer.

PREPARED UNDER THE DIRECTION OF
TIMOTHY W. SHEBESTA
LT COLONEL, C.E., DISTRICT ENGINEER

Submittal: Hydro Survey Team Leader
Recommended: Chief, Hydro Survey Section
Approved: Chief, Construction Branch

Surveyed By: _____
Plotted By: PDT
Checked By: PDT
Drawn By: PDT

Chart Date: Apr 16, 2024
Designed by: _____
Drawn by: _____

CALIFORNIA
ALCATRAZ DISPOSAL SITE-SF11
CONDITION SURVEY
12 APRIL 2024

Sheet Reference Number 1 of 1