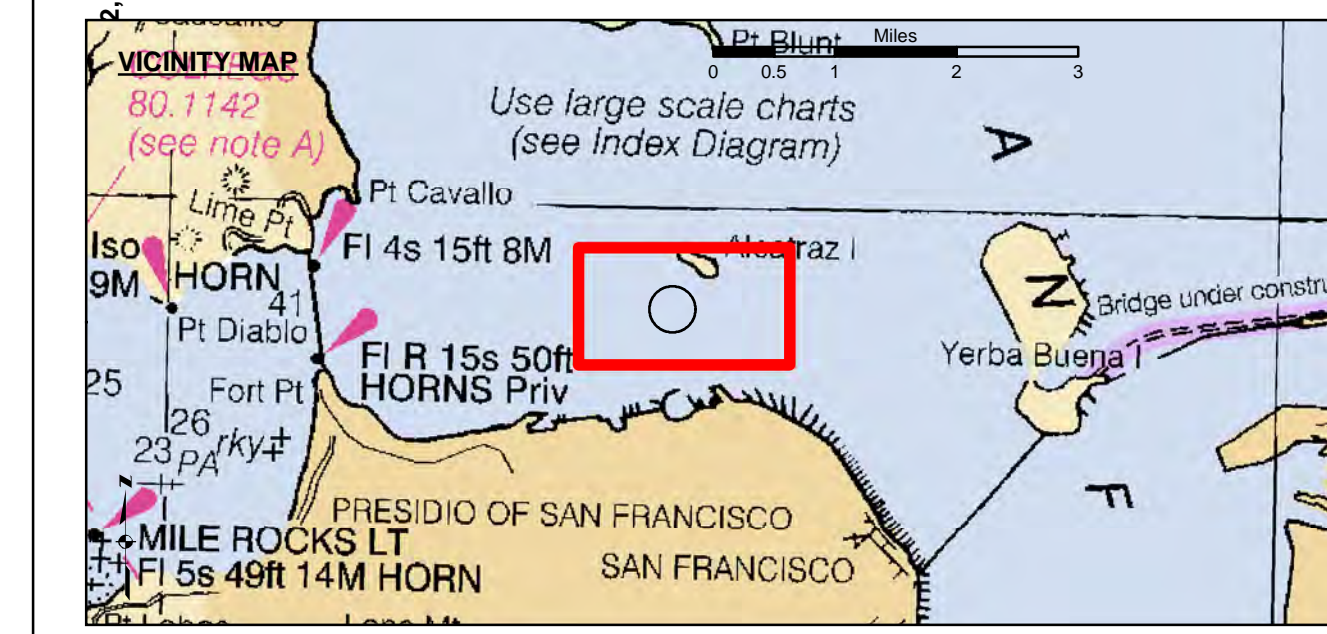
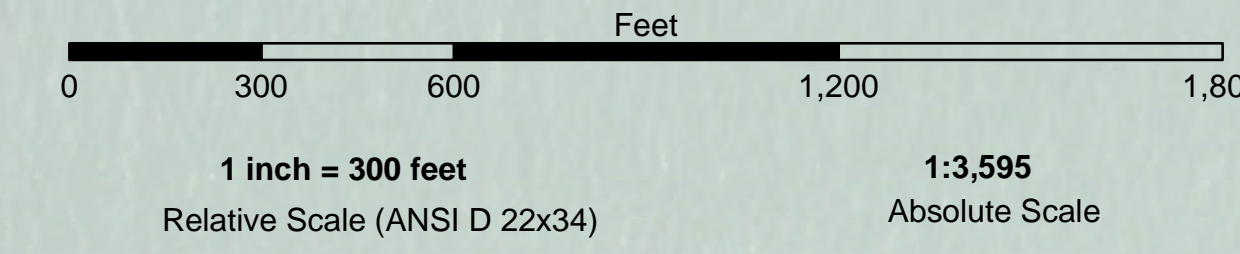


LAMBERT COORDINATES

POINT	X	Y
U.S.G.S. MON: 57 ELEV: - 14.00	6,005,367	2,123,290
TRANSAMERICA BUILDING	6,011,912	2,117,586
ALCATRAZ DISPOSAL SITE - (SF-11)		
1,000 FT. RADIUS	6,005,935	2,127,235
ALCATRAZ LIGHT	6,008,552	2,129,010
ALCATRAZ BUDY	6,008,367	2,127,186



- Federal Navigation Channel
- Shoaling Area
- Placement Area
- Anchorage Area
- Wreck Area
- Submerged Wreck
- Zone III Angle Points
- Beacon, General
- Obstruction Point
- Navigation Buoy
- Navigation Buoy
- Shoalest Sounding*
- Contour Lines
- Every 10'
- 20' to -120'

NOTES:
 HORIZONTAL COORDINATE SYSTEM:
 NORTH AMERICAN DATUM OF 1983 (NAD83). PROJECTED TO THE STATE PLANE COORDINATE SYSTEM (SPCS), CALIFORNIA ZONE III. DISTANCE UNITS IN U.S. SURVEY FEET.
 VERTICAL DATUM:
 SOUNDINGS ARE SHOWN IN FEET AND INDICATE DEPTHS BELOW MEAN LOWER LOW WATER.
 SOUNDINGS ARE BASED ON THE DATUM OF MEAN LOWER LOW WATER AT THE LOCALITY.
 THE INFORMATION DEPICTED ON THIS MAP REPRESENTS THE RESULTS OF A SURVEY CONDUCTED ON THE DATE INDICATED AND CAN ONLY BE CONSIDERED TO REPRESENT THE GENERAL CONDITION EXISTING AT THAT TIME.
 BASE MAPS ARE USDA NAIP 2010.

DRAWING NOT TO BE USED FOR NAVIGATION. ONLY CHANNEL CONDITION AT DATE OF SURVEY. THE LOCATION OF ALL NAVIGATION AIDS ARE BASED ON INFORMATION PROVIDED BY THE U.S. COAST GUARD. BUOY LOCATIONS REPRESENT THE POSITION OF THE SINKER ONLY.
 SOUNDING FOR THE CHANNEL MEASURED WITH MULTIBEAM ECHOSOUNDER AND ARE SHOWN TO THE NEAREST TENTH FOOT.
 SOUNDINGS ARE BASED ON THE DATUM OF MEAN LOWER LOW WATER AT THE LOCALITY.
 SURVEYED BY THE CORPS OF ENGINEERS.
 THE PROJECT DEPTH IS -40 FEET AT MLLW.
 PLANE GRID AND COORDINATES ARE BASED ON LAMBERT PROJECTION, NAD 83, ZONE III CALIFORNIA AS DESCRIBED IN SPECIAL PUBLICATION NO. 235, PUBLISHED BY THE NATIONAL OCEAN SURVEY.
 HORIZONTAL GPS CONTROL:
 COAST GUARD D-BEACON
 VERTICAL CONTROL:
 BENCHMARK: 180 1936
 PID: HT0702
 MLLW = 3.972m(13.03ft)
 NOAA STATION 9414290
 TIDE GAUGE LOCATION: SAN FRANCISCO

US Army Corps of Engineers
 San Francisco District
 450 Golden Gate Avenue
 San Francisco, CA 94102

DISCLAIMER: The United States Government furnishes this information as it exists without warranty. The United States Government makes no warranty, expressed or implied concerning the accuracy, completeness, or timeliness of the information. The user of this information is responsible for the results of any use of the information. The user of this information is responsible for the results of any use of the information. The user of this information is responsible for the results of any use of the information.

Chart Date: May 15, 2024
 Surveyed By: TIMOTHY W. SHEBESTA
 Plotted By: LT COLONEL C.E. DISTRICT ENGINEER
 Checked By: PDD
 Drawn By: PDD
 Title: ALCATRAZ DISPOSAL SITE-SF11
 Date: 13 MAY 2024
 Sheet Reference Number 1 of 1