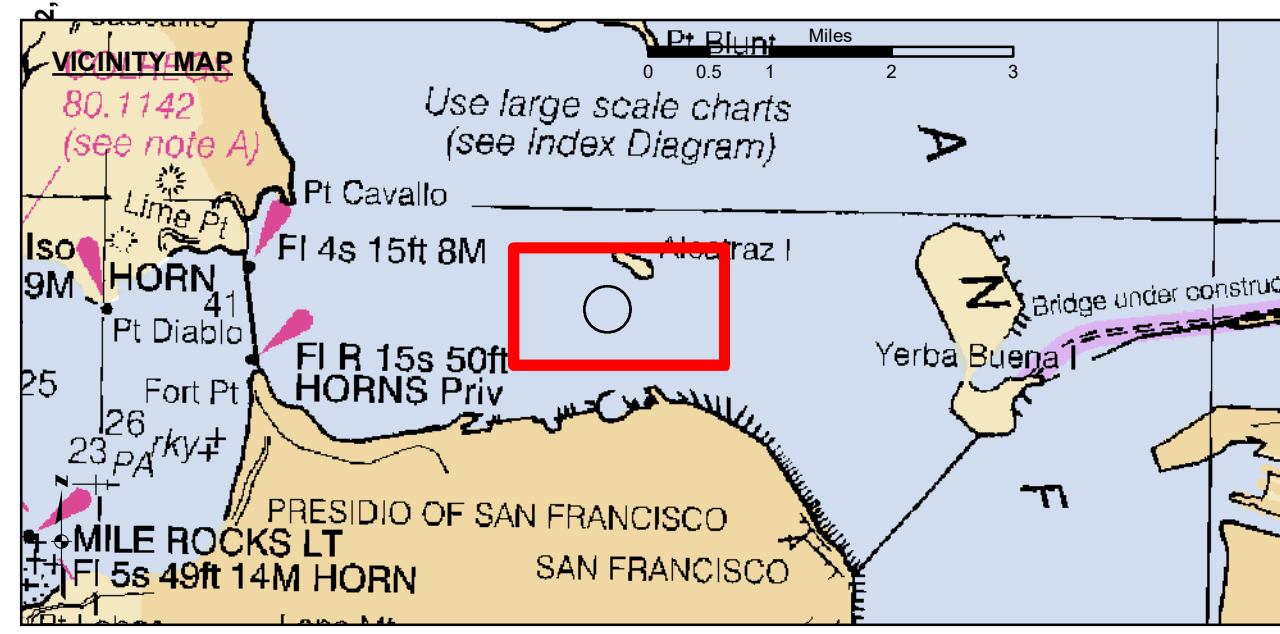
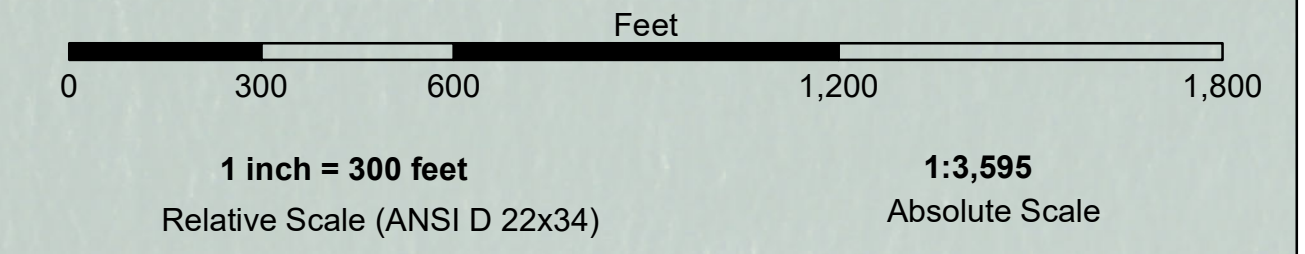


**LAMBERT COORDINATES**

POINT	X	Y
U.S.G.S. MON, 57	6,005,367	2,123,290
TRANSAMERICA BUILDING	6,011,912	2,117,586
ALCATRAZ DISPOSAL SITE - (SF-11)		
1,000 FT. RADIUS	6,005,935	2,127,235
ALCATRAZ LIGHT	6,006,552	2,129,010
ALCATRAZ BUOY	6,006,367	2,127,186



- Federal Navigation Channel
- Shoaling Area
- Placement Area
- Anchorage Area
- Wreck Area
- Submerged Wreck
- Beacon, General
- Obstruction Point
- Navigation Buoy
- Shoalest Sounding\*
- Contour Lines
- Every 10'
- 20' to -120'

**NOTES:**  
 HORIZONTAL COORDINATE SYSTEM:  
 NORTH AMERICAN DATUM OF 1983 (NAD83). PROJECTED TO THE STATE PLANE COORDINATE SYSTEM (SPCS), CALIFORNIA ZONE III. DISTANCE UNITS IN U.S. SURVEY FEET.

VERTICAL DATUM:  
 SOUNDINGS ARE SHOWN IN FEET AND INDICATE DEPTHS BELOW MEAN LOWER LOW WATER. SOUNDINGS ARE BASED ON THE DATUM OF MEAN LOWER LOW WATER AT THE LOCALITY.

THE INFORMATION DEPICTED ON THIS MAP REPRESENTS THE RESULTS OF A SURVEY CONDUCTED ON THE DATE INDICATED AND CAN ONLY BE CONSIDERED TO REPRESENT THE GENERAL CONDITION EXISTING AT THAT TIME.

BASE MAPS ARE USDA NAIP 2010.

\*SHOALEST SOUNDING PER QUARTER PER REACH

DRAWING NOT TO BE USED FOR NAVIGATION. ONLY CHANNEL CONDITION AT DATE OF SURVEY. THE LOCATION OF ALL NAVIGATION AIDS ARE BASED ON INFORMATION PROVIDED BY THE U.S. COAST GUARD. BUOY LOCATIONS REPRESENT THE POSITION OF THE SINKER ONLY.

SOUNDING FOR THE CHANNEL MEASURED WITH MULTIBEAM ECHOSOUNDER AND ARE SHOWN TO THE NEAREST TENTH FOOT. SOUNDINGS ARE BASED ON THE DATUM OF MEAN LOWER LOW WATER AT THE LOCALITY.

SURVEYED BY THE CORPS OF ENGINEERS.

THE PROJECT DEPTH IS -40 FEET AT MLLW.

PLANE GRID AND COORDINATES ARE BASED ON LAMBERT PROJECTION, NAD 83, ZONE III CALIFORNIA AS DESCRIBED IN SPECIAL PUBLICATION NO. 235, PUBLISHED BY THE NATIONAL OCEAN SURVEY.

HORIZONTAL GPS CONTROL:  
 COAST GUARD D-BEACON

VERTICAL CONTROL:  
 BENCHMARK: 180 1936  
 PID: HT0702  
 MLLW = 3.972m(13.03ft)

NOAA STATION 9414290  
 TIDE GAUGE LOCATION: SAN FRANCISCO



**DISCLAIMER:** The United States Government furnishes this information as it is received, without warranty or guarantee. The user is responsible for the accuracy of the information and for the application of the data for other than the intended purpose.

**Access Constraints:** The United States Government furnishes this information as it is received, without warranty or guarantee. The user is responsible for the accuracy of the information and for the application of the data for other than the intended purpose.

Chart Date:	Jun 24, 2024	Drawn by:	PDT
Surveyed By:	TIMOTHY W. SHEBESTA	Flatted by:	PDT
Submittal:	Hydro Survey Team Leader	Checked By:	PDT
Recommendation:	Chief, Hydro Survey Section	Approved:	Chief, Construction Branch

**CALIFORNIA**  
**ALCATRAZ DISPOSAL SITE-SF11**  
**CONDITION SURVEY**  
**11 JUNE 2024**

**Sheet Reference Number 1 of 1**