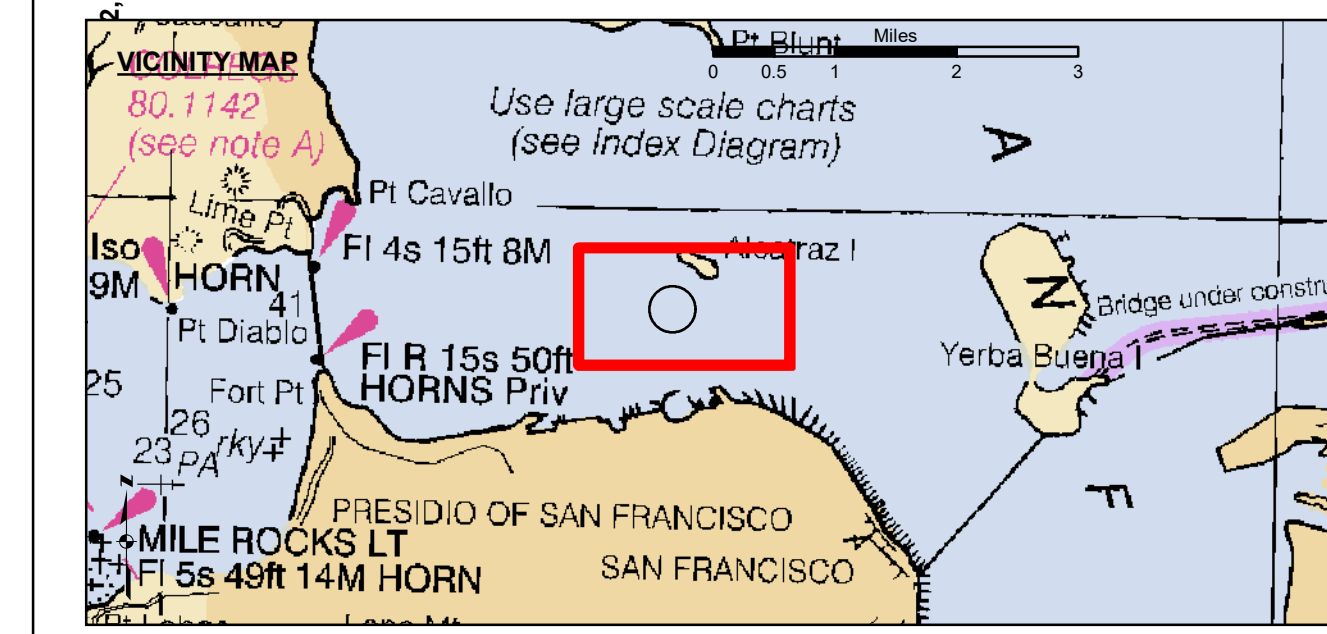
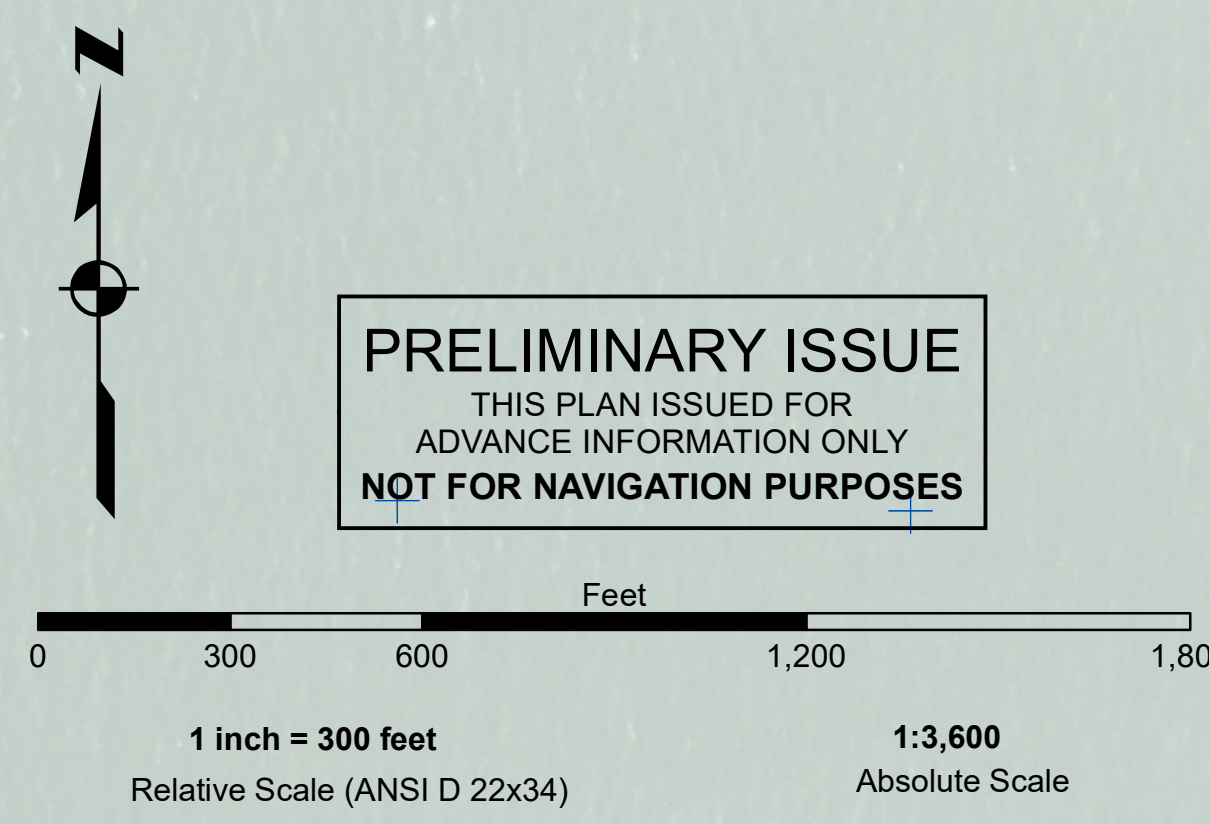




LAMBERT COORDINATES			
POINT	X	Y	
U.S.G.S. MON, 57 ELEV. - 14.00	6,005,367	2,123,290	
TRANSAMERICA BUILDING	6,011,912	2,117,586	
ALCATRAZ DISPOSAL SITE - (SF-11)			
1,000 FT. RADIUS	6,005,935	2,127,235	
ALCATRAZ LIGHT	6,006,552	2,129,010	
ALCATRAZ BUOY	6,006,367	2,127,186	



- Federal Navigation Channel
- Shoaling Area
- Placement Area
- Anchorage Area
- Wreck Area
- Submerged Wreck
- Zone_III_Angle_Points
- Beacon, General
- Obstruction Point
- Navigation Buoy
- Navigation Buoy
- Shoalest Sounding*
- Contour Lines
- Every 10' -20' to -120'

NOTES:
 HORIZONTAL COORDINATE SYSTEM:
 NORTH AMERICAN DATUM OF 1983 (NAD83). PROJECTED TO THE STATE PLANE COORDINATE SYSTEM (SPCS), CALIFORNIA ZONE III. DISTANCE UNITS IN U.S. SURVEY FEET.

VERTICAL DATUM:
 SOUNDINGS ARE SHOWN IN FEET AND INDICATE DEPTHS BELOW MEAN LOWER LOW WATER. SOUNDINGS ARE BASED ON THE DATUM OF MEAN LOWER LOW WATER AT THE LOCALITY.

THE INFORMATION DEPICTED ON THIS MAP REPRESENTS THE RESULTS OF A SURVEY CONDUCTED ON THE DATE INDICATED AND CAN ONLY BE CONSIDERED TO REPRESENT THE GENERAL CONDITION EXISTING AT THAT TIME.

BASE MAPS ARE USDA NAIP 2010.

*SHOALEST SOUNDING PER QUARTER PER REACH

DRAWING NOT TO BE USED FOR NAVIGATION. ONLY CHANNEL CONDITION AT DATE OF SURVEY. THE LOCATION OF ALL NAVIGATION AIDS ARE BASED ON INFORMATION PROVIDED BY THE U.S. COAST GUARD. BUOY LOCATIONS REPRESENT THE POSITION OF THE SINKER ONLY.

SOUNDING FOR THE CHANNEL MEASURED WITH MULTIBEAM ECHOSOUNDER AND ARE SHOWN TO THE NEAREST TENTH FOOT. SOUNDINGS ARE BASED ON THE DATUM OF MEAN LOWER LOW WATER AT THE LOCALITY.

SURVEYED BY THE CORPS OF ENGINEERS.

THE PROJECT DEPTH IS -40 FEET AT MLLW.

PLANE GRID AND COORDINATES ARE BASED ON LAMBERT PROJECTION, NAD 83, ZONE III CALIFORNIA AS DESCRIBED IN SPECIAL PUBLICATION NO. 235, PUBLISHED BY THE NATIONAL OCEAN SURVEY.

HORIZONTAL GPS CONTROL:
 COAST GUARD D-BEACON

VERTICAL CONTROL:
 BENCHMARK: 180 1936
 PID: HT0702
 MLLW = 3.972m(13.03ft)

NOAA STATION 9414290
 TIDE GAUGE LOCATION: SAN FRANCISCO

US Army Corps of Engineers
 San Francisco District
 450 Golden Gate Avenue
 San Francisco, CA 94102

DISCLAIMER
 The United States Government furnishes this information as it is received. It is not to be used for any purpose other than that for which it was prepared, and it is not to be construed as an endorsement, approval, or implied warranty of the accuracy, completeness, or reliability of the information. The user assumes all liability for any use of this information. The United States Government makes no representation or warranty of any kind, express or implied, regarding the accuracy, completeness, or reliability of the information. The user assumes all liability for any use of this information. The United States Government makes no representation or warranty of any kind, express or implied, regarding the accuracy, completeness, or reliability of the information.

Chart Date: Nov 19, 2024
 Designed by: PDT
 Flatted by: PDT
 Checked by: PDT
 Drawn by: PDT

PREPARED UNDER THE DIRECTION OF
 LT COLONEL W. SHEBESTA
 Subject: Hydro Survey Team Leader
 Recommend: Chief, Hydro Survey Section
 Approve: Chief, Construction Branch

CALIFORNIA
ALCATRAZ DISPOSAL SITE-SF11
 CONDITION SURVEY
 04-14 NOVEMBER 2024

Sheet Reference Number 1 of 1