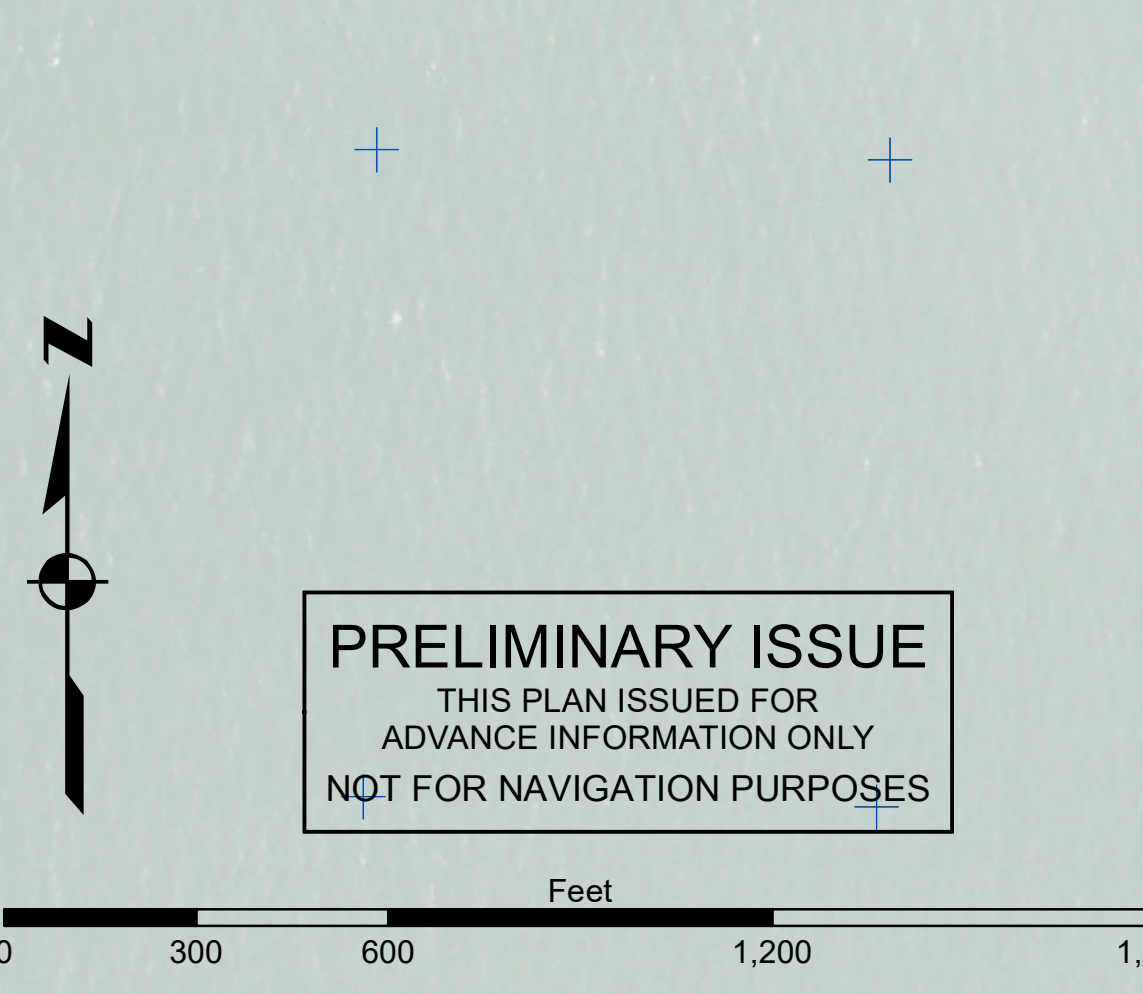


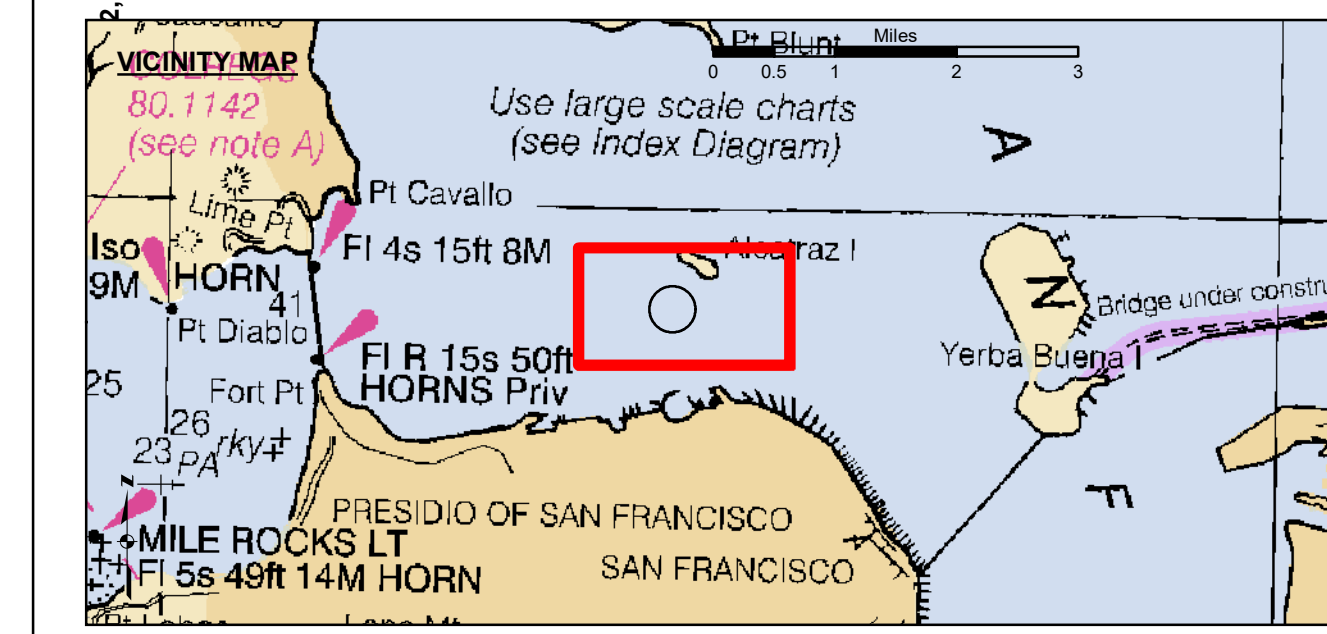


**LAMBERT COORDINATES**

POINT	X	Y
U.S.G.S. MON. 57	6,005,367	2,123,290
TRANSAMERICA BUILDING	6,011,912	2,117,586
ALCATRAZ DISPOSAL SITE - (SF-11)		
1,000 FT. RADIUS	6,005,935	2,127,235
ALCATRAZ LIGHT	6,006,552	2,129,010
ALCATRAZ BUOY	6,006,367	2,127,186



**PRELIMINARY ISSUE**  
 THIS PLAN ISSUED FOR  
 ADVANCE INFORMATION ONLY  
 NOT FOR NAVIGATION PURPOSES



- Federal Navigation Channel
- Shoaling Area
- Placement Area
- Anchorage Area
- Wreck Area
- Submerged Wreck
- Zone\_III\_Angle\_Points
- Beacon, General
- Obstruction Point
- Navigation Buoy
- Navigation Buoy
- Shoalest Sounding\*
- Contour Lines
- Every 10'  
-20' to -120'

**NOTES:**  
 HORIZONTAL COORDINATE SYSTEM:  
 NORTH AMERICAN DATUM OF 1983 (NAD83). PROJECTED TO THE STATE PLANE COORDINATE SYSTEM (SPCS), CALIFORNIA ZONE III. DISTANCE UNITS IN U.S. SURVEY FEET.

VERTICAL DATUM:  
 SOUNDINGS ARE SHOWN IN FEET AND INDICATE DEPTHS BELOW MEAN LOWER LOW WATER. SOUNDINGS ARE BASED ON THE DATUM OF MEAN LOWER LOW WATER AT THE LOCALITY.

THE INFORMATION DEPICTED ON THIS MAP REPRESENTS THE RESULTS OF A SURVEY CONDUCTED ON THE DATE INDICATED AND CAN ONLY BE CONSIDERED TO REPRESENT THE GENERAL CONDITION EXISTING AT THAT TIME.

BASE MAPS ARE USDA NAIP 2010.

\*SHOALEST SOUNDING PER QUARTER PER REACH

DRAWING NOT TO BE USED FOR NAVIGATION. ONLY CHANNEL CONDITION AT DATE OF SURVEY. THE LOCATION OF ALL NAVIGATION AIDS ARE BASED ON INFORMATION PROVIDED BY THE U.S. COAST GUARD. BUOY LOCATIONS REPRESENT THE POSITION OF THE SINKER ONLY.

SOUNDING FOR THE CHANNEL MEASURED WITH MULTIBEAM ECHOSOUNDER AND ARE SHOWN TO THE NEAREST TENTH FOOT. SOUNDINGS ARE BASED ON THE DATUM OF MEAN LOWER LOW WATER AT THE LOCALITY.

SURVEYED BY THE CORPS OF ENGINEERS.

THE PROJECT DEPTH IS -40 FEET AT MLLW.

PLANE GRID AND COORDINATES ARE BASED ON LAMBERT PROJECTION, NAD 83, ZONE III CALIFORNIA AS DESCRIBED IN SPECIAL PUBLICATION NO. 235, PUBLISHED BY THE NATIONAL OCEAN SURVEY.

HORIZONTAL GPS CONTROL:  
 COAST GUARD D-BEACON

VERTICAL CONTROL:  
 BENCHMARK: 180 1936  
 PID: HT0702  
 MLLW = 3.972m(13.03ft)

NOAA STATION 9414290  
 TIDE GAUGE LOCATION: SAN FRANCISCO

**US Army Corps of Engineers**  
 San Francisco District  
 450 Golden Gate Avenue  
 San Francisco, CA 94102

**DISCLAIMER:** The United States Government furnishes this information as it is received. The user assumes all responsibility for its use. The United States Government makes no warranty, expressed or implied, concerning the accuracy, completeness, or timeliness of the information. The user is responsible for the results of any application of the data for other than its intended purpose.

Chart Date: Mar 26, 2025  
 Surveyed By: LT COLONEL W. SHEBESTA  
 Flatted By: PDT  
 Recommended: Chief, Technical Services Section  
 Checked By: PDT  
 Approved: Chief, Geospatial Branch  
 Drawn By: PDT

**CALIFORNIA**  
 ALCATRAZ DISPOSAL SITE-SF11  
 CONDITION SURVEY  
 25 MARCH 2025

**Sheet Reference Number 1 of 1**