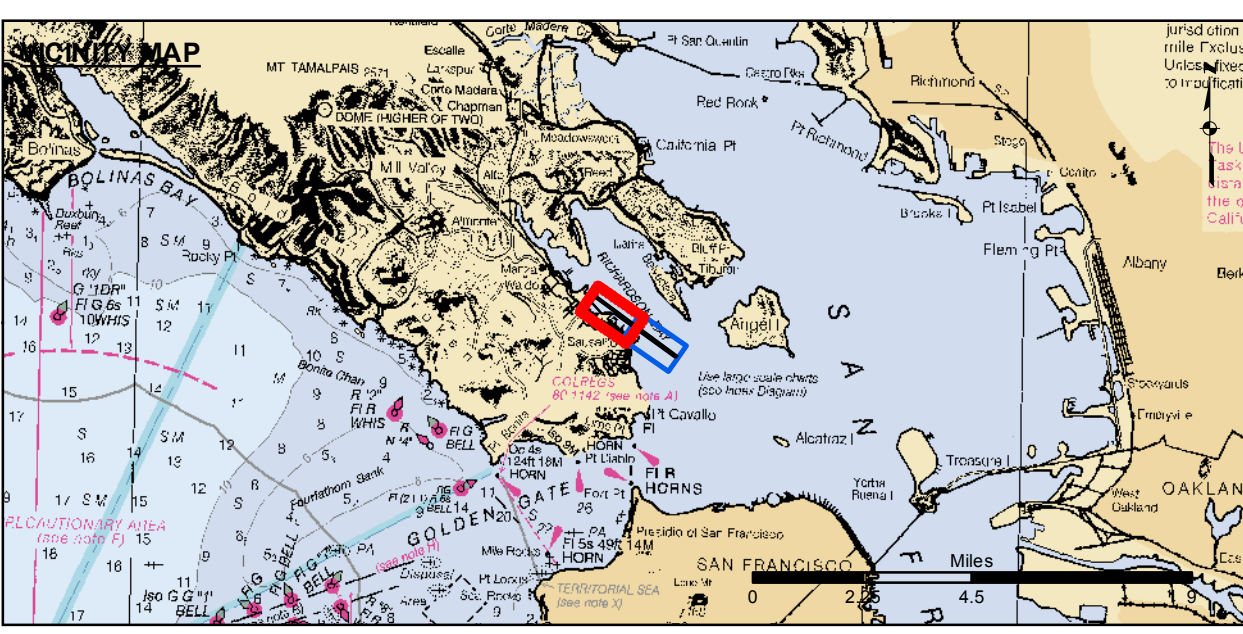
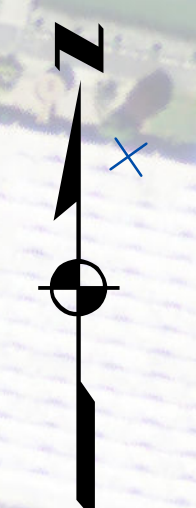


**PRELIMINARY ISSUE**  
THIS PLAN ISSUED FOR  
ADVANCE INFORMATION ONLY



	Federal Navigation Channel		Beacon, General	<b>Contours</b>
	Shoaling Areas		Obstruction Point	
	Placement Area		Navigation Buoy	
	Anchorage Area		Navigation Buoy	
	Wreck Area		Shoalest Sounding*	
	Submerged Wreck			
	Angle Point			

**NOTES:**  
DRAWING NOT TO BE USED FOR NAVIGATION, ONLY CHANNEL CONDITION AT DATE OF SURVEY.  
THE LOCATION OF ALL NAVIGATION AIDS ARE BASED ON INFORMATION PROVIDED BY THE U.S. COAST GUARD. BUOY LOCATIONS REPRESENT THE POSITION OF THE SINKER ONLY.  
SURVEYED BY THE CORPS OF ENGINEERS.  
INFORMATION DEPICTED ON THIS MAP REPRESENTS THE RESULTS OF SURVEYS MADE ON THE DATES INDICATED AND CAN ONLY BE CONSIDERED AS INDICATING THE GENERAL CONDITIONS AT THAT TIME.

SOUNDINGS ARE TAKEN BY FATHOMETER AND ARE SHOWN TO THE NEAREST FOOT AND TENTHS OF A FOOT.  
SOUNDINGS ARE BASED ON THE DATUM OF MEAN LOWER LOW WATER AT THE LOCALITY, NAVD 1988  
PLANE GRID AND COORDINATES ARE BASED ON THE STATE OF CALIFORNIA COORDINATE SYSTEM, LAMBERT CONFORMAL PROJECTION, ZONE III NAD 83, CALIFORNIA, AS DESCRIBED IN SPECIAL PUBLICATION NO. 235, PUBLISHED BY NATIONAL OCEAN SURVEY.  
THE PROJECT DEPTH IS 20 FEET AT M.L.L.W.  
SOUNDINGS ARE BASED ON THE TIDE GAUGE.

**US Army Corps of Engineers**  
San Francisco District  
1455 Market Street  
San Francisco, CA 94103

**DISCLAIMER:** The United States Government furnishes the information contained herein for the use of the recipient for the purposes stated. The recipient understands that the US Government makes no warranties, expressed or implied, concerning the accuracy, completeness, or reliability of the information. The user is responsible for the results of any application of the data for other than its intended purpose. The recipient may not transfer these data to others without also transferring this Disclaimer.

Prepared Under the Direction of	JOHN C. MORROW	Chart Date:	Sep 22, 2014
Submitted by	Hydro Survey Team Leader	Designed by:	PDT
Recommended by	Chief, Hydro Survey Station	Checked by:	PDT
Approved by	Chief, Construction Branch	Drawn by:	PDT

CALIFORNIA  
**MARINSHIP CHANNEL (RICHARDSON BAY) CONDITION SURVEY**  
21 September 2014

**Sheet Reference Number**  
1 of 2