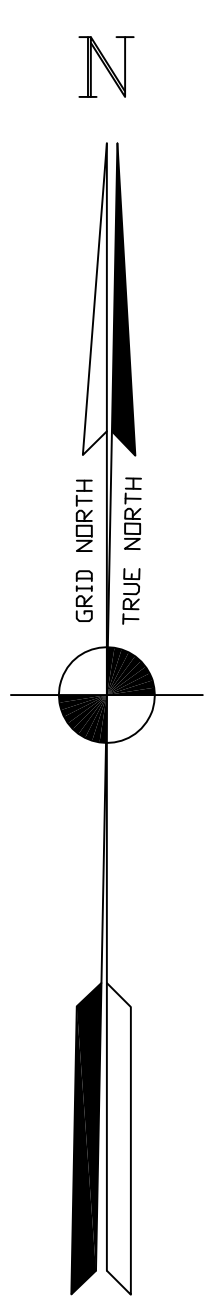


6,651,565
W 122° 16' 20"

N 38° 04' 00"



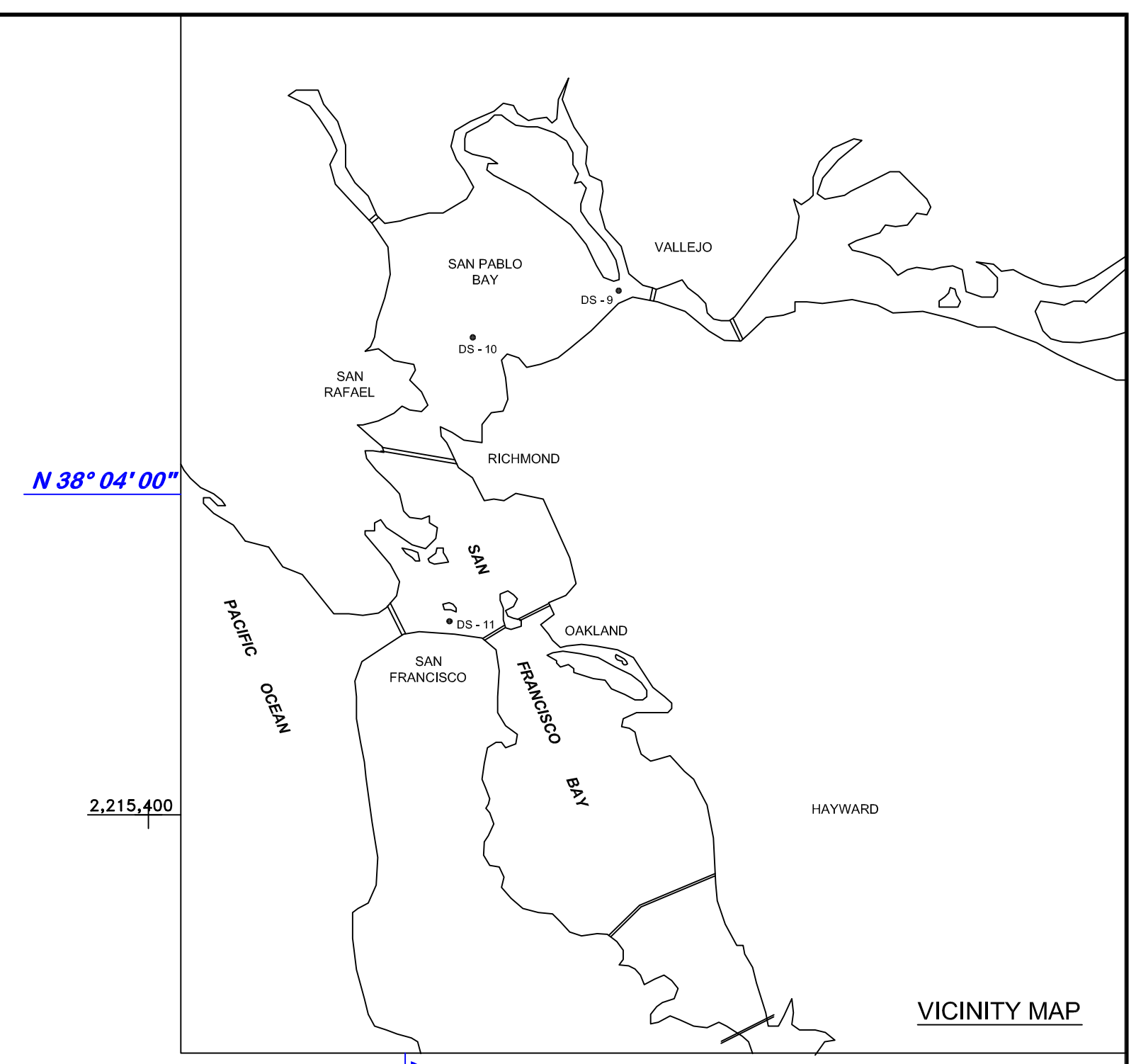
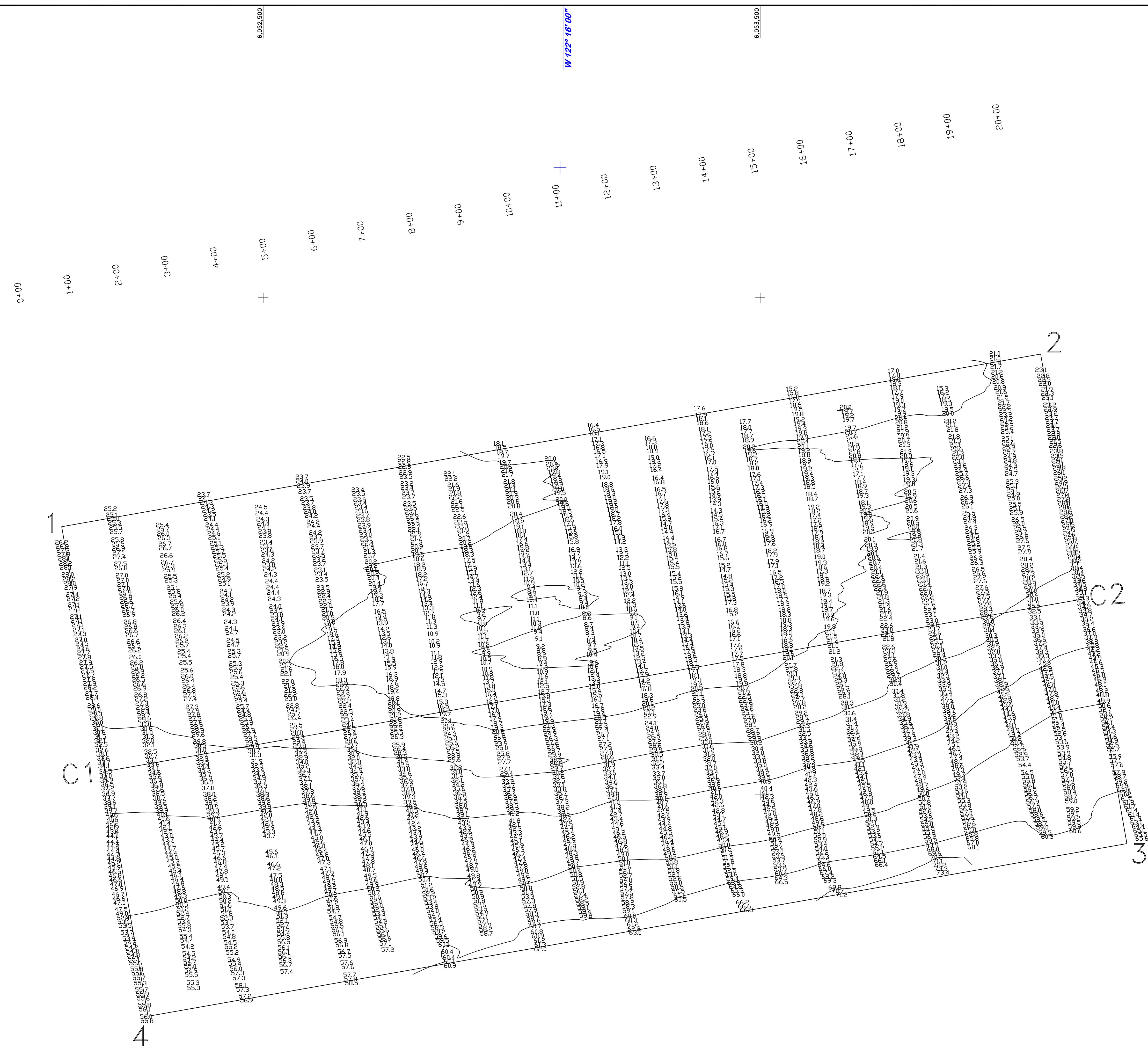
2,215,400

2,214,400

N 38° 03' 40"

2,213,400

6,651,560
W 122° 16' 20"



COORDINATES CHART

CHANNEL PT.	X	Y
1	6052094.6100	2214939.5300
2	6054064.3100	2215286.3300
3	6054237.9100	2214302.0300
4	6052268.3100	2213954.7300

CENTERLINE PT.	X	Y
C1	6052181.5100	2214447.1300
C2	6054151.1100	2214794.4300

PRELIMINARY ISSUE
THIS PLAN ISSUED FOR
ADVANCE INFORMATION ONLY

NOTES:

DRAWINGS NOT TO BE USED AS NAVIGATION CHART. ONLY CHANNEL CONDITION AT DATE OF SURVEY. THE LOCATION OF ALL NAVIGATION AIDS ARE BASED ON INFORMATION PROVIDED BY THE U.S. COAST GUARD BUOY LOCATIONS REPRESENT THE POSITION OF THE SINKER ONLY.

SURVEYED BY THE CORPS OF ENGINEERS, 03 FEBRUARY 2010.

SOUNDINGS ARE TAKEN BY FATHOMETER AND ARE SHOWN TO THE NEAREST FOOT AND TENTHS OF A FOOT.

SOUNDINGS ARE BASED ON THE DATUM OF MEAN LOWER LOW WATER AT THE LOCALITY, NAVD 88.

PLANE GRID, BEARING AND COORDINATES ARE BASED ON THE STATE OF CALIFORNIA COORDINATE SYSTEM LAMBERT CONFORMAL PROJECTION, ZONE III NAD 83, CALIFORNIA, AS DESCRIBED IN SPECIAL PUBLICATION NO. 253, PUBLISHED BY NATIONAL OCEAN SURVEY.

THE PROJECT DEPTH IS 50 FEET AT M.L.L.W.

SOUNDINGS ARE BASED ON THE TIDE GAUGE LOCATED AT MARE ISLAND COAST GUARD DOCK VERTICAL CONTROL U-466 1950 USC&GS DISK ELEV. 13.99 FT MLLW TIDAL 5218L USC&GS DISK ELEV. 11.04 FT MLLW HORIZONTAL CONTROL COAST GUARD D-BEACON

SYMBOL	DESCRIPTION	DATE	APPROVAL
REVISIONS			
US ARMY CORPS OF ENGINEERS SAN FRANCISCO DISTRICT			
DRAWN BY:	EWC	SOLANO-CONTRA COSTA COUNTY CALIFORNIA	
CHECKED BY:	TVW	CARQUINEZ STRAIT CONDITION SURVEY DISPOSAL SITE SF NO. 9 03 FEBRUARY 2010	
DESIGNED BY:			
SUBMITTED:	PC		
HYDRO SURVEY TEAM LEADER		APPROVED: DATE:	
CHIEF, TECHNICAL SUPPORT SECTION		CHIEF, CONSTRUCTION BRANCH	
PREPARED UNDER THE DIRECTION OF LAURENCE M. FARRELL LT. COLONEL, C.E., DISTRICT ENGINEER		SCALE: 1" = 100'	JOB NO.: DRAWING NUMBER:
		SHEET: 1 OF 1 51 2	