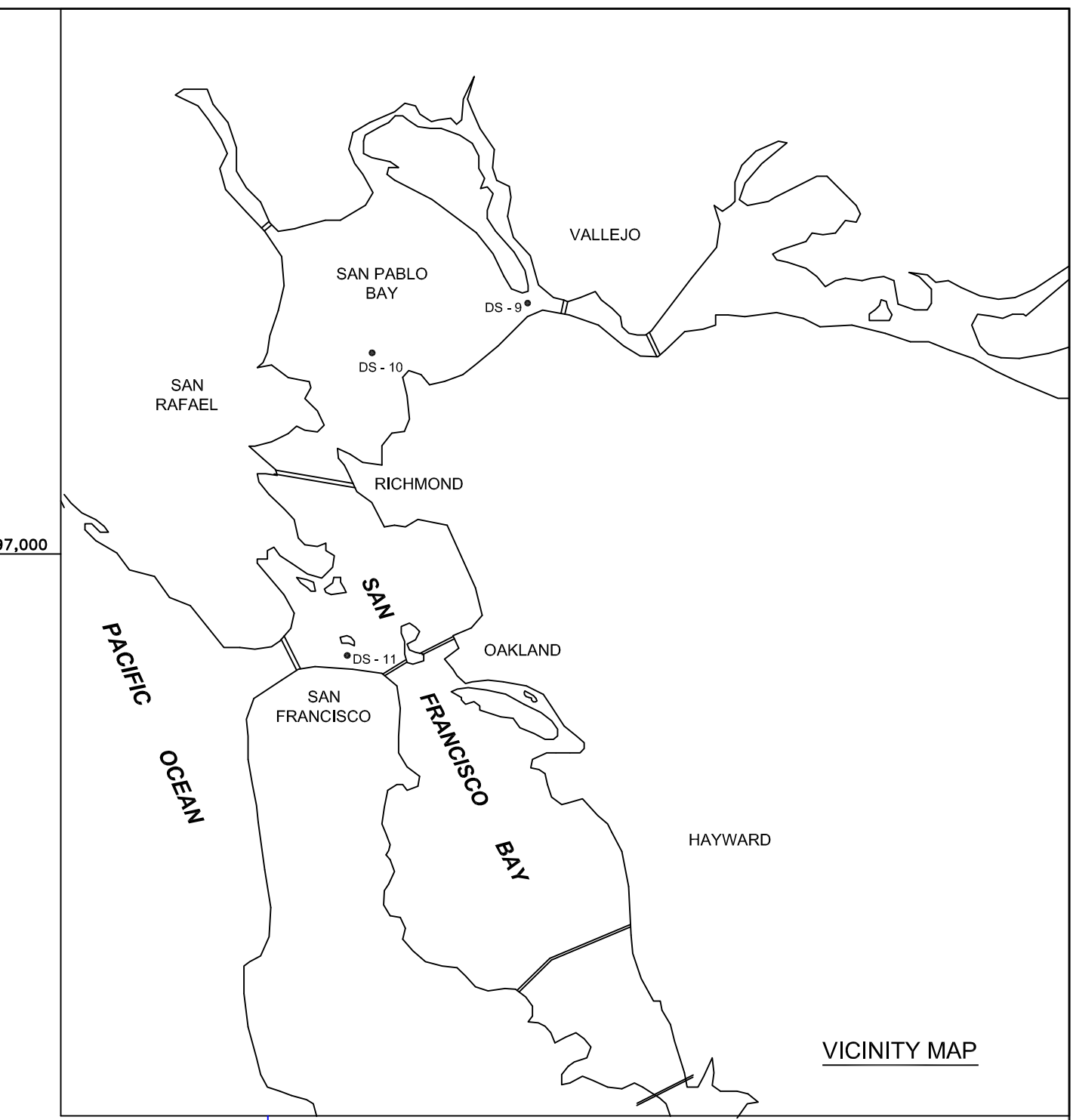
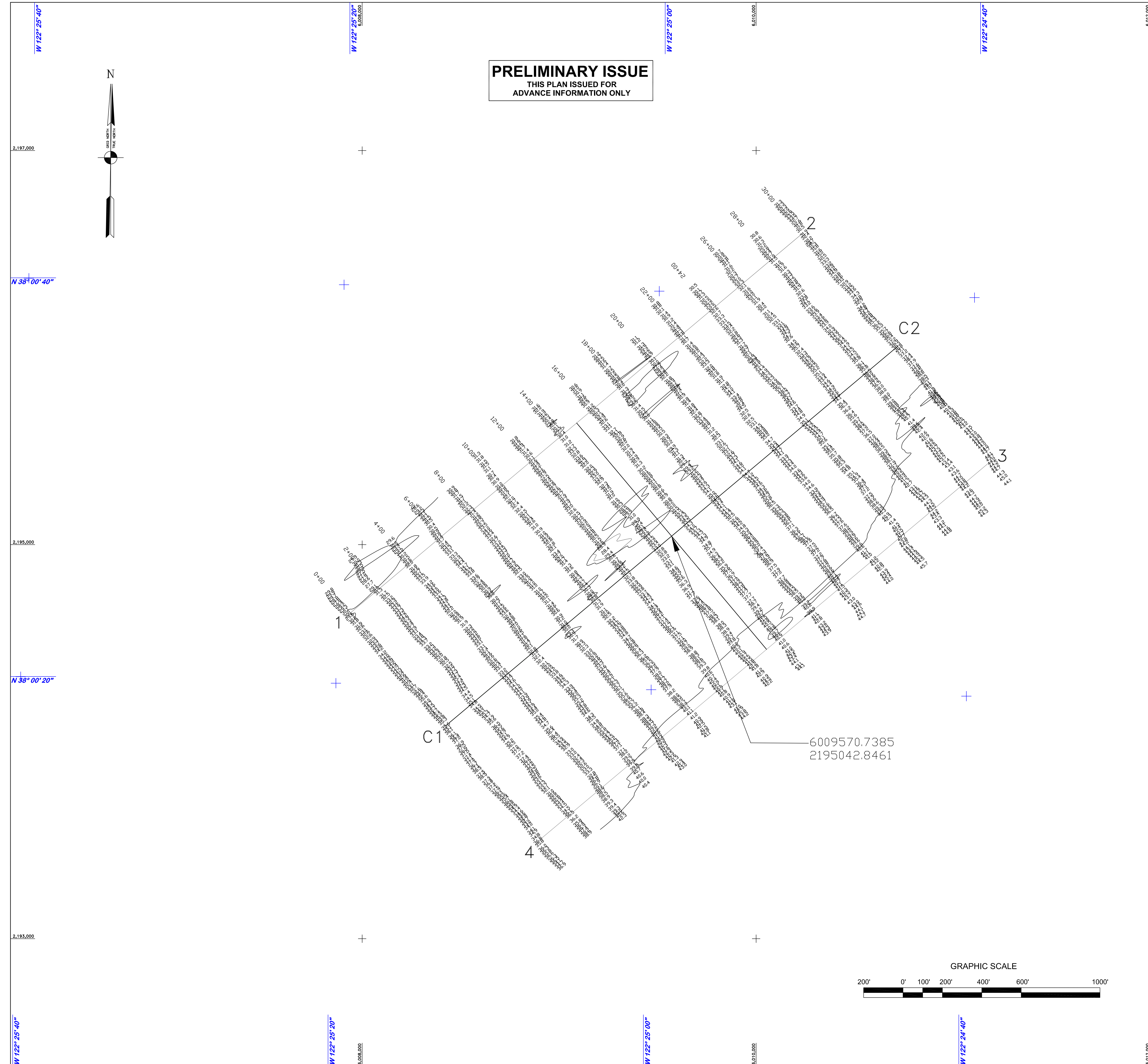
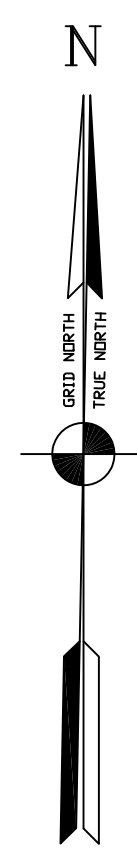


**PRELIMINARY ISSUE**  
THIS PLAN ISSUED FOR  
ADVANCE INFORMATION ONLY



**NOTES:**

DRAWING NOT TO BE USED AS NAVIGATION CHART  
ONLY CHANNEL CONDITION AT DATE OF SURVEY  
THE LOCATION OF ALL NAVIGATION AIDS ARE BASED ON  
INFORMATION PROVIDED BY THE U.S. COAST GUARD  
BUOY LOCATIONS REPRESENT THE POSITION OF THE SINKER ONLY.

SURVEYED BY THE CORPS OF ENGINEERS, 10 JULY 2009.

SOUNDINGS ARE TAKEN BY FATHOMETER AND ARE SHOWN TO THE  
NEAREST FOOT AND TENTHS OF A FOOT.

SOUNDINGS ARE BASED ON THE DATUM OF MEAN LOWER LOW WATER  
AT THE LOCALITY. NGVD 1929.

PLANE GRID, BEARING AND COORDINATES ARE BASED ON THE STATE  
OF CALIFORNIA COORDINATE SYSTEM, LAMBERT CONFORMAL PROJECTION,  
ZONE III NAD 83, CALIFORNIA, AS DESCRIBED IN SPECIAL PUBLICATION  
NO. 253, PUBLISHED BY NATIONAL OCEAN SURVEY.

THE PROJECT DEPTH IS 50 FEET AT M.L.L.W.

SOUNDINGS ARE BASED ON THE TIDE GAUGE LOCATED AT GREEN BEACON NO. 5

VERTICAL CONTROL  
GREEN BEACON NO. 5 TOWILL MARK ELEV. 10.00 FT MLLW

HORIZONTAL CONTROL  
"FLATS" N 590,610.968 E 1,428,045.582 ELEV. 40.00 FT MLLW

**COORDINATES CHART**

CHANNEL PT.	X	Y
1	6007939.5785	2194653.1961
2	6010237.7085	2196581.5561
3	6011201.8885	2195432.4861
4	6008903.7585	2193504.1261

CENTERLINE PT.	X	Y
C1	6008421.6685	2194078.6611
C2	6010719.7977	2196007.0220

DRAWN BY: EWC		MARIN COUNTY		CALIFORNIA	
CHECKED BY: TVW		<p align="center"><b>SAN PABLO BAY</b> DISPOSAL SITE SF - 10 CONDITION SURVEY 10 JULY 2009</p>			
DESIGNED BY:					
SUBMITTED: PC					
APPROVAL RECOMMENDED:		APPROVED:		DATE:	
CHIEF, TECHNICAL SUPPORT SECTION		CHIEF, CONSTRUCTION BRANCH		JOB NO.:	
PREPARED UNDER THE DIRECTION OF LAURANCE M. FARRELL LT. COLONEL, C.E. DISTRICT ENGINEER		SCALE: 1" = 200'		DRAWING NUMBER	
		SHEET: 1 OF 1		3 2 227	