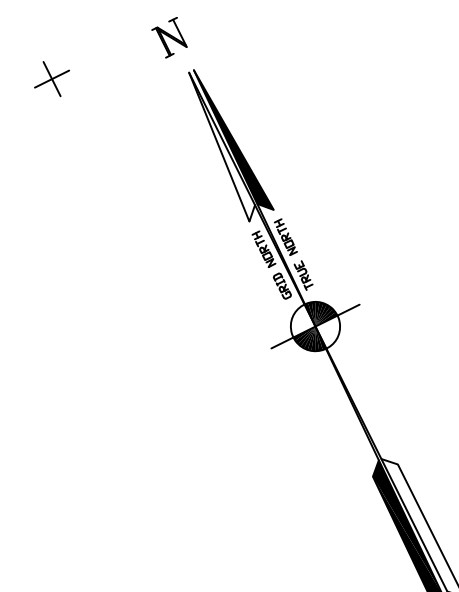


PRELIMINARY ISSUE
DATE: 13 NOVEMBER 2012
THIS PLAN ISSUED FOR
ADVANCE INFORMATION ONLY



MATCHLINE - SHEET 3

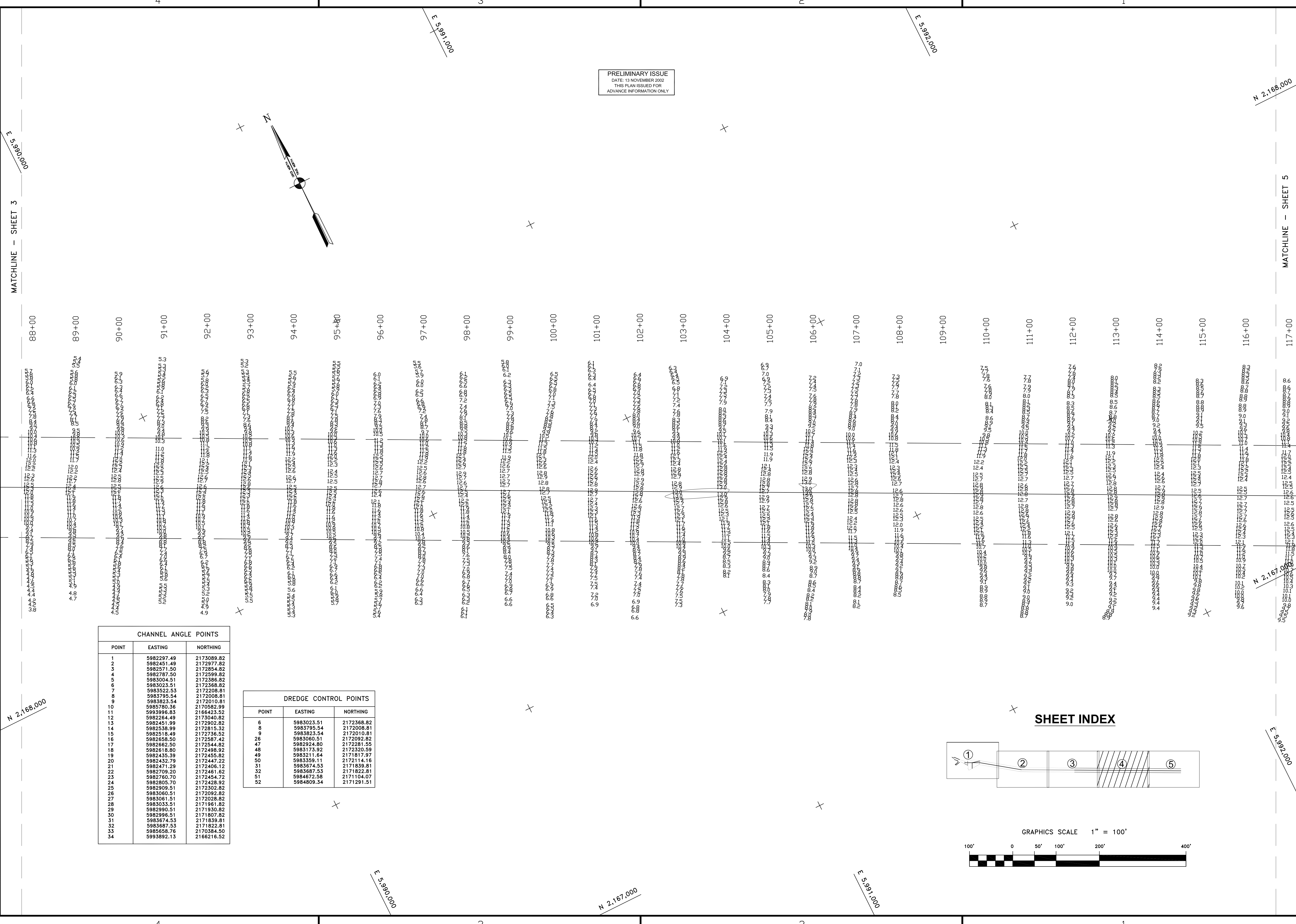
MATCHLINE - SHEET 5

E 5,990,000

E 5,992,000

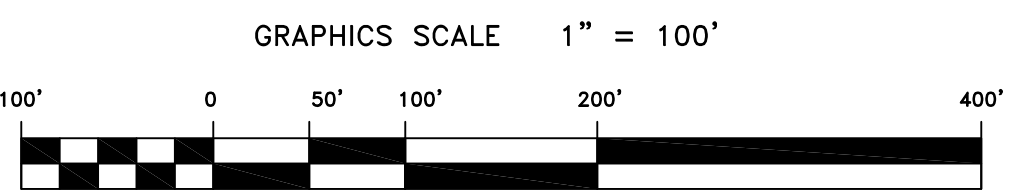
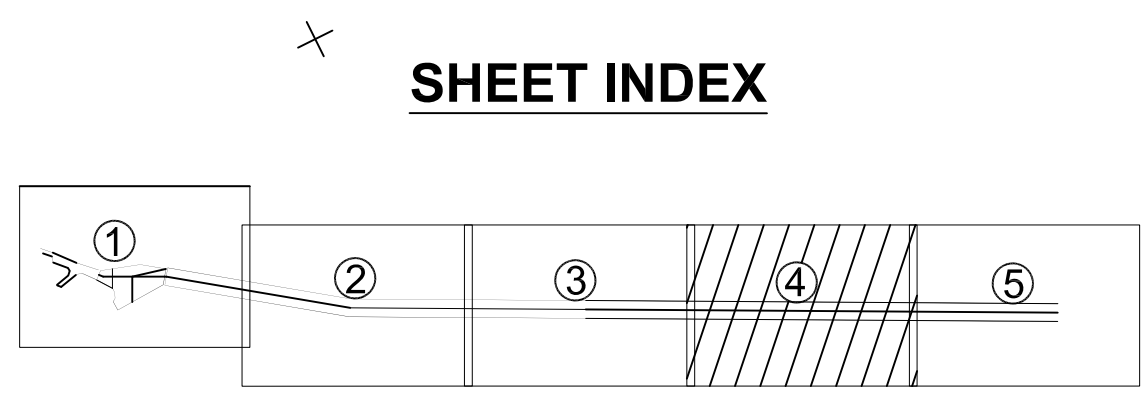
N 2,168,000

N 2,167,000



CHANNEL ANGLE POINTS		
POINT	EASTING	NORTHING
1	5982297.49	2173089.82
2	5982451.49	2172977.82
3	5982571.50	2172854.82
4	5982707.50	2172599.82
5	5983004.51	2172388.82
6	5983023.51	2172368.82
7	5983522.53	2172208.81
8	5983795.54	2172008.81
9	5983823.54	2172010.81
10	5985780.36	2170582.99
11	5985986.65	2166423.53
12	5982254.49	2175040.82
13	5982451.99	2172902.82
14	5982558.99	2172815.32
15	5982518.49	2172498.82
16	5982658.50	2172587.42
17	5982662.50	2172544.82
18	5982618.90	2172488.82
19	5982455.39	2172458.82
20	5982432.79	2172447.22
21	5982471.29	2172406.12
22	5982709.20	2172461.62
23	5982760.70	2172454.72
24	5982805.70	2172428.92
25	5982909.51	2172302.82
26	5983060.51	2172092.82
27	5983061.51	2172028.82
28	5983033.51	2171961.82
29	5982990.51	2171839.81
30	5982996.51	2171807.82
31	5983874.53	2171839.81
32	5983887.53	2171822.81
33	5983658.76	2170384.50
34	5983892.13	2166216.52

DREDGE CONTROL POINTS		
POINT	EASTING	NORTHING
6	5983023.51	2172368.82
8	5983795.54	2172008.81
9	5983823.54	2172010.81
26	5983060.51	2172092.82
47	5982924.80	2172281.55
48	598173.92	2172320.59
49	5983211.64	2171817.97
50	5983359.11	2172114.16
31	5983674.53	2171839.81
52	5983887.53	2171822.81
51	5984672.58	2171104.07
52	5984809.34	2171291.51



US Army Corps
of Engineers
San Francisco District
1455 Market Street
San Francisco, CA 94103

Mark	Description	Date	Appr.

SUBMITTED:		DESIGNED BY:		CHECKED BY:		DRAWN BY:	
PDT	PDT	PDT	PDT	PDT	PDT	PDT	PDT
Hydro Survey Team Leader	Hydro Survey Team Leader	Hydro Survey Team Leader	Hydro Survey Team Leader	Hydro Survey Team Leader	Hydro Survey Team Leader	Hydro Survey Team Leader	Hydro Survey Team Leader
APPROVAL RECOMMENDED:	DATE:	APPROVAL RECOMMENDED:	DATE:	APPROVAL RECOMMENDED:	DATE:	APPROVAL RECOMMENDED:	DATE:
	1/24/2013		1/24/2013		1/24/2013		1/24/2013
CHIEF, Geomatics Section:	SHEET NO.	CHIEF, Geomatics Section:	SHEET NO.	CHIEF, Geomatics Section:	SHEET NO.	CHIEF, Geomatics Section:	SHEET NO.
	4 OF 5		4 OF 5		4 OF 5		4 OF 5
APPROVED:	PREPARED UNDER THE DIRECTION OF	APPROVED:	PREPARED UNDER THE DIRECTION OF	APPROVED:	PREPARED UNDER THE DIRECTION OF	APPROVED:	PREPARED UNDER THE DIRECTION OF
	JOHN K. BAKER		JOHN K. BAKER		JOHN K. BAKER		JOHN K. BAKER
Chief, Construction Branch	LT. COLONEL, C.E., DISTRICT ENGINEER	Chief, Construction Branch	LT. COLONEL, C.E., DISTRICT ENGINEER	Chief, Construction Branch	LT. COLONEL, C.E., DISTRICT ENGINEER	Chief, Construction Branch	LT. COLONEL, C.E., DISTRICT ENGINEER

MARIN COUNTY CALIFORNIA
LARKSPUR FERRY TERMINAL
CONDITION SURVEY
19 DECEMBER 2012
23 JANUARY 2013

Sheet reference number
G4