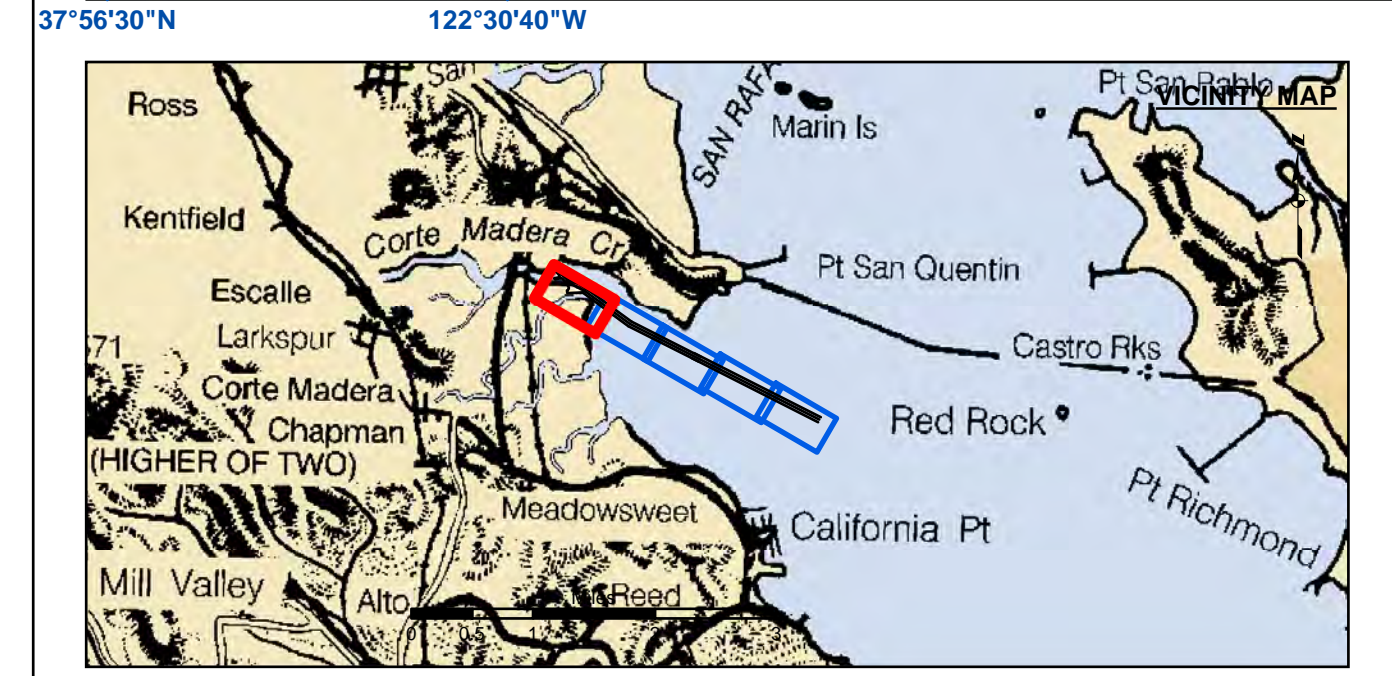
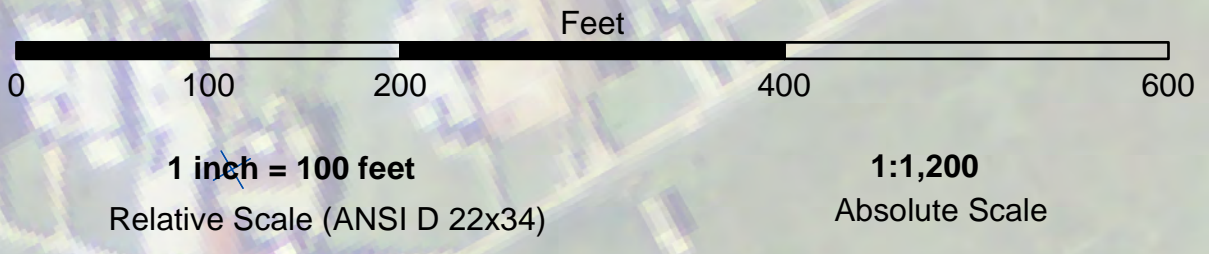


Angle Point	Easting	Northing
02	5982451.49	2172977.82
03	5982571.50	2172854.82
04	5982787.50	2172599.82
05	5983004.51	2172386.82
06	5983023.51	2172368.82
07	5983522.53	2172208.81
08	5983795.54	2172008.81
09	5983823.54	2172010.81
10	5985780.36	2170582.99
11	5993996.83	2166423.52
13	5982451.99	2172902.82
14	5982536.99	2172815.32
15	5982518.49	2172736.52
16	5982658.50	2172587.42
17	5982662.50	2172544.82
18	5982818.80	2172498.82
19	5982435.39	2172455.82
20	5982432.79	2172447.32
21	5982471.29	2172406.12
22	5982709.20	2172461.62
23	5982760.70	2172454.72
24	5982805.70	2172428.82
25	5982909.51	2172302.82
26	5983080.51	2172092.82
27	5983061.51	2172028.82
28	5983033.51	2171961.82
29	5982990.51	2171930.82
30	5982996.51	2171807.82
31	5983874.53	2171839.81
32	5983687.53	2171822.81
33	5985658.76	2170384.50
34	5993892.13	2166216.52
C01	5982979.38	2173228.56
C02	5983018.81	2172283.62
C03	5983359.11	2172114.22
C04	5983755.50	2171916.80
C05	5985719.55	2170483.75
C06	5986755.89	2169946.66
C07	5993944.49	2166320.03



	Federal Navigation Channel		Beacon, General		Countours
	Shoaling Area		Obstruction Point		-13
	Placement Area		Navigation Buoy		-12
	Anchorage Area		Navigation Buoy		-11
	Wreck Area		Shoalest Sounding*		-10
	Submerged Wreck				-9
	Angle Point				

NOTES:
 DRAWING NOT TO BE USED FOR NAVIGATION, ONLY CHANNEL CONDITION AT DATE OF SURVEY.
 THE LOCATION OF ALL NAVIGATION AIDS ARE BASED ON INFORMATION PROVIDED BY THE U.S. COAST GUARD. BUOY LOCATIONS REPRESENT THE POSITION OF THE SINKER ONLY.
 SURVEYED BY THE CORPS OF ENGINEERS.
 SOUNDINGS WERE TAKEN BY FATHOMETER AND ARE SHOWN TO THE NEAREST TENTH OF A FOOT.
 SOUNDINGS ARE BASED ON THE DATUM OF MEAN LOWER LOW WATER AT THE LOCALITY.

PLANE GRID AND COORDINATES ARE BASED ON THE STATE OF CALIFORNIA COORDINATE SYSTEM, LAMBERT CONFORMAL PROJECTION, ZONE III NAD 83, CALIFORNIA, AS DESCRIBED IN SPECIAL PUBLICATION NO. 235, PUBLISHED BY NATIONAL OCEAN SURVEY.

PROJECT DEPTH:
 TURNING BASIN -15 FT. AT M.L.L.W.
 MAIN CHANNEL -13 FT. AT M.L.L.W.

SOUNDINGS ARE BASED ON THE TIDE GAUGE LOCATED AT SAN QUENTIN PRISON PARKING LOT & BERTH 1 AT LARKSPUR LANDING FERRY TERMINAL.

VERTICAL CONTROL:
 BENCHMARK '4874C' 1977 USC&GS DISK ELEV. 11.55 FT MLLW.
 BENCHMARK '06' 1936 USC&GS DISK ELEV. 34.92 FT MLLW.

HORIZONTAL CONTROL:
 COAST GUARD D-BEACON

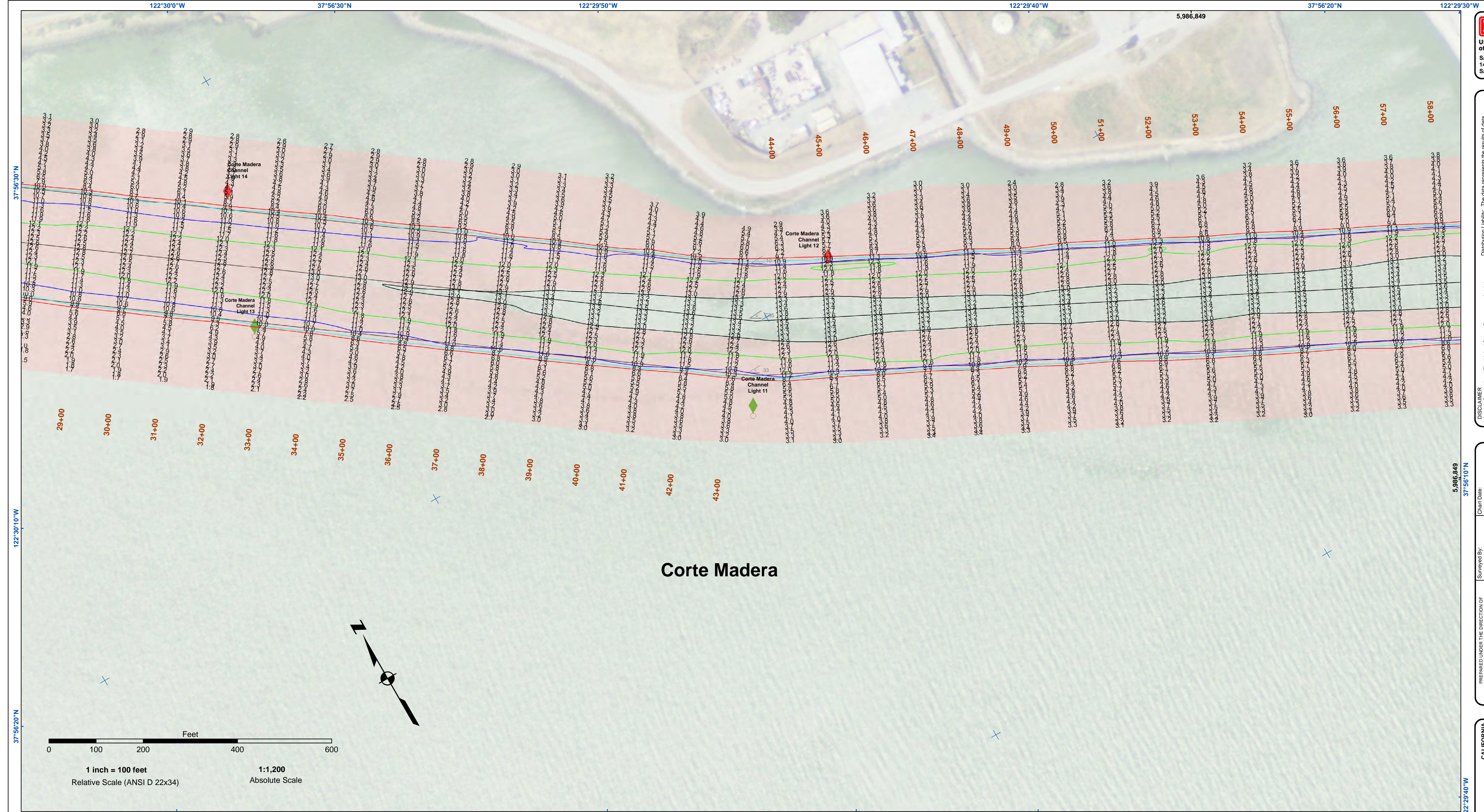
US Army Corps of Engineers
 San Francisco District
 1455 Market Street
 San Francisco, CA 94103

DISCLAIMER: The United States Government furnishes these data as a public service and does not warrant, express or implied, the accuracy, completeness, or reliability of the data. The user is responsible for the results of any application of the data for other than its intended purpose. Distribution Liability: The data represents the results of data collection/processing for a specific US Army Corps of Engineers activity and indicates the general existing conditions. The user is responsible for the results of any application of the data for other than its intended purpose.

Prepared Under the Direction of TRAVIS J. RAYFIELD LT COLONEL, C.E., DISTRICT ENGINEER	Chart Date: Nov 30, 2017
Submitted: Hydro Survey Team Leader	Designed by: PDT
Recommended: Chief, Hydro Survey Section	Drawn by: PDT
Approved: Chief, Construction Branch	

CALIFORNIA
 MARIN COUNTY
LARKSPUR FERRY TERMINAL
 CONDITION SURVEY
 06 NOVEMBER 2017

Sheet Reference Number
1 of 5



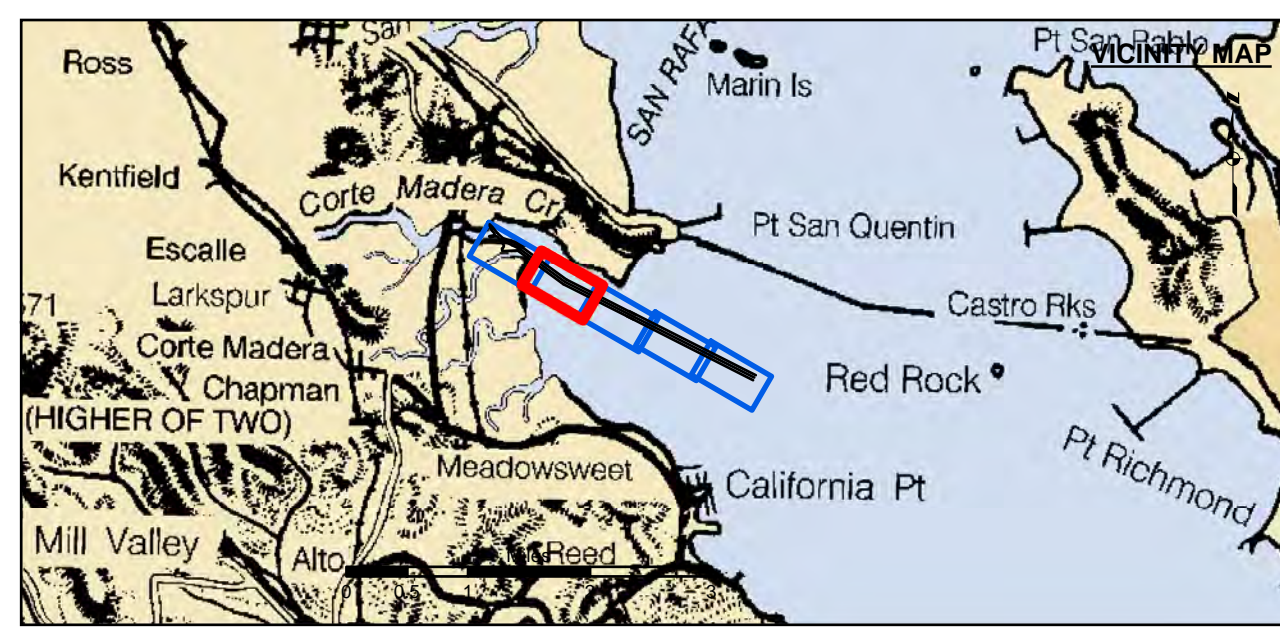
DISCLAIMER: The United States Government makes no warranty, expressed or implied concerning the accuracy, completeness, or reliability of the data furnished. The United States shall be under no liability whatsoever to any person by reason of any use made thereof. These data belong to the Government. Therefore the recipient may not transfer these data to others without also transferring this Disclaimer.

Access Constraints: The United States Government makes no warranty, expressed or implied concerning the accuracy, completeness, or reliability of the data furnished. The United States shall be under no liability whatsoever to any person by reason of any use made thereof. These data belong to the Government. Therefore the recipient may not transfer these data to others without also transferring this Disclaimer.

Distribution/ Liability: The data represents the results of data collection/processing for a specific US Army Corps of Engineers activity and indicates the general existing conditions. The user is responsible for the results of any of the application of the data for other than its intended purpose.

Prepared Under the Direction of TRAVIS J. RAYFIELD LT COLONEL, C.E., DISTRICT ENGINEER	Surveyed By:	Chart Date:
Submitted: Hydro Survey Team Leader	Plotted By: PDT	Nov 30, 2017
Recommended: Chief, Hydro Survey Section	Checked By: PDT	Designed by:
Approved: Chief, Construction Branch	Drawn by: PDT	

CALIFORNIA
MARIN COUNTY
LARKSPUR FERRY TERMINAL
CONDITION SURVEY
06 NOVEMBER 2017



Federal Navigation Channel	Beacon, General	Countours
Shoaling Area	Obstruction Point	-13
Placement Area	Navigation Buoy	-12
Anchorage Area	Navigation Buoy	-11
Wreck Area	Shoalest Sounding*	-10
Submerged Wreck		-9
Angle Point		

NOTES:
DRAWING NOT TO BE USED FOR NAVIGATION, ONLY CHANNEL CONDITION AT DATE OF SURVEY. THE LOCATION OF ALL NAVIGATION AIDS ARE BASED ON INFORMATION PROVIDED BY THE U.S. COAST GUARD. BUOY LOCATIONS REPRESENT THE POSITION OF THE SINKER ONLY.

SURVEYED BY THE CORPS OF ENGINEERS.
SOUNDINGS WERE TAKEN BY FATHOMETER AND ARE SHOWN TO THE NEAREST TENTH OF A FOOT.
SOUNDINGS ARE BASED ON THE DATUM OF MEAN LOWER LOW WATER AT THE LOCALITY.

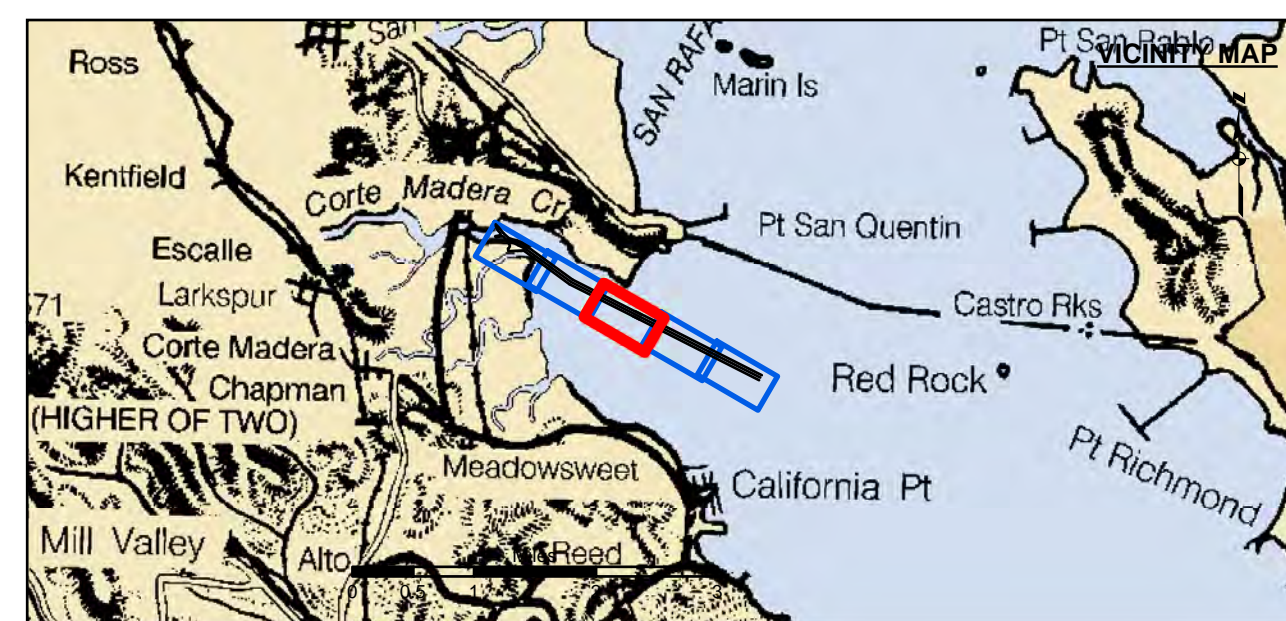
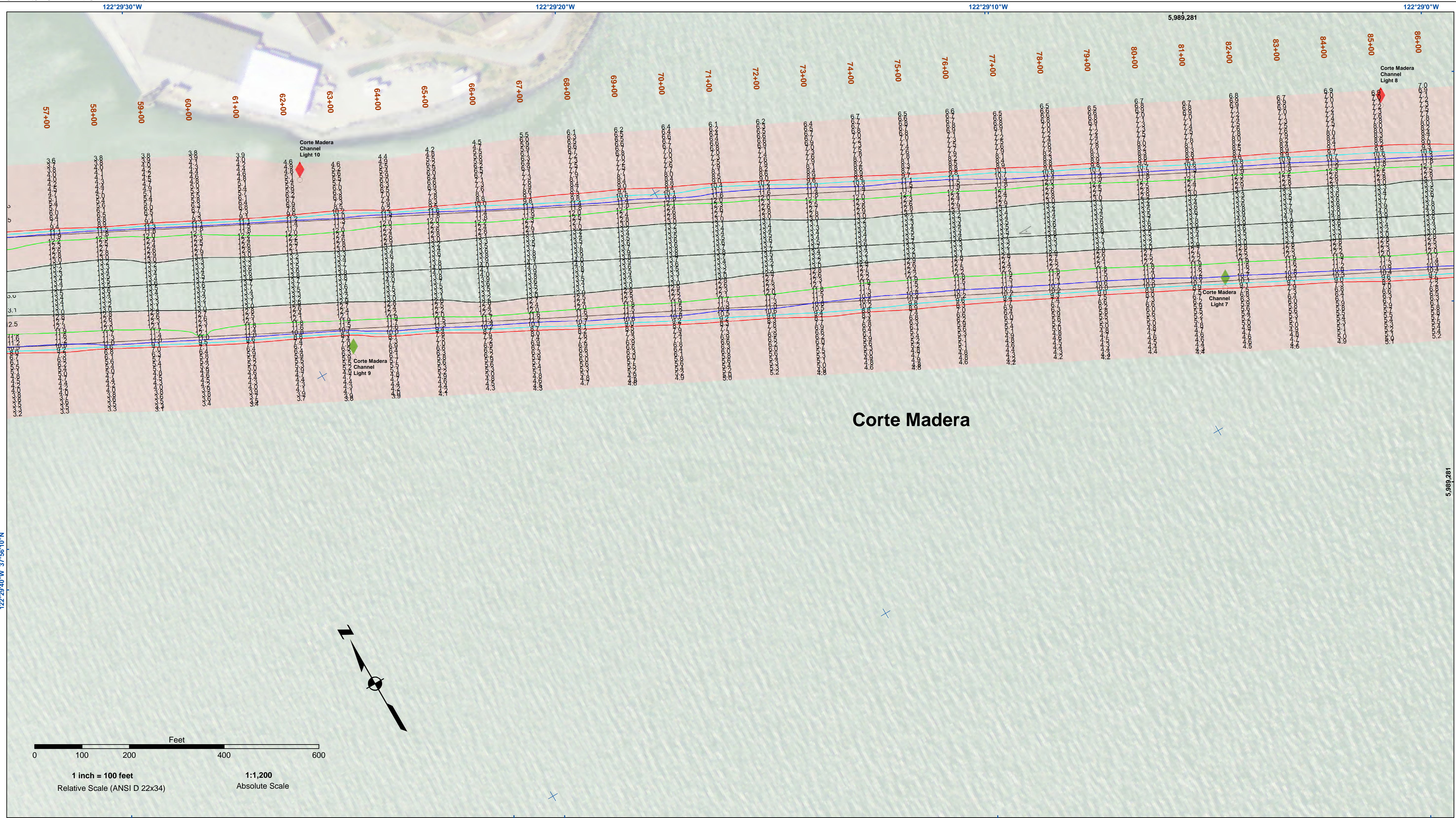
PLANE GRID AND COORDINATES ARE BASED ON THE STATE OF CALIFORNIA COORDINATE SYSTEM, LAMBERT CONFORMAL PROJECTION, ZONE III NAD 83, CALIFORNIA, AS DESCRIBED IN SPECIAL PUBLICATION NO. 235, PUBLISHED BY NATIONAL OCEAN SURVEY.

PROJECT DEPTH:
TURNING BASIN -15 FT. AT M.L.L.W.
MAIN CHANNEL -13 FT. AT M.L.L.W.

SOUNDINGS ARE BASED ON THE TIDE GAUGE LOCATED AT SAN QUENTIN PRISON PARKING LOT & BERTH 1 AT LARKSPUR LANDING FERRY TERMINAL.

VERTICAL CONTROL:
BENCHMARK '4874C' 1977 USC&GS DISK ELEV. 11.55 FT MLLW.
BENCHMARK '06' 1936 USC&GS DISK ELEV. 34.92 FT MLLW.

HORIZONTAL CONTROL:
COAST GUARD D-BEACON



	Federal Navigation Channel		Beacon, General		Contours
	Shoaling Area		Obstruction Point		-13
	Placement Area		Navigation Buoy		-12
	Anchorage Area		Navigation Buoy		-11
	Wreck Area		Shoalest Sounding*		-10
	Submerged Wreck				-9
	Angle Point				

NOTES:
 DRAWING NOT TO BE USED FOR NAVIGATION, ONLY CHANNEL CONDITION AT DATE OF SURVEY.
 THE LOCATION OF ALL NAVIGATION AIDS ARE BASED ON INFORMATION PROVIDED BY THE U.S. COAST GUARD. BUOY LOCATIONS REPRESENT THE POSITION OF THE SINKER ONLY.

SURVEYED BY THE CORPS OF ENGINEERS.
 SOUNDINGS WERE TAKEN BY FATHOMETER AND ARE SHOWN TO THE NEAREST TENTH OF A FOOT.
 SOUNDINGS ARE BASED ON THE DATUM OF MEAN LOWER LOW WATER AT THE LOCALITY.

PLANE GRID AND COORDINATES ARE BASED ON THE STATE OF CALIFORNIA COORDINATE SYSTEM, LAMBERT CONFORMAL PROJECTION, ZONE III NAD 83, CALIFORNIA, AS DESCRIBED IN SPECIAL PUBLICATION NO. 235, PUBLISHED BY NATIONAL OCEAN SURVEY.

PROJECT DEPTH:
 TURNING BASIN -15 FT. AT M.L.L.W.
 MAIN CHANNEL -13 FT. AT M.L.L.W.

SOUNDINGS ARE BASED ON THE TIDE GAUGE LOCATED AT SAN QUENTIN PRISON PARKING LOT & BERTH 1 AT LARKSPUR LANDING FERRY TERMINAL.

VERTICAL CONTROL:
 BENCHMARK '4874C' 1977 USC&GS DISK ELEV. 11.55 FT MLLW.
 BENCHMARK '06' 1936 USC&GS DISK ELEV. 34.92 FT MLLW.

HORIZONTAL CONTROL:
 COAST GUARD D-BEACON



DISCLAIMER: The United States Government furnishes no warranty, expressed or implied, concerning the accuracy, completeness, or reliability of the data furnished. The United States shall be under no liability whatsoever to any person by reason of any use made thereof. These data belong to the Government. Therefore the recipient may not transfer these data to others without also transferring this Disclaimer.

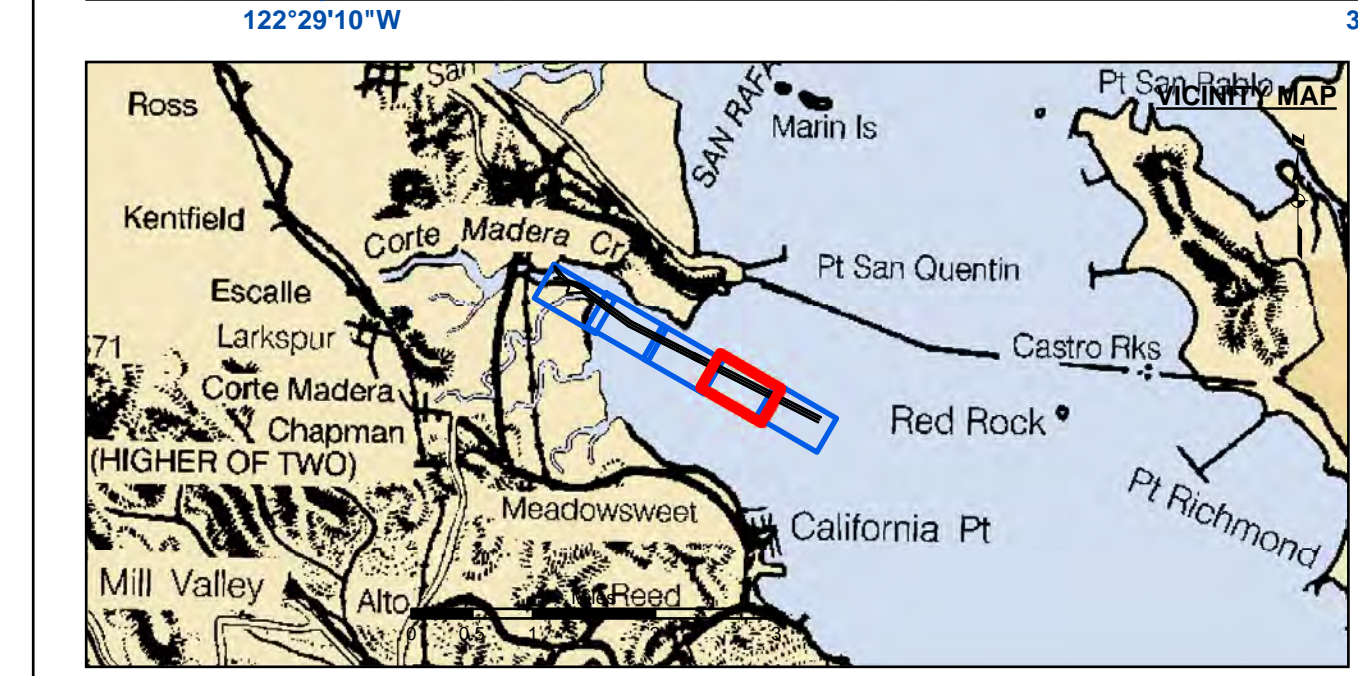
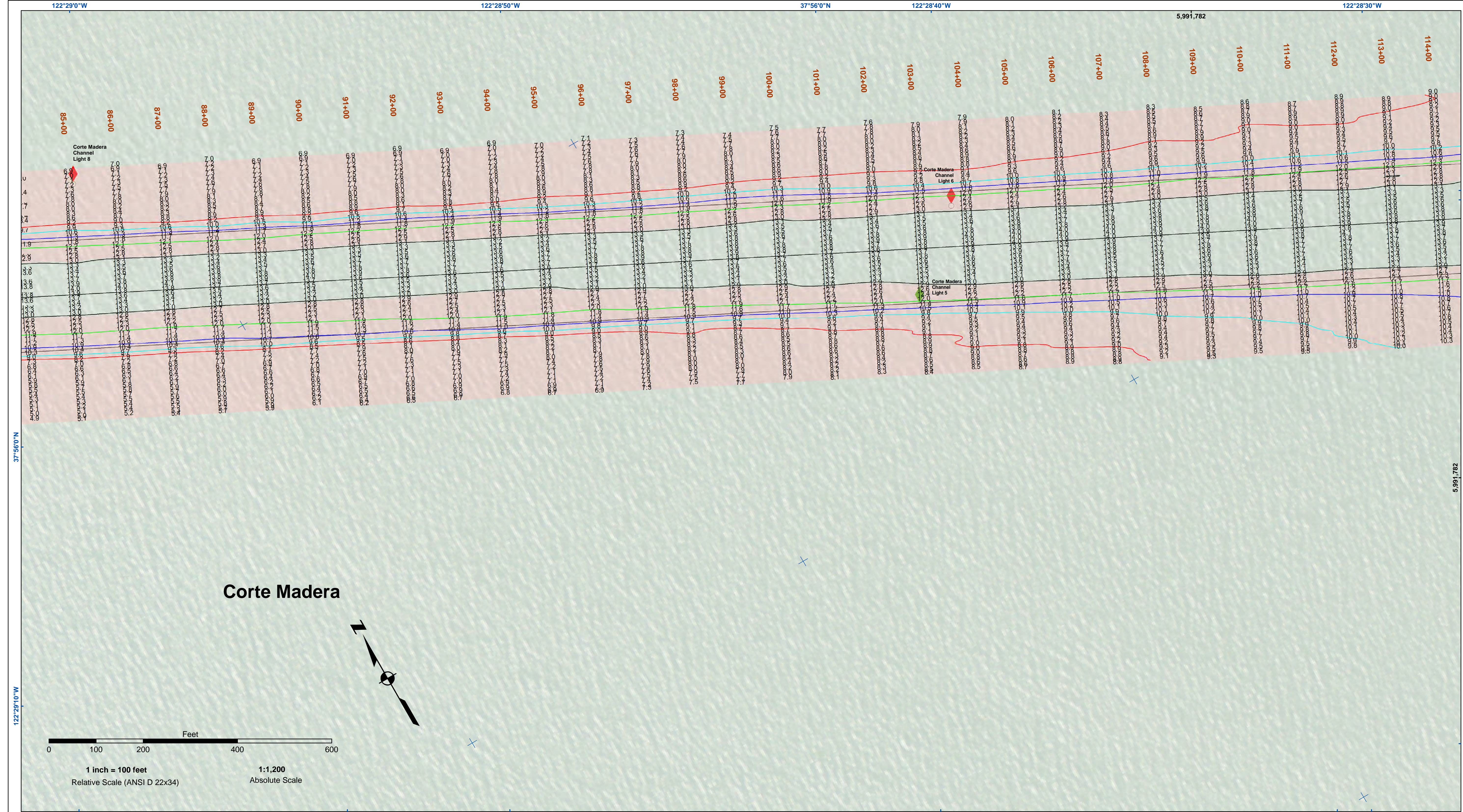
Access Constraints: The United States Government furnishes no warranty, expressed or implied, concerning the accuracy, completeness, or reliability of the data furnished. The United States shall be under no liability whatsoever to any person by reason of any use made thereof. These data belong to the Government. Therefore the recipient may not transfer these data to others without also transferring this Disclaimer.

Distribution Liability: The data represents the results of data collection/processing for a specific US Army Corps of Engineers activity and indicates the general existing conditions, accuracy, specifications. The user is responsible for the results of any of the application of the data for other than its intended purpose.

PREPARED UNDER THE DIRECTION OF TRAVIS J. RAYFIELD LT. COLONEL, C.E., DISTRICT ENGINEER	Surveyed By:	Chart Date:
Submitted: Hydro Survey Team Leader	Plotted By:	Nov 30, 2017
Recommended: Chief, Hydro Survey Section	Checked By:	Designed by:
Approved: Chief, Construction Branch	PDT	PDT
		Drawn by:
		PDT

CALIFORNIA
 MARIN COUNTY
LARKSPUR FERRY TERMINAL
 CONDITION SURVEY
 06 NOVEMBER 2017

Sheet Reference Number
 3 of 5



	Federal Navigation Channel		Beacon, General		Contours
	Shoaling Area		Obstruction Point		-13
	Placement Area		Navigation Buoy		-12
	Anchorage Area		Navigation Buoy		-11
	Wreck Area		Shoalest Sounding*		-10
	Submerged Wreck				-9
	Angle Point				

NOTES:
 DRAWING NOT TO BE USED FOR NAVIGATION, ONLY CHANNEL CONDITION AT DATE OF SURVEY.
 THE LOCATION OF ALL NAVIGATION AIDS ARE BASED ON INFORMATION PROVIDED BY THE U.S. COAST GUARD. BUOY LOCATIONS REPRESENT THE POSITION OF THE SINKER ONLY.
 SURVEYED BY THE CORPS OF ENGINEERS.
 SOUNDINGS WERE TAKEN BY FATHOMETER AND ARE SHOWN TO THE NEAREST TENTH OF A FOOT.
 SOUNDINGS ARE BASED ON THE DATUM OF MEAN LOWER LOW WATER AT THE LOCALITY.

PLANE GRID AND COORDINATES ARE BASED ON THE STATE OF CALIFORNIA COORDINATE SYSTEM, LAMBERT CONFORMAL PROJECTION, ZONE III NAD 83, CALIFORNIA, AS DESCRIBED IN SPECIAL PUBLICATION NO. 235, PUBLISHED BY NATIONAL OCEAN SURVEY.
 PROJECT DEPTH:
 TURNING BASIN -15 FT. AT M.L.L.W.
 MAIN CHANNEL -13 FT. AT M.L.L.W.
 SOUNDINGS ARE BASED ON THE TIDE GAUGE LOCATED AT SAN QUENTIN PRISON PARKING LOT & BERTH 1 AT LARKSPUR LANDING FERRY TERMINAL.
 VERTICAL CONTROL:
 BENCHMARK '4874C' 1977 USC&GS DISK ELEV. 11.55 FT MLLW.
 BENCHMARK '06' 1936 USC&GS DISK ELEV. 34.92 FT MLLW.
 HORIZONTAL CONTROL:
 COAST GUARD D-BEACON



DISCLAIMER: The United States Government furnishes no warranty, expressed or implied, concerning the accuracy, completeness, or reliability of the data furnished. The United States shall be under no liability whatsoever to any person by reason of any use made thereof. These data belong to the Government. Therefore the recipient may not transfer these data to others without also transferring this Disclaimer.

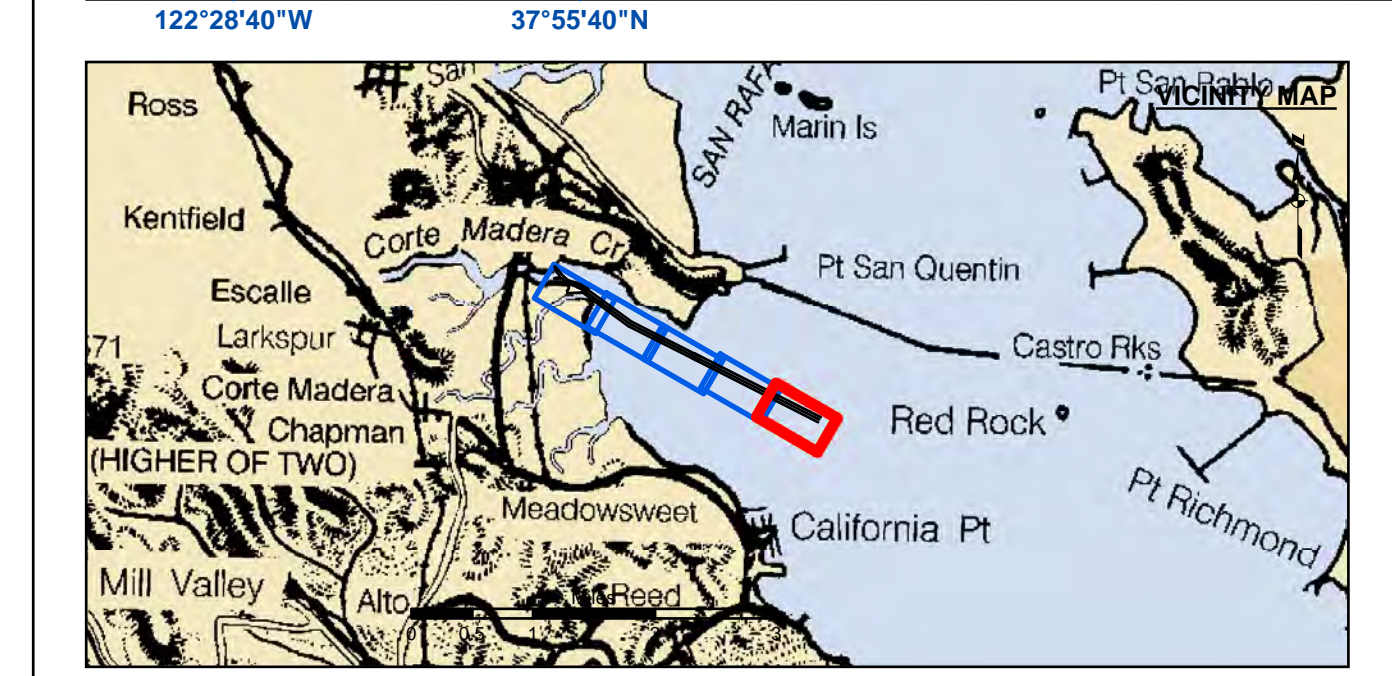
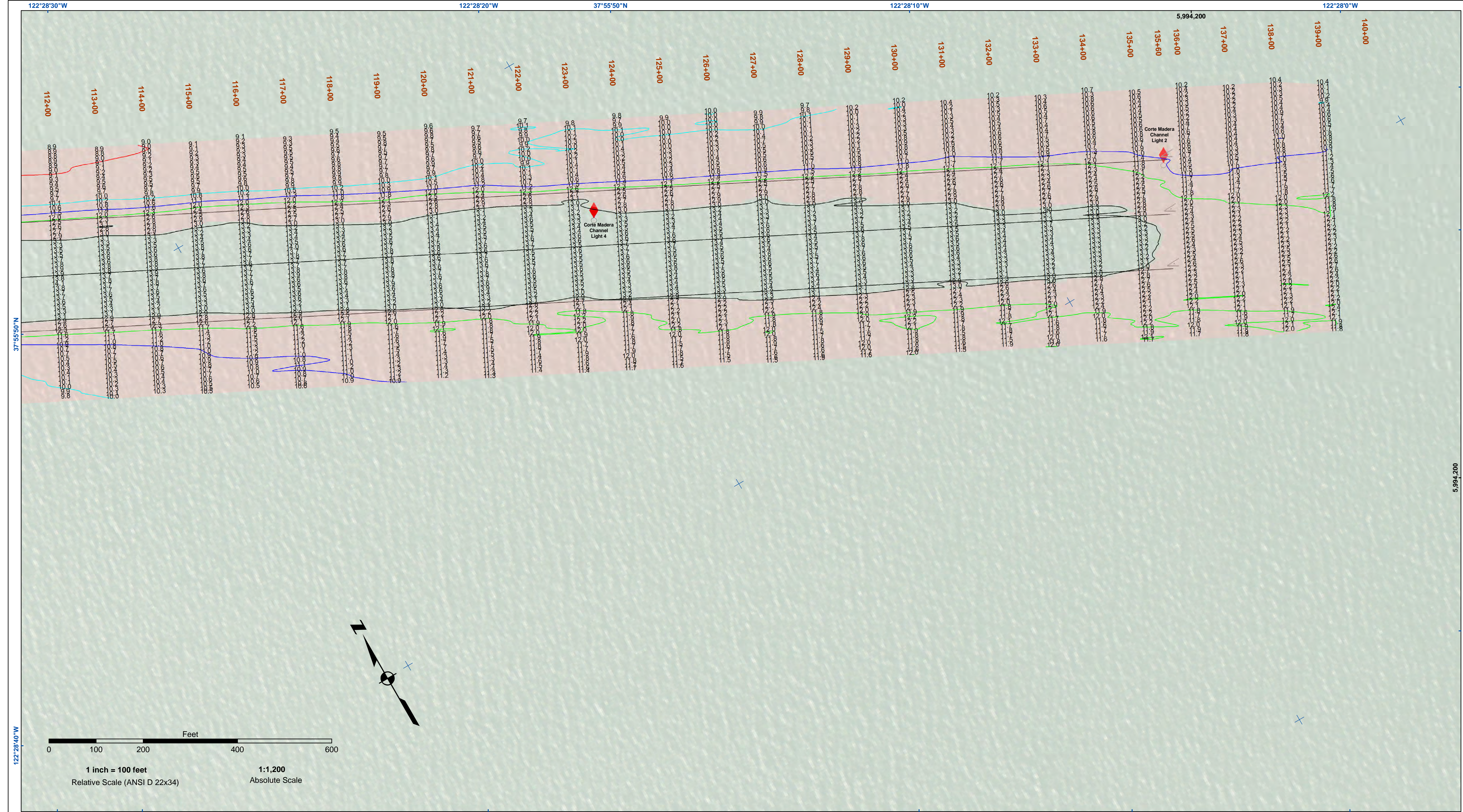
Access Constraints: The United States Government makes no warranty, expressed or implied, concerning the accuracy, completeness, or reliability of the data furnished. The user is responsible for the results of any application of the data for other than its intended purpose.

Distribution Liability: The data represents the results of data collection/processing for a specific US Army Corps of Engineers activity and indicates the general existing conditions. The user is responsible for the results of any application of the data for other than its intended purpose.

PREPARED UNDER THE DIRECTION OF TRAVIS J. RAYFIELD LT COLONEL, C.E., DISTRICT ENGINEER	Surveyed By:	Chart Date:
Submitted: Hydro Survey Team Leader	Plotted By: PDT	Nov 30, 2017
Recommended: Chief, Hydro Survey Section	Checked By: PDT	Designed by:
Approved: Chief, Construction Branch	Drawn by: PDT	Drawn by: PDT

CALIFORNIA
 MARIN COUNTY
LARKSPUR FERRY TERMINAL
 CONDITION SURVEY
 06 NOVEMBER 2017

Sheet
Reference
Number
4 of 5



	Federal Navigation Channel		Beacon, General		Countours
	Shoaling Area		Navigation Buoy		-13
	Placement Area		Navigation Buoy		-12
	Anchorage Area		Shoalest Sounding*		-11
	Wreck Area				-10
	Submerged Wreck				-9
	Angle Point				

NOTES:
 DRAWING NOT TO BE USED FOR NAVIGATION, ONLY CHANNEL CONDITION AT DATE OF SURVEY.
 THE LOCATION OF ALL NAVIGATION AIDS ARE BASED ON INFORMATION PROVIDED BY THE U.S. COAST GUARD. BUOY LOCATIONS REPRESENT THE POSITION OF THE SINKER ONLY.

SURVEYED BY THE CORPS OF ENGINEERS.
 SOUNDINGS WERE TAKEN BY FATHOMETER AND ARE SHOWN TO THE NEAREST TENTH OF A FOOT.
 SOUNDINGS ARE BASED ON THE DATUM OF MEAN LOWER LOW WATER AT THE LOCALITY.

PLANE GRID AND COORDINATES ARE BASED ON THE STATE OF CALIFORNIA COORDINATE SYSTEM, LAMBERT CONFORMAL PROJECTION, ZONE III NAD 83, CALIFORNIA, AS DESCRIBED IN SPECIAL PUBLICATION NO. 235, PUBLISHED BY NATIONAL OCEAN SURVEY.

PROJECT DEPTH:
 TURNING BASIN -15 FT. AT M.L.L.W.
 MAIN CHANNEL -13 FT. AT M.L.L.W.

SOUNDINGS ARE BASED ON THE TIDE GAUGE LOCATED AT SAN QUENTIN PRISON PARKING LOT & BERTH 1 AT LARKSPUR LANDING FERRY TERMINAL.

VERTICAL CONTROL:
 BENCHMARK '4874C' 1977 USC&GS DISK ELEV. 11.55 FT MLLW.
 BENCHMARK '06' 1936 USC&GS DISK ELEV. 34.92 FT MLLW.

HORIZONTAL CONTROL:
 COAST GUARD D-BEACON

US Army Corps of Engineers
 San Francisco District
 1455 Market Street
 San Francisco, CA 94103

DISCLAIMER: The United States Government furnishes no warranty, expressed or implied, concerning the accuracy, completeness, or reliability of the data furnished. The United States shall be under no liability whatsoever to any person by reason of any use made thereof. These data belong to the Government. Therefore the recipient may not transfer these data to others without also transferring this disclaimer.

Access Constraints: The United States Government furnishes no warranty, expressed or implied, concerning the accuracy, completeness, or reliability of the data furnished. The United States shall be under no liability whatsoever to any person by reason of any use made thereof. These data belong to the Government. Therefore the recipient may not transfer these data to others without also transferring this disclaimer.

Distribution/Labeling: The data represent the results of data collection/processing for a specific project for a specific purpose. Engineers activity and indicate the general existing conditions. The user is responsible for the results of any application of the data for other than its intended purpose.

PREPARED UNDER THE DIRECTION OF TRAVIS J. RAYFIELD LT COLONEL, C.E., DISTRICT ENGINEER	Surveyed By:	Chart Date:
Submitted: Hydro Survey Team Leader	Plotted By: PDT	Nov 30, 2017
Recommended: Chief, Hydro Survey Section	Checked By: PDT	Designed by: PDT
Approved: Chief, Construction Branch	Drawn by: PDT	

CALIFORNIA
LARKSPUR FERRY TERMINAL
 CONDITION SURVEY
 06 NOVEMBER 2017

Sheet Reference Number
5 of 5