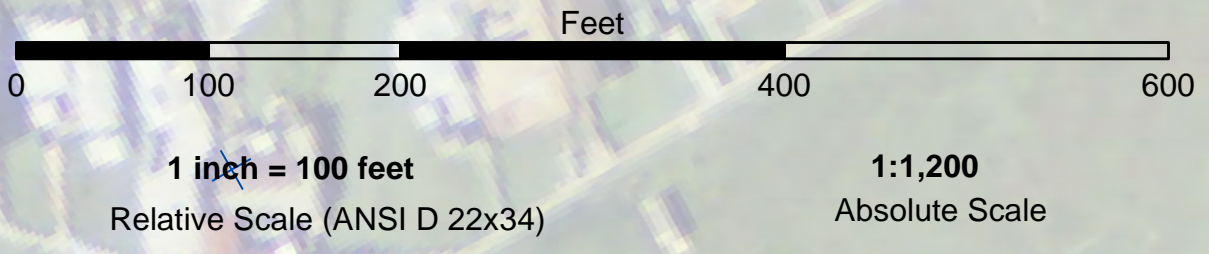
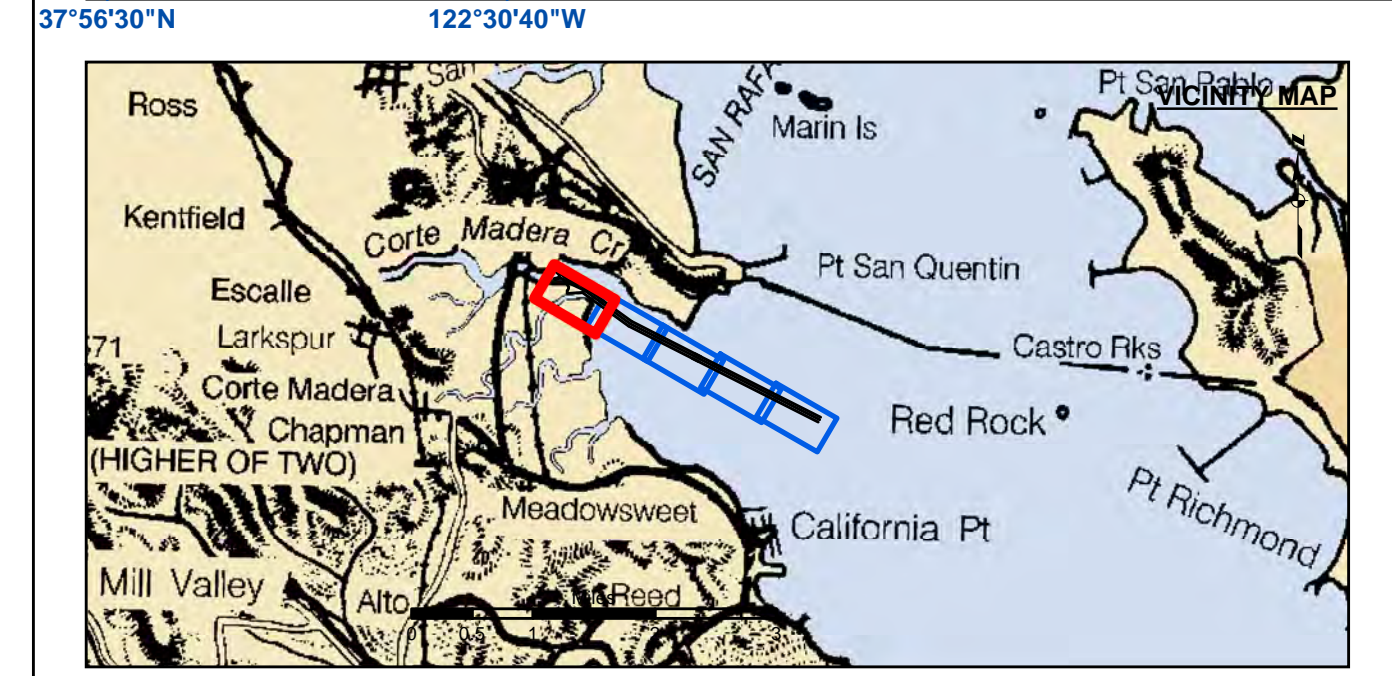


Angle Point	Easting	Northing
02	5982451.49	2172977.82
03	5982571.50	2172854.82
04	5982787.50	2172599.82
05	5983004.51	2172386.82
06	5983023.51	2172368.82
07	5983522.53	2172208.81
08	5983795.54	2172008.81
09	5983823.54	2172010.81
10	5985780.36	2170582.99
11	5993996.83	2166423.52
13	5982451.99	2172902.82
14	5982538.99	2172815.32
15	5982518.49	2172736.52
16	5982658.50	2172587.42
17	5982662.50	2172544.82
18	5982918.00	2172498.82
19	5982435.39	2172455.82
20	5982432.78	2172447.22
21	5982471.29	2172406.12
22	5982709.20	2172461.62
23	5982760.70	2172454.72
24	5982805.70	2172428.92
25	5982909.51	2172302.82
26	5983060.51	2172092.82
27	5983061.51	2172028.82
28	5983033.51	2171961.82
29	5982990.51	2171930.82
30	5982996.51	2171807.82
31	5983674.53	2171839.81
32	5983687.53	2171822.81
33	5985658.76	2170384.50
34	5993892.13	2166216.52
C01	5982979.38	2172328.56
C02	5983018.81	2172283.62
C03	5983359.11	2172114.22
C04	5983755.50	2171916.80
C05	5985719.55	2170483.75
C06	5986755.89	2168946.68
C07	5993944.49	2168320.03



PRELIMINARY ISSUE
THIS PLAN ISSUED FOR
ADVANCE INFORMATION ONLY



Federal Navigation Channel	Beacon, General	Contours
Shoaling Area	Obstruction Point	
Placement Area	Navigation Buoy	
Anchorage Area	Navigation Buoy	
Wreck Area	Shoalest Sounding*	
Submerged Wreck		-13
Angle Point		-12
		-11
		-10
		-9

NOTES:
DRAWING NOT TO BE USED FOR NAVIGATION. ONLY CHANNEL CONDITION AT DATE OF SURVEY.
THE LOCATION OF ALL NAVIGATION AIDS ARE BASED ON INFORMATION PROVIDED BY THE U.S. COAST GUARD. BUOY LOCATIONS REPRESENT THE POSITION OF THE SINKER ONLY.
SURVEYED BY THE CORPS OF ENGINEERS.
SOUNDINGS WERE TAKEN BY FATHOMETER AND ARE SHOWN TO THE NEAREST TENTH OF A FOOT.
SOUNDINGS ARE BASED ON THE DATUM OF MEAN LOWER LOW WATER AT THE LOCALITY.

PLANE GRID AND COORDINATES ARE BASED ON THE STATE OF CALIFORNIA COORDINATE SYSTEM, LAMBERT CONFORMAL PROJECTION, ZONE III NAD 83, CALIFORNIA, AS DESCRIBED IN SPECIAL PUBLICATION NO. 235, PUBLISHED BY NATIONAL OCEAN SURVEY.

PROJECT DEPTH:
TURNING BASIN -15 FT. AT M.L.L.W.
MAIN CHANNEL -13 FT. AT M.L.L.W.

SOUNDINGS ARE BASED ON THE TIDE GAUGE LOCATED AT SAN QUENTIN PRISON PARKING LOT & BERTH 1 AT LARKSPUR LANDING FERRY TERMINAL.

VERTICAL CONTROL
BENCHMARK '4874C' 1977 USC&GS DISK ELEV. 11.55 FT MLLW.
BENCHMARK '06' 1936 USC&GS DISK ELEV. 34.92 FT MLLW.

HORIZONTAL CONTROL
COAST GUARD D-BEACON

US Army Corps of Engineers
San Francisco District
1455 Market Street
San Francisco, CA 94103

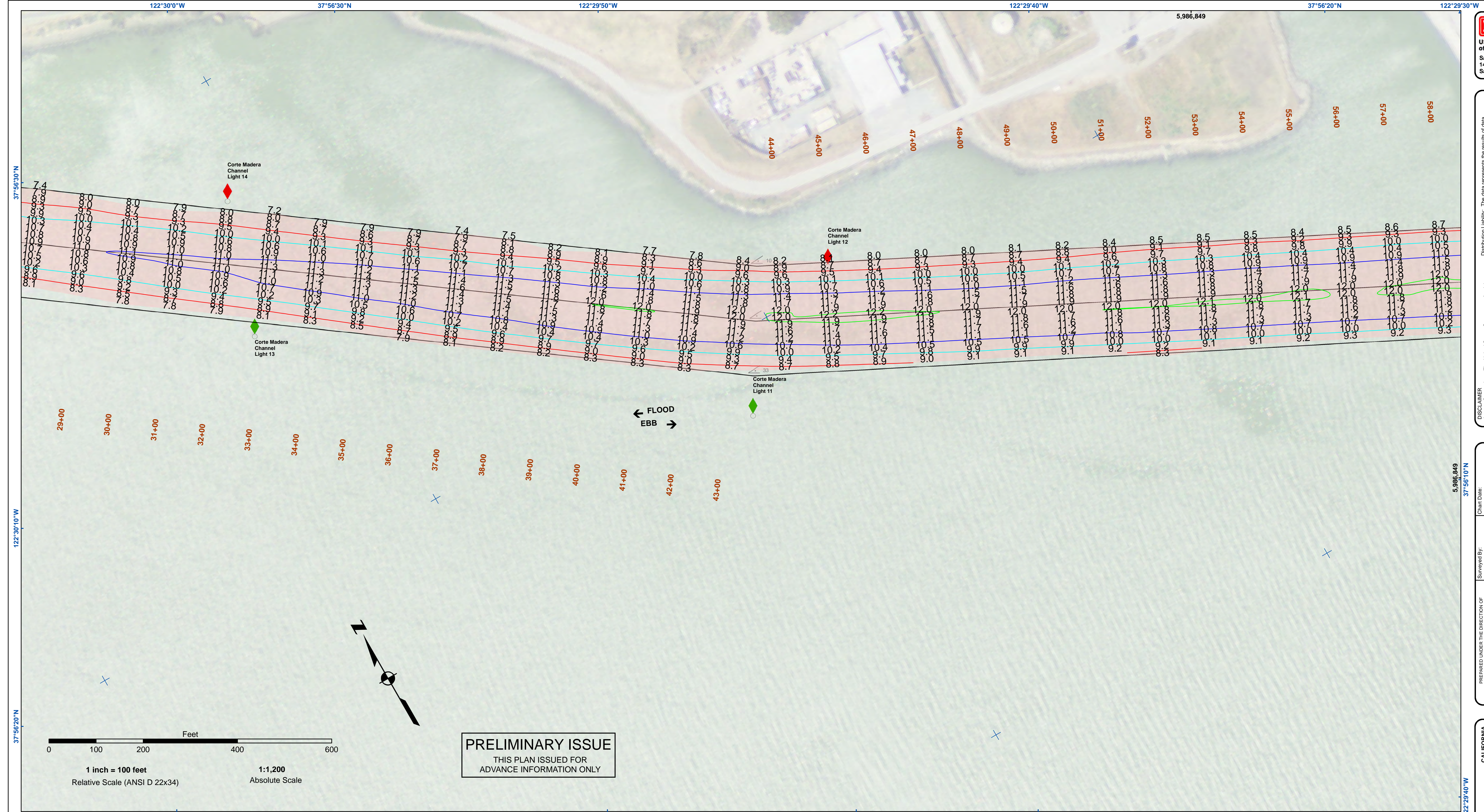
DISCLAIMER: The United States Government furnishes these data as they are received and does not warrant, express or implied, the accuracy, completeness, or reliability of the data. The user is responsible for the results of any application of the data for other than its intended purpose.

Access Constraints: The United States Government furnishes these data as they are received and does not warrant, express or implied, the accuracy, completeness, or reliability of the data. The user is responsible for the results of any application of the data for other than its intended purpose.

Prepared Under the Direction of JOHN D. CUNNINGHAM LT COLONEL, C.E., DISTRICT ENGINEER	Chart Date: Apr 10, 2020
Subject: Hydro Survey, Team Leader	Designed by: PDT
Recommended by: Chief, Hydro Survey, Section	Drawn by: PDT
Approved by: Chief, Construction Branch	

CALIFORNIA
MARIN COUNTY
LARKSPUR FERRY TERMINAL
CONDITION SURVEY
08 APRIL 2020

Sheet Reference Number
1 of 5



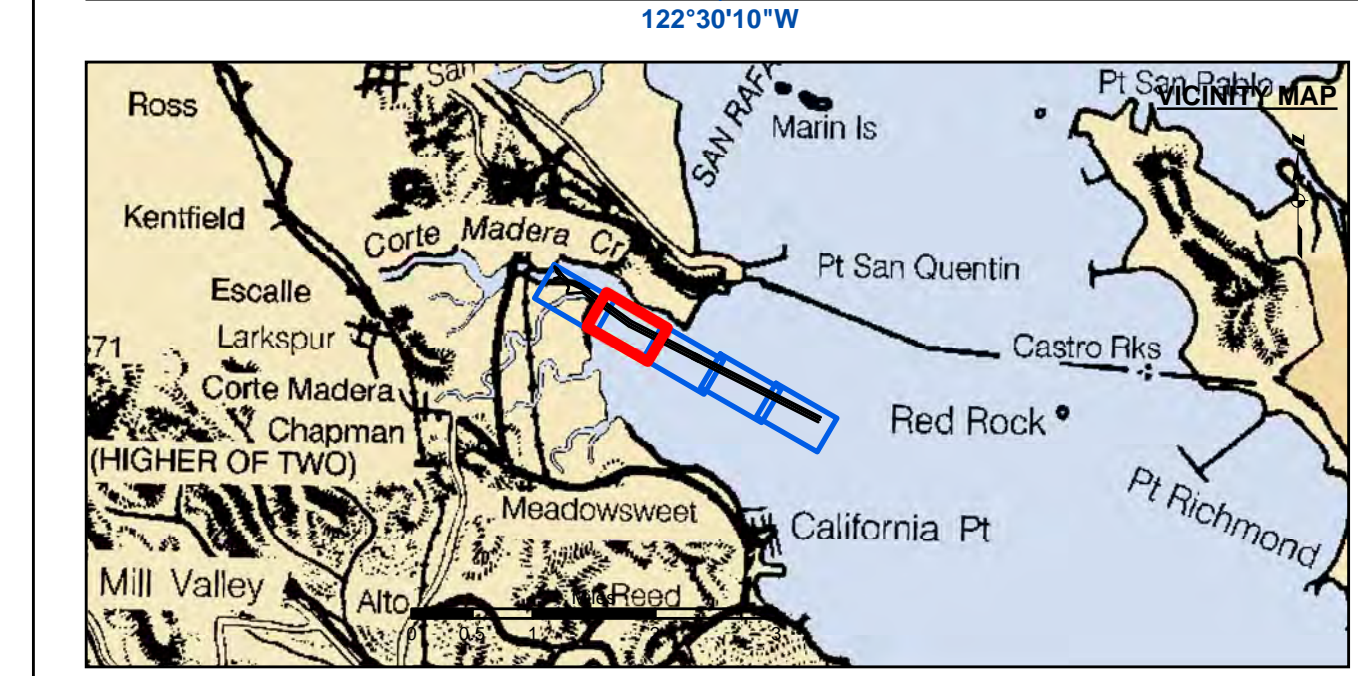
US Army Corps of Engineers
 San Francisco District
 1455 Market Street
 San Francisco, CA 94103

DISCLAIMER
 The United States Government furnishes this information as a service to the public and does not warrant, express or implied, the accuracy, completeness, or reliability of the information. The user is responsible for the results of any application of the data for other than its intended purpose. The data represents the results of data collection/processing for a specific US Army Corps of Engineers activity and indicates the general existing conditions. The user is responsible for the results of any application of the data for other than its intended purpose.

Prepared Under the Direction of JOHN D. CUNNINGHAM LT COLONEL, C.E. DISTRICT ENGINEER	Chart Date: Apr 10, 2020
Submitted by: Hydro Survey Team Leader	Designed by: PDT
Recommended by: Chief, Hydro Survey Section	Plotted by: PDT
Approved by: Chief, Construction Branch	Checked by: PDT
	Drawn by: PDT

CALIFORNIA
 MARIN COUNTY
LARKSPUR FERRY TERMINAL
 CONDITION SURVEY
 08 APRIL 2020

Sheet Reference Number
 2 of 5



Federal Navigation Channel	Beacon, General	Contours
Shoaling Area	Obstruction Point	
Placement Area	Navigation Buoy	
Anchorage Area	Navigation Buoy	
Wreck Area	Shoalest Sounding*	
Submerged Wreck		-13
Angle Point		-12
		-11
		-10
		-9

NOTES:
 DRAWING NOT TO BE USED FOR NAVIGATION. ONLY CHANNEL CONDITION AT DATE OF SURVEY.
 THE LOCATION OF ALL NAVIGATION AIDS ARE BASED ON INFORMATION PROVIDED BY THE U.S. COAST GUARD. BUOY LOCATIONS REPRESENT THE POSITION OF THE SINKER ONLY.
 SURVEYED BY THE CORPS OF ENGINEERS.
 SOUNDINGS WERE TAKEN BY FATHOMETER AND ARE SHOWN TO THE NEAREST TENTH OF A FOOT.
 SOUNDINGS ARE BASED ON THE DATUM OF MEAN LOWER LOW WATER AT THE LOCALITY.

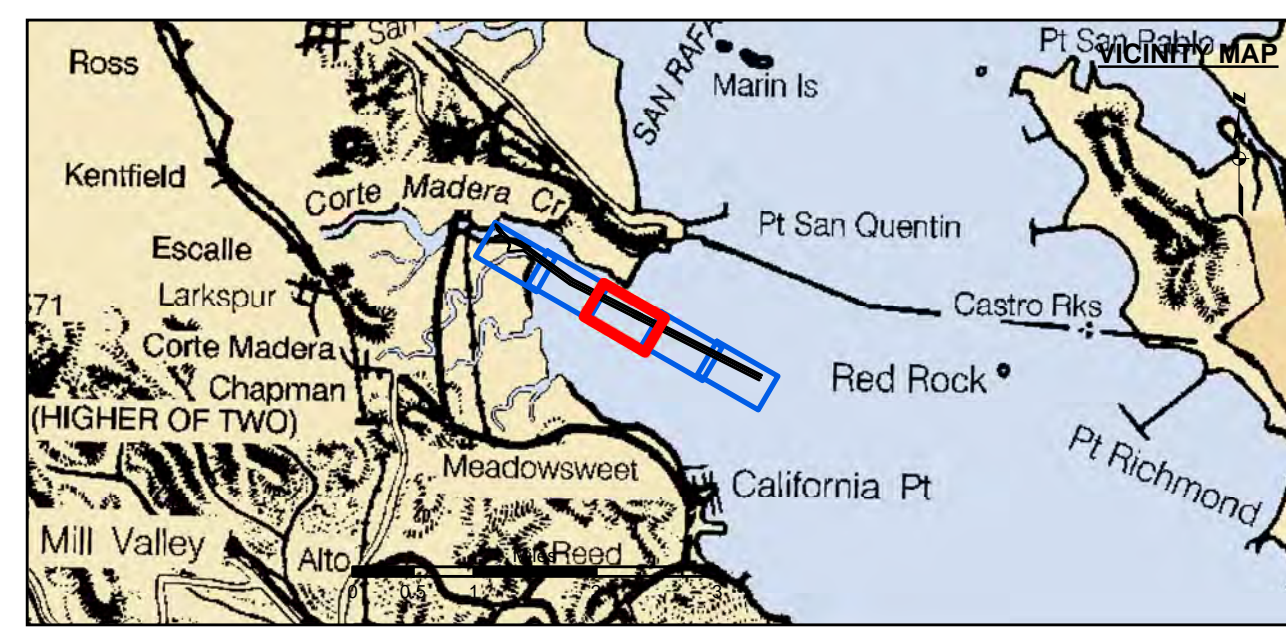
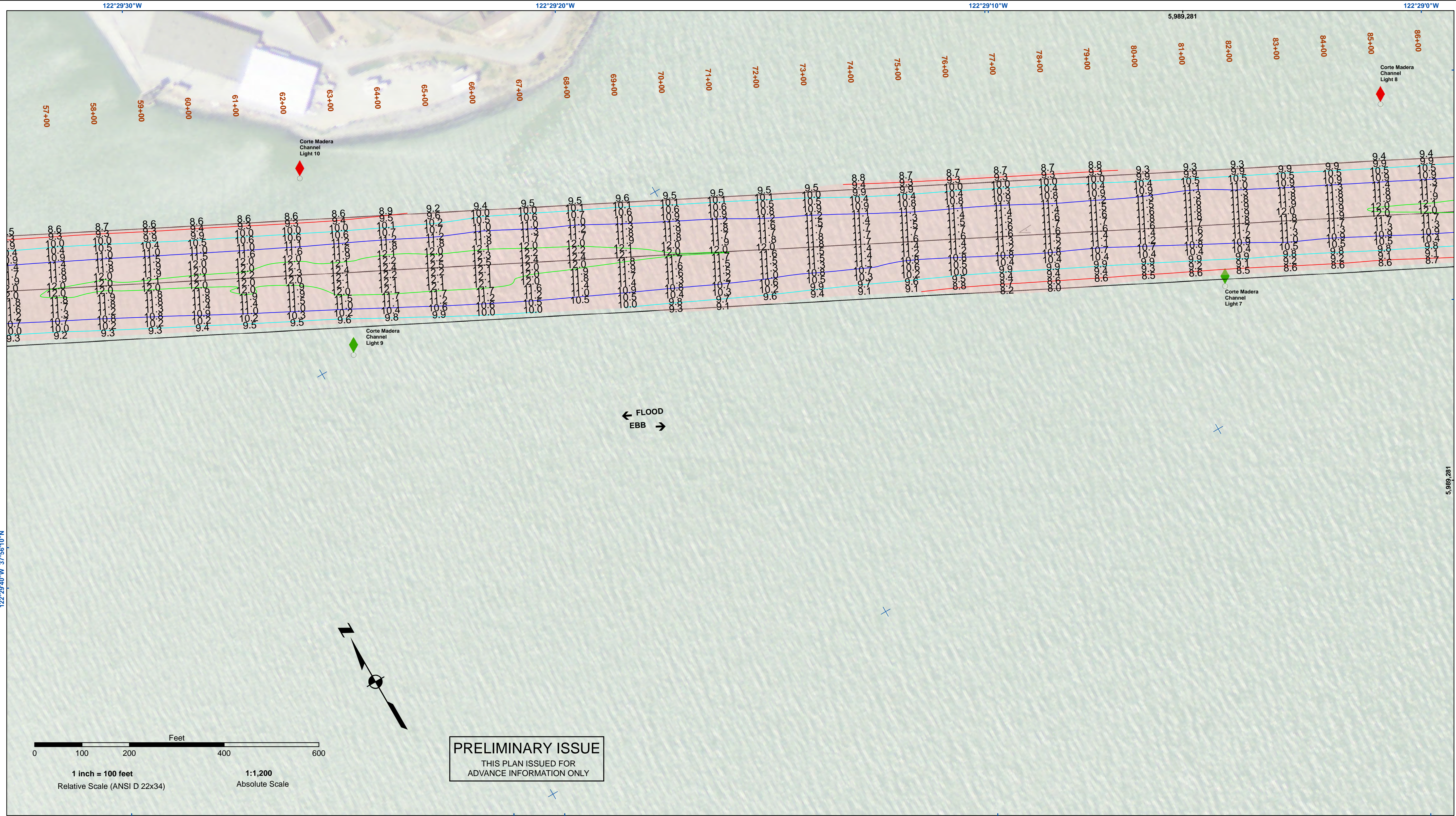
PLANE GRID AND COORDINATES ARE BASED ON THE STATE OF CALIFORNIA COORDINATE SYSTEM, LAMBERT CONFORMAL PROJECTION, ZONE III NAD 83, CALIFORNIA, AS DESCRIBED IN SPECIAL PUBLICATION NO. 235, PUBLISHED BY NATIONAL OCEAN SURVEY.

PROJECT DEPTH:
 TURNING BASIN -15 FT. AT M.L.L.W.
 MAIN CHANNEL -13 FT. AT M.L.L.W.

SOUNDINGS ARE BASED ON THE TIDE GAUGE LOCATED AT SAN QUENTIN PRISON PARKING LOT & BERTH 1 AT LARKSPUR LANDING FERRY TERMINAL.

VERTICAL CONTROL
 BENCHMARK '4874C' 1977 USC&GS DISK ELEV. 11.55 FT MLLW.
 BENCHMARK '06' 1936 USC&GS DISK ELEV. 34.92 FT MLLW.

HORIZONTAL CONTROL
 COAST GUARD D-BEACON



	Federal Navigation Channel		Beacon, General	Contours	
	Shoaling Area		Obstruction Point		
	Placement Area		Navigation Buoy		
	Anchorage Area		Navigation Buoy		
	Wreck Area		Shoalest Sounding*		
	Submerged Wreck				-13
	Angle Point				-12
					-11
					-10
					-9

NOTES:
 DRAWING NOT TO BE USED FOR NAVIGATION. ONLY CHANNEL CONDITION AT DATE OF SURVEY.
 THE LOCATION OF ALL NAVIGATION AIDS ARE BASED ON INFORMATION PROVIDED BY THE U.S. COAST GUARD. BUOY LOCATIONS REPRESENT THE POSITION OF THE SINKER ONLY.
 SURVEYED BY THE CORPS OF ENGINEERS.
 SOUNDINGS WERE TAKEN BY FATHOMETER AND ARE SHOWN TO THE NEAREST TENTH OF A FOOT.
 SOUNDINGS ARE BASED ON THE DATUM OF MEAN LOWER LOW WATER AT THE LOCALITY.

PLANE GRID AND COORDINATES ARE BASED ON THE STATE OF CALIFORNIA COORDINATE SYSTEM, LAMBERT CONFORMAL PROJECTION, ZONE III NAD 83, CALIFORNIA, AS DESCRIBED IN SPECIAL PUBLICATION NO. 235, PUBLISHED BY NATIONAL OCEAN SURVEY.

PROJECT DEPTH:
 TURNING BASIN -15 FT. AT M.L.L.W.
 MAIN CHANNEL -13 FT. AT M.L.L.W.

SOUNDINGS ARE BASED ON THE TIDE GAUGE LOCATED AT SAN QUENTIN PRISON PARKING LOT & BERTH 1 AT LARKSPUR LANDING FERRY TERMINAL.

VERTICAL CONTROL
 BENCHMARK '4874C' 1977 USC&GS DISK ELEV. 11.55 FT MLLW.
 BENCHMARK '06' 1936 USC&GS DISK ELEV. 34.92 FT MLLW.

HORIZONTAL CONTROL
 COAST GUARD D-BEACON



DISCLAIMER: The United States Government furnishes access to this information for the purpose of providing information and the data furnished. The United States shall be under no liability whatsoever to any person by reason of any use made thereof. These data belong to the Government. Therefore the recipient may not transfer these data to others without also transferring this Disclaimer.

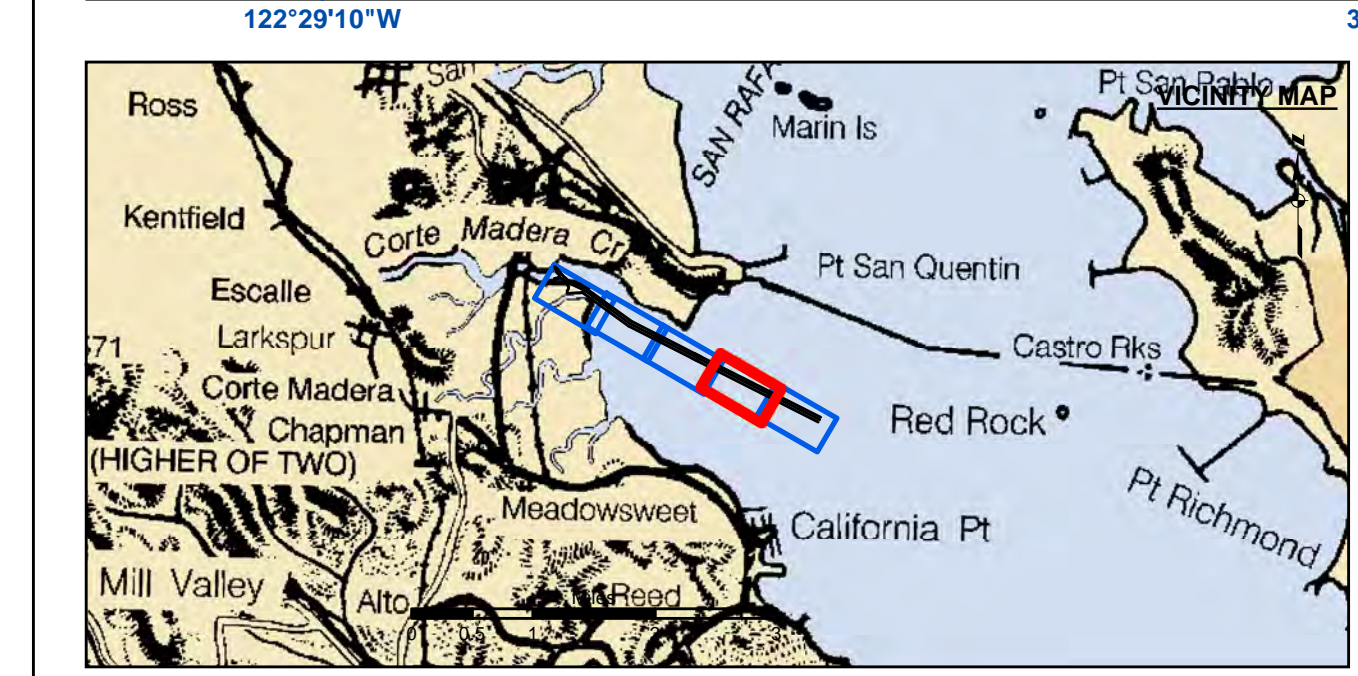
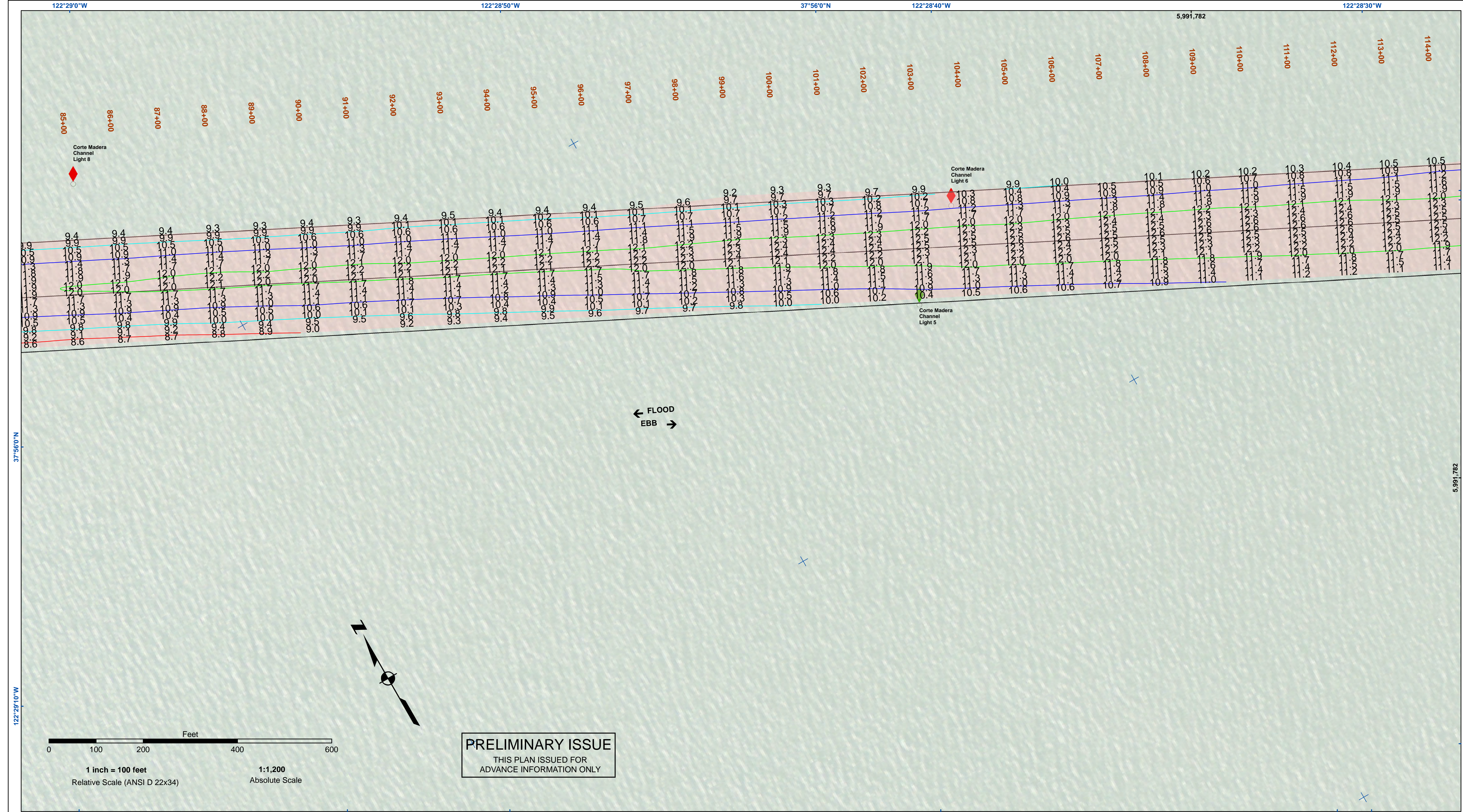
Access Constraints: The United States Government furnishes access to this information for the purpose of providing information and the data furnished. The United States shall be under no liability whatsoever to any person by reason of any use made thereof. These data belong to the Government. Therefore the recipient may not transfer these data to others without also transferring this Disclaimer.

Distribution Liability: The data represents the results of data collection/processing for a specific US Army Corps of Engineers activity and indicates the general existing conditions. Engineers activity and indicates the general existing conditions. The user is responsible for the results of any of the application of the data for other than its intended purpose.

PREPARED UNDER THE DIRECTION OF JOHN D. CUNNINGHAM LT COLONEL, C.E., DISTRICT ENGINEER	Surveyed By:	Chart Date:
Subject: Hydro Survey, Team Leader	Plotted By: PDT	Apr 10, 2020
Recommendation: Chief, Hydro Survey Section	Checked By: PDT	Designed by:
Approved: Chief, Construction Branch	Drawn by: PDT	

CALIFORNIA
 MARIN COUNTY
LARKSPUR FERRY TERMINAL
 CONDITION SURVEY
 08 APRIL 2020

Sheet Reference Number
3 of 5



	Federal Navigation Channel		Beacon, General	Contours	
	Shoaling Area		Obstruction Point		
	Placement Area		Navigation Buoy		
	Anchorage Area		Navigation Buoy		
	Wreck Area		Shoalest Sounding*		
	Submerged Wreck		-13		-12
	Angle Point		-11		-10
			-9		

NOTES:
 DRAWING NOT TO BE USED FOR NAVIGATION. ONLY CHANNEL CONDITION AT DATE OF SURVEY.
 THE LOCATION OF ALL NAVIGATION AIDS ARE BASED ON INFORMATION PROVIDED BY THE U.S. COAST GUARD. BUOY LOCATIONS REPRESENT THE POSITION OF THE SINKER ONLY.
 SURVEYED BY THE CORPS OF ENGINEERS.
 SOUNDINGS WERE TAKEN BY FATHOMETER AND ARE SHOWN TO THE NEAREST TENTH OF A FOOT.
 SOUNDINGS ARE BASED ON THE DATUM OF MEAN LOWER LOW WATER AT THE LOCALITY.

PLANE GRID AND COORDINATES ARE BASED ON THE STATE OF CALIFORNIA COORDINATE SYSTEM, LAMBERT CONFORMAL PROJECTION, ZONE III NAD 83, CALIFORNIA, AS DESCRIBED IN SPECIAL PUBLICATION NO. 235, PUBLISHED BY NATIONAL OCEAN SURVEY.

PROJECT DEPTH:
 TURNING BASIN -15 FT. AT M.L.L.W.
 MAIN CHANNEL -13 FT. AT M.L.L.W.

SOUNDINGS ARE BASED ON THE TIDE GAUGE LOCATED AT SAN QUENTIN PRISON PARKING LOT & BERTH 1 AT LARKSPUR LANDING FERRY TERMINAL.

VERTICAL CONTROL:
 BENCHMARK '4874C' 1977 USC&GS DISK ELEV. 11.55 FT MLLW.
 BENCHMARK '06' 1936 USC&GS DISK ELEV. 34.92 FT MLLW.

HORIZONTAL CONTROL:
 COAST GUARD D-BEACON



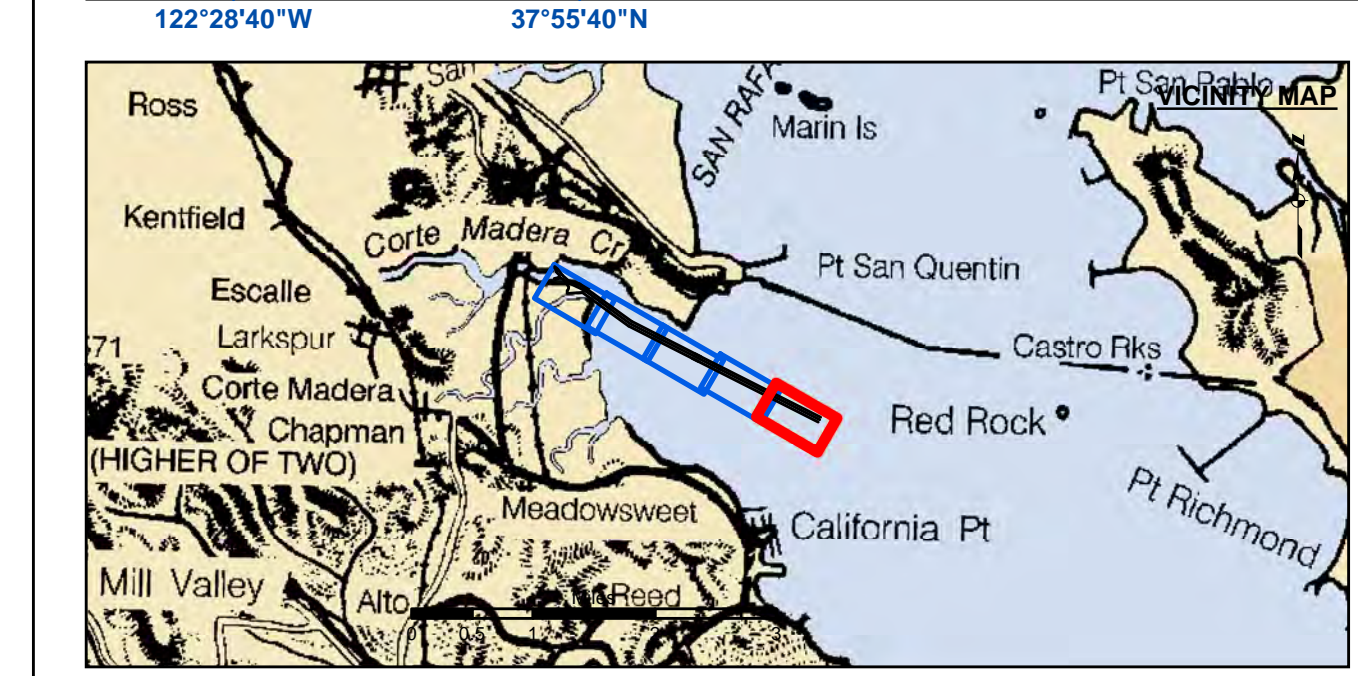
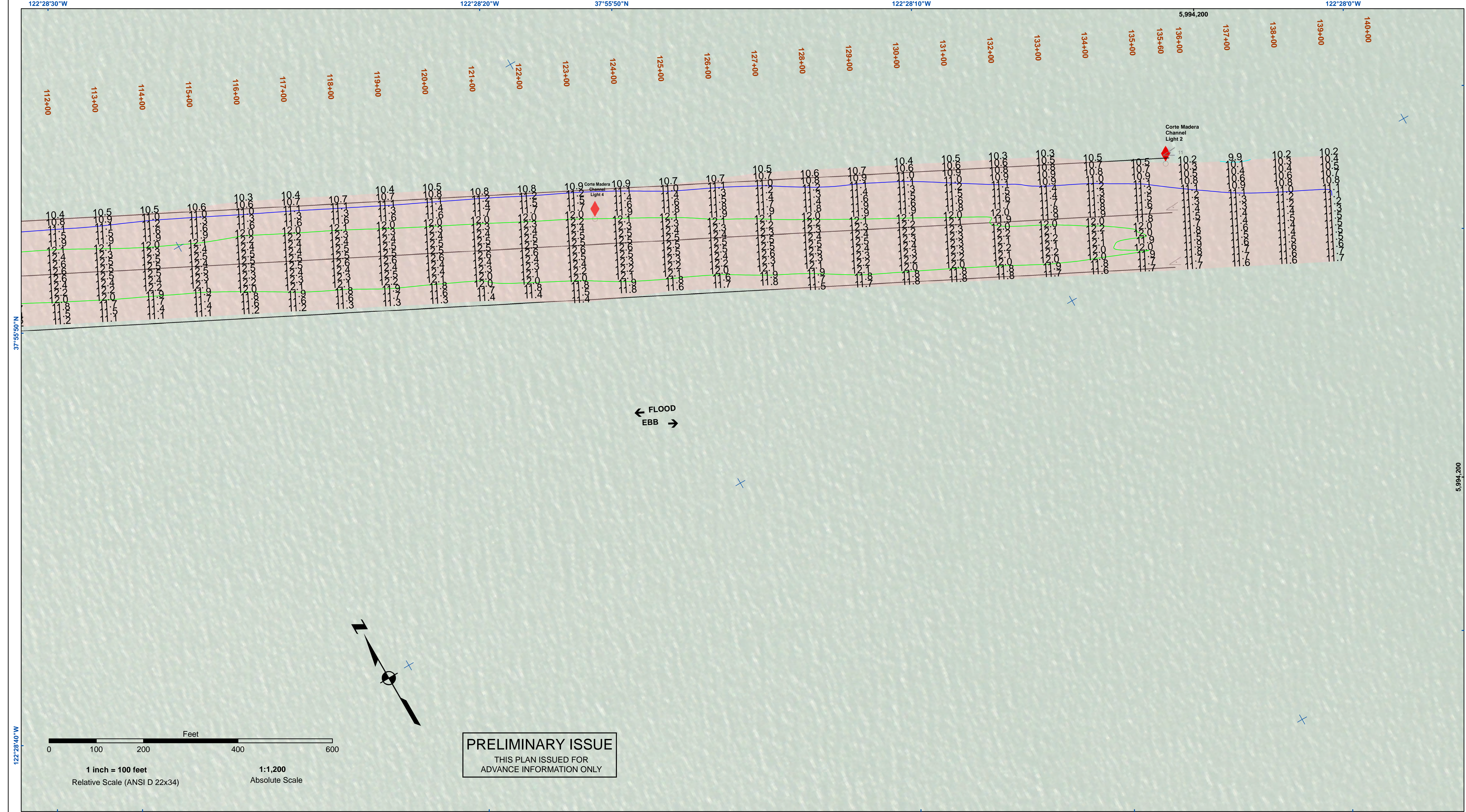
DISCLAIMER: The data represents the results of data collection/processing for a specific US Army Corps of Engineers activity and indicates the general existing conditions. Engineers activity and indicates the general existing conditions. The user is responsible for the results of any of the application of the data for other than its intended purpose.

Access Constraints: The United States Government furnishes this information for the user's information only. The United States shall be under no liability whatsoever to any person by reason of any use made thereof. These data belong to the Government. Therefore the recipient may not transfer these data to others without also transferring this Disclaimer.

PREPARED UNDER THE DIRECTION OF JOHN D. CUNNINGHAM LT COLONEL, C.E. DISTRICT ENGINEER	Surveyed By:	Chart Date:
Submitted: Hydro Survey Team Leader	Plotted By: PDT	Apr 10, 2020
Recommended: Chief, Hydro Survey Section	Checked By: PDT	Designed by:
Approved: Chief, Construction Branch	Drawn by: PDT	Drawn by: PDT

CALIFORNIA
 MARIN COUNTY
LARKSPUR FERRY TERMINAL
 CONDITION SURVEY
 08 APRIL 2020

Sheet Reference Number
4 of 5



	Federal Navigation Channel		Beacon, General	Contours
	Shoaling Area		Obstruction Point	
	Placement Area		Navigation Buoy	
	Anchorage Area		Navigation Buoy	
	Wreck Area		Shoalest Sounding*	
	Submerged Wreck		-13	
	Angle Point		-12	
			-11	
			-10	
			-9	

NOTES:
 DRAWING NOT TO BE USED FOR NAVIGATION. ONLY CHANNEL CONDITION AT DATE OF SURVEY.
 THE LOCATION OF ALL NAVIGATION AIDS ARE BASED ON INFORMATION PROVIDED BY THE U.S. COAST GUARD. BUOY LOCATIONS REPRESENT THE POSITION OF THE SINKER ONLY.
 SURVEYED BY THE CORPS OF ENGINEERS.
 SOUNDINGS WERE TAKEN BY FATHOMETER AND ARE SHOWN TO THE NEAREST TENTH OF A FOOT.
 SOUNDINGS ARE BASED ON THE DATUM OF MEAN LOWER LOW WATER AT THE LOCALITY.

PLANE GRID AND COORDINATES ARE BASED ON THE STATE OF CALIFORNIA COORDINATE SYSTEM, LAMBERT CONFORMAL PROJECTION, ZONE III NAD 83, CALIFORNIA, AS DESCRIBED IN SPECIAL PUBLICATION NO. 235, PUBLISHED BY NATIONAL OCEAN SURVEY.

PROJECT DEPTH:
 TURNING BASIN -15 FT. AT M.L.L.W.
 MAIN CHANNEL -13 FT. AT M.L.L.W.

SOUNDINGS ARE BASED ON THE TIDE GAUGE LOCATED AT SAN QUENTIN PRISON PARKING LOT & BERTH 1 AT LARKSPUR LANDING FERRY TERMINAL.

VERTICAL CONTROL
 BENCHMARK '4874C' 1977 USC&GS DISK ELEV. 11.55 FT MLLW.
 BENCHMARK '06' 1936 USC&GS DISK ELEV. 34.92 FT MLLW.

HORIZONTAL CONTROL
 COAST GUARD D-BEACON

US Army Corps of Engineers
 San Francisco District
 1455 Market Street
 San Francisco, CA 94103

DISCLAIMER: The United States Government Lend-Lease program provides for the use of the data represented by this chart for the purpose of navigation. The data represented by this chart are the result of data collected by the United States Coast and Geodetic Survey. The data are not intended for use in any other application of the data for other than its intended purpose. The user is responsible for the results of any application of the data for other than its intended purpose.

Access Constraints: The United States Government Lend-Lease program provides for the use of the data represented by this chart for the purpose of navigation. The data are not intended for use in any other application of the data for other than its intended purpose. The user is responsible for the results of any application of the data for other than its intended purpose.

Prepared Under the Direction of JOHN D. CUNNINGHAM LT COLONEL, C.E. DISTRICT ENGINEER	Surveyed By: PDT	Chart Date: Apr 10, 2020
Submitted: Hydro Survey Team Leader	Plotted By: PDT	Designed by: PDT
Recommended: Chief, Hydro Survey Section	Checked By: PDT	Drawn by: PDT
Approved: Chief, Construction Branch		

CALIFORNIA
 MARIN COUNTY
LARKSPUR FERRY TERMINAL
 CONDITION SURVEY
 08 APRIL 2020

Sheet Reference Number
5 of 5