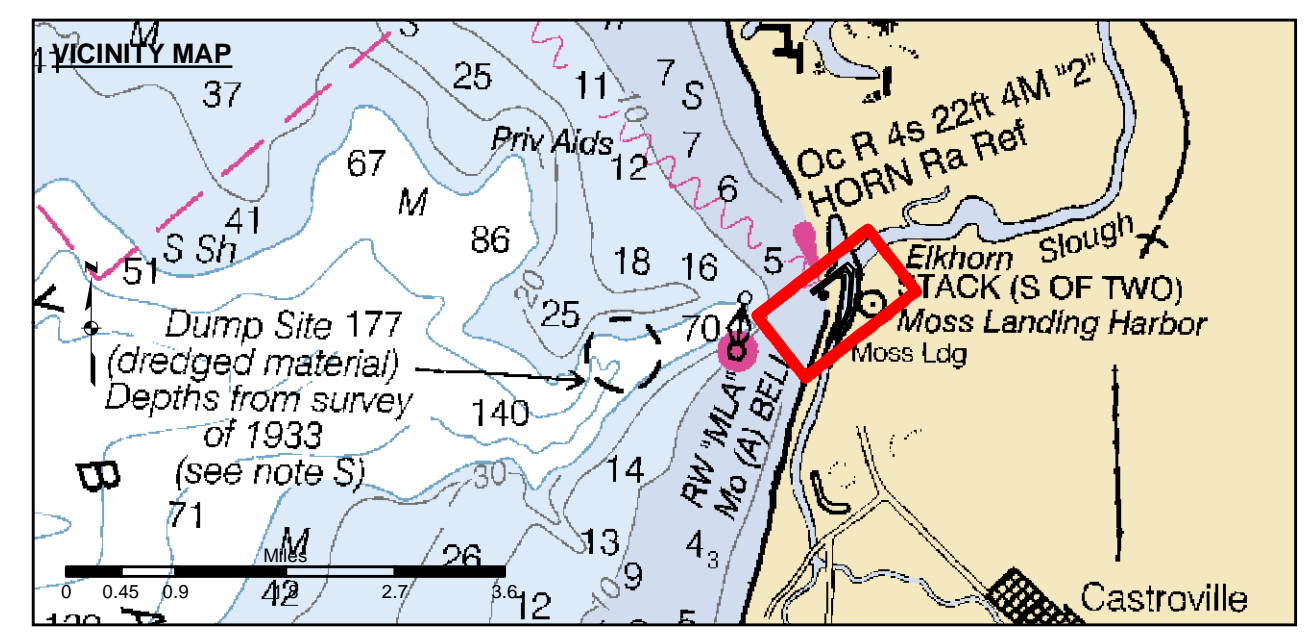
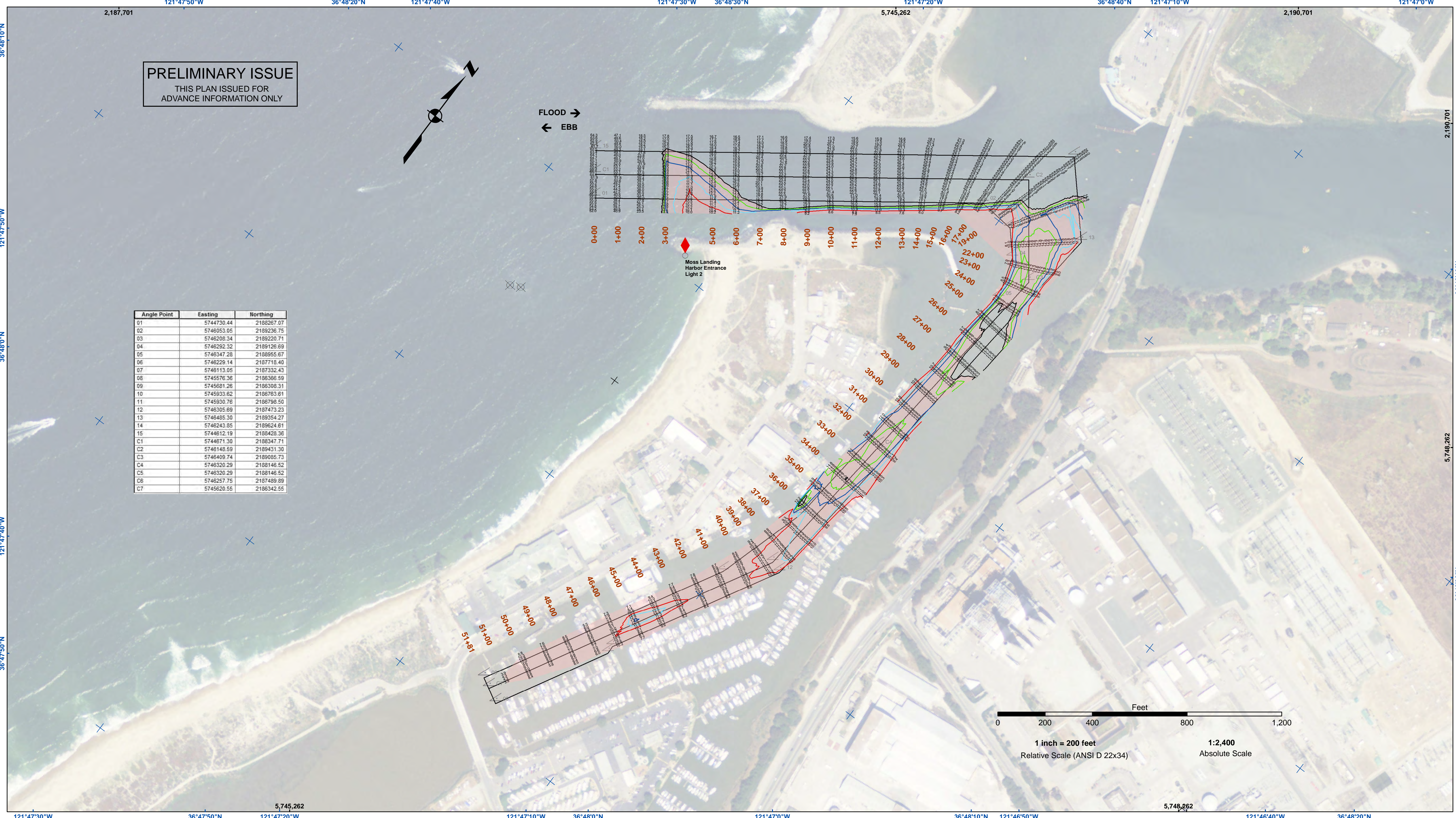


PRELIMINARY ISSUE
THIS PLAN ISSUED FOR
ADVANCE INFORMATION ONLY



FLOOD →
← EBB

Angle Point	Easting	Northing
01	5744730.44	2188267.07
02	5746053.05	2189236.75
03	5746208.34	2189220.71
04	5746292.32	2189126.69
05	5746347.28	2188955.67
06	5746229.14	2187718.40
07	5746113.05	2187332.43
08	5745576.36	2186306.59
09	5745581.26	2186306.31
10	5745933.62	2186763.61
11	5745930.76	2186798.50
12	5746305.69	2187473.23
13	5746485.30	2189354.27
14	5746243.85	2189624.61
15	5744612.19	2188428.36
C1	5744671.30	2188347.71
C2	5746148.59	2189431.30
C3	5746409.74	2189085.73
C4	5746320.29	2188146.52
C5	5746320.29	2188146.52
C6	5746257.75	2187489.89
C7	5745620.55	2186342.55



Federal Navigation Channel	Beacon, General	Contours
Shoaling Area	Obstruction Point	
Placement Area	Navigation Buoy	
Anchorage Area	Navigation Buoy	
Wreck Area	Shoalest Sounding*	
Submerged Wreck		-15
Angle Point		-14
		-13
		-12
		-11

NOTES:
DRAWING NOT TO BE USED FOR NAVIGATION. ONLY CHANNEL CONDITION AT DATE OF SURVEY.
THE LOCATION OF ALL NAVIGATION AIDS ARE BASED ON INFORMATION PROVIDED BY THE U.S. COAST GUARD. BUOY LOCATIONS REPRESENT THE POSITION OF THE SINKER ONLY.
INFORMATION DEPICTED ON THIS MAP REPRESENTS THE RESULTS OF SURVEYS MADE ON THE DATES INDICATED AND CAN ONLY BE CONSIDERED AS INDICATING THE GENERAL CONDITIONS AT THAT TIME.
SURVEYED BY THE CORPS OF ENGINEERS.
*SHOALEST SOUNDING PER QUARTER PER REACH

SOUNDINGS WERE TAKEN BY FATHOMETER AND ARE SHOWN TO THE NEAREST TENTH OF A FOOT. SOUNDINGS ARE BASED ON THE DATUM OF MEAN LOWER LOW WATER AT THE LOCALITY. BASE MAPS ARE USDA NAIP 2010.
PLANE GRID, BEARING AND COORDINATES ARE BASED ON THE STATE OF CALIFORNIA COORDINATE SYSTEM, LAMBERT CONFORMAL PROJECTION, ZONE IV NAD 83, CALIFORNIA, AS DESCRIBED IN SPECIAL PUBLICATION NO. 235, PUBLISHED BY NATIONAL OCEAN SURVEY.
THE PROJECT DEPTH IS 15 FEET AT M.L.L.W.
VERTICAL CONTROL:
BENCHMARK: MLLW ELEV.
BM 3623 A 1976 NOS DISK, 8.46 MLLW
PUBLICATION DATE: 10/2007
TIDE GAUGE LOCATION: OLD HWY 1 BRIDGE ABUTMENT
HORIZONTAL CONTROL:
DGPS BEACON.

US Army Corps of Engineers
San Francisco District
450 Golden Gate
San Francisco, CA 94102

DISCLAIMER: The United States Government furnishes this information for the general information of the recipient. The data represents the results of data collected by the United States Government. The data is not intended for use in any other manner than the intended purpose. The recipient shall be responsible for the results of any application of the data for other than the intended purpose. The recipient shall not be held liable for any damage or injury resulting from the use of this information. The recipient shall not be held liable for any damage or injury resulting from the use of this information. The recipient shall not be held liable for any damage or injury resulting from the use of this information.

Prepared Under the Direction of:	Chart Date:
TRAVIS J. RAYFIELD	Mar 28, 2019
LT Colonel, C.E., District Engineer	Designed by:
Subject: Hydro Survey Team Leader	PDT
Recommended: Chief, Hydro Survey Section	Checked by:
Approved: Chief, Construction Branch	PDT
Drawn by:	PDT

MONTEREY COUNTY
MOSS LANDING
CONDITION SURVEY
28 MARCH 2019

Sheet Reference Number
1 of 1