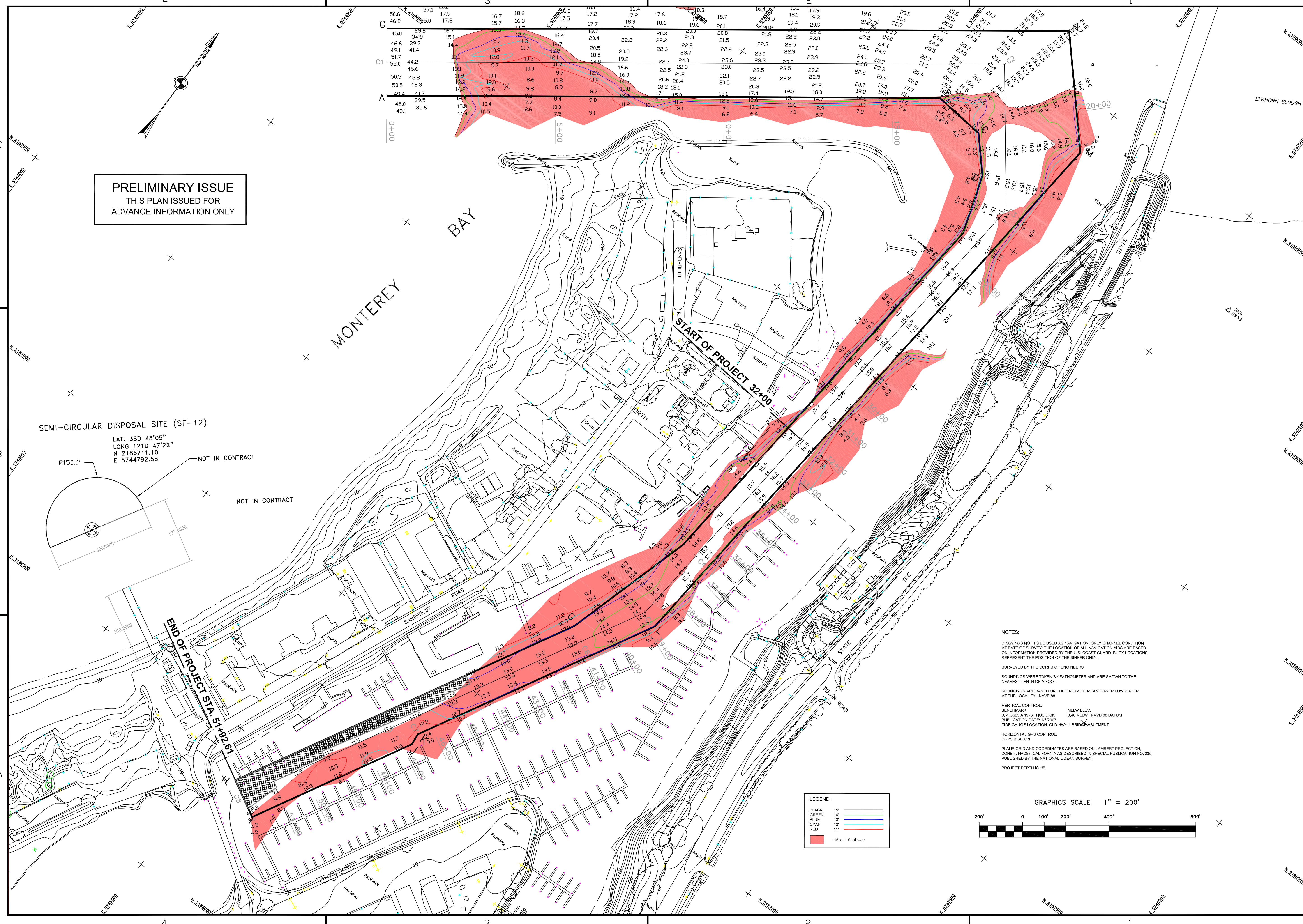


**PRELIMINARY ISSUE**  
THIS PLAN ISSUED FOR  
ADVANCE INFORMATION ONLY

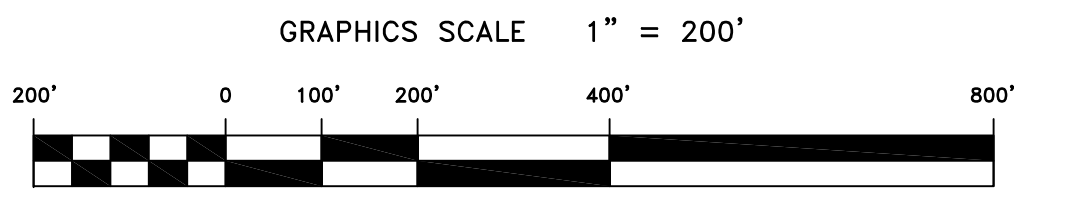
SEMI-CIRCULAR DISPOSAL SITE (SF-12)  
LAT. 38D 48'05"  
LONG 121D 47'22"  
N 2186711.10  
E 5744792.58  
NOT IN CONTRACT



**NOTES:**  
DRAWINGS NOT TO BE USED AS NAVIGATION. ONLY CHANNEL CONDITION AT DATE OF SURVEY. THE LOCATION OF ALL NAVIGATION AIDS ARE BASED ON INFORMATION PROVIDED BY THE U.S. COAST GUARD. BUOY LOCATIONS REPRESENT THE POSITION OF THE SINKER ONLY.  
SURVEYED BY THE CORPS OF ENGINEERS.  
SOUNDINGS WERE TAKEN BY FATHOMETER AND ARE SHOWN TO THE NEAREST TENTH OF A FOOT.  
SOUNDINGS ARE BASED ON THE DATUM OF MEAN LOWER LOW WATER AT THE LOCALITY. NAVD 88  
VERTICAL CONTROL:  
BENCHMARK: B.M. 3623 A 1976 NOS DISK 8.46 MLLW NAVD 88 DATUM  
PUBLICATION DATE: 1/16/2007  
TIDE GAUGE LOCATION: OLD HWY 1 BRIDGE ABUTMENT  
HORIZONTAL GPS CONTROL:  
DGPS BEACON  
PLANE GRID AND COORDINATES ARE BASED ON LAMBERT PROJECTION, ZONE 4, NAD83, CALIFORNIA AS DESCRIBED IN SPECIAL PUBLICATION NO. 235, PUBLISHED BY THE NATIONAL OCEAN SURVEY.  
PROJECT DEPTH IS 15'

**LEGEND:**

BLACK	15'
GREEN	14'
BLUE	13'
CYAN	12'
RED	11'
Red	-15' and Shallower



Mark	Description	Date	Appr.

<b>SUBMITTED:</b>	PDT	<b>DESIGNED BY:</b>	PDT	<b>CHECKED BY:</b>	PDT	<b>DRAWN BY:</b>	PDT	
Hydro Survey Team Leader								
<b>APPROVAL RECOMMENDED:</b>		<b>DATE:</b>	06/14/2012	<b>SHEET NO.:</b>	1 OF 1	<b>DRAWING NO.:</b>	14 2	
Chief, Geomatics Section		<b>PREPARED UNDER THE DIRECTION OF</b>					XXX	
APPROVED:		<b>TORREY A. DICIRO</b>						
Chief, Construction Branch		<b>LT. COLONEL, C.E., DISTRICT ENGINEER</b>						

CALIFORNIA  
MONTEREY COUNTY  
**MOSSLANDING  
CONDITION SURVEY  
11-13 JUNE 2012**

Sheet reference number  
**C1**