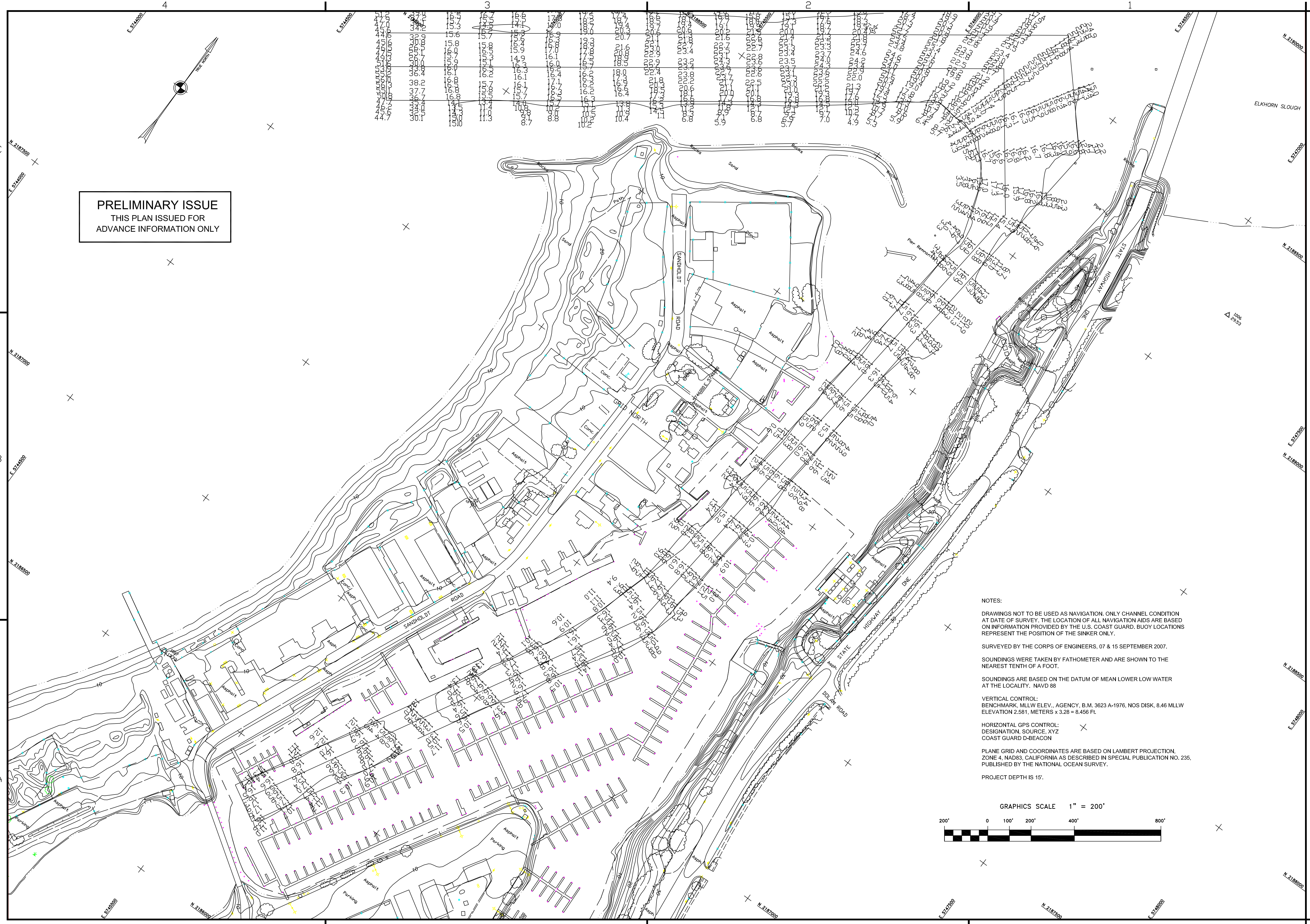



Mark	Description	Date	Appr.

SUBMITTED BY: MC Hydro Survey Team Leader	DESIGNED BY:	DRAWN BY:
	MC	TVW
APPROVAL RECOMMENDED: Chief, Technical Support Section	CHECKED BY:	DRAWING NO.
	TVW	14
APPROVED: Chief, Construction Branch	DATE:	1 OF 1
	09/17/2007	2
PREPARED UNDER THE DIRECTION OF CRAIG W. KILEY		7/9
		LT. COLONEL C.E., DISTRICT ENGINEER

CALIFORNIA  
MONTEREY COUNTY  
MOSSLANDING  
POSTDREDGE SURVEY  
07 & 15 SEPTEMBER 2007

Sheet reference number  
C1



**PRELIMINARY ISSUE**  
THIS PLAN ISSUED FOR  
ADVANCE INFORMATION ONLY

NOTES:

DRAWINGS NOT TO BE USED AS NAVIGATION. ONLY CHANNEL CONDITION AT DATE OF SURVEY. THE LOCATION OF ALL NAVIGATION AIDS ARE BASED ON INFORMATION PROVIDED BY THE U.S. COAST GUARD. BUOY LOCATIONS REPRESENT THE POSITION OF THE SINKER ONLY.

SURVEYED BY THE CORPS OF ENGINEERS, 07 & 15 SEPTEMBER 2007.

SOUNDINGS WERE TAKEN BY FATHOMETER AND ARE SHOWN TO THE NEAREST TENTH OF A FOOT.

SOUNDINGS ARE BASED ON THE DATUM OF MEAN LOWER LOW WATER AT THE LOCALITY. NAVD 88

VERTICAL CONTROL:  
BENCHMARK, MLLW ELEV., AGENCY, B.M. 3623 A-1976, NOS DISK, 8.46 MLLW ELEVATION 2.581, METERS x 3.28 = 8.456 FT.

HORIZONTAL GPS CONTROL:  
DESIGNATION SOURCE, XYZ  
COAST GUARD D-BEACON

PLANE GRID AND COORDINATES ARE BASED ON LAMBERT PROJECTION, ZONE 4, NAD83, CALIFORNIA AS DESCRIBED IN SPECIAL PUBLICATION NO. 235, PUBLISHED BY THE NATIONAL OCEAN SURVEY.

PROJECT DEPTH IS 15'.

