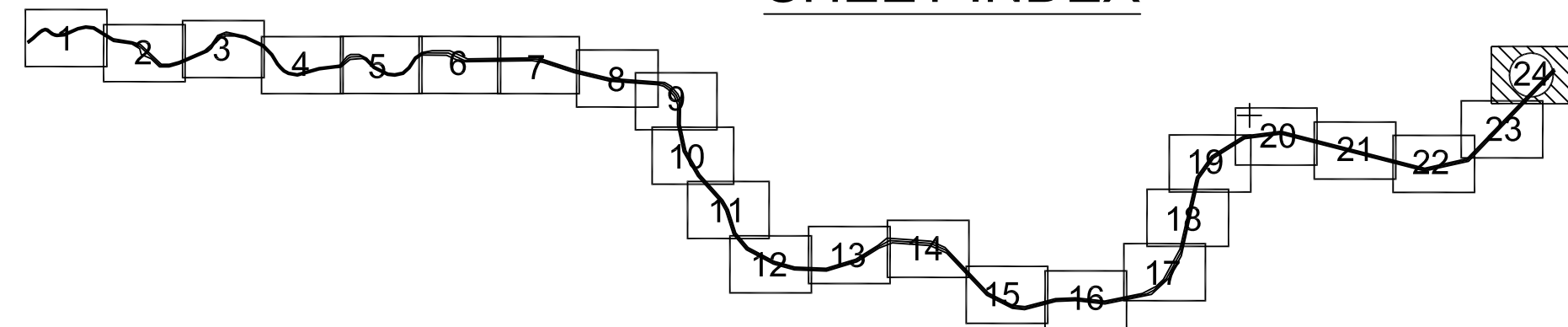
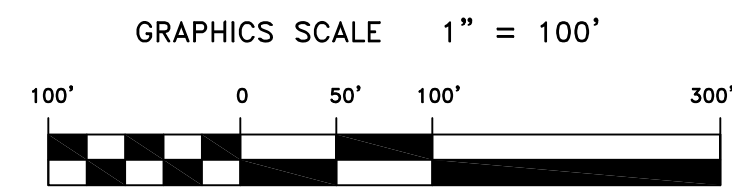


PRELIMINARY ISSUE  
THIS PLAN ISSUED FOR  
ADVANCE INFORMATION ONLY



SHEET INDEX



MATCHLINE - SHEET 23



US Army Corps  
of Engineers  
San Francisco District  
1455 Market Street  
San Francisco, CA 94103

Mark	Description	Date	Appr.

SUBMITTED:	DESIGNED BY:	CHECKED BY:			DRAWN BY:		
		PDT	DATE	SHEET NO.	PDT	DATE	SHEET NO.
Hydro Survey Team Leader	DATE: 02/23/2010	PDT	24	PDT	24	PDT	24
APPROVAL RECOMMENDED:	PREPARED UNDER THE DIRECTION OF						DRAWING NO. 50 2
Chief, Technical Support Section	LAURENCE M. FARRELL						
APPROVED:	LT. COLONEL, C.E., DISTRICT ENGINEER						
Chief, Construction Branch							

CALIFORNIA  
NAPA COUNTY  
NAPA RIVER  
CONDITION SURVEY  
26-28 JANUARY 2010  
AND  
10 FEBRUARY 2010

Sheet  
reference  
number  
C24