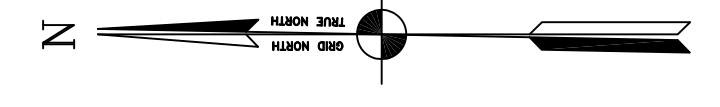
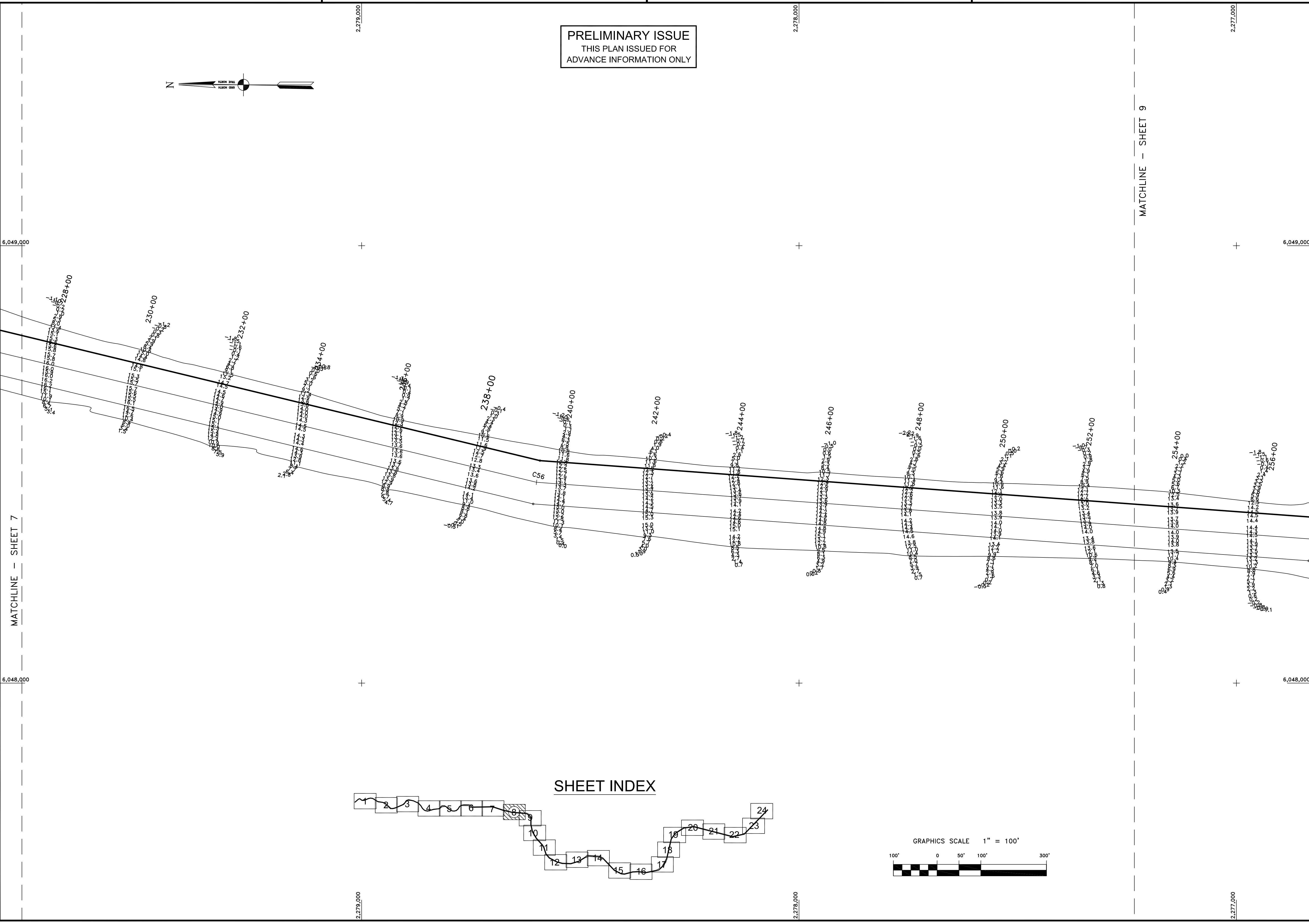


PRELIMINARY ISSUE
THIS PLAN ISSUED FOR
ADVANCE INFORMATION ONLY

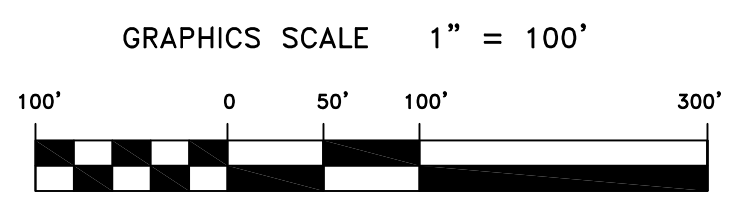
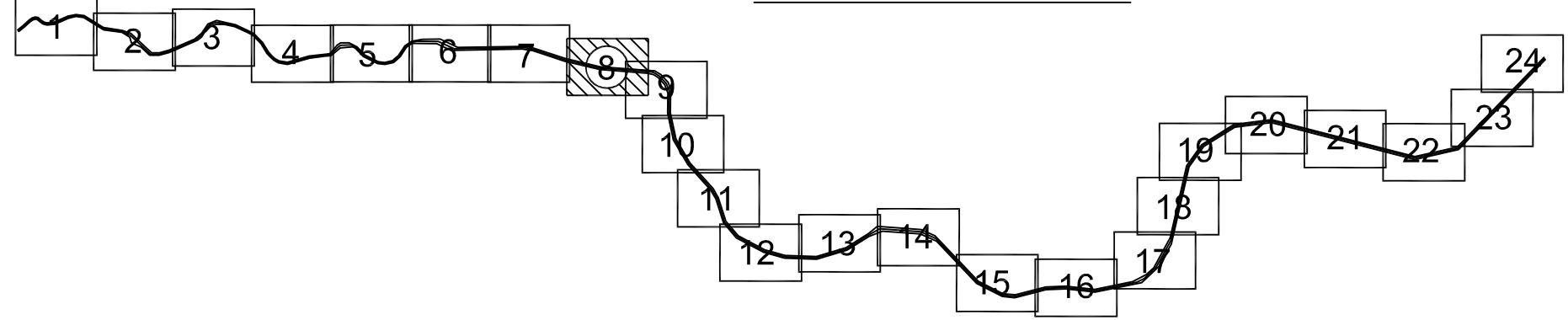


MATCHLINE - SHEET 7

MATCHLINE - SHEET 9



SHEET INDEX




US Army Corps
of Engineers
San Francisco District
1455 Market Street
San Francisco, CA 94103

Mark	Description	Date	Appr.

SUBMITTED: MC Hydro Survey Team Leader	DESIGNED BY:	CHECKED BY:	DRAWN BY:
	DATE:	DATE:	DATE:
APPROVAL RECOMMENDED:	SHEET NO.	T.V.W.	EWC
APPROVED:	8 OF 24	8 OF 24	2
CHIEF, Technical Support Section	6/13/2008	6/13/2008	2
CHIEF, Construction Branch	PREPARED UNDER THE DIRECTION OF CRAIG W. KILEY LT. COLONEL, C.E., DISTRICT ENGINEER		

CALIFORNIA
NAPA COUNTY
NAPA RIVER
CONDITION SURVEY
06, 9-11 JUNE 2008

Sheet reference number
C8