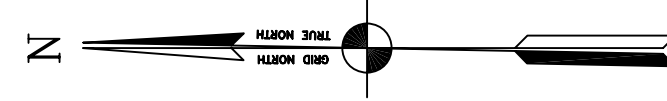
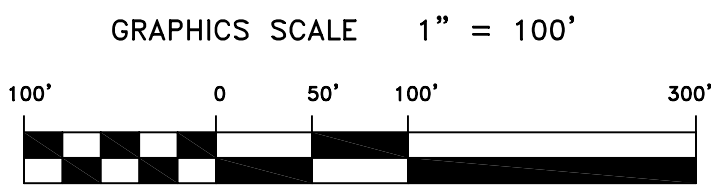
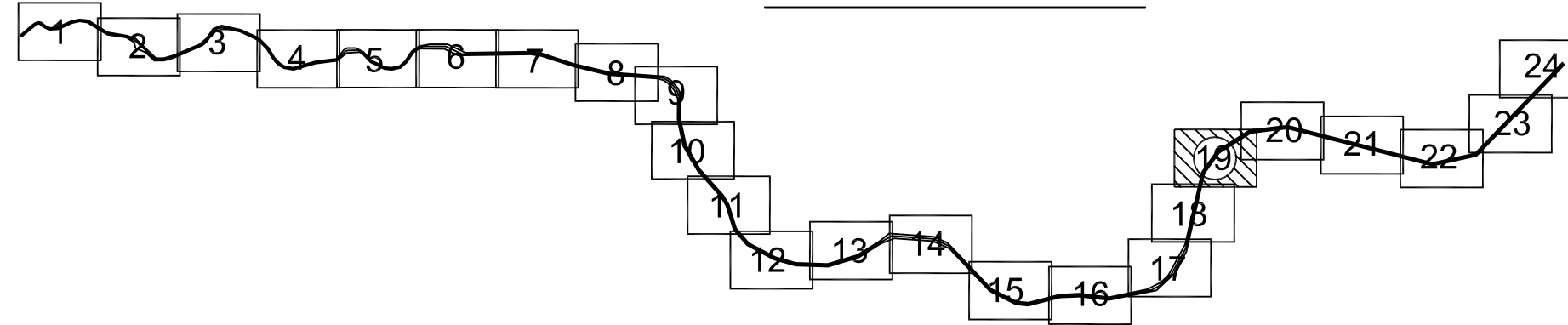


PRELIMINARY ISSUE
THIS PLAN ISSUED FOR
ADVANCE INFORMATION ONLY



SHEET INDEX



MATCHLINE - SHEET 18

MATCHLINE - SHEET 20

US Army Corps of Engineers
San Francisco District
333 Market Street
San Francisco, CA 94105

Mark	Description	Date	Appr.

DESIGNED BY:	CRAIG W. KILEY	CHECKED BY:	TVW	DRAWN BY:	EC
DATE:	09/06/2007	SHEET NO.:	19 OF 24	DRAWING NO.:	50 2 164
APPROVAL RECOMMENDED: PREPARED UNDER THE DIRECTION OF					
APPROVED: CRAIG W. KILEY, DISTRICT ENGINEER					

CALIFORNIA
MARIN COUNTY
NAPA RIVER
CONDITION SURVEY
22 - 24 AUGUST 2007

Sheet reference number
C19