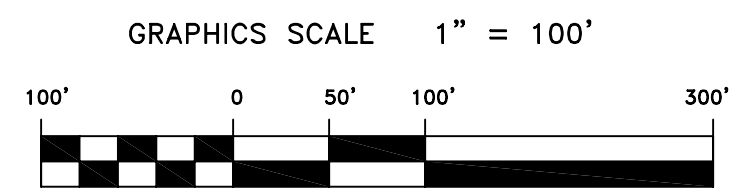
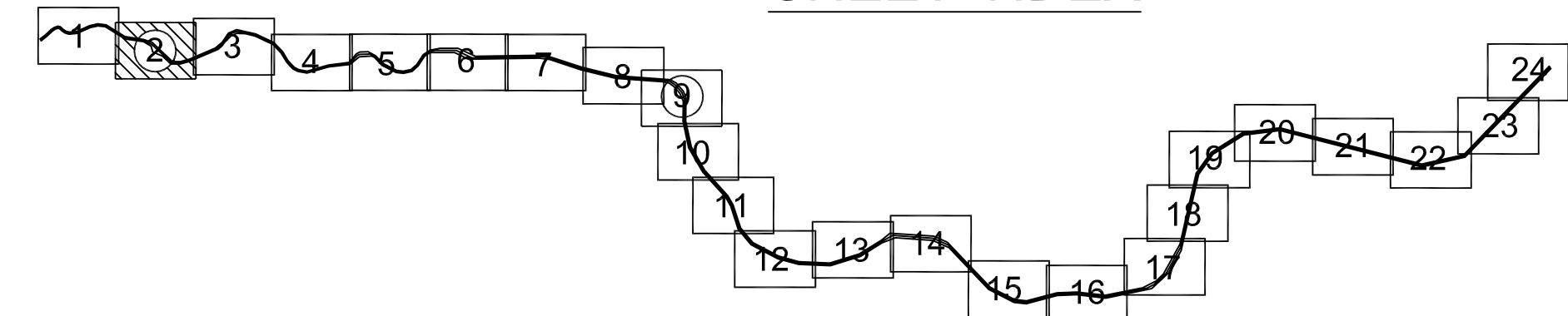
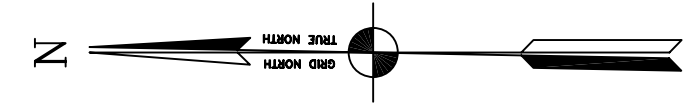


PRELIMINARY ISSUE
THIS PLAN ISSUED FOR
ADVANCE INFORMATION ONLY



US Army Corps
of Engineers
San Francisco District
333 Market Street
San Francisco, CA 94105

Mark	Description	Date	Appr.

DESIGNED BY:	CHECKED BY:	DRAWN BY:	EC
DATE:	SHEET NO.:	DRAWING NO.:	
09/06/2007	2 OF 24	50	2
APPROVAL RECOMMENDED:		DRAWING NO.:	
PREPARED UNDER THE DIRECTION OF		DRAWING NO.:	
CRAIG W. KILEY		DRAWING NO.:	
LT. COLONEL, C.E., DISTRICT ENGINEER		DRAWING NO.:	
SUBMITTED:		APPROVED:	
Hydro Survey Team Leader		Chief, Technical Support Section	
APPROVAL RECOMMENDED:		APPROVED:	
Chief, Construction Branch			

CALIFORNIA
MARIN COUNTY
NAPA RIVER
CONDITION SURVEY
22 - 24 AUGUST 2007

Sheet reference number
C2