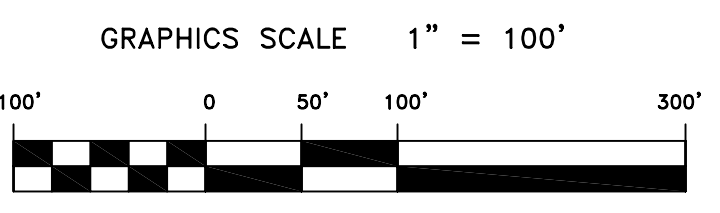
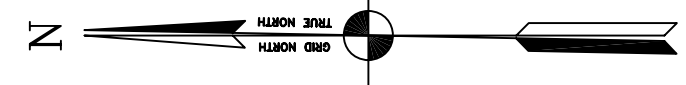
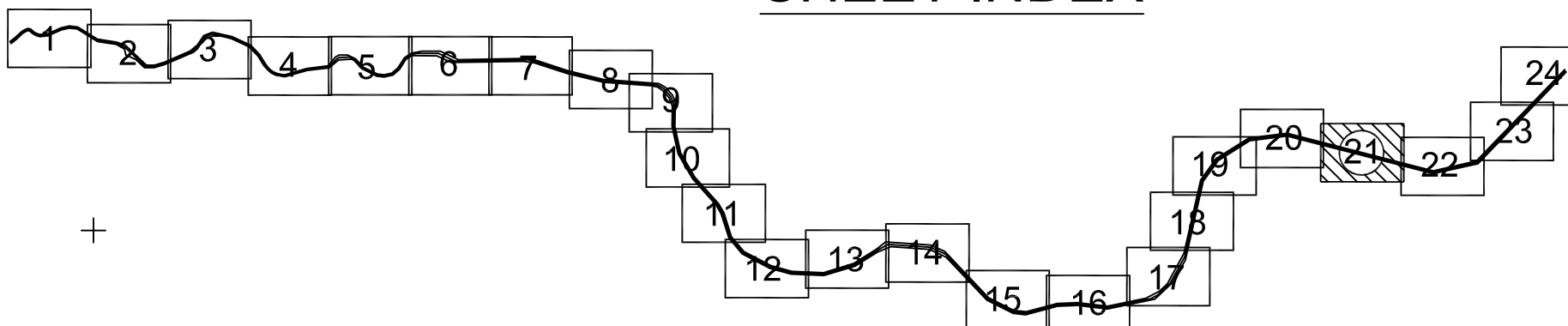


PRELIMINARY ISSUE
THIS PLAN ISSUED FOR
ADVANCE INFORMATION ONLY



SHEET INDEX



MATCHLINE - SHEET 22

US Army Corps
of Engineers
San Francisco District
333 Market Street
San Francisco, CA 94105

Mark	Description	Date	Appr.

SUBMITTED:	DESIGNED BY:	CHECKED BY:	DRAWN BY:
Hydro Survey Team Leader	TVW	TVW	EC
APPROVAL RECOMMENDED:	DATE:	SHEET NO.	DRAWING NO.
Chief, Technical Support Section	09/06/2007	21 OF 24	50 2 164
APPROVED:	PREPARED UNDER THE DIRECTION OF		
Chief, Construction Branch	CRAIG W. KILEY		
	LT. COLONEL, C.E., DISTRICT ENGINEER		

MARIN COUNTY
CALIFORNIA
NAPA RIVER
CONDITION SURVEY
22 - 24 AUGUST 2007

Sheet reference
number
C21