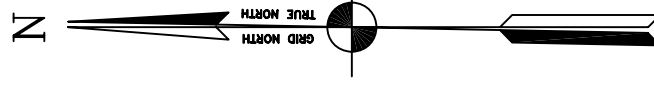
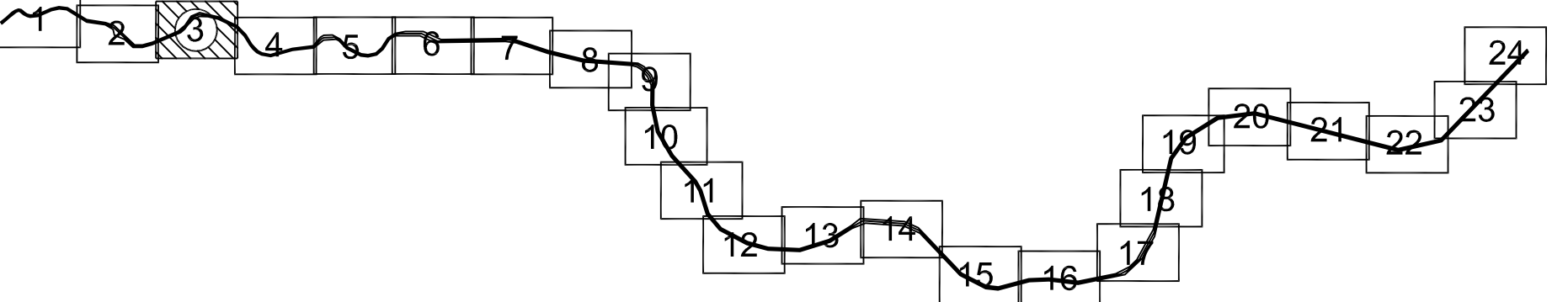


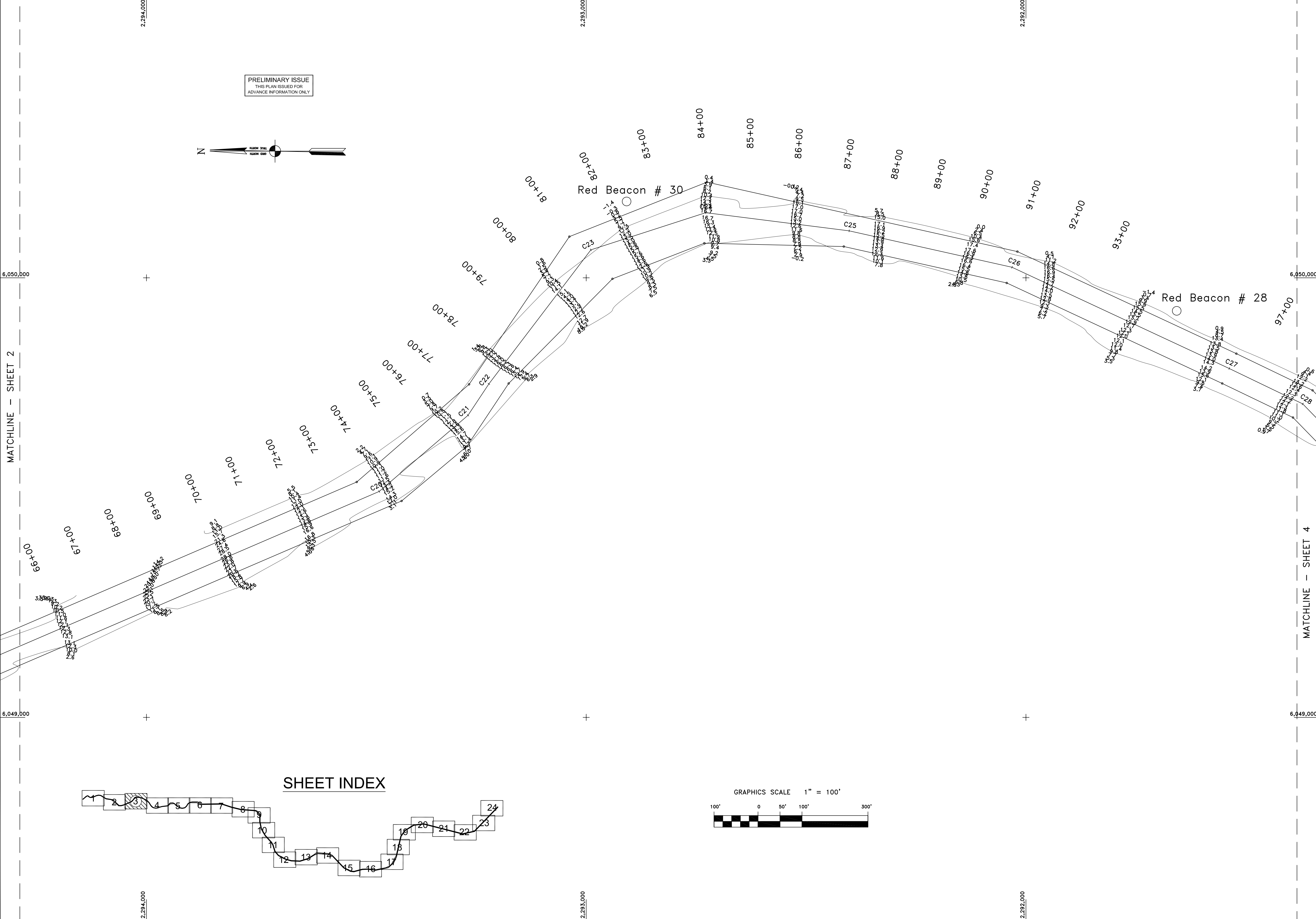
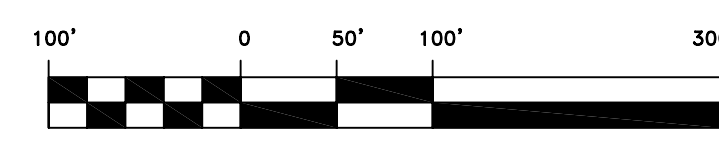
PRELIMINARY ISSUE  
THIS PLAN ISSUED FOR  
ADVANCE INFORMATION ONLY



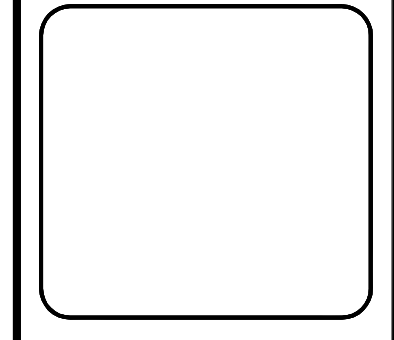
SHEET INDEX



GRAPHICS SCALE 1" = 100'



US Army Corps  
of Engineers  
San Francisco District  
333 Market Street  
San Francisco, CA 94105



Mark	Description	Date	Appr.

SUBMITTED:	DESIGNED BY:	CHECKED BY:	DRAWN BY:
Hydro Survey Team Leader	TVW	TVW	EC
APPROVAL RECOMMENDED:	SHEET NO.	DRAWING NO.	
Chief, Technical Support Section	09/06/2007	3 OF 24	50 2 164
APPROVED:	PREPARED UNDER THE DIRECTION OF		
Chief, Construction Branch	CRAIG W. KILEY		
	LT. COLONEL, C.E., DISTRICT ENGINEER		

CALIFORNIA  
MARIN COUNTY  
NAPA RIVER  
CONDITION SURVEY  
22 - 24 AUGUST 2007

Sheet  
reference  
number  
**C3**

4  
3  
2  
1  
2,294,000  
2,293,000  
2,292,000  
6,050,000  
6,049,000  
6,048,000  
MATCHLINE - SHEET 2  
MATCHLINE - SHEET 4  
A  
B  
C  
60+00  
67+00  
69+00  
70+00  
71+00  
72+00  
73+00  
74+00  
75+00  
76+00  
77+00  
78+00  
79+00  
80+00  
81+00  
82+00  
83+00  
84+00  
85+00  
86+00  
87+00  
88+00  
89+00  
90+00  
91+00  
92+00  
93+00  
94+00  
95+00  
96+00  
97+00  
C21  
C22  
C23  
C24  
C25  
C26  
C27  
C28  
Red Beacon # 30  
Red Beacon # 28