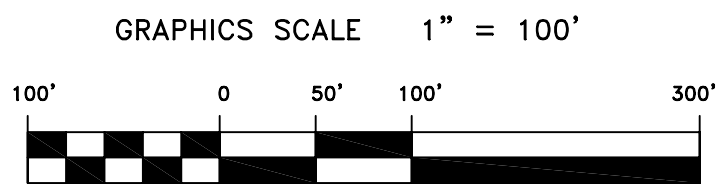
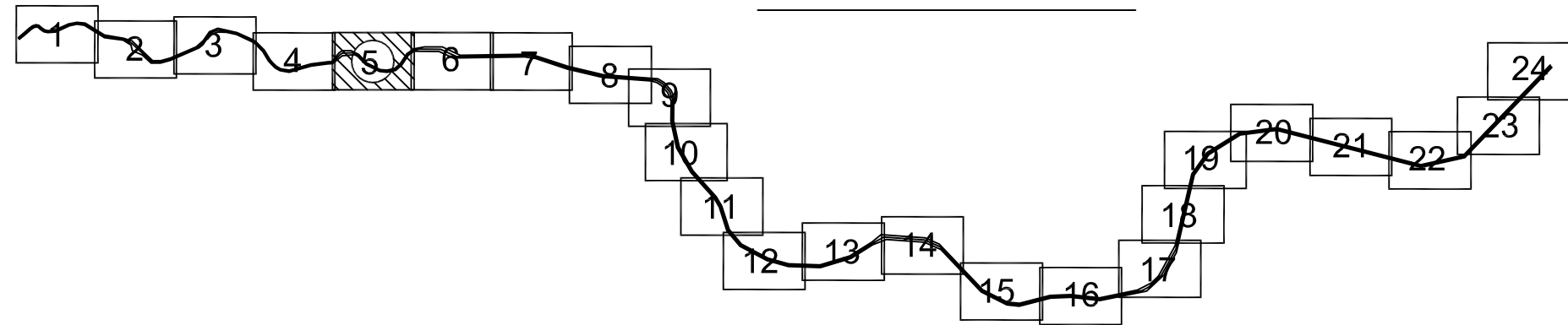



PRELIMINARY ISSUE
THIS PLAN ISSUED FOR
ADVANCE INFORMATION ONLY



SHEET INDEX




US Army Corps
of Engineers
San Francisco District
333 Market Street
San Francisco, CA 94105

Mark	Description	Date	Appr.

SUBMITTED: Hydro Survey Team Leader APPROVAL RECOMMENDED: Chief, Technical Support Section APPROVED: Chief, Construction Branch	DESIGNED BY:	CHECKED BY:	DRAWN BY:
	DATE: 09/06/2007	TJVW	TVW EC
SHEET NO. 5 OF 24		DRAWING NO. 2 164	
PREPARED UNDER THE DIRECTION OF CRAIG W. KILEY LT. COLONEL, C.E., DISTRICT ENGINEER			

MARIN COUNTY CALIFORNIA
NAPA RIVER
CONDITION SURVEY
22 - 24 AUGUST 2007

Sheet reference number
C5

6,050,000

2,288,000

2,287,000

2,286,000

6,050,000

6,048,000

2,288,000

2,287,000

2,286,000

6,048,000

MATCHLINE - SHEET 4

MATCHLINE - SHEET 6

C

B

A

4

3

2

1