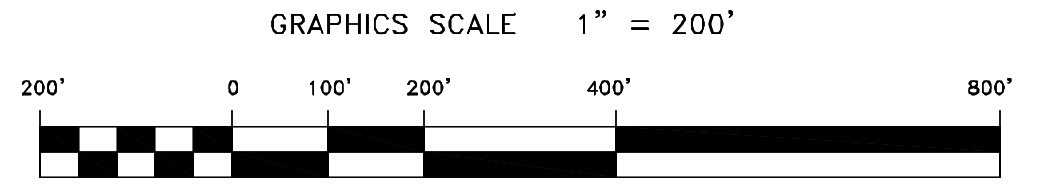
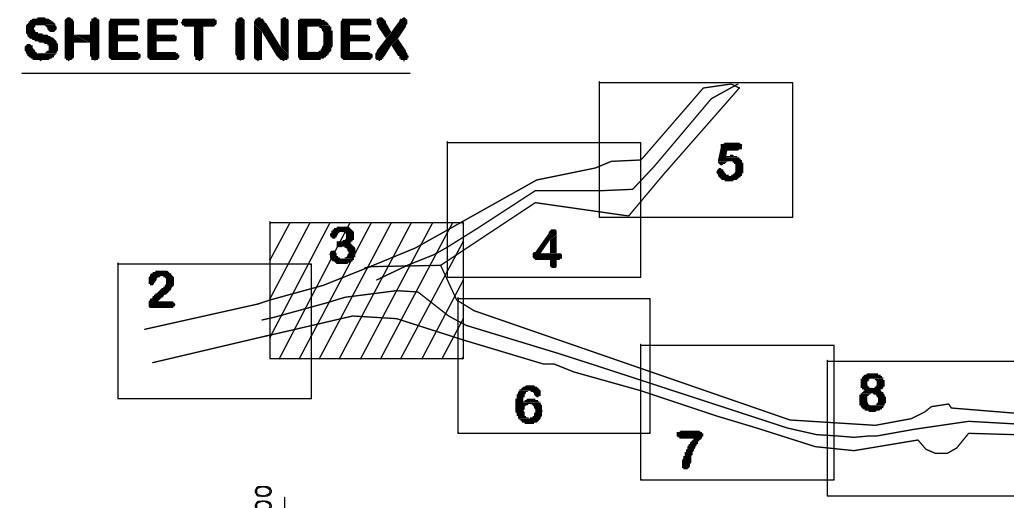
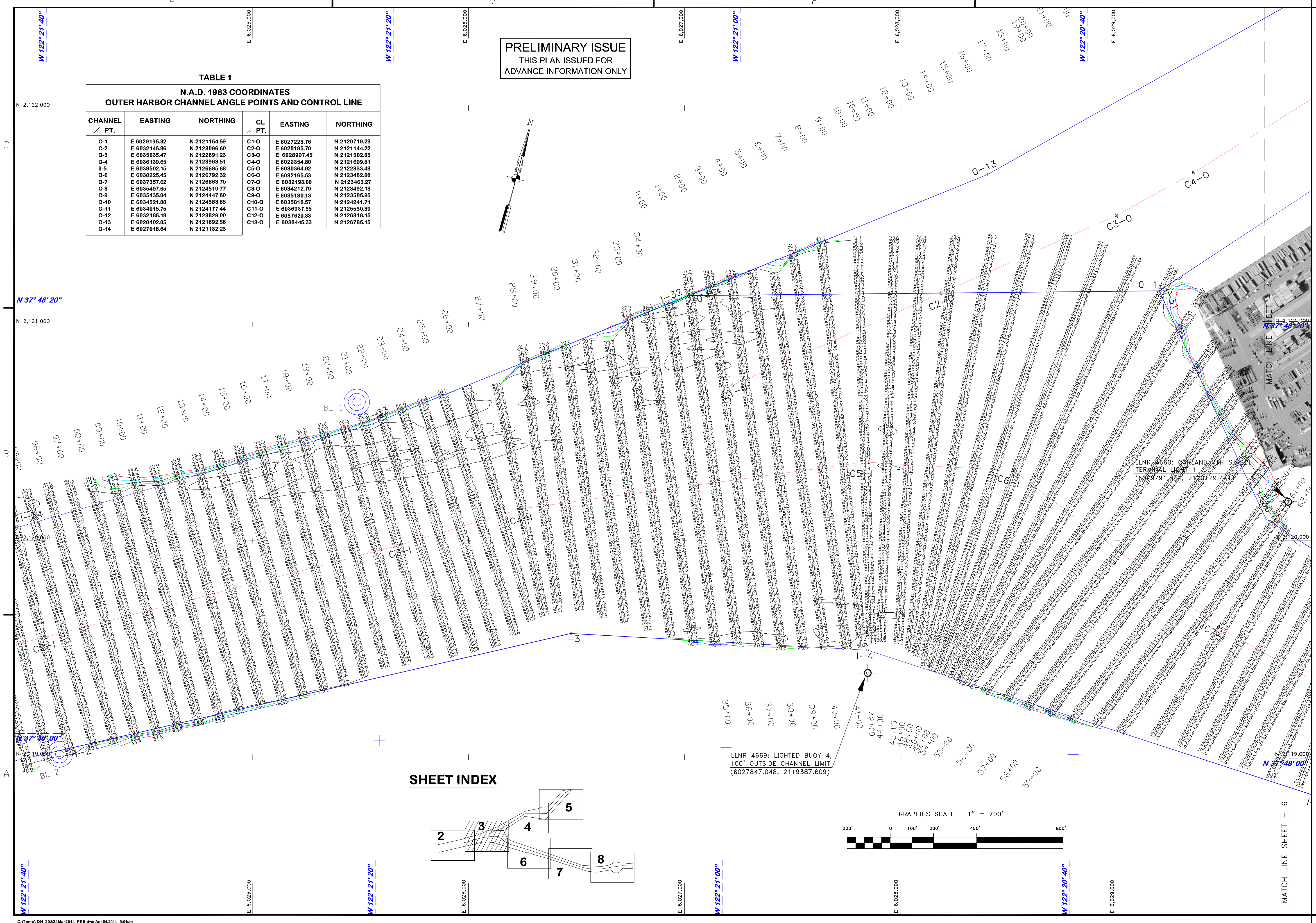
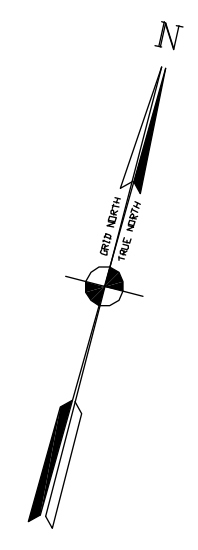


PRELIMINARY ISSUE
THIS PLAN ISSUED FOR
ADVANCE INFORMATION ONLY

TABLE 1
N.A.D. 1983 COORDINATES
OUTER HARBOR CHANNEL ANGLE POINTS AND CONTROL LINE

CHANNEL ∠ PT.	EASTING	NORTHING	∠ PT.	EASTING	NORTHING
O-1	E 6029195.32	N 2121154.59	C1-O	E 6027223.76	N 2120719.23
O-2	E 6032145.86	N 2123096.60	C2-O	E 6028185.70	N 2121144.22
O-3	E 6035035.47	N 2122691.23	C3-O	E 6028997.45	N 2121502.85
O-4	E 6036139.65	N 2123963.51	C4-O	E 6029354.80	N 2121699.81
O-5	E 6038502.15	N 2126855.88	C5-O	E 6030364.92	N 2122333.43
O-6	E 6038225.45	N 2126792.32	C6-O	E 6032165.53	N 2123462.88
O-7	E 6037357.62	N 2126663.70	C7-O	E 6032193.00	N 2123463.27
O-8	E 6035497.65	N 2124519.77	C8-O	E 6034212.79	N 2123492.13
O-9	E 6035435.04	N 2124447.60	C9-O	E 6035180.13	N 2123605.95
O-10	E 6034521.88	N 2124383.85	C10-O	E 6035818.57	N 2124241.71
O-11	E 6034015.75	N 2124177.44	C11-O	E 6036937.35	N 2125530.89
O-12	E 6032185.18	N 2123829.00	C12-O	E 6037620.33	N 2126318.15
O-13	E 6028402.05	N 2121692.56	C13-O	E 6038445.33	N 2126785.15
O-14	E 6027018.64	N 2121132.23			



LLNR 4660: OAKLAND 7TH STREET
TERMINAL LIGHT 1
(6029791.524, 2120779.444)

LLNR 4669: LIGHTED BUOY 4;
100' OUTSIDE CHANNEL LIMIT
(6027847.048, 2119387.609)

US Army Corps
of Engineers
San Francisco District
1455 Market Street
San Francisco, CA 94103

DESIGNED BY:	PDT	CHECKED BY:	PDT	DRAWN BY:	PDT
DATE:	3/25/2014	DATE:	3/25/2014	DATE:	3/25/2014
APPROVAL RECOMMENDED:	Chief, Hydro Survey Section	APPROVED:	John K. Baker	PREPARED UNDER THE DIRECTION OF:	John K. Baker
APPROVED:		APPROVED:		PREPARED UNDER THE DIRECTION OF:	John K. Baker
Chief, Construction Branch		Chief, Construction Branch		PREPARED UNDER THE DIRECTION OF:	John K. Baker

ALAMEDA COUNTY
CALIFORNIA
OAKLAND HARBOR
OUTER HARBOR
CONDITION SURVEY
20 MARCH 2014

MATCH LINE SHEET — 6
Sheet reference number
C3