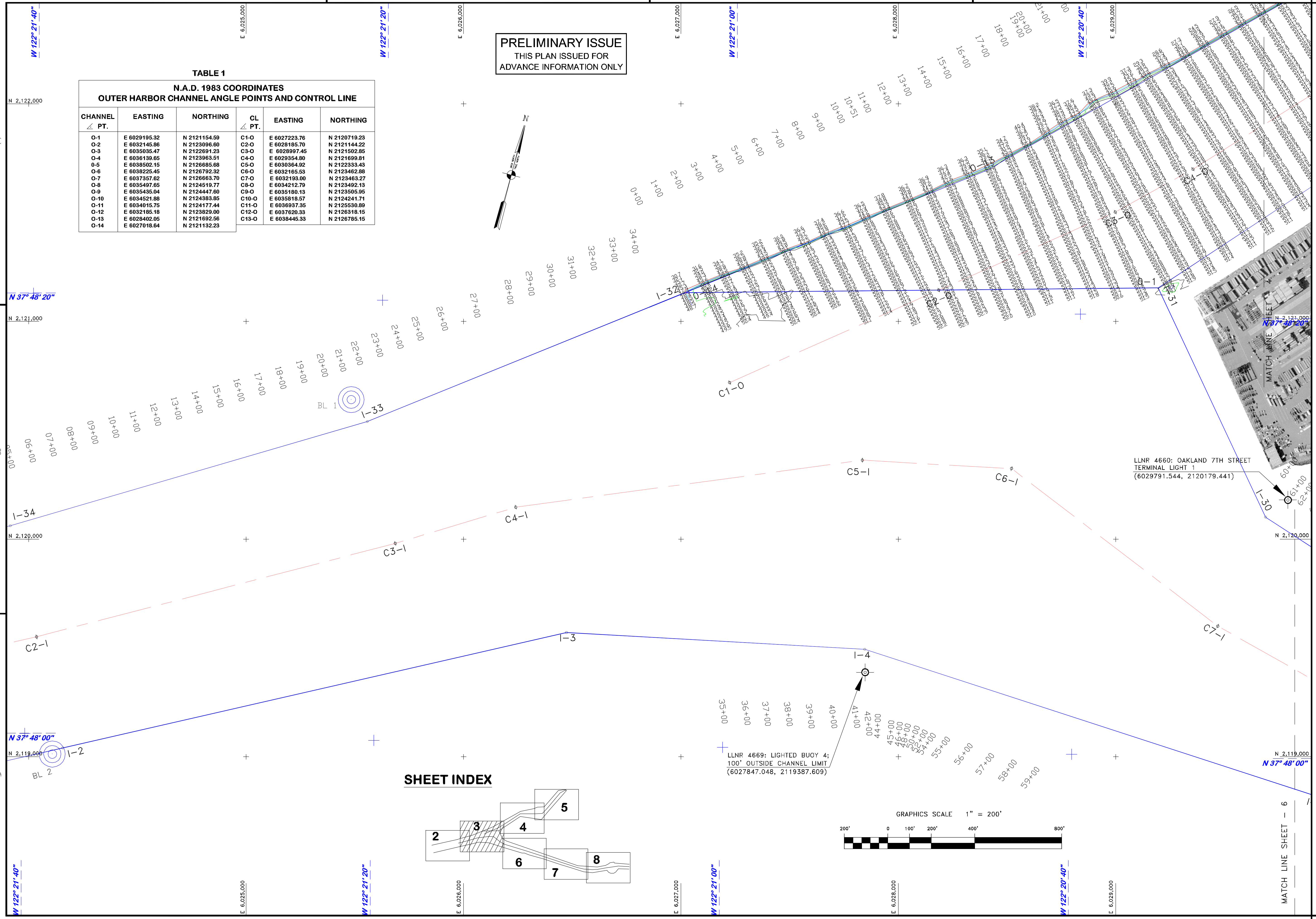
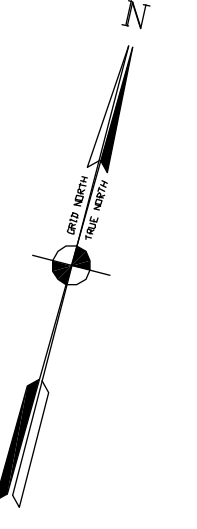


**TABLE 1
N.A.D. 1983 COORDINATES
OUTER HARBOR CHANNEL ANGLE POINTS AND CONTROL LINE**

CHANNEL ∠ PT.	EASTING	NORTHING	CL PT.	EASTING	NORTHING
O-1	E 6029195.32	N 2121154.59	C1-O	E 6027223.76	N 2120719.23
O-2	E 6032145.86	N 2123096.60	C2-O	E 6028185.70	N 2121144.22
O-3	E 6035035.47	N 2122691.23	C3-O	E 6028997.45	N 2121502.85
O-4	E 6036139.65	N 2123963.51	C4-O	E 6029354.80	N 2121699.81
O-5	E 6038502.15	N 2126855.88	C5-O	E 6030364.92	N 2122333.43
O-6	E 6038225.45	N 2126792.32	C6-O	E 6032165.53	N 2123462.88
O-7	E 6037357.62	N 2126663.70	C7-O	E 6032193.00	N 2123463.27
O-8	E 6035497.65	N 2124519.77	C8-O	E 6034212.79	N 2123492.13
O-9	E 6035435.04	N 2124447.60	C9-O	E 6035180.13	N 2123605.95
O-10	E 6034521.88	N 2124383.85	C10-O	E 6035818.57	N 2124241.71
O-11	E 6034015.75	N 2124177.44	C11-O	E 6036937.35	N 2125530.89
O-12	E 6032185.18	N 2123829.00	C12-O	E 6037620.33	N 2126318.15
O-13	E 6028402.05	N 2121692.56	C13-O	E 6038445.33	N 2126785.15
O-14	E 6027018.64	N 2121132.23			

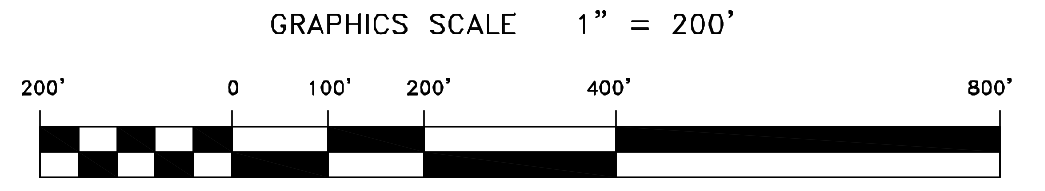
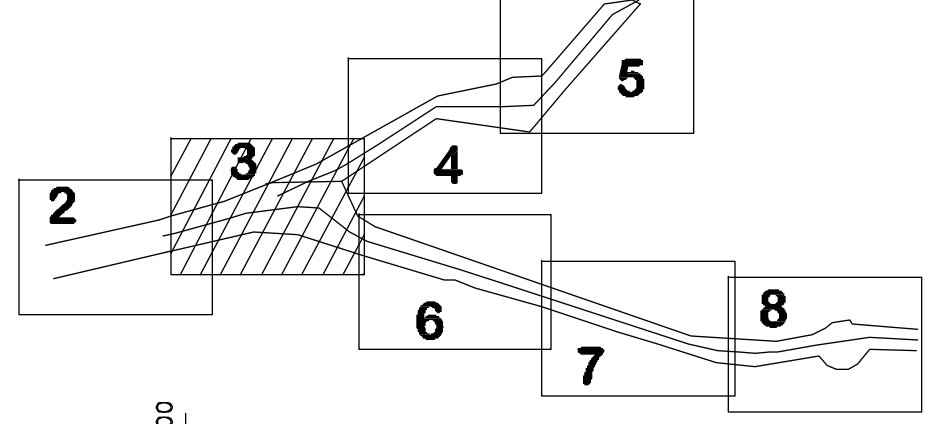
**PRELIMINARY ISSUE
THIS PLAN ISSUED FOR
ADVANCE INFORMATION ONLY**



LLNR 4660: OAKLAND 7TH STREET
TERMINAL LIGHT 1
(6029791.544, 2120179.441)

LLNR 4669: LIGHTED BUOY 4;
100' OUTSIDE CHANNEL LIMIT
(6027847.048, 2119387.609)

SHEET INDEX



 US Army Corps
of Engineers
San Francisco District
1455 Market Street
San Francisco, CA 94103

Mark	Description	Date	Appr.

DESIGNED BY: PDI	CHECKED BY: PDI	DRAWN BY: PDI
DATE: 12/9/2014	SHEET NO. 3 OF 8	DRAWING NO. 2
APPROVAL RECOMMENDED: Chief, Hydro Survey Section	PREPARED UNDER THE DIRECTION OF JOHN C. MORROW	
APPROVED: [Signature]	LT. COLONEL, C.E., DISTRICT ENGINEER	
SUBMITTED: PDI	APPROVED: [Signature]	APPROVED: [Signature]
Hydro Survey Team Leader	Chief, Hydro Survey Section	Chief, Construction Branch

CALIFORNIA
ALAMEDA COUNTY
OAKLAND HARBOR
OUTER HARBOR
REACH 7-8 COMPOSITE POSTDREDGE SURVEY
26 NOVEMBER & 03 DECEMBER 2014

Sheet reference number
C3