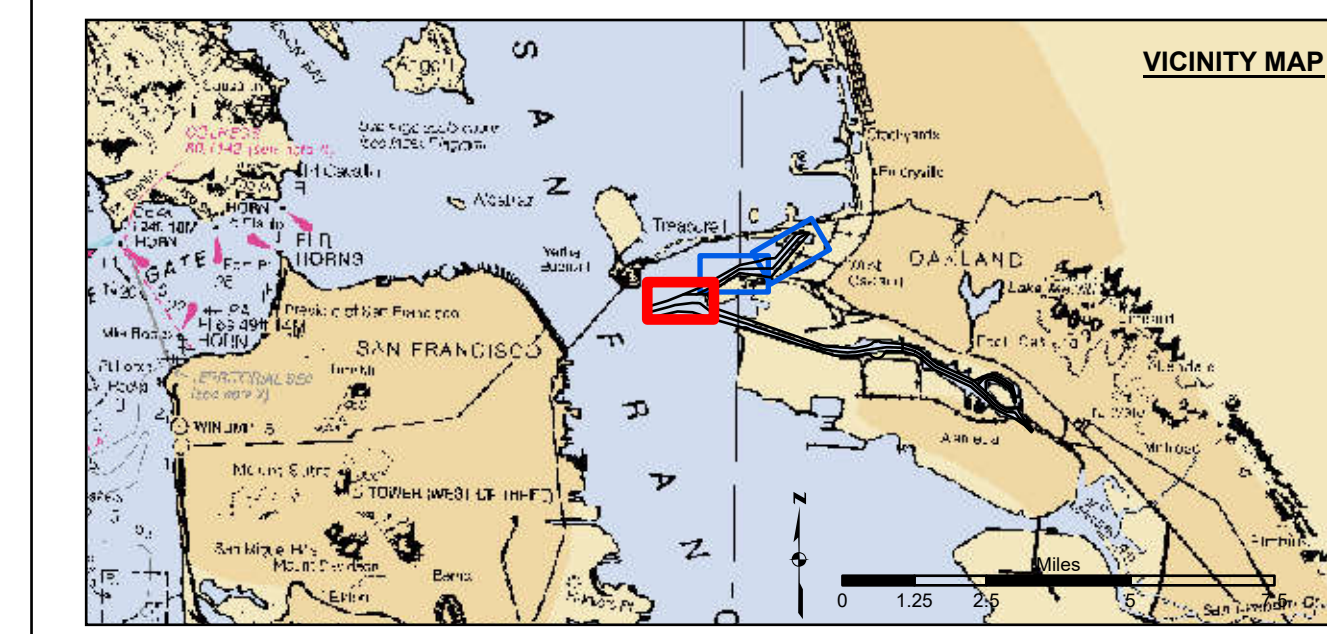
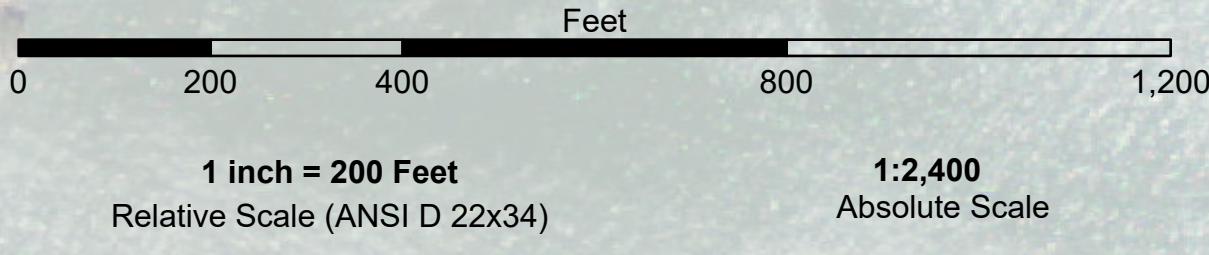


**PRELIMINARY ISSUE**  
THIS PLAN ISSUED FOR  
ADVANCE INFORMATION ONLY  
NOT FOR NAVIGATION PURPOSES



	Federal Navigation Channel		Beacon, General		Contours
	Shoaling Area		Obstruction Point		-50
	Placement Area		Navigation Buoy		-49
	Anchorage Area		Navigation Buoy		-48
	Wreck Area		Shoalest Sounding*		-47
	Submerged Wreck				-46
	Angle Point				

**NOTES:**  
DRAWING NOT TO BE USED FOR NAVIGATION. ONLY CHANNEL CONDITION AT DATE OF SURVEY.  
THE LOCATION OF ALL NAVIGATION AIDS ARE BASED ON INFORMATION PROVIDED BY THE U.S. COAST GUARD. BUOY LOCATIONS REPRESENT THE POSITION OF THE SINKER ONLY.  
SOUNDING FOR THE CHANNEL MEASURED WITH MULTIBEAM ECHOSOUNDER AND ARE SHOWN TO THE NEAREST TENTH FOOT.  
SOUNDINGS ARE BASED ON THE DATUM OF MEAN LOWER LOW WATER AT THE LOCALITY.  
SURVEYED BY THE CORPS OF ENGINEERS.  
BASE MAPS ARE USDA NAIP 2010.  
PLANE GRID AND COORDINATES ARE BASED ON LAMBERT PROJECTION, NAD 83, ZONE III CALIFORNIA AS DESCRIBED IN SPECIAL PUBLICATION NO. 235, PUBLISHED BY THE NATIONAL OCEAN SURVEY.  
PROJECT DEPTH OF OUTER AND INNER HARBOR IS -50 FEET.  
PROJECT DEPTH FROM INNER HARBOR TURNING BASIN TO PARK STREET BRIDGE IS 35 FEET.  
TIDAL CANAL PROJECT DEPTH IS 18 FEET.

**VERTICAL CONTROL:**  
PPCP: PORT 1 1936/PID HT0654.  
OAKLAND INNER REACH 4-8 DISK SET AT SOUTH END OF CLAY STREET, AT THE PORT OF OAKLAND CLAY STREET PIER. ELEVATION: 9.56 FEET MLLW - PUBLISHED 21 APR 2003 ON NOAA STATION 941 4764 TIDE GAUGE LOCATION IS CHISEL MARK APPROX. 10 FEET WEST ON TOP OF CONCRETE CURB. CHISEL ELEVATION 11.0 FEET MLLW.  
LPCP 1: 941 4777 B TIDAL/PID AE5211, OAKLAND INNER REACH 1-3 DISK SET IN BALLARD FOUNDATION NEAR THE NORTHEAST END OF BERTH 40 OF THE OAKLAND MIDDLE HARBOR. ELEVATION: 13.48 FEET MLLW - DERIVED FROM WGS-84 ELLIPSOID ELEVATION, GEOID09 AND VDATUM MODELS. TIDE GAUGE LOCATION IS IN FACE OF PILING AT BERTH 37; NAIL ELEVATION 9.7 FEET MLLW.  
LPCP 2: OAK OUTER 1 2012/PID, OAKLAND OUTER REACH 7-10 DISK SET IN PARKING LOT AT PIER 6 AMNAV TUG TERMINAL AT THE EDGE OF THE PIER. ELEVATION: 14.04 FEET MLLW - DERIVED FROM WGS-84 ELLIPSOID ELEVATION, GEOID09 AND DATUM MODELS TIDE GAUGE LOCATION IS IN FACE OF PILING AT PIER 6, 10' EAST OF BENCHMARK; NAIL ELEVATION 10.1 FEET MLLW.  
**HORIZONTAL CONTROL:**  
PRIMARY: RTK POSITIONING  
SECONDARY: COAST GUARD DGPS D-BEACON

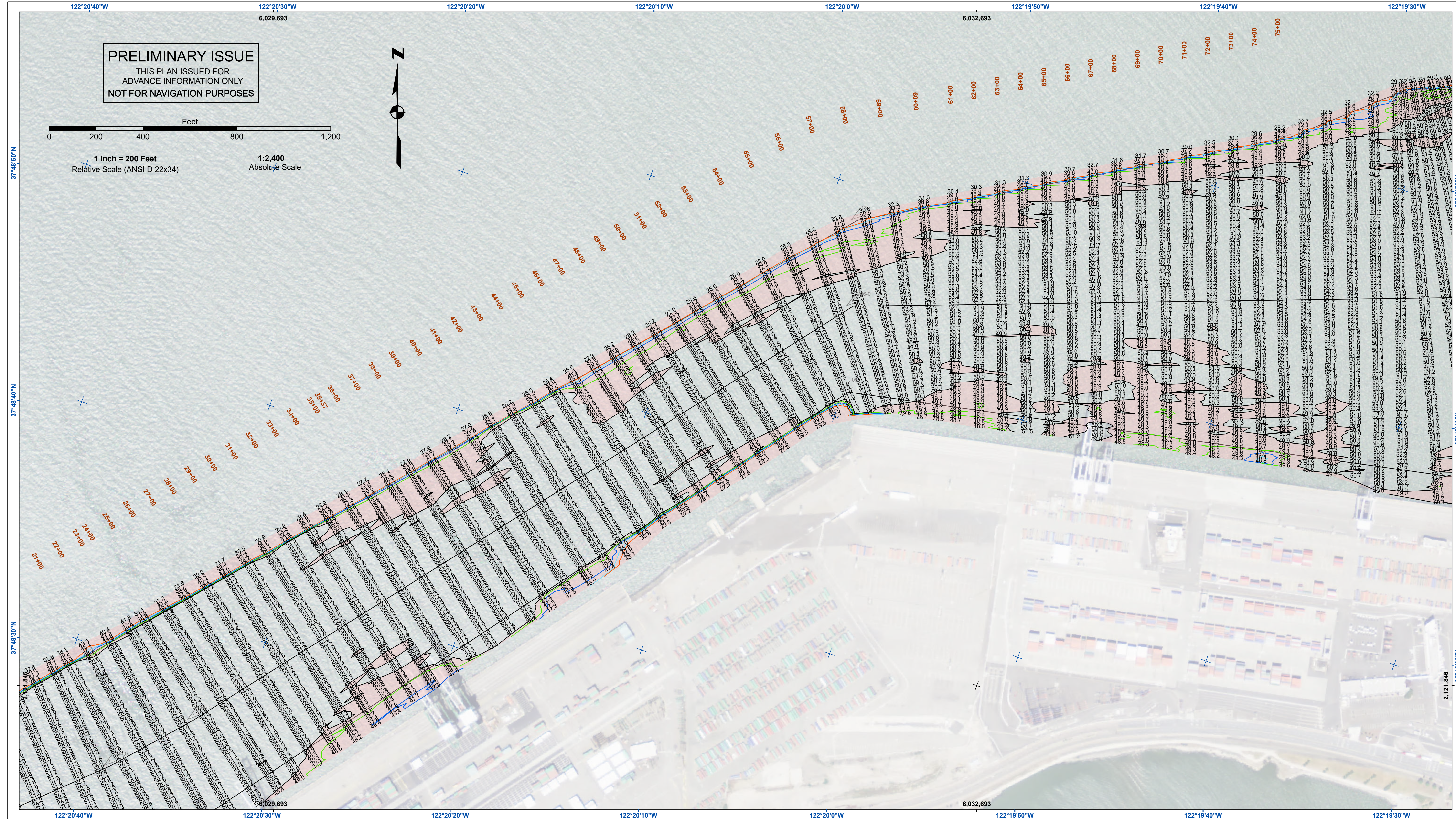
**US Army Corps of Engineers**  
San Francisco District  
450 Golden Gate Ave.  
San Francisco, CA 94102

**DISCLAIMER:** The United States Government furnishes this information for general information only. The data represents the results of data collection and processing activities. The data is not intended for navigation purposes. The data is only valid for its intended use, content, time and date of collection. The data is not intended for use in any application of the data for other than its intended purpose. The United States Government makes no warranty, expressed, or implied concerning the accuracy, completeness, or reliability of the data furnished. The United States shall be under no liability whatsoever to any person by reason of any use made thereof. These data belong to the Government. Therefore the recipient may not transfer these data to others without also transferring this Disclaimer.

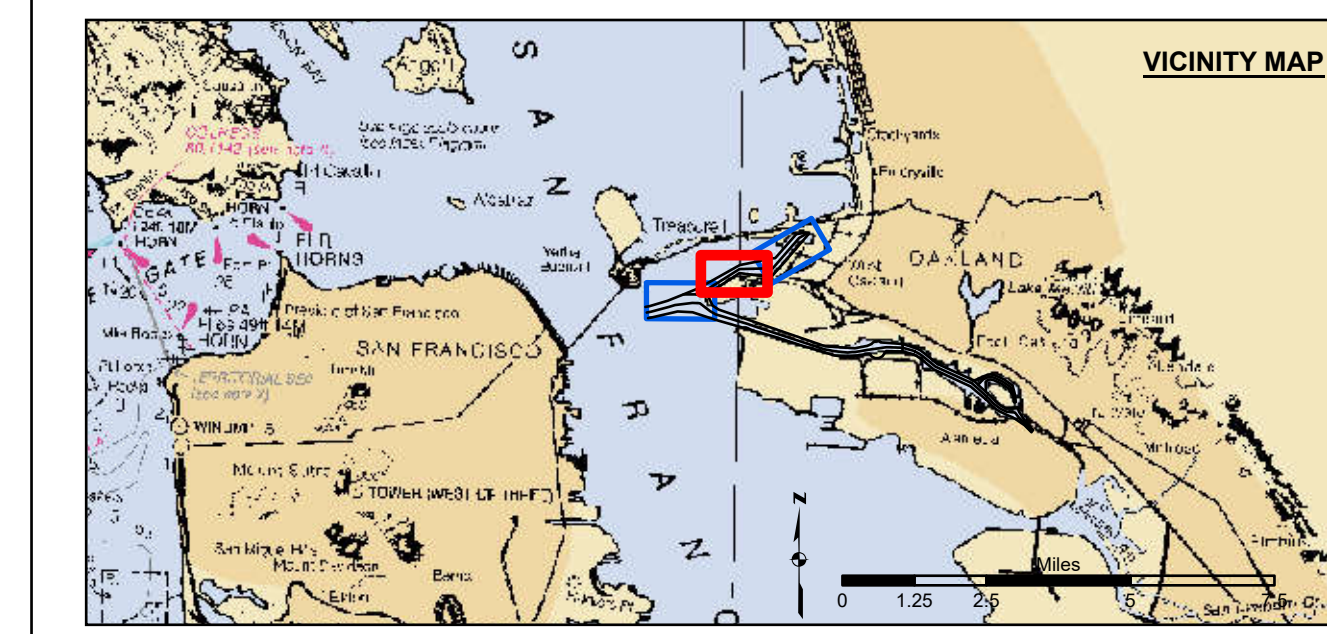
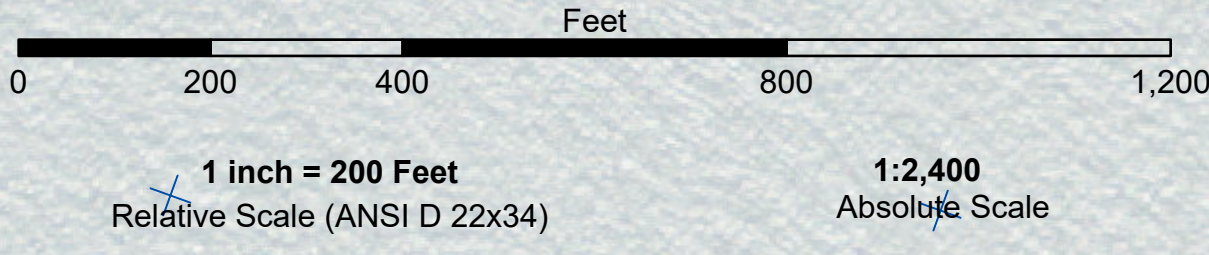
Prepared Under the Direction of:	Chart Date:
VIRGINIA R. BRICKNER	Aug 06, 2025
Submitted by:	Designed by:
Technical Services Section Leader	
Checked by:	Drawn by:
Chief, Technical Services Section	
Approved by:	
Chief, Geospatial Branch	

CALIFORNIA  
ALAMEDA COUNTY  
OAKLAND HARBOR  
OUTER HARBOR  
CONDITION SURVEY  
04 AUGUST 2025

**Sheet Reference Number 1 of 3**



**PRELIMINARY ISSUE**  
 THIS PLAN ISSUED FOR  
 ADVANCE INFORMATION ONLY  
 NOT FOR NAVIGATION PURPOSES



- |  |                            |  |                    |  |          |
|--|----------------------------|--|--------------------|--|----------|
|  | Federal Navigation Channel |  | Beacon, General    |  | Contours |
|  | Shoaling Area              |  | Obstruction Point  |  | -50      |
|  | Placement Area             |  | Navigation Buoy    |  | -49      |
|  | Anchorage Area             |  | Navigation Buoy    |  | -48      |
|  | Wreck Area                 |  | Shoalest Sounding* |  | -47      |
|  | Submerged Wreck            |  |                    |  | -46      |
|  | Angle Point                |  |                    |  |          |

**NOTES:**  
 DRAWING NOT TO BE USED FOR NAVIGATION. ONLY CHANNEL CONDITION AT DATE OF SURVEY.  
 THE LOCATION OF ALL NAVIGATION AIDS ARE BASED ON INFORMATION PROVIDED BY  
 THE U.S. COAST GUARD. BUOY LOCATIONS REPRESENT THE POSITION OF THE SINKER ONLY.  
 SOUNDING FOR THE CHANNEL MEASURED WITH MULTIBEAM ECHOSOUNDER AND ARE SHOWN  
 TO THE NEAREST TENTH FOOT.  
 SOUNDINGS ARE BASED ON THE DATUM OF MEAN LOWER LOW WATER AT THE LOCALITY.  
 SURVEYED BY THE CORPS OF ENGINEERS.  
 BASE MAPS ARE USDA NAIP 2010.  
 PLANE GRID AND COORDINATES ARE BASED ON LAMBERT PROJECTION, NAD 83, ZONE III  
 CALIFORNIA AS DESCRIBED IN SPECIAL PUBLICATION NO. 235, PUBLISHED BY THE NATIONAL  
 OCEAN SURVEY.  
 PROJECT DEPTH OF OUTER AND INNER HARBOR IS -50 FEET.  
 PROJECT DEPTH FROM INNER HARBOR TURNING BASIN TO PARK STREET BRIDGE IS 35 FEET.  
 TIDAL CANAL PROJECT DEPTH IS 18 FEET.

**VERTICAL CONTROL:**  
 PCPC: PORT 1 1936/PID HT0654.  
 OAKLAND INNER REACH 4-8 DISK SET AT SOUTH END OF CLAY STREET, AT THE PORT OF OAKLAND CLAY STREET PIER.  
 ELEVATION: 9.56 FEET MLLW - PUBLISHED 21 APR 2003 ON NOAA STATION 941 4764 TIDE GAUGE LOCATION IS CHISEL  
 MARK  
 APPROX. 10 FEET WEST ON TOP OF CONCRETE CURB. CHISEL ELEVATION 11.0 FEET MLLW.  
 LPCP 1: 941 4777 B TIDAL/PID AE5211, OAKLAND INNER REACH 1-3 DISK SET IN BALLARD FOUNDATION  
 NEAR THE NORTHEAST END OF BERTH 40 OF THE OAKLAND MIDDLE HARBOR.  
 ELEVATION: 13.48 FEET MLLW - DERIVED FROM WGS-84 ELLIPSOID ELEVATION, GEOID09 AND VDATUM MODELS  
 TIDE GAUGE LOCATION IS IN FACE OF PILING AT BERTH 37; NAIL ELEVATION 9.7 FEET MLLW.  
 LPCP 2: OAK OUTER 1 2012/PID, OAKLAND OUTER REACH 7-10 DISK SET IN PARKING LOT AT PIER 6 ANNAN TUG  
 TERMINAL AT THE EDGE OF THE PIER. ELEVATION: 14.04 FEET MLLW - DERIVED FROM WGS-84 ELLIPSOID ELEVATION,  
 GEOID09 AND DATUM MODELS TIDE GAUGE LOCATION IS IN FACE OF PILING AT PIER 6, 10' EAST OF BENCHMARK;  
 NAIL ELEVATION 10.1 FEET MLLW.  
**HORIZONTAL CONTROL:**  
 PRIMARY: RTK POSITIONING  
 SECONDARY: COAST GUARD DGPS D-BEACON

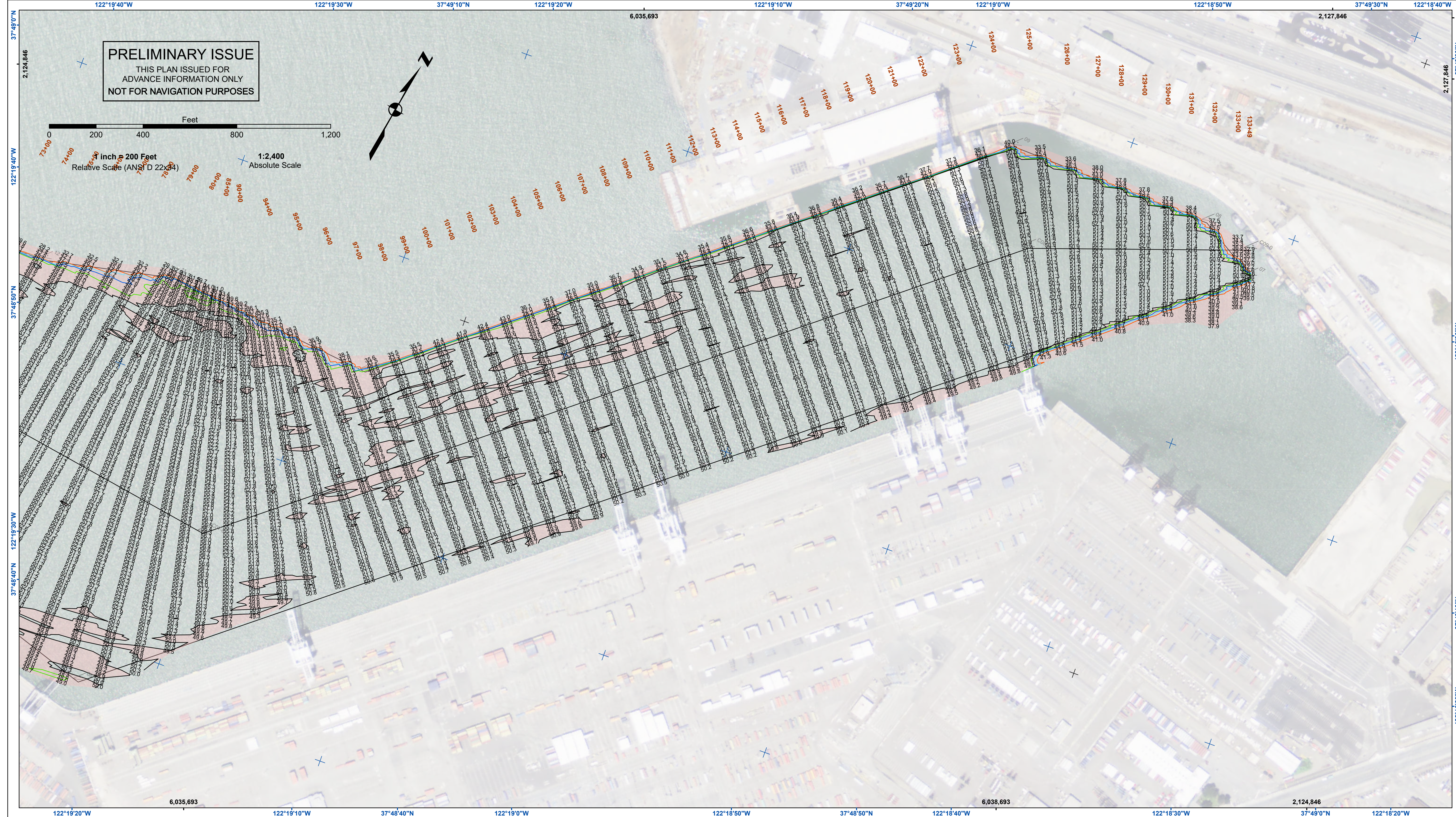
**US Army Corps of Engineers**  
 San Francisco District  
 450 Golden Gate Ave.  
 San Francisco, CA 94102

**DISCLAIMER:** The United States Government furnishes this information for general information only. The data represents the results of data collection and processing. The United States Government makes no warranties, expressed or implied, concerning the accuracy, completeness, or reliability of the information and the data furnished. The United States shall be under no liability whatsoever to any person by reason of any use made thereof. These data belong to the Government. Therefore the recipient may not transfer these data to others without also transferring this Disclaimer.

Prepared Under the Direction of	Surveyed By:	Chart Date:
LT COLONEL U.S. ARMY COMMANDING	Virginia R. Brickner	Aug 06, 2025
Submitted:	Plotted By:	Designed by:
Technical Services Section Leader		
Recommended:	Checked By:	Drawn by:
Chief, Technical Services Section		
Approved:		
Chief, Geospatial Branch		

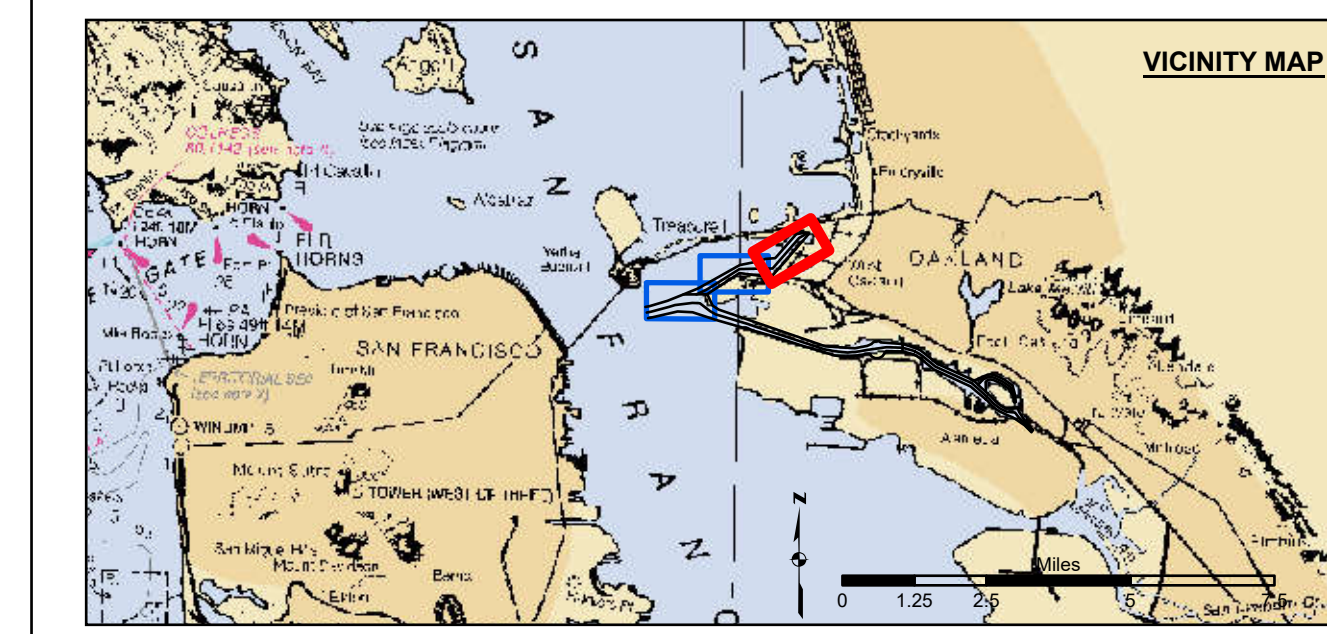
CALIFORNIA  
 ALAMEDA COUNTY  
**OAKLAND HARBOR  
 OUTER HARBOR  
 CONDITION SURVEY**  
 04 AUGUST 2025

**Sheet  
 Reference  
 Number  
 2 of 3**



**PRELIMINARY ISSUE**  
THIS PLAN ISSUED FOR  
ADVANCE INFORMATION ONLY  
NOT FOR NAVIGATION PURPOSES

Feet  
0 200 400 800 1,200  
1 inch = 200 Feet  
Relative Scale (ANSI Z39.18)  
1:2,400  
Absolute Scale



- Federal Navigation Channel
- Shoaling Area
- Placement Area
- Anchorage Area
- Wreck Area
- Submerged Wreck
- Angle Point
- Beacon, General
- Obstruction Point
- Navigation Buoy
- Navigation Buoy
- Shoalest Sounding\*
- Contours**
- 50
- 49
- 48
- 47
- 46

NOTES:  
DRAWING NOT TO BE USED FOR NAVIGATION. ONLY CHANNEL CONDITION AT DATE OF SURVEY.  
THE LOCATION OF ALL NAVIGATION AIDS ARE BASED ON INFORMATION PROVIDED BY  
THE U.S. COAST GUARD. BUOY LOCATIONS REPRESENT THE POSITION OF THE SINKER ONLY.  
SOUNDING FOR THE CHANNEL MEASURED WITH MULTIBEAM ECHOSOUNDER AND ARE SHOWN  
TO THE NEAREST TENTH FOOT.  
SOUNDINGS ARE BASED ON THE DATUM OF MEAN LOWER LOW WATER AT THE LOCALITY.  
SURVEYED BY THE CORPS OF ENGINEERS.  
BASE MAPS ARE USDA NAIP 2010.  
PLANE GRID AND COORDINATES ARE BASED ON LAMBERT PROJECTION, NAD 83, ZONE III  
CALIFORNIA AS DESCRIBED IN SPECIAL PUBLICATION NO. 235, PUBLISHED BY THE NATIONAL  
OCEAN SURVEY.  
PROJECT DEPTH OF OUTER AND INNER HARBOR IS -50 FEET.  
PROJECT DEPTH FROM INNER HARBOR TURNING BASIN TO PARK STREET BRIDGE IS 35 FEET.  
TIDAL CANAL PROJECT DEPTH IS 18 FEET.

VERTICAL CONTROL:  
PPCP: PORT 1 1936/PID HT0654.  
OAKLAND INNER REACH 4-8 DISK SET AT SOUTH END OF CLAY STREET, AT THE PORT OF OAKLAND CLAY STREET PIER.  
ELEVATION: 9.56 FEET MLLW - PUBLISHED 21 APR 2003 ON NOAA STATION 941 4764 TIDE GAUGE LOCATION IS CHISEL  
MARK  
APPROX. 10 FEET WEST ON TOP OF CONCRETE CURB. CHISEL ELEVATION 11.0 FEET MLLW.  
LPCP 1: 941 4777 B TIDAL/PID AE211, OAKLAND INNER REACH 1-3 DISK SET IN BALLARD FOUNDATION  
NEAR THE NORTHEAST END OF BERTH 40 OF THE OAKLAND MIDDLE HARBOR.  
ELEVATION: 13.48 FEET MLLW - DERIVED FROM WGS-84 ELLIPSOID ELEVATION, GEOID09 AND VDUTAM MODELS  
TIDE GAUGE LOCATION IS IN FACE OF PILING AT BERTH 37; NAIL ELEVATION 9.7 FEET MLLW.  
LPCP 2: OAK OUTER 1 2012/PID, OAKLAND OUTER REACH 7-10 DISK SET IN PARKING LOT AT PIER 6 AMNAV TUG  
TERMINAL AT THE EDGE OF THE PIER. ELEVATION: 14.04 FEET MLLW - DERIVED FROM WGS-84 ELLIPSOID ELEVATION,  
GEOID09 AND DATUM MODELS TIDE GAUGE LOCATION IS IN FACE OF PILING AT PIER 6, 10' EAST OF BENCHMARK;  
NAIL ELEVATION 10.1 FEET MLLW.  
HORIZONTAL CONTROL:  
PRIMARY: RTK POSITIONING  
SECONDARY: COAST GUARD DGPS D-BEACON

**US Army Corps  
of Engineers**  
San Francisco District  
450 Golden Gate Ave.  
San Francisco, CA 94102

**DISCLAIMER**  
The United States Government furnishes this information as a service to the public and does not warrant, express or implied, the accuracy, completeness, or reliability of the information. The United States shall be under no liability whatsoever to any person by reason of any use made thereof. These data belong to the Government. Therefore the recipient may not transfer these data to others without also transferring this Disclaimer.

Chart Date:	Aug 06, 2025
Designed by:	
Drawn by:	
Surveyed By:	
Plotted By:	
Checked By:	
Approved:	

CALIFORNIA  
ALAMEDA COUNTY  
**OAKLAND HARBOR  
OUTER HARBOR  
CONDITION SURVEY**  
04 AUGUST 2025

**Sheet  
Reference  
Number  
3 of 3**