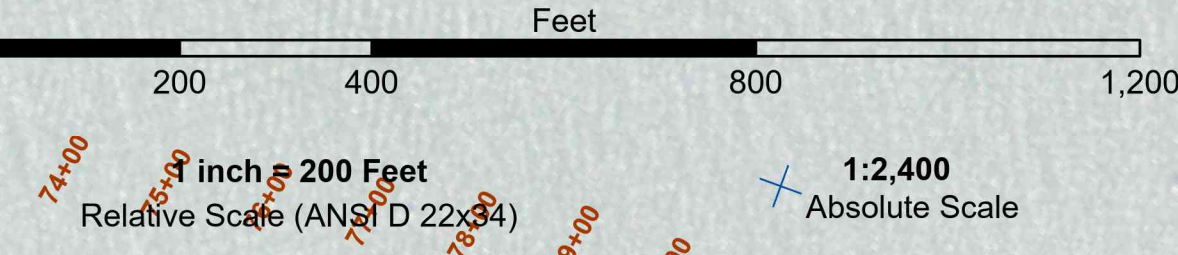


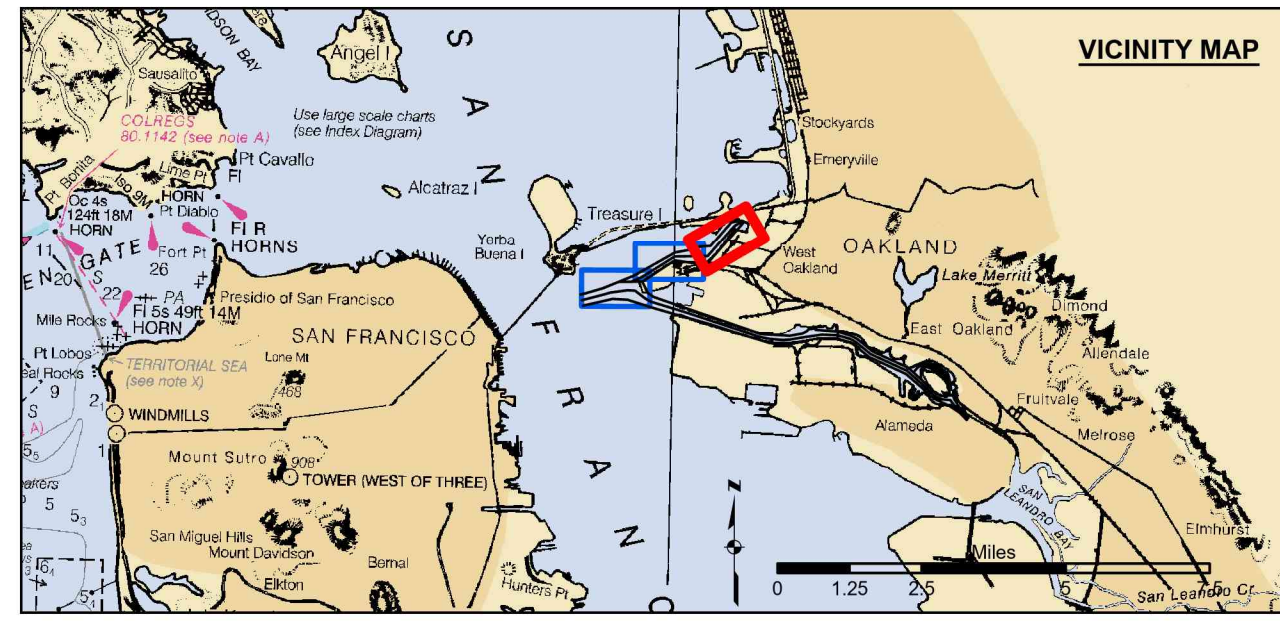
PRELIMINARY ISSUE
THIS PLAN ISSUED FOR
ADVANCE INFORMATION ONLY
NOT FOR NAVIGATION PURPOSES



US Army Corps of Engineers
San Francisco District
450 Golden Gate Ave.
San Francisco, CA 94102

DISCLAIMER
The United States Government makes no warranty, expressed or implied, concerning the accuracy, completeness, or reliability of the data furnished. The United States shall be under no liability whatsoever to any person by reason of any use made thereof. These data belong to the Government. Therefore the recipient may not transfer these data to others without also transferring this disclaimer.

Prepared Under the Direction of	Chart Date:
VIRGINIA R. BRICKNER	Mar 19, 2026
Submittal	Designed by:
Technical Services Section Leader	
Recommended	Checked by:
Chief, Technical Services Section	
Approved	Drawn by:
Chief, Geospatial Branch	



- Federal Navigation Channel
- Shoaling Area
- Placement Area
- Anchorage Area
- Wreck Area
- Submerged Wreck
- Angle Point
- Beacon, General
- Obstruction Point
- Navigation Buoy
- Navigation Buoy
- Shoalest Sounding*

NOTES:
DRAWING NOT TO BE USED FOR NAVIGATION. ONLY CHANNEL CONDITION AT DATE OF SURVEY.
THE LOCATION OF ALL NAVIGATION AIDS ARE BASED ON INFORMATION PROVIDED BY THE U.S. COAST GUARD. BUOY LOCATIONS REPRESENT THE POSITION OF THE SINKER ONLY.
SOUNDING FOR THE CHANNEL MEASURED WITH MULTIBEAM ECHOSOUNDER AND ARE SHOWN TO THE NEAREST TENTH FOOT.
SOUNDINGS ARE BASED ON THE DATUM OF MEAN LOWER LOW WATER AT THE LOCALITY.
SURVEYED BY THE CORPS OF ENGINEERS.
BASE MAPS ARE USDA NAIP 2010.
PLANE GRID AND COORDINATES ARE BASED ON LAMBERT PROJECTION, NAD 83, ZONE III CALIFORNIA AS DESCRIBED IN SPECIAL PUBLICATION NO. 235, PUBLISHED BY THE NATIONAL OCEAN SURVEY.
PROJECT DEPTH OF OUTER AND INNER HARBOR IS -50 FEET.
PROJECT DEPTH FROM INNER HARBOR TURNING BASIN TO PARK STREET BRIDGE IS 35 FEET.
TIDAL CANAL PROJECT DEPTH IS 18 FEET.

VERTICAL CONTROL:
PPCP: PORT 1 1936/PID HT0654.
OAKLAND INNER REACH 4-6 DISK SET AT SOUTH END OF CLAY STREET, AT THE PORT OF OAKLAND CLAY STREET PIER. ELEVATION: 9.56 FEET MLLW - PUBLISHED 21 APR 2003 ON NOAA STATION 941 4764 TIDE GAUGE LOCATION IS CHISEL MARK APPROX. 10 FEET WEST ON TOP OF CONCRETE CURB; CHISEL ELEVATION 11.0 FEET MLLW.
LPCP 1: 941 4777 B TIDAL/PID AE211, OAKLAND INNER REACH 1-3 DISK SET IN BALLARD FOUNDATION NEAR THE NORTHEAST END OF BERTH 40 OF THE OAKLAND MIDDLE HARBOR. ELEVATION: 13.49 FEET MLLW - DERIVED FROM WGS-84 ELLIPSOID ELEVATION, GEIOD09 AND VDATUM MODELS TIDE GAUGE LOCATION IS IN FACE OF PILING AT BERTH 37; NAIL ELEVATION 8.7 FEET MLLW.
LPCP 2: OAK OUTER 1 2012/PID, OAKLAND OUTER REACH 7-10 DISK SET IN PARKING LOT AT PIER 6 MANUV TUG TERMINAL AT THE EDGE OF THE PIER. ELEVATION: 14.04 FEET MLLW - DERIVED FROM WGS-84 ELLIPSOID ELEVATION, GEIOD09 AND DATUM MODELS TIDE GAUGE LOCATION IS IN FACE OF PILING AT PIER 6, 10' EAST OF BENCHMARK; NAIL ELEVATION 10.1 FEET MLLW.
HORIZONTAL CONTROL:
PRIMARY: RTK POSITIONING
SECONDARY: COAST GUARD DGPS D-BEACON

ALAMEDA COUNTY
CALIFORNIA
OAKLAND HARBOR
OUTER HARBOR
POST-DREDGE SURVEY
REACH 11
21 FEBRUARY 2026

Sheet Reference Number 3 of 3