

PRELIMINARY ISSUE
THIS PLAN ISSUED FOR
ADVANCE INFORMATION ONLY



US Army Corps
of Engineers
San Francisco District
1455 Market Street
San Francisco, CA 94103

NO.	DATE	DESCRIPTION	APPR.

DESIGNED BY:	DRIVEN BY:
DATE:	DATE:
SHEET NO.	DRAWING NO.
6 OF 8	2
6/4/2008	XXX
PREPARED UNDER THE DIRECTION OF	
CRAIG W. KILLEY	
LT. COLONEL, C.E., DISTRICT ENGINEER	

ALAMEDA COUNTY
OAKLAND HARBOR
INNER HARBOR
PREDREDGE SURVEY
30 MAY 2008

Sheet
reference
number
C6

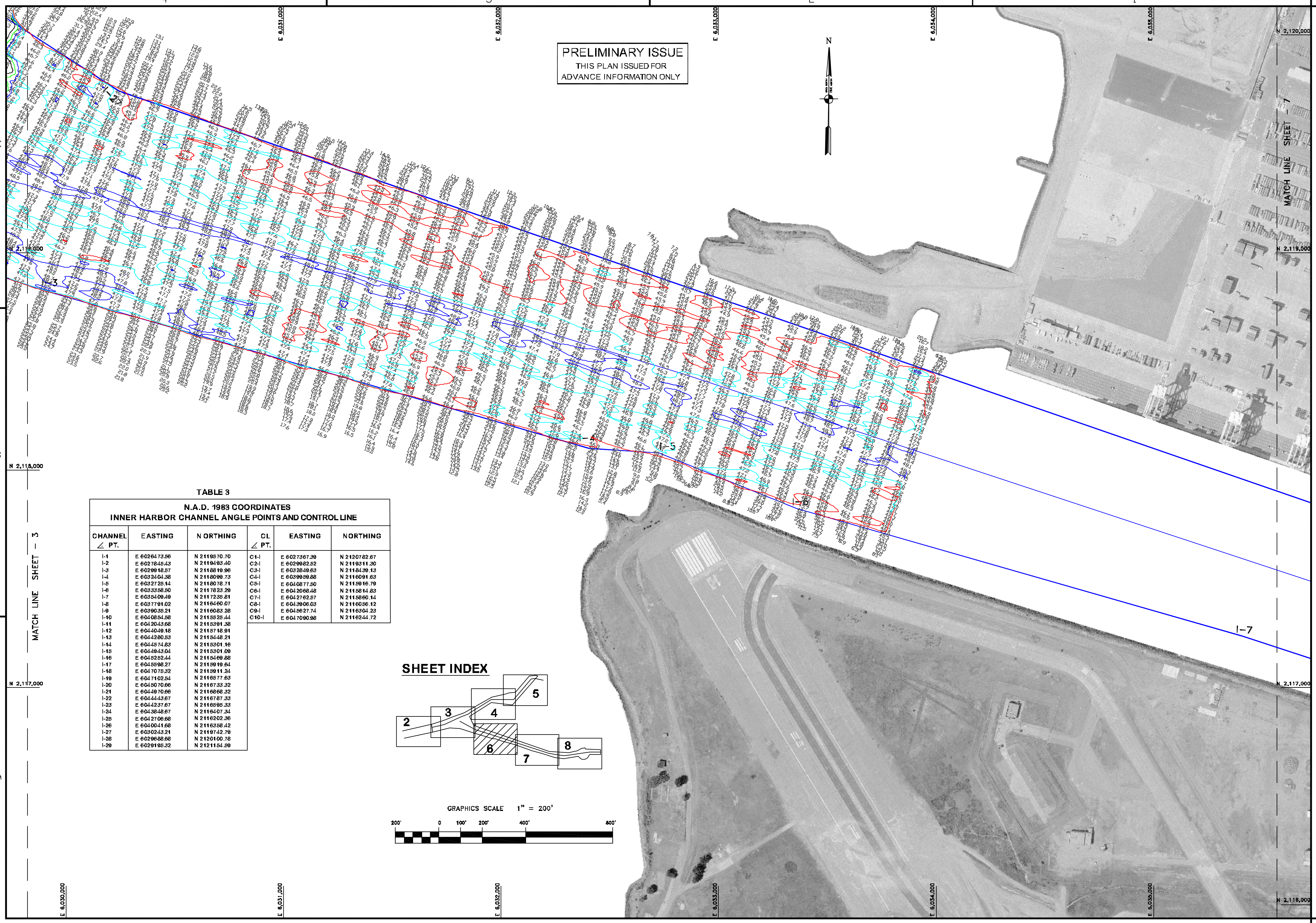
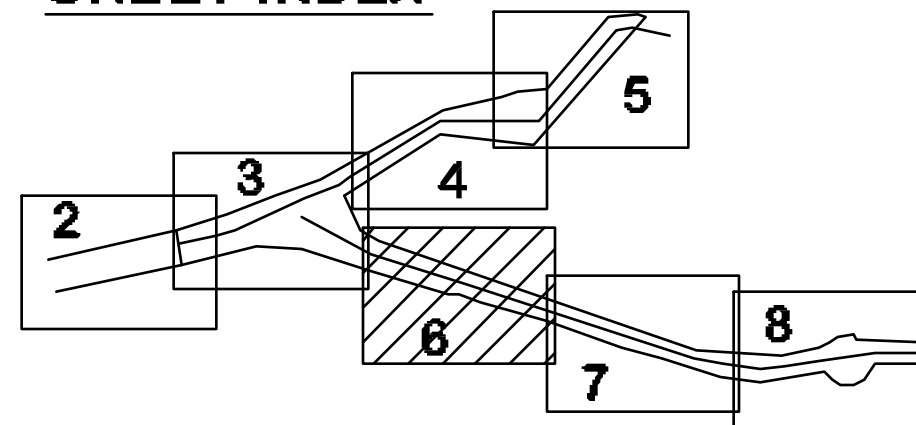


TABLE 3
N.A.D. 1983 COORDINATES
INNER HARBOR CHANNEL ANGLE POINTS AND CONTROL LINE

CHANNEL ∠ PT.	EASTING	N ORTHING	CL ∠ PT.	EASTING	NORTHING
I-1	E 60264.73.56	N 21195.70.70	C1-1	E 6027367.39	N 2120782.67
I-2	E 6027648.43	N 21194.93.40	C2-1	E 6029982.52	N 2119311.30
I-3	E 6029016.57	N 2118810.96	C3-1	E 6032848.83	N 2118439.13
I-4	E 6032404.38	N 2118099.73	C4-1	E 6039959.88	N 2116091.63
I-5	E 6032725.14	N 2118078.71	C5-1	E 6040877.50	N 2115916.79
I-6	E 6033358.50	N 2117823.29	C6-1	E 6042068.48	N 2115814.83
I-7	E 6035409.49	N 2117235.81	C7-1	E 6042762.57	N 2115860.14
I-8	E 6037791.02	N 2116460.07	C8-1	E 6043906.03	N 2116056.12
I-9	E 6039035.21	N 2116083.28	C9-1	E 6045627.74	N 2116304.23
I-10	E 6040654.58	N 2115525.44	C10-1	E 6047090.98	N 2116244.72
I-11	E 6042043.68	N 2115391.36			
I-12	E 6044049.18	N 2115718.91			
I-13	E 6044280.53	N 2115448.21			
I-14	E 6044574.83	N 2115301.16			
I-15	E 6044943.04	N 2115301.09			
I-16	E 6045252.44	N 2115409.88			
I-17	E 6045598.27	N 2115919.64			
I-18	E 6047075.32	N 2115911.24			
I-19	E 6047102.54	N 2116577.63			
I-20	E 6045070.66	N 2116733.32			
I-21	E 6044970.66	N 2116868.32			
I-22	E 6044443.67	N 2116787.33			
I-23	E 6044237.67	N 2116595.33			
I-24	E 6043648.67	N 2116407.34			
I-25	E 6042706.68	N 2116202.36			
I-26	E 6040041.68	N 2116358.42			
I-27	E 6030243.21	N 2119742.79			
I-28	E 6029688.68	N 2120100.78			
I-29	E 6029195.32	N 2121154.29			

SHEET INDEX



GRAPHICS SCALE 1" = 200'



E 6,030,000 E 6,031,000 E 6,032,000 E 6,033,000 E 6,034,000 E 6,035,000

4 3 2 1

MATCH LINE SHEET - 3

MATCH LINE SHEET - 7

N 2,118,000

N 2,119,000

N 2,117,000

N 2,117,000

A

N 2,116,000

I:\Survey\calkans\2008\calkans 3b\inner sv_03 30 2008\1\sv_03_2008\calkans 3b\inner sv_03 30 2008.dwg, 30 May 2008, 11:13am