

4

3

2

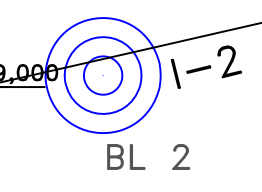
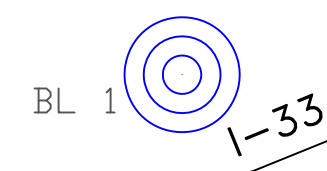
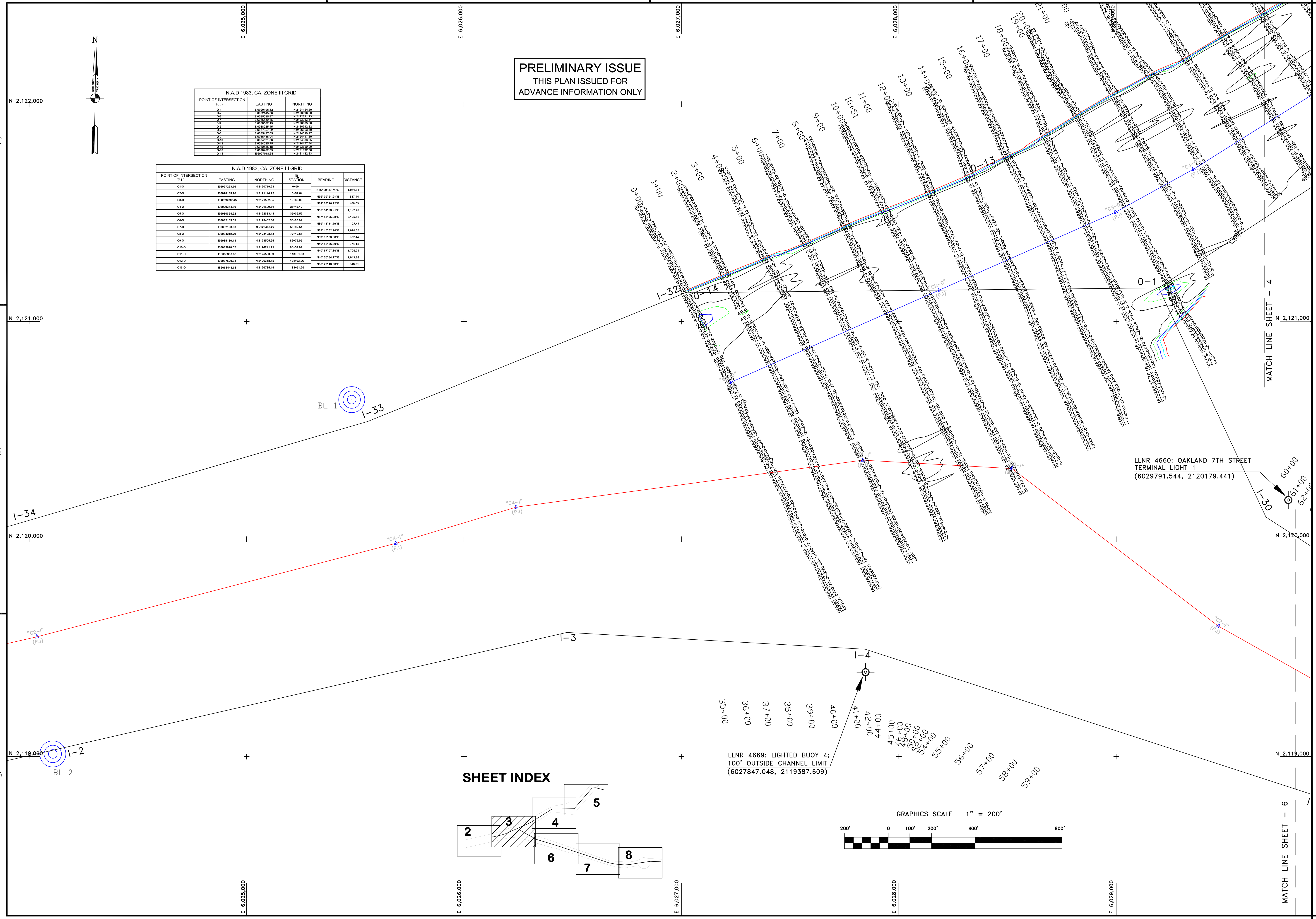
1



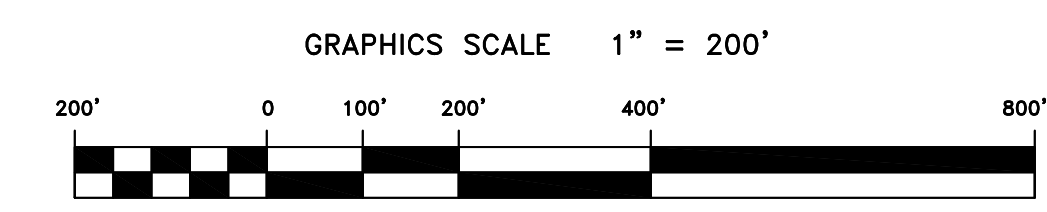
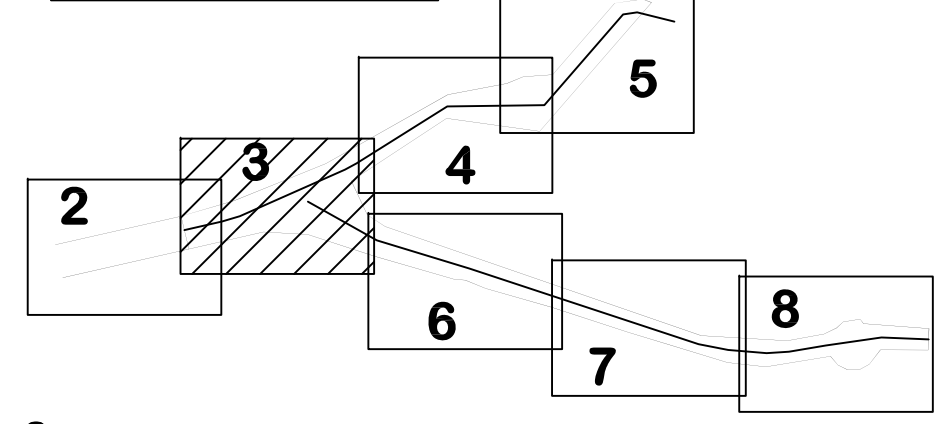
N.A.D 1983, CA, ZONE III GRID		
POINT OF INTERSECTION (P.I.)	EASTING	NORTHING
C-1	E 602079.38	N 212079.38
C-2	E 602079.38	N 212079.38
C-3	E 602079.38	N 212079.38
C-4	E 602079.38	N 212079.38
C-5	E 602079.38	N 212079.38
C-6	E 602079.38	N 212079.38
C-7	E 602079.38	N 212079.38
C-8	E 602079.38	N 212079.38
C-9	E 602079.38	N 212079.38
C-10	E 602079.38	N 212079.38
C-11	E 602079.38	N 212079.38
C-12	E 602079.38	N 212079.38
C-13	E 602079.38	N 212079.38

N.A.D 1983, CA, ZONE III GRID					
POINT OF INTERSECTION (P.I.)	EASTING	NORTHING	BL. STATION	BEARING	DISTANCE
C1-B	E 602079.38	N 212079.38	0+00	N65° 09' 49.74"E	1,051.64
C2-O	E 602086.70	N 212144.22	10+51.64	N65° 09' 51.21"E	887.44
C3-O	E 602097.45	N 212150.85	19+39.08	N61° 09' 18.22"E	408.03
C4-O	E 602094.80	N 212169.81	23+47.12	N67° 54' 03.91"E	1,192.40
C5-O	E 602064.02	N 212203.43	30+39.32	N67° 54' 03.91"E	2,128.02
C6-O	E 602165.53	N 212242.88	50+45.04	N65° 11' 11.79"E	27.47
C7-O	E 602198.00	N 212248.27	56+49.51	N65° 10' 52.96"E	2,020.00
C8-O	E 602412.79	N 212249.13	77+12.51	N65° 10' 53.38"E	367.44
C9-O	E 602516.19	N 212305.95	89+79.95	N60° 50' 58.80"E	974.14
C10-O	E 602619.57	N 212424.71	96+54.09	N60° 57' 57.86"E	1,705.94
C11-O	E 602637.35	N 212520.00	113+49.03	N60° 50' 34.77"E	1,043.24
C12-O	E 602720.38	N 212618.15	124+03.26	N60° 29' 13.93"E	948.01
C13-O	E 602840.33	N 212678.15	130+51.26		

PRELIMINARY ISSUE
THIS PLAN ISSUED FOR
ADVANCE INFORMATION ONLY



SHEET INDEX



US Army Corps of Engineers
San Francisco District
1455 Market Street
San Francisco, CA 94103

Mark	Description	Date	Appr.

Mark	Description	Date	Appr.

SUBMITTED:	PDT	CHECKED BY:	PDT	DRAWN BY:	PDT
	Hydro Survey Team Leader	APPROVAL RECOMMENDED:	SHEET NO.	DRAWING NO.	DRAWING NO.
			6/29/2010	3 OF 8	2 XXX
APPROVED:	Chief, Technical Support Section	DESIGNED BY:	PREPARED UNDER THE DIRECTION OF		
			LAURENCE M. FARRELL		
			LT. COLONEL, C.E., DISTRICT ENGINEER		

CALIFORNIA
ALAMEDA COUNTY
OAKLAND HARBOR
OUTER HARBOR
CONDITION SURVEY
17 MAY 2010

Sheet reference number
C3

M:\Branch_Folders\Construction\HydroSurvey\Admin\Surveys\oakland\2010\Outer\OO_May2010_Prel\OO_May2010_Prel.dwg Dec 01, 2010 - 10:25am