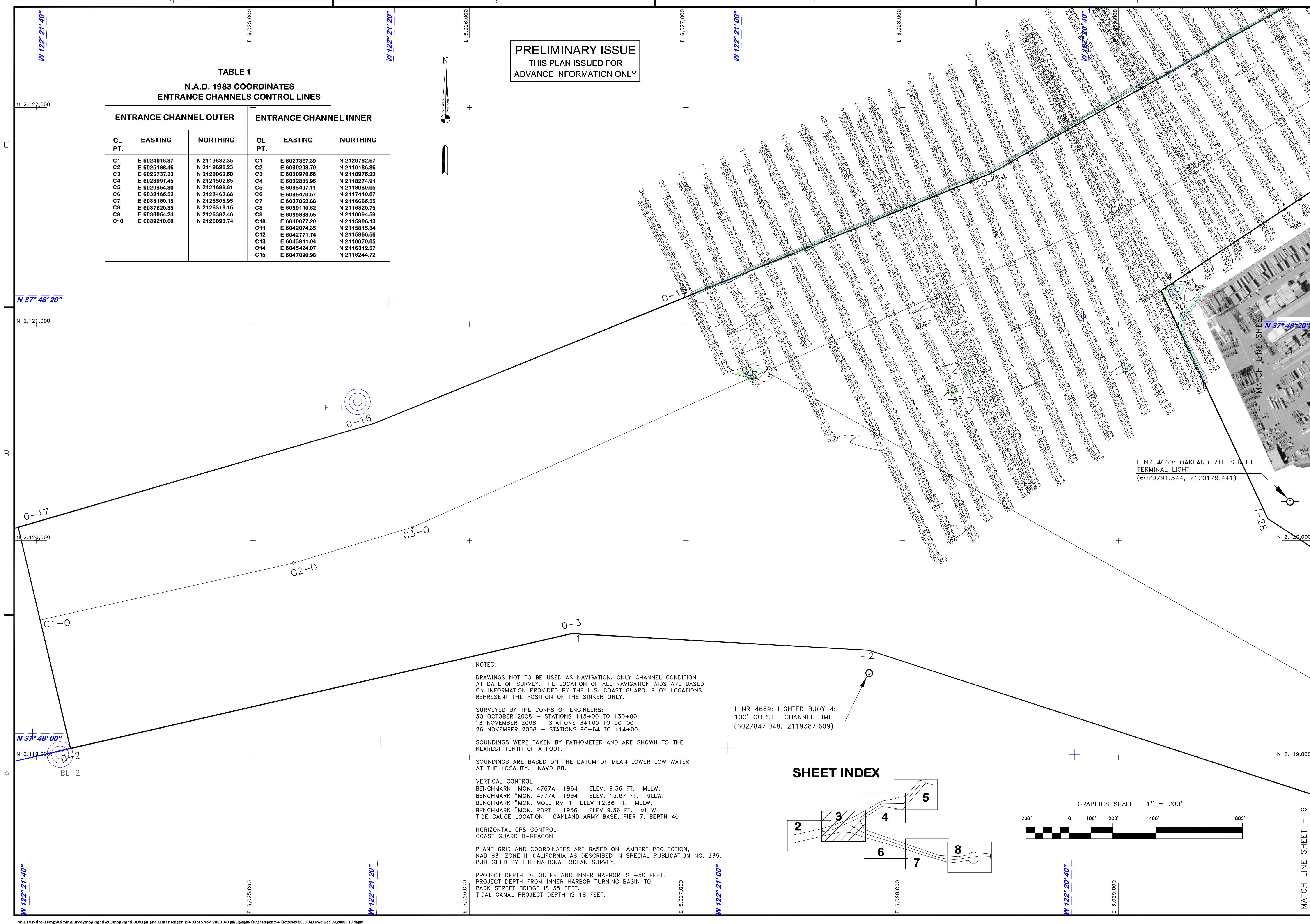
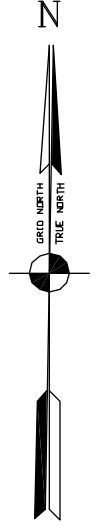


TABLE 1
N.A.D. 1983 COORDINATES
ENTRANCE CHANNELS CONTROL LINES

ENTRANCE CHANNEL OUTER			ENTRANCE CHANNEL INNER		
CL PT.	EASTING	NORTHING	CL PT.	EASTING	NORTHING
C1	E 6024016.97	N 2119632.95	C1	E 6027367.99	N 2120782.67
C2	E 6025188.46	N 2119896.23	C2	E 6030203.70	N 2119186.86
C3	E 6025737.33	N 2120062.50	C3	E 6030970.56	N 2118975.22
C4	E 6028997.45	N 2121502.85	C4	E 6032835.95	N 2118274.91
C5	E 6029354.80	N 2121699.81	C5	E 6033407.11	N 2118039.05
C6	E 6032165.53	N 2123462.88	C6	E 6035479.57	N 2117440.87
C7	E 6035180.13	N 2123505.95	C7	E 6037862.88	N 2116685.55
C8	E 6037620.33	N 2126318.15	C8	E 6039110.62	N 2116320.75
C9	E 6038054.24	N 2126382.46	C9	E 6039888.05	N 2116094.59
C10	E 6039210.60	N 2126093.74	C10	E 6040877.20	N 2115906.13
			C11	E 6042074.35	N 2115815.34
			C12	E 6042771.74	N 2115866.56
			C13	E 6043911.04	N 2116070.05
			C14	E 6045424.07	N 2116312.57
			C15	E 6047090.98	N 2116244.72

PRELIMINARY ISSUE
THIS PLAN ISSUED FOR
ADVANCE INFORMATION ONLY



LLNR 4660: OAKLAND 7TH STREET
TERMINAL LIGHT 1
(6029791.544, 2120179.441)

LLNR 4669: LIGHTED BUOY 4;
100' OUTSIDE CHANNEL LIMIT
(6027847.048, 2119387.609)

NOTES:

DRAWINGS NOT TO BE USED AS NAVIGATION. ONLY CHANNEL CONDITION AT DATE OF SURVEY. THE LOCATION OF ALL NAVIGATION AIDS ARE BASED ON INFORMATION PROVIDED BY THE U.S. COAST GUARD. BUOY LOCATIONS REPRESENT THE POSITION OF THE SINKER ONLY.

SURVEYED BY THE CORPS OF ENGINEERS:
30 OCTOBER 2008 - STATIONS 115+00 TO 130+00
13 NOVEMBER 2008 - STATIONS 34+00 TO 90+00
26 NOVEMBER 2008 - STATIONS 90+64 TO 114+00

SOUNDINGS WERE TAKEN BY FATHOMETER AND ARE SHOWN TO THE NEAREST TENTH OF A FOOT.

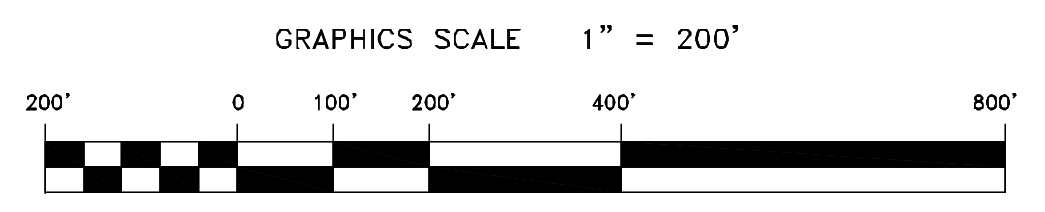
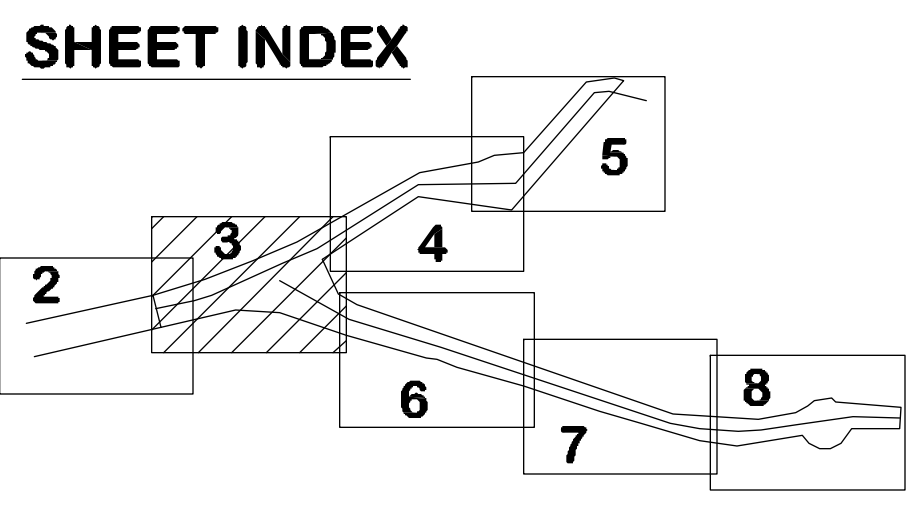
SOUNDINGS ARE BASED ON THE DATUM OF MEAN LOWER LOW WATER AT THE LOCALITY. NAVD 88.

VERTICAL CONTROL
BENCHMARK *MON. 4767A 1964 ELEV. 9.36 FT. MLLW.
BENCHMARK *MON. 4777A 1994 ELEV. 13.67 FT. MLLW.
BENCHMARK *MON. MOLE RM-11 ELEV. 12.36 FT. MLLW.
BENCHMARK *MON. PORT 1 1936 ELEV. 9.36 FT. MLLW.
TIDE GAUGE LOCATION: OAKLAND ARMY BASE, PIER 7, BERTH 40

HORIZONTAL GPS CONTROL
COAST GUARD D-BEACON

PLANE GRID AND COORDINATES ARE BASED ON LAMBERT PROJECTION, NAD 83, ZONE III CALIFORNIA AS DESCRIBED IN SPECIAL PUBLICATION NO. 235, PUBLISHED BY THE NATIONAL OCEAN SURVEY.

PROJECT DEPTH OF OUTER AND INNER HARBOR IS -50 FEET.
PROJECT DEPTH FROM INNER HARBOR TURNING BASIN TO PARK STREET BRIDGE IS 35 FEET.
TIDAL CANAL PROJECT DEPTH IS 18 FEET.



US Army Corps of Engineers
San Francisco District
1455 Market Street
San Francisco, CA 94103

Mark	Description	Date	Appr.

SUBMITTED:	MC	DESIGNED BY:	EMC	CHECKED BY:	PC	DRAWN BY:	PC
Hydro Survey Team Leader		DATE:	12/5/2008	SHEET NO.:	3 OF 8	DRAWING NO.:	2
APPROVAL RECOMMENDED:							XXX
Chief, Technical Support Section		PREPARED UNDER THE DIRECTION OF		LAURENCE M. FARRELL			
APPROVED:		LT. COLONEL, C.E., DISTRICT ENGINEER					
Chief, Construction Branch							

CALIFORNIA
ALAMEDA COUNTY
OAKLAND HARBOR
OUTER HARBOR
POSTIDREGE SURVEY
30 OCTOBER, 13 & 26 NOVEMBER 2008

Sheet reference number
C3