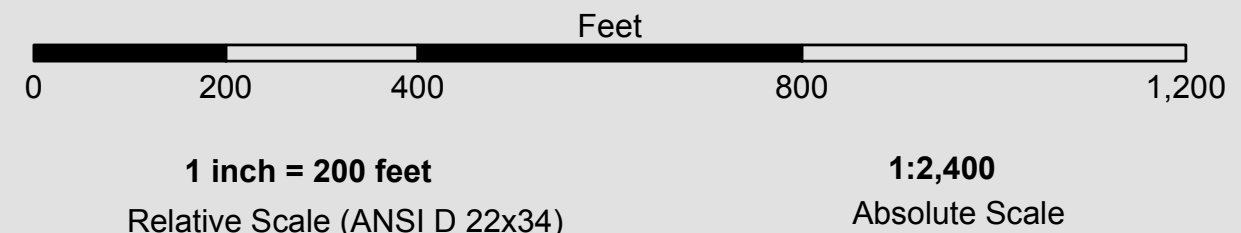


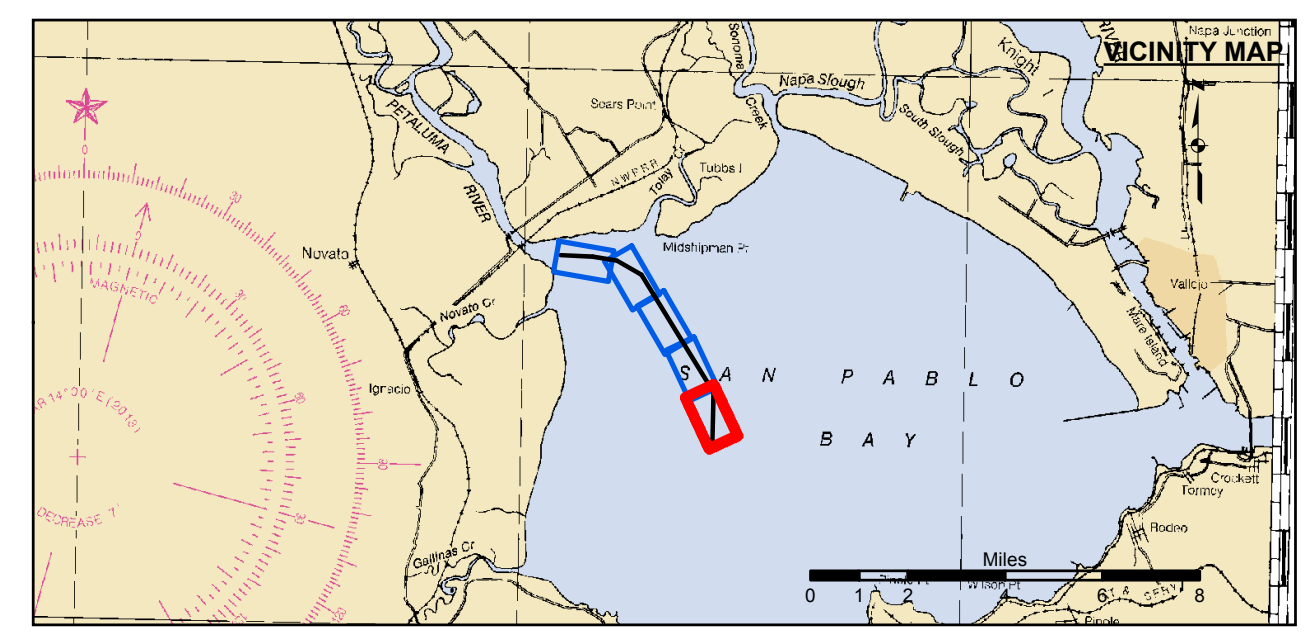
Angle Pt	X	Y
001	60067.82.40	2212407.27
002	60068.10.30	2218195.07
003	59989.98.10	2230943.37
004	59963.34.20	2232481.37
005	59936.81.30	2232908.57
006	59901.86.70	2233072.07

Angle Pt	X	Y
1	60067.82.40	2212407.27
2	60069.10.90	2218222.27
3	59990.70.10	2231017.27
4	59963.68.30	2232577.17
5	59936.97.20	2233007.27
6	59901.91.40	2233171.97
7	59901.82.10	2232972.17
8	59936.65.40	2232809.77
9	59963.00.10	2232385.57
10	59989.26.10	2230869.47
11	60067.09.60	2218167.87
12	60065.82.50	2212411.67

PRELIMINARY ISSUE
THIS PLAN ISSUED FOR
ADVANCE INFORMATION ONLY



← FLOOD
EBB →



Federal Navigation Channel	Beacon, General	Contours
Shoaling Area	Obstruction Point	
Placement Area	Navigation Buoy	-8
Anchorage Area	Navigation Buoy	-7
Wreck Area	Shoalest Sounding*	-6
Submerged Wreck		-5
Angle Point		-4

NOTES:
DRAWING NOT TO BE USED FOR NAVIGATION, ONLY CHANNEL CONDITION AT DATE OF SURVEY. THE LOCATION OF ALL NAVIGATION AIDS ARE BASED ON INFORMATION PROVIDED BY THE U.S. COAST GUARD. BUOY LOCATIONS REPRESENT THE POSITION OF THE SINKER ONLY.
SURVEYED BY THE CORPS OF ENGINEERS.
SOUNDINGS ARE TAKEN BY FATHOMETER AND ARE SHOWN TO THE NEAREST FOOT AND TENTHS OF A FOOT.
SOUNDINGS ARE BASED ON THE DATUM OF MEAN LOWER LOW WATER AT THE LOCALITY.

PLANE GRID, BEARING AND COORDINATES ARE BASED ON THE STATE OF CALIFORNIA COORDINATE SYSTEM, LAMBERT PROJECTION, ZONE III NAD 83, CALIFORNIA, AS DESCRIBED IN SPECIAL PUBLICATION NO. 253, PUBLISHED BY NATIONAL OCEAN SURVEY.
PROJECT DEPTH IS 8 FEET AT M.L.L.W.
SOUNDINGS ARE BASED ON THE TIDE GAUGE LOCATED AT THE CHANNEL MARKER 4,10,16
HORIZONTAL CONTROL: DESIGNATION, SOURCE, XYZ
PRIMARY: RTK GPS VIA VRS NETWORK
SECONDARY: COAST GUARD D-BEACON
VERTICAL CONTROL: BENCHMARK, MMLW ELEV., AGENCY
MON. "UNSTAMPED" USC&GS DISK., SW CONCRETE PIER OF R/R DRAWBRIDGE OVER CREEK., ELEV. 8.88 MLLW AND NAVD 88 DATUM.

US Army Corps of Engineers
San Francisco District
1455 Market Street
San Francisco, CA 94103

DISCLAIMER
The United States Government furnishes no warranty, expressed or implied, concerning the accuracy, completeness, or reliability of any data furnished by the United States Government. The user is responsible for the results of any application of the data for other than its intended purpose. The data represents the results of data collected by the United States Government. The user is responsible for the results of any application of the data for other than its intended purpose. The data represents the results of data collected by the United States Government. The user is responsible for the results of any application of the data for other than its intended purpose.

Prepared Under the Direction of JOHN C. MORROW LT Colonel, C.E. District Engineer	Chart Date: Sep 18, 2014
Submitted by: PDT	Designed by:
Recommended by: Hydro Survey Team Leader	Drawn by: PDT
Checked by: Chief, Hydro Survey Section	Approved by: Chief, Construction Branch

SONOMA COUNTY
PETALUMA ACROSS THE FLAT
CONDITION SURVEY
13-14 SEPTEMBER 2014

Sheet Reference Number
1 of 5