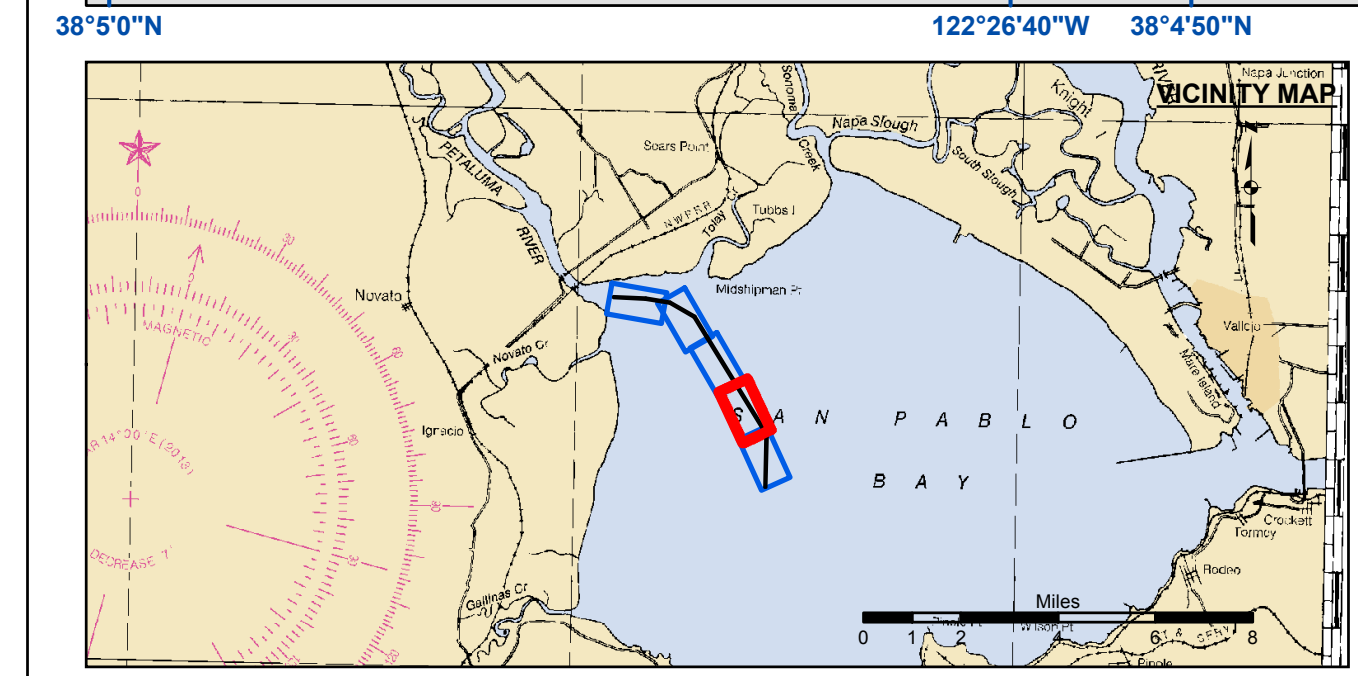
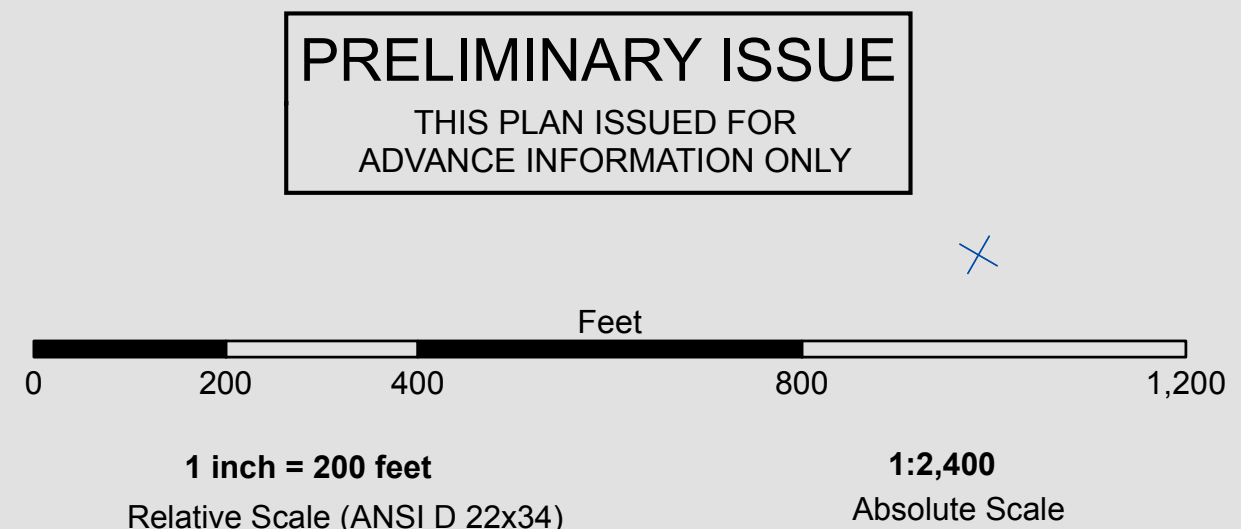


Angle Pt	X	Y
001	6006782.40	2212407.27
002	6006810.30	2218195.07
003	5998898.10	2230943.37
004	5996334.20	2232481.37
005	5993681.30	2232908.57
006	5990186.70	2233072.07

Angle Pt	X	Y
1	6006782.40	2212407.27
2	6006910.90	2218222.27
3	5999070.10	2231017.27
4	5996368.30	2232577.17
5	5993697.20	2233007.27
6	5990191.40	2233171.97
7	5990182.10	2232972.17
8	5993665.40	2232809.77
9	5996300.10	2232385.57
10	5998926.10	2230869.47
11	6006709.60	2218167.87
12	6006582.50	2212411.67



- Federal Navigation Channel
- Shoaling Area
- Placement Area
- Anchorage Area
- Wreck Area
- Submerged Wreck
- Angle Point
- Beacon, General
- Obstruction Point
- Navigation Buoy
- Navigation Buoy
- Shoalest Sounding\*
- Contours**
- 8
- 7
- 6
- 5
- 4

NOTES:  
 DRAWING NOT TO BE USED FOR NAVIGATION, ONLY CHANNEL CONDITION AT DATE OF SURVEY. THE LOCATION OF ALL NAVIGATION AIDS ARE BASED ON INFORMATION PROVIDED BY THE U.S. COAST GUARD. BUOY LOCATIONS REPRESENT THE POSITION OF THE SINKER ONLY.  
 SURVEYED BY THE CORPS OF ENGINEERS.  
 SOUNDINGS ARE TAKEN BY FATHOMETER AND ARE SHOWN TO THE NEAREST FOOT AND TENTHS OF A FOOT.  
 SOUNDINGS ARE BASED ON THE DATUM OF MEAN LOWER LOW WATER AT THE LOCALITY.

PLANE GRID, BEARING AND COORDINATES ARE BASED ON THE STATE OF CALIFORNIA COORDINATE SYSTEM, LAMBERT PROJECTION, ZONE III NAD 83, CALIFORNIA, AS DESCRIBED IN SPECIAL PUBLICATION NO. 253, PUBLISHED BY NATIONAL OCEAN SURVEY.  
 PROJECT DEPTH IS 8 FEET AT M.L.L.W.  
 SOUNDINGS ARE BASED ON THE TIDE GAUGE LOCATED AT THE CHANNEL MARKER 4,10,16  
 HORIZONTAL CONTROL: DESIGNATION, SOURCE, XYZ  
 PRIMARY: RTK GPS VIA VRS NETWORK  
 SECONDARY: COAST GUARD D-BEACON  
 VERTICAL CONTROL: BENCHMARK, MMLW ELEV., AGENCY  
 MON. "UNSTAMPED" USC&GS DISK., SW CONCRETE PIER OF R/R DRAWBRIDGE OVER CREEK., ELEV. 8.88 MLLW AND NAVD 88 DATUM.

US Army Corps of Engineers  
 San Francisco District  
 1455 Market Street  
 San Francisco, CA 94103

**DISCLAIMER**  
 The United States Government furnishes this information as a service to the public. It is not intended to be used for any purpose other than that for which it was prepared. The United States Government makes no warranty, expressed or implied, concerning the accuracy, completeness, or reliability of this information. The user is responsible for the results of any application of the data for other than its intended purpose. These data belong to the Government. Therefore, the recipient may not transfer these data to others without also transferring this disclaimer.

Prepared Under the Direction of:	Chart Date:
LT. COLONEL C.E. MORROW	Sep 18, 2014
Submitted:	Designed by:
PDT	
Recommended:	Checked by:
Chief, Hydro Survey Section	PDT
Approved:	Drawn by:
Chief, Construction Branch	PDT

SONOMA COUNTY  
 CALIFORNIA  
**PETALUMA ACROSS THE FLAT**  
 CONDITION SURVEY  
 13-14 SEPTEMBER 2014

**Sheet Reference Number**  
 2 of 5