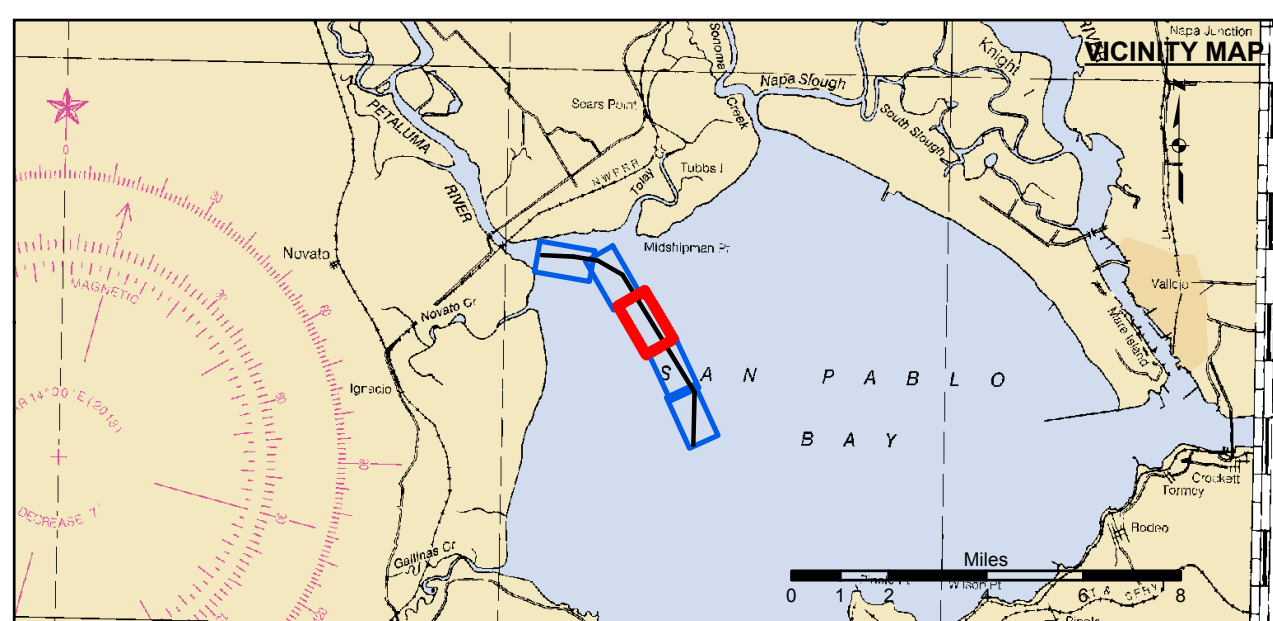
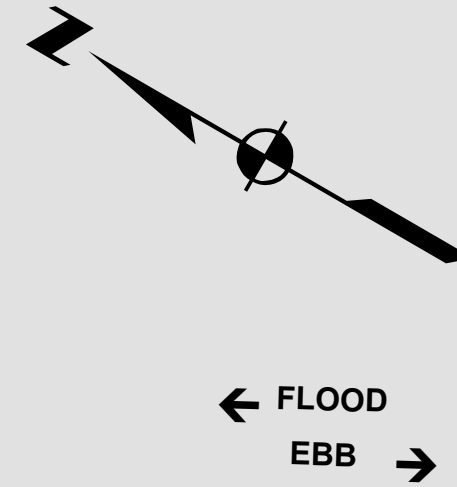
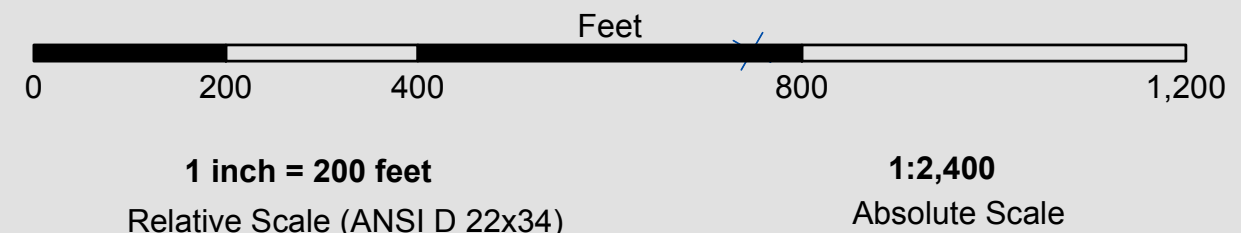


Angle Pt	X	Y
001	6006782.40	2212407.27
002	6006810.30	2218195.07
003	5998898.10	2230943.37
004	5996334.20	2232481.37
005	5993681.30	2232908.57
006	5990186.70	2233072.07

Angle Pt	X	Y
1	6006782.40	2212407.27
2	6006910.90	2218222.27
3	5999070.10	2231017.27
4	5996368.30	2232577.17
5	5993697.20	2233007.27
6	5990191.40	2233171.97
7	5990182.10	2232972.17
8	5993665.40	2232809.77
9	5996300.10	2232385.57
10	5998926.10	2230869.47
11	6006709.60	2218167.87
12	6006582.50	2212411.67

PRELIMINARY ISSUE
THIS PLAN ISSUED FOR
ADVANCE INFORMATION ONLY



Federal Navigation Channel	Beacon, General	Contours
Shoaling Area	Obstruction Point	
Placement Area	Navigation Buoy	-8
Anchorage Area	Navigation Buoy	-7
Wreck Area	Shoalest Sounding*	-6
Submerged Wreck		-5
Angle Point		-4

NOTES:
DRAWING NOT TO BE USED FOR NAVIGATION. ONLY CHANNEL CONDITION AT DATE OF SURVEY. THE LOCATION OF ALL NAVIGATION AIDS ARE BASED ON INFORMATION PROVIDED BY THE U.S. COAST GUARD. BUOY LOCATIONS REPRESENT THE POSITION OF THE SINKER ONLY.
SURVEYED BY THE CORPS OF ENGINEERS.
SOUNDINGS ARE TAKEN BY FATHOMETER AND ARE SHOWN TO THE NEAREST FOOT AND TENTHS OF A FOOT.
SOUNDINGS ARE BASED ON THE DATUM OF MEAN LOWER LOW WATER AT THE LOCALITY.

PLANE GRID, BEARING AND COORDINATES ARE BASED ON THE STATE OF CALIFORNIA COORDINATE SYSTEM, LAMBERT PROJECTION, ZONE III NAD 83, CALIFORNIA, AS DESCRIBED IN SPECIAL PUBLICATION NO. 253, PUBLISHED BY NATIONAL OCEAN SURVEY.
PROJECT DEPTH IS 8 FEET AT M.L.L.W.
SOUNDINGS ARE BASED ON THE TIDE GAUGE LOCATED AT THE CHANNEL MARKER 4,10,16
HORIZONTAL CONTROL: DESIGNATION, SOURCE, XYZ
PRIMARY: RTK GPS VIA VRS NETWORK
SECONDARY: COAST GUARD D-BEACON
VERTICAL CONTROL: BENCHMARK, MMLW ELEV., AGENCY
MON. "UNSTAMPED" USC&GS DISK., SW CONCRETE PIER OF R/R DRAWBRIDGE OVER CREEK., ELEV. 8.86 MLLW AND NAVD 88 DATUM.



DISCLAIMER
The United States Government furnishes this information as a service to the public. It is not intended to be used for navigation or other purposes. The user is responsible for the results of any application of the data for other than its intended purpose. The data represents the results of data collected by the Corps of Engineers. Engineers activity and indicates the general conditions. As such, it is only valid for its intended use, content, time and accuracy specifications. The user is responsible for the results of any application of the data for other than its intended purpose.

Chart Date:	Sep 18, 2014
Surveyed By:	JOHN C. MORROW
Plotted By:	PDT
Designed by:	
Drawn by:	PDT
Checked By:	PDT
Approved:	

SONOMA COUNTY
CALIFORNIA
PETALUMA ACROSS THE FLAT
CONDITION SURVEY
13-14 SEPTEMBER 2014

Sheet Reference Number
3 of 5