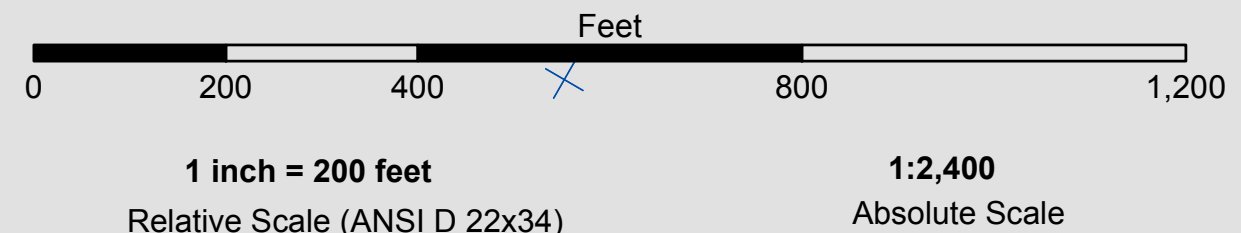


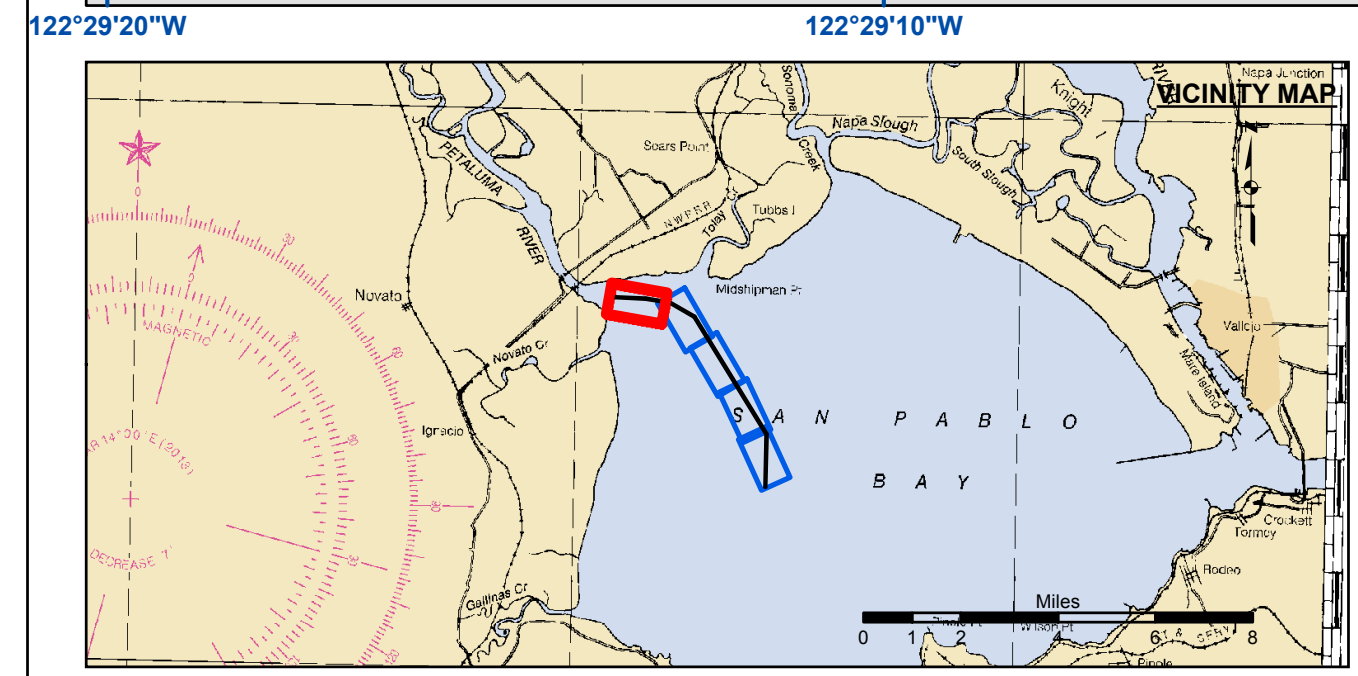
| Angle Pt | X | Y |
|----------|------------|------------|
| 001 | 6006782.40 | 2212407.27 |
| 002 | 6006810.30 | 2218195.07 |
| 003 | 5998998.10 | 2230943.37 |
| 004 | 5996334.20 | 2232481.37 |
| 005 | 5993681.30 | 2232908.57 |
| 006 | 5990186.70 | 2233072.07 |

| Angle Pt | X | Y |
|----------|------------|------------|
| 1 | 6006782.40 | 2212407.27 |
| 2 | 6006910.90 | 2218222.27 |
| 3 | 5999070.10 | 2231017.27 |
| 4 | 5996368.30 | 2232577.17 |
| 5 | 5993697.20 | 2233007.27 |
| 6 | 5990191.40 | 2233171.97 |
| 7 | 5990182.10 | 2232972.17 |
| 8 | 5993665.40 | 2232809.77 |
| 9 | 5996300.10 | 2232385.57 |
| 10 | 5998926.10 | 2230869.47 |
| 11 | 6006709.60 | 2218167.87 |
| 12 | 6006582.50 | 2212411.67 |

PRELIMINARY ISSUE
THIS PLAN ISSUED FOR
ADVANCE INFORMATION ONLY



← FLOOD
EBB →



| | | |
|----------------------------|--------------------|-----------------|
| Federal Navigation Channel | Beacon, General | Contours |
| Shoaling Area | Obstruction Point | |
| Placement Area | Navigation Buoy | — -8 |
| Anchorage Area | Navigation Buoy | — -7 |
| Wreck Area | Shoalest Sounding* | — -6 |
| Submerged Wreck | | — -5 |
| Angle Point | | — -4 |

NOTES:
DRAWING NOT TO BE USED FOR NAVIGATION. ONLY CHANNEL CONDITION AT DATE OF SURVEY. THE LOCATION OF ALL NAVIGATION AIDS ARE BASED ON INFORMATION PROVIDED BY THE U.S. COAST GUARD. BUOY LOCATIONS REPRESENT THE POSITION OF THE SINKER ONLY.
SURVEYED BY THE CORPS OF ENGINEERS.
SOUNDINGS ARE TAKEN BY FATHOMETER AND ARE SHOWN TO THE NEAREST FOOT AND TENTHS OF A FOOT.
SOUNDINGS ARE BASED ON THE DATUM OF MEAN LOWER LOW WATER AT THE LOCALITY.
PLANE GRID, BEARING AND COORDINATES ARE BASED ON THE STATE OF CALIFORNIA COORDINATE SYSTEM, LAMBERT PROJECTION, ZONE III NAD 83, CALIFORNIA, AS DESCRIBED IN SPECIAL PUBLICATION NO. 253, PUBLISHED BY NATIONAL OCEAN SURVEY.
PROJECT DEPTH IS 8 FEET AT M.L.L.W.
SOUNDINGS ARE BASED ON THE TIDE GAUGE LOCATED AT THE CHANNEL MARKER 4,10,16
HORIZONTAL CONTROL: DESIGNATION, SOURCE, XYZ
PRIMARY: RTK GPS VIA VRS NETWORK
SECONDARY: COAST GUARD D-BEACON
VERTICAL CONTROL: BENCHMARK, MMLW ELEV., AGENCY
MON. "UNSTAMPED" USC&GS DISK., SW CONCRETE PIER OF R/R DRAWBRIDGE OVER CREEK., ELEV. 8.88 MLLW AND NAVD 88 DATUM.

US Army Corps of Engineers
San Francisco District
1455 Market Street
San Francisco, CA 94103

DISCLAIMER
The United States Government furnishes this information as a service to the public. It is not intended to be used for any purpose other than that for which it was prepared. The United States Government makes no warranty, expressed or implied, concerning the accuracy, completeness, or timeliness of the information. The user is responsible for the results of any application of the data for other than its intended purpose. These data belong to the Government. Therefore the recipient may not transfer these data to others without also transferring this disclaimer.

| | |
|--|-----------------------------|
| Prepared Under the Direction of JOHN C. MORROW LT. COLONEL, C.E., DISTRICT ENGINEER | Chart Date: Sep 18, 2014 |
| Submitted by: PDT | Designed by: |
| Recommended by: Hydro Survey Team Leader | Drawn by: PDT |
| Approved by: Chief, Hydro Survey Section | Checked by: PDT |
| Approved by: Chief, Construction Branch | |

SONOMA COUNTY
PETALUMA ACROSS THE FLAT
CONDITION SURVEY
13-14 SEPTEMBER 2014

Sheet Reference Number
5 of 5