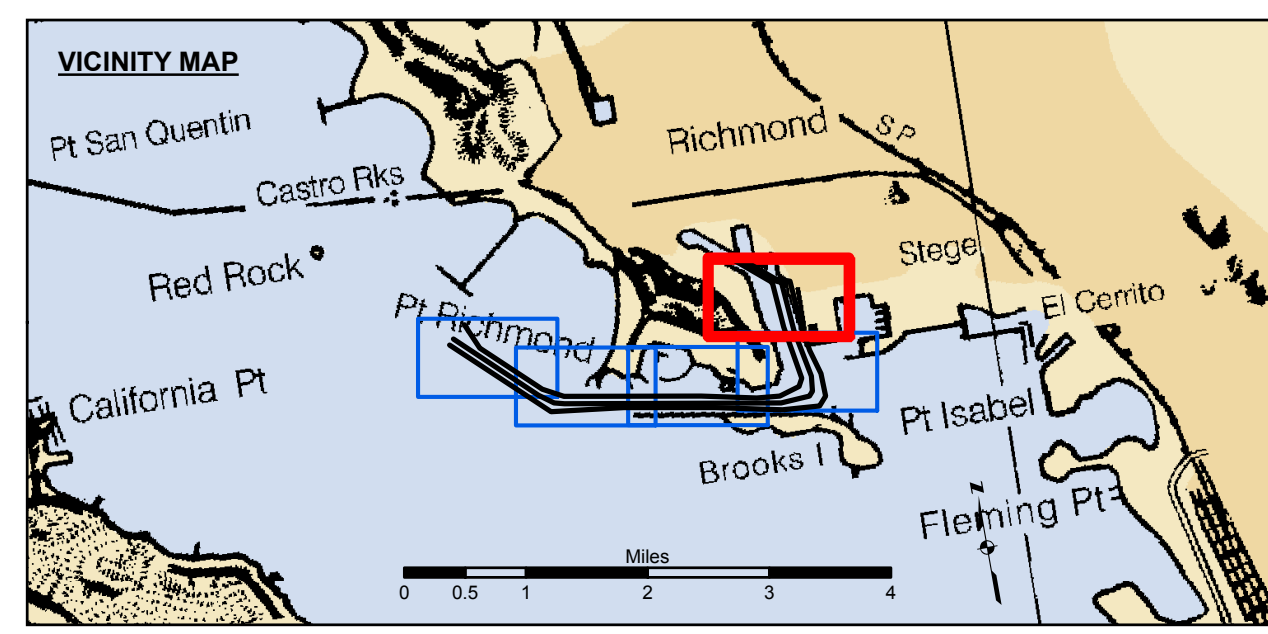


**US Army Corps of Engineers**  
 San Francisco District  
 1455 Market Street  
 San Francisco, CA 94103

**DISCLAIMER**  
 The United States Government furnishes this information as a service to the public and does not warrant, express or implied, the accuracy, completeness, or reliability of the information. The user assumes all liability for any use of the information, including any reproduction, distribution, or disclosure, without the express written consent of the United States Government. The user shall indemnify and hold the United States Government harmless from any and all claims, damages, and expenses, including reasonable attorneys' fees, that may be incurred by the United States Government as a result of the user's use of the information. This disclaimer applies to all users of the information, whether or not they are acting in an official capacity.

Chart Date:	Sep 10, 2014
Surveyed By:	PDT
Plotted By:	PDT
Designed by:	PDT
Checked By:	PDT
Drawn by:	PDT
Approved:	Chief, Construction Branch



Federal Navigation Channel	Beacon, General	<b>Contours</b>
Shoaling Area	Obstruction Point	-38
Placement Area	Navigation Buoy	-37
Anchorage Area	Navigation Buoy	-36
Wreck Area	Shoalest Sounding*	-35
Submerged Wreck		-34
Angle Point		

**NOTES:**  
 HORIZONTAL COORDINATE SYSTEM: NORTH AMERICAN DATUM OF 1983 (NAD83), PROJECTED TO THE STATE PLANE COORDINATE SYSTEM (SPCS), CALIFORNIA ZONE III. DISTANCE UNITS IN U.S. SURVEY FEET.  
 VERTICAL DATUM: SOUNDINGS ARE SHOWN IN FEET AND INDICATE DEPTHS BELOW MEAN LOWER LOW WATER.  
 THE INFORMATION DEPICTED ON THIS MAP REPRESENTS THE RESULTS OF A SURVEY CONDUCTED ON THE DATE INDICATED AND CAN ONLY BE CONSIDERED TO REPRESENT THE GENERAL CONDITION EXISTING AT THAT TIME.  
 \*SHOALEST SOUNDING PER QUARTER PER REACH

DRAWING NOT TO BE USED FOR NAVIGATION. ONLY CHANNEL CONDITION AT DATE OF SURVEY. THE LOCATION OF ALL NAVIGATION AIDS ARE BASED ON INFORMATION PROVIDED BY THE U.S. COAST GUARD BUOY LOCATION REPRESENT THE POSITION OF THE SINKER ONLY.

SOUNDINGS WERE TAKEN BY FATHOMETER AND ARE SHOWN TO THE NEAREST TENTH OF A FOOT. SOUNDINGS ARE BASED ON THE DATUM OF MEAN LOWER LOW WATER AT THE LOCALITY.

BASE MAPS ARE USDA NAIP 2010.

THE PROJECT DEPTHS ARE AS FOLLOWS:  
 INNER HARBOR CHANNEL -37.5 FEET.  
 SANTE FE CHANNEL -30 FEET.

(INNER HARBOR CHANNEL) BENCHMARK A-558 ELEV 15.81 FT. MLLW.  
 BENCHMARK #2 (1032) USCGS DISK OLD FORD PLANT 16.0825 FT. MLLW.  
 B.M. LS 2769 CITY OF RICHMOND DISK PAVEMENT 13.971 FT. MLLW.

TIDE GAGE LOCATION: MON B-1.  
 HORIZONTAL GPS CONTROL: COAST GUARD D-BEACON.  
 VERTICAL CONTROL: BENCHMARK, MLLW ELEV., AGENCY

ALAMEDA COUNTY  
**RICHMOND INNER HARBOR**  
 CONDITION SURVEY  
 07 SEPTEMBER 2014

**Sheet Reference Number**  
 5 of 5