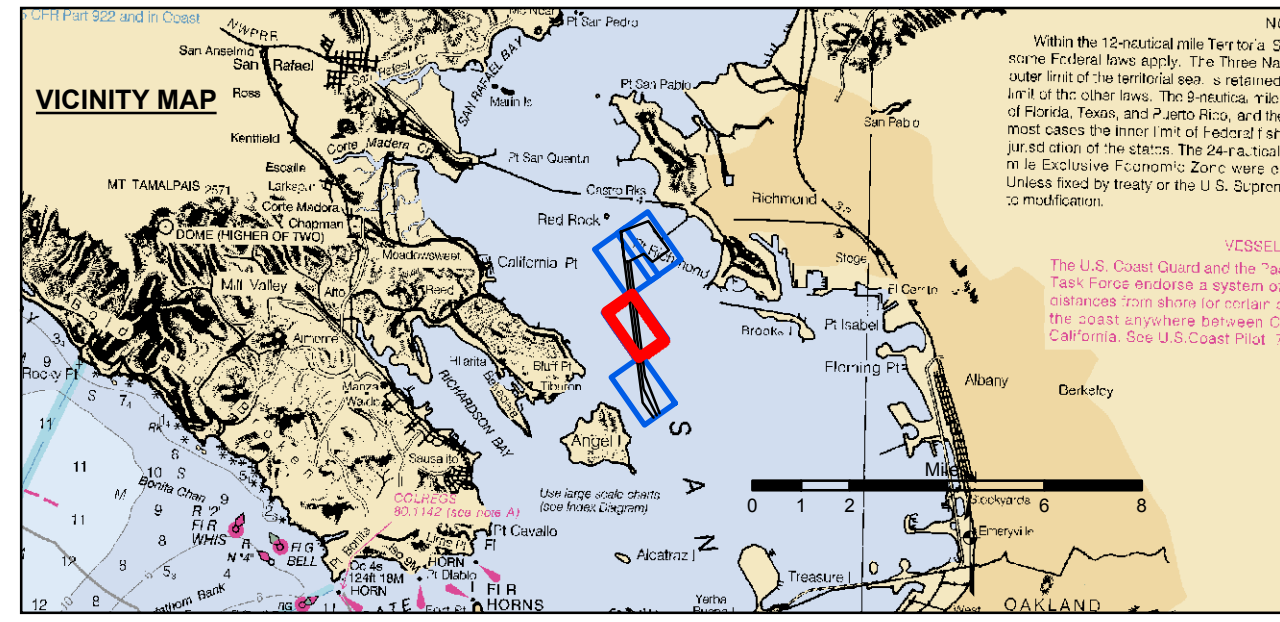


US Army Corps of Engineers
 San Francisco District
 1455 Market Street
 San Francisco, CA 94103

DISCLAIMER
 The United States Government furnishes this information as a public service. It is not intended to be used for any purpose other than that intended by the Government. The user is responsible for the results of any application of the data for other than its intended purpose. The Government makes no warranty, expressed or implied, concerning the accuracy, completeness, or reliability of the data. The Government shall not be liable for any damages, including consequential damages, arising from the use of the data. These data belong to the Government. Therefore, the user shall not transfer these data to others without also transferring this disclaimer.

Chart Date:	08 JULY 2014
Designed by:	PDT
Surveyed By:	JOHN C. MORROW
Plotted By:	PDT
Recommended:	Chief, Hydro Survey Section
Checked By:	PDT
Approved:	Chief, Construction Branch
Drawn by:	PDT

CALIFORNIA
 RICHMOND OUTER HARBOR
 SOUTHAMPTON SHOALS
 PREDREDGE SURVEY
 26 - 27 JUNE 2014



- Federal Navigation Channel
- Shoaling Area
- Placement Area
- Anchorage Area
- Wreck Area
- Submerged Wreck
- Angle Point
- Beacon, General
- Obstruction Point
- Navigation Buoy
- Navigation Buoy
- Shoalest Sounding*

NOTES:
 HORIZONTAL COORDINATE SYSTEM:
 NORTH AMERICAN DATUM OF 1983 (NAD83), PROJECTED TO THE STATE PLANE COORDINATE SYSTEM (SPCS), CALIFORNIA ZONE III. DISTANCE UNITS IN U.S. SURVEY FEET.
 VERTICAL DATUM:
 SOUNDINGS ARE SHOWN IN FEET AND INDICATE DEPTHS BELOW MEAN LOWER LOW WATER.
 THE INFORMATION DEPICTED ON THIS MAP REPRESENTS THE RESULTS OF A SURVEY CONDUCTED ON THE DATE INDICATED AND CAN ONLY BE CONSIDERED TO REPRESENT THE GENERAL CONDITION EXISTING AT THAT TIME.
 SHOALEST SOUNDING PER QUARTER PER REACH
 DRAWING NOT TO BE USED FOR NAVIGATION.
 ONLY CHANNEL CONDITION AT DATE OF SURVEY.
 THE LOCATION OF ALL NAVIGATION AIDS ARE BASED ON INFORMATION PROVIDED BY THE U.S. COAST GUARD. BUOY LOCATION REPRESENT THE POSITION OF THE SINKER ONLY.
 SURVEYED BY THE CORPS OF ENGINEERS.
 SOUNDINGS WERE TAKEN BY FATHOMETER AND ARE SHOWN TO THE NEAREST TENTH OF A FOOT.

SOUNDINGS ARE BASED ON THE DATUM OF MEAN LOWER LOW WATER AT THE LOCALITY, NAVD 88.
 BASE MAPS ARE USDA NAIP 2010.
 THE PROJECT DEPTHS ARE AS FOLLOWS:
 SOUTHAMPTON SHOALS CHANNEL -46 FEET.
 LONG WHARF MANEUVERING AREA -45 FEET.
 1:00 INDICATED THE NUMBER AND BEGINNING OF A LINE OF SOUNDINGS.
 VERTICAL CONTROL
 (SOUTHAMPTON SHOALS & LONG WHARF MANEUVERING) BENCHMARK *10° 1937 ELEV 15.86 FT. MLLW.
 AND BENCHMARK *11° 1946 ELEV 15.47 FT. MLLW.
 TIDE GAUGE LOCATED AT TIBURON NET DEPOT.
 CONTROL
 HORIZONTAL POSITIONING: COAST GUARD DGPS
 VERTICAL TIDES: INTERPOLATED FROM NOAA ONLINE TIDE STATIONS:
 941 4863 - RICHMOND, CA
 941 4290 - SAN FRANCISCO, CA

PRELIMINARY ISSUE
 THIS PLAN ISSUED FOR
 ADVANCE INFORMATION ONLY

Sheet Reference Number
 2 of 4