

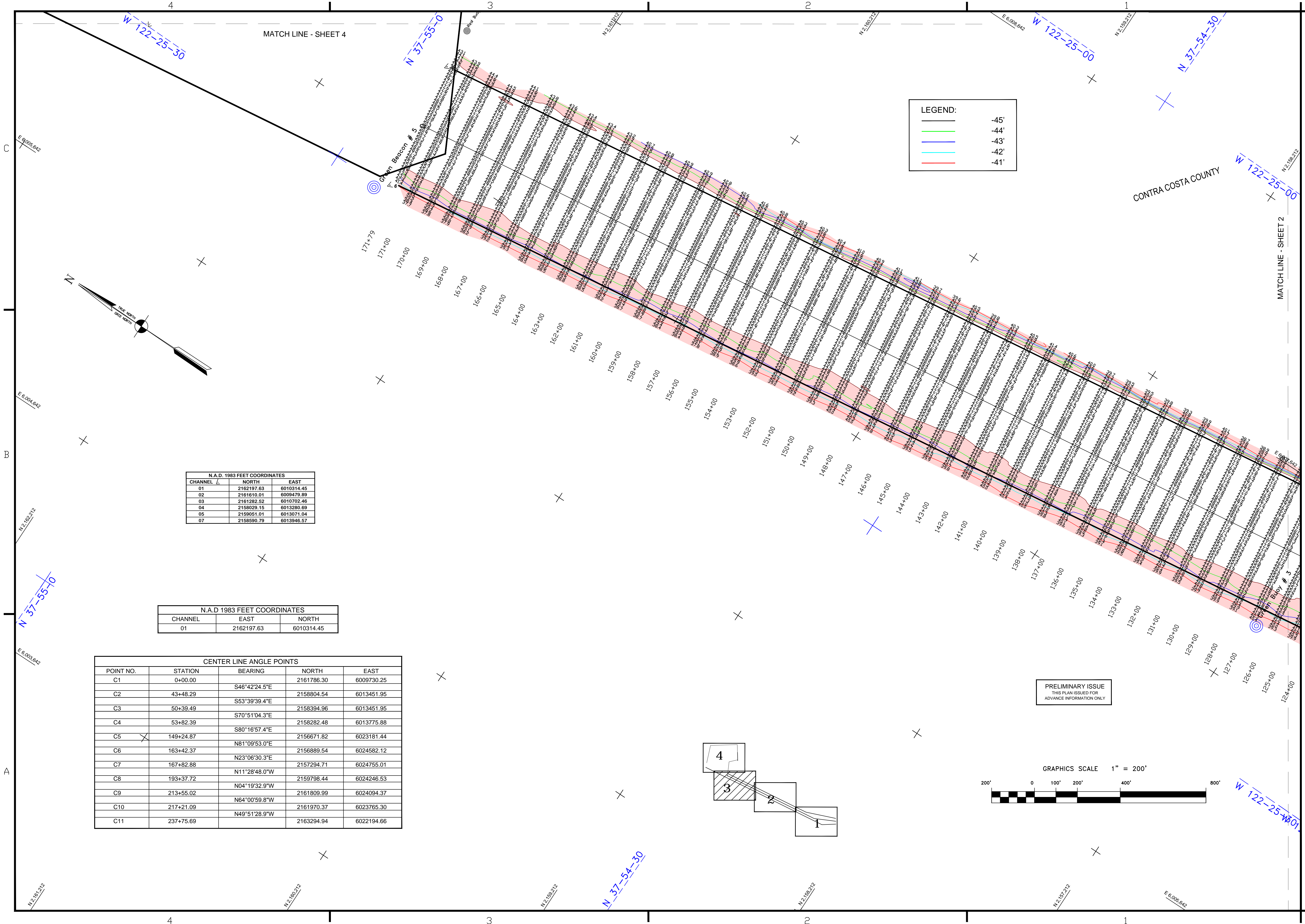
--	--

Mark	Description	Date	Appr.

DESIGNED BY:	PDT	CHECKED BY:	PDT	DRAWN BY:	PDT
DATE:	8/3/2015	DATE:	8/3/2015	DATE:	8/3/2015
APPROVAL RECOMMENDED:	CHIEF, Hydro Survey Section	APPROVAL RECOMMENDED:	CHIEF, Hydro Survey Section	APPROVAL RECOMMENDED:	CHIEF, Hydro Survey Section
APPROVED:		APPROVED:		APPROVED:	

CALIFORNIA
 CONTRA COSTA COUNTY
 RICHMOND OUTER HARBOR
 SOUTHAMPTON SHOAL
 CONDITION SURVEY
 28 JULY 2015

Sheet reference number
C3



LEGEND:

(Black line)	-45'
(Green line)	-44'
(Blue line)	-43'
(Cyan line)	-42'
(Red line)	-41'

N.A.D. 1983 FEET COORDINATES

CHANNEL	NORTH	EAST
01	2162197.63	6010314.45
02	2161610.01	6009479.89
03	2161282.52	6010702.46
04	2158029.15	6013280.99
05	2159051.01	6013071.04
07	2158590.79	6013946.57

N.A.D. 1983 FEET COORDINATES

CHANNEL	EAST	NORTH
01	2162197.63	6010314.45

CENTER LINE ANGLE POINTS

POINT NO.	STATION	BEARING	NORTH	EAST
C1	0+00.00	S46°42'24.5"E	2161786.30	6009730.25
C2	43+48.29	S53°39'39.4"E	2158804.54	6013451.95
C3	50+39.49	S70°51'04.3"E	2158394.96	6013451.95
C4	53+82.39	S80°16'57.4"E	215671.82	6023181.44
C5	149+24.87	N81°09'53.0"E	2156889.54	6024582.12
C6	163+42.37	N23°06'30.3"E	2157294.71	6024755.01
C7	167+82.88	N11°28'48.0"W	2159798.44	6024246.53
C8	193+37.72	N04°19'32.9"W	2161809.99	6024094.37
C9	213+55.02	N64°00'59.8"W	2161970.37	6023765.30
C10	217+21.09	N49°51'28.9"W	2163294.94	6022194.66
C11	237+75.69			

PRELIMINARY ISSUE
 THIS PLAN ISSUED FOR
 ADVANCE INFORMATION ONLY

