

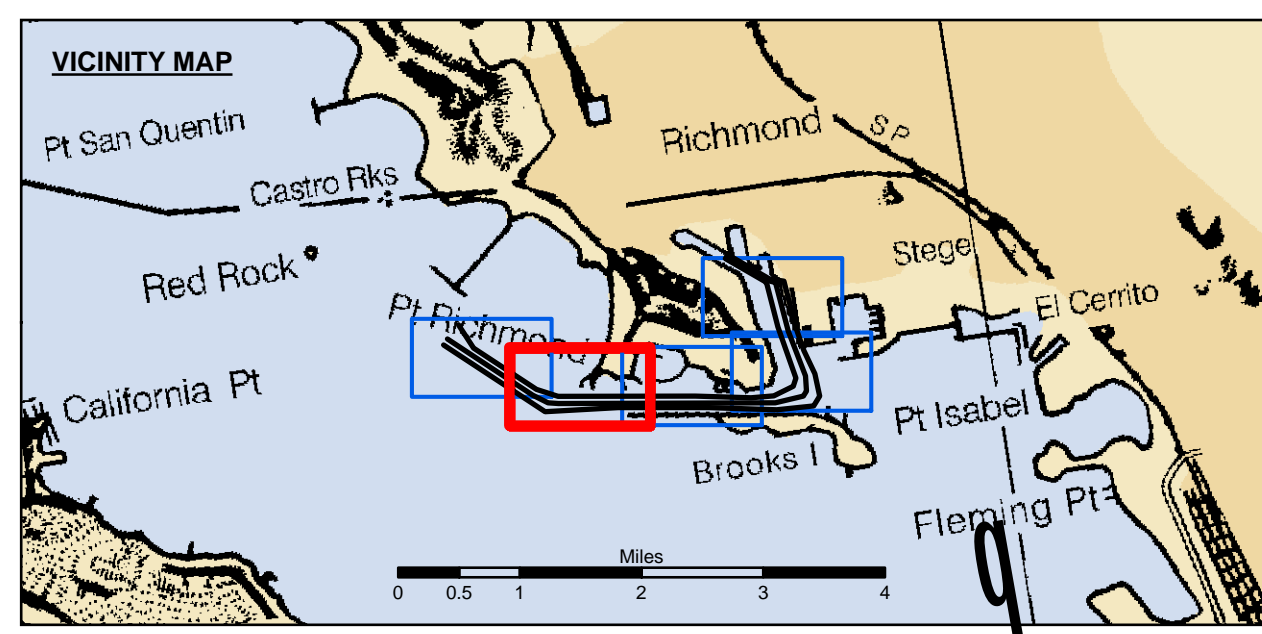
**PRELIMINARY ISSUE**  
THIS PLAN ISSUED FOR  
ADVANCE INFORMATION ONLY

**US Army Corps of Engineers**  
San Francisco District  
1455 Market Street  
San Francisco, CA 94103

**DISCLAIMER**  
The United States Government furnishes this information for the use of the recipient in accordance with the terms of the license agreement. The recipient may not transfer these data to others without also transferring this disclaimer. The data represents the results of data collected by the United States Government. The data is not intended for use in any other manner than the intended purpose. The user is responsible for the results of any application of the data for other than the intended purpose. The United States Government makes no warranty, expressed or implied, concerning the accuracy, completeness, or reliability of any information furnished hereunder. The United States Government shall not be liable for any damages, including any general or special damages, or any consequential or incidental damages, arising out of the use of the information furnished hereunder. These data belong to the Government. Therefore, the recipient may not transfer these data to others without also transferring this disclaimer.

Prepared Under the Direction of <b>JOHN C. MORROW</b> LT Colonel, C.E., District Engineer	Surveyed By: PDT	Chart Date: Jul 28, 2015
Submitted: Hydro Survey Team Leader	Plotted By: PDT	Designed by: PDT
Recommended: Chief, Hydro Survey Section	Checked By: PDT	Drawn by: PDT
Approved: Chief, Construction Branch		

ALAMEDA COUNTY  
**RICHMOND INNER HARBOR**  
CONDITION SURVEY  
23-24 JULY 2015



Federal Navigation Channel	Beacon, General	<b>Contours</b>
Shoaling Area	Obstruction Point	-38
Placement Area	Navigation Buoy	-37
Anchorage Area	Navigation Buoy	-36
Wreck Area	Shoalest Sounding*	-35
Submerged Wreck		-34
Angle Point		

**NOTES:**  
HORIZONTAL CONTROL: COAST AND GEODETIC SURVEY, NORTH AMERICAN DATUM OF 1983 (NAD83), PROJECTED TO THE STATE PLANE COORDINATE SYSTEM (SPCS), CALIFORNIA ZONE III. DISTANCE UNITS IN U.S. SURVEY FEET.  
VERTICAL DATUM: SOUNDINGS ARE SHOWN IN FEET AND INDICATE DEPTHS BELOW MEAN LOWER LOW WATER.  
THE INFORMATION DEPICTED ON THIS MAP REPRESENTS THE RESULTS OF A SURVEY CONDUCTED ON THE DATE INDICATED AND CAN ONLY BE CONSIDERED TO REPRESENT THE GENERAL CONDITION EXISTING AT THAT TIME.  
\*SHOALEST SOUNDING PER QUARTER PER REACH

DRAWING NOT TO BE USED FOR NAVIGATION.  
ONLY CHANNEL CONDITION AT DATE OF SURVEY.  
THE LOCATION OF ALL NAVIGATION AIDS ARE BASED ON INFORMATION PROVIDED BY THE U.S. COAST GUARD BUOY LOCATION REPRESENT THE POSITION OF THE SINKER ONLY.

SURVEYED BY THE CORPS OF ENGINEERS.  
SOUNDINGS WERE TAKEN BY FATHOMETER AND ARE SHOWN TO THE NEAREST TENTH OF A FOOT.  
SOUNDINGS ARE BASED ON THE DATUM OF MEAN LOWER LOW WATER AT THE LOCALITY.

BASE MAPS ARE USDA NAIP 2010.  
THE PROJECT DEPTHS ARE AS FOLLOWS:  
INNER HARBOR CHANNEL - 37.5 FEET.  
SANTE FE CHANNEL - 30 FEET.

(INNER HARBOR CHANNEL) BENCHMARK A-556 ELEV 15.81 FT. MLLW.  
BENCHMARK #2 (1032) USCGS DISK OLD FORD PLANT 16.0825 FT. MLLW.  
B.M. LS 2769 CITY OF RICHMOND DISK PAVEMENT 13.971 FT. MLLW.

TIDE GAGE LOCATION: MON B-1.  
HORIZONTAL GPS CONTROL: COAST GUARD D-BEACON.  
VERTICAL CONTROL: BENCHMARK, MLLW ELEV., AGENCY

**Sheet Reference Number**  
**2 of 5**