

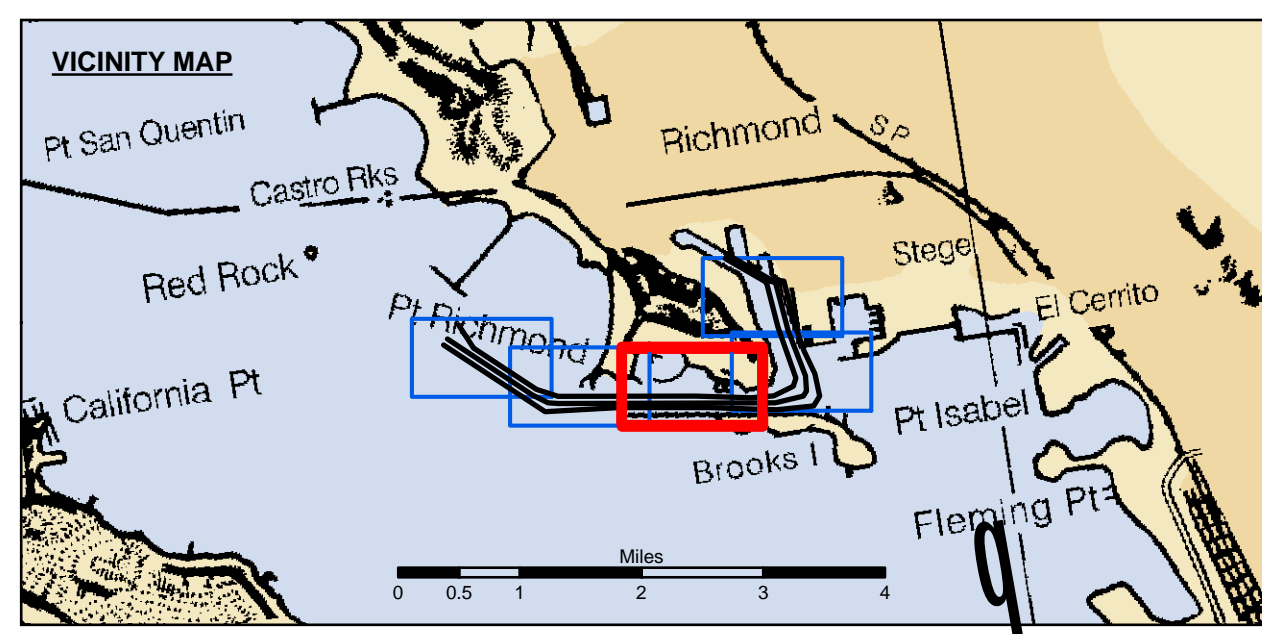
US Army Corps of Engineers
 San Francisco District
 1455 Market Street
 San Francisco, CA 94103

DISCLAIMER
 The United States Government furnishes this information as a public service and does not warrant, express or implied, the accuracy, completeness, or reliability of the information. The user is responsible for the results of any application of the data for other than the intended purpose. The user shall indemnify and hold the United States Government harmless from any and all claims, damages, and expenses, including reasonable attorneys' fees, that may be incurred by the United States Government as a result of the use of this information. The user shall not transfer these data to others without also transferring this disclaimer.

Chart Date:	Jul 28, 2015
Designed by:	PDT
Surveyed By:	PDT
Plotted By:	PDT
Checked By:	PDT
Drawn by:	PDT

ALAMEDA COUNTY
 RICHMOND INNER HARBOR
 CONDITION SURVEY
 23-24 JULY 2015

Sheet
 Reference
 Number
3 of 5



Federal Navigation Channel	Beacon, General	Contours
Shoaling Area	Obstruction Point	-38
Placement Area	Navigation Buoy	-37
Anchorage Area	Navigation Buoy	-36
Wreck Area	Navigation Buoy	-35
Submerged Wreck	Shoalest Sounding*	-34
Angle Point		

NOTES:
 HORIZONTAL COORDINATE SYSTEM:
 NORTH AMERICAN DATUM OF 1983 (NAD83), PROJECTED TO THE STATE PLANE COORDINATE SYSTEM (SPCS), CALIFORNIA ZONE III. DISTANCE UNITS IN U.S. SURVEY FEET.
 VERTICAL DATUM:
 SOUNDINGS ARE SHOWN IN FEET AND INDICATE DEPTHS BELOW MEAN LOWER LOW WATER.
 THE INFORMATION DEPICTED ON THIS MAP REPRESENTS THE RESULTS OF A SURVEY CONDUCTED ON THE DATE INDICATED AND CAN ONLY BE CONSIDERED TO REPRESENT THE GENERAL CONDITION EXISTING AT THAT TIME.
 *SHOALEST SOUNDING PER QUARTER PER REACH

DRAWING NOT TO BE USED FOR NAVIGATION.
 ONLY CHANNEL CONDITION AT DATE OF SURVEY.
 THE LOCATION OF ALL NAVIGATION AIDS ARE BASED ON INFORMATION PROVIDED BY THE U.S. COAST GUARD BUOY LOCATION REPRESENT THE POSITION OF THE SINKER ONLY.

SURVEYED BY THE CORPS OF ENGINEERS.
 SOUNDINGS WERE TAKEN BY FATHOMETER AND ARE SHOWN TO THE NEAREST TENTH OF A FOOT.
 SOUNDINGS ARE BASED ON THE DATUM OF MEAN LOWER LOW WATER AT THE LOCALITY.
 BASE MAPS ARE USDA NAIP 2010.

THE PROJECT DEPTHS ARE AS FOLLOWS:
 INNER HARBOR CHANNEL - 37.5 FEET.
 SANTE FE CHANNEL - 30 FEET.

(INNER HARBOR CHANNEL) BENCHMARK A-556 ELEV 15.81 FT. MLLW.
 BENCHMARK #2 (1032) USCGS DISK OLD FORD PLANT 16.025 FT. MLLW.
 B.M. LS 2769 CITY OF RICHMOND DISK PAVEMENT 13.971 FT. MLLW.

TIDE GAGE LOCATION: MON B-1.
 HORIZONTAL GPS CONTROL: COAST GUARD D-BEACON.
 VERTICAL CONTROL: BENCHMARK, MLLW ELEV., AGENCY