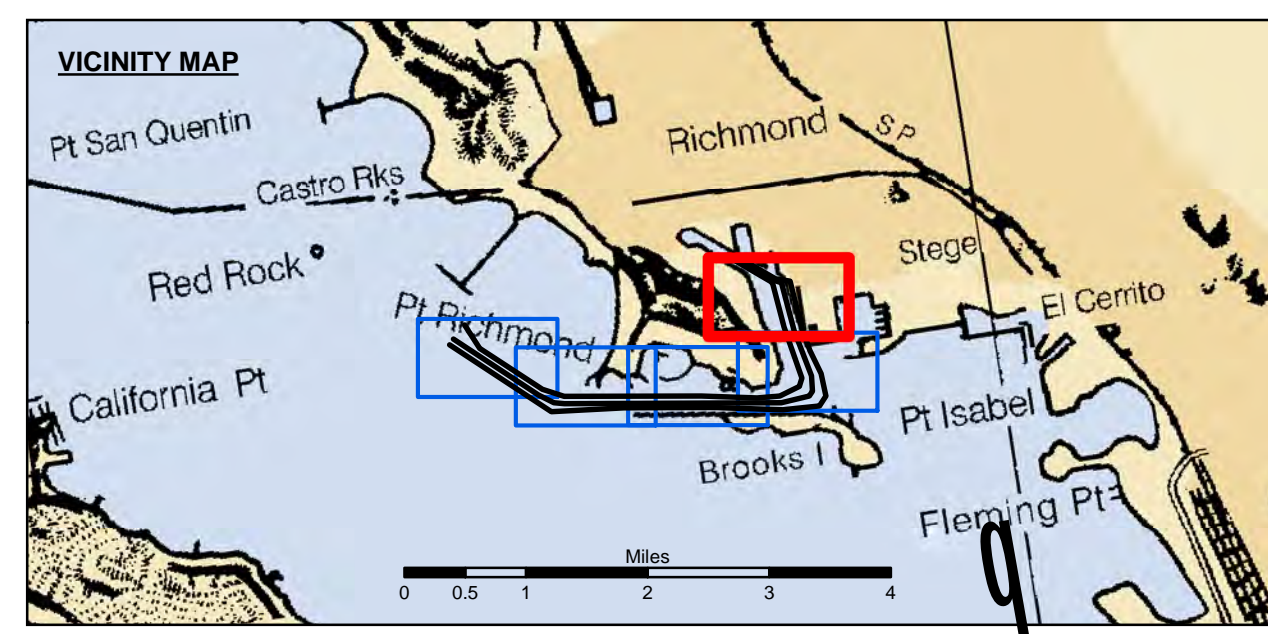


US Army Corps of Engineers
 San Francisco District
 1455 Market Street
 San Francisco, CA 94103

DISCLAIMER
 The United States Government furnishes this information as a public service. It is not intended to be used for any purpose other than that for which it was prepared. The user is responsible for the results of any application of the data for other than the intended purpose. The user is responsible for the results of any application of the data for other than the intended purpose. The user is responsible for the results of any application of the data for other than the intended purpose.

Chart Date:	Apr 04, 2016
Designed by:	PDT
Drawn by:	PDT
Checked by:	PDT
Approved:	Chief, Construction Branch
Surveyed By:	Plotted By:
Plotted By:	PDT
Checked By:	PDT
Approved:	Chief, Construction Branch



Federal Navigation Channel	Beacon, General	Contours
Shoaling Area	Obstruction Point	-38
Placement Area	Navigation Buoy	-37
Anchorage Area	Navigation Buoy	-36
Wreck Area	Shoalest Sounding*	-35
Submerged Wreck		-34
Angle Point		

NOTES:
 HORIZONTAL COORDINATE SYSTEM: NORTH AMERICAN DATUM OF 1983 (NAD83), PROJECTED TO THE STATE PLANE COORDINATE SYSTEM (SPCS), CALIFORNIA ZONE III. DISTANCE UNITS IN U.S. SURVEY FEET.
 VERTICAL DATUM: SOUNDINGS ARE SHOWN IN FEET AND INDICATE DEPTHS BELOW MEAN LOWER LOW WATER.
 THE INFORMATION DEPICTED ON THIS MAP REPRESENTS THE RESULTS OF A SURVEY CONDUCTED ON THE DATE INDICATED AND CAN ONLY BE CONSIDERED TO REPRESENT THE GENERAL CONDITION EXISTING AT THAT TIME.
 *SHOALEST SOUNDING PER QUARTER PER REACH

DRAWING NOT TO BE USED FOR NAVIGATION. ONLY CHANNEL CONDITION AT DATE OF SURVEY. THE LOCATION OF ALL NAVIGATION AIDS ARE BASED ON INFORMATION PROVIDED BY THE U.S. COAST GUARD BUOY LOCATION REPRESENT THE POSITION OF THE SINKER ONLY.

SURVEYED BY THE CORPS OF ENGINEERS.
 SOUNDINGS WERE TAKEN BY FATHOMETER AND ARE SHOWN TO THE NEAREST TENTH OF A FOOT.
 SOUNDINGS ARE BASED ON THE DATUM OF MEAN LOWER LOW WATER AT THE LOCALITY.

BASE MAPS ARE USDA NAIP 2010.
 THE PROJECT DEPTHS ARE AS FOLLOWS:
 INNER HARBOR CHANNEL -37.5 FEET.
 SANTE FE CHANNEL -30 FEET.

(INNER HARBOR CHANNEL) BENCHMARK A-558 ELEV 15.81 FT. MLLW.
 BENCHMARK #2 (1132) USCGS DISK OLD FORD PLANT 16.0825 FT. MLLW.
 B.M. LS 2769 CITY OF RICHMOND DISK PAVEMENT 13.971 FT. MLLW.

TIDE GAGE LOCATION: MON B-1.
 HORIZONTAL GPS CONTROL: COAST GUARD D-BEACON.
 VERTICAL CONTROL: BENCHMARK, MLLW ELEV., AGENCY

ALAMEDA COUNTY
 RICHMOND INNER HARBOR
 CONDITION SURVEY
 15-22 MARCH 2016

Sheet Reference Number
 5 of 5