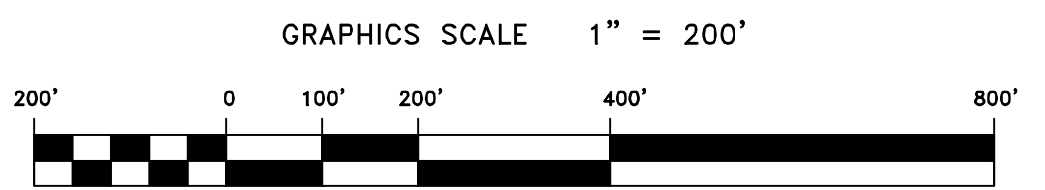
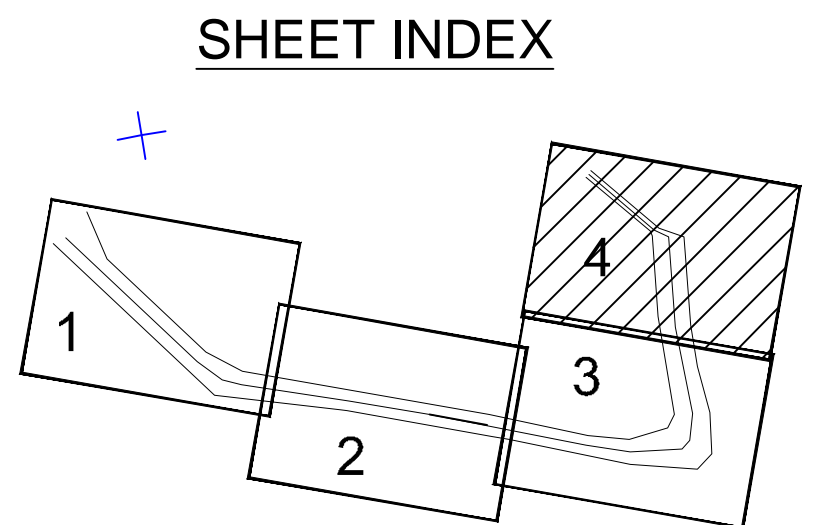


N.A.D. 1983 FEET COORDINATES		
CHANNEL	NORTH	EAST
21	2161813.86	6023718.06
22	2161806.13	6024470.68
23	2161929.13	6023659.09
24	2162011.61	6023871.48
25	2163218.51	6022130.20
26	2163371.37	6022259.12

N.A.D. 1983 FEET COORDINATES		
CHANNEL	EAST	NORTH
08	2156972.67	6020299.00
09	2157565.40	6019811.96
10	2156366.16	6023187.89
11	2157068.34	6022179.34
12	2156256.20	6024797.51
13	2156977.43	6023175.20
14	2156630.06	6025133.87
15	2157243.59	6024071.67
16	2157620.81	6025096.39
17	2157571.89	6024244.59
18	2158699.14	6024794.29
19	2159896.43	6023863.10
20	2159700.46	6024629.96

**LEGEND:**

	-38'
	-37'
	-36'
	-35'
	-34'



**PRELIMINARY ISSUE**  
THIS PLAN ISSUED FOR  
ADVANCE INFORMATION ONLY

US Army Corps  
of Engineers  
San Francisco District  
1455 Market Street  
San Francisco, CA 94103

Mark	Description	Date	Appr.

DESIGNED BY:	CHECKED BY:	DRAWN BY:	PDT
DATE:	SHEET NO.	DRAWING NO.	PDT
4/26/2016	4 OF 4	9 2	XXX
PREPARED UNDER THE DIRECTION OF			
JOHN C. MORROW			
LT. COLONEL, C.E., DISTRICT ENGINEER			

CALIFORNIA  
ALAMEDA COUNTY  
**RICHMOND INNER HARBOR**  
CONDITION SURVEY  
14 APRIL 2016

Sheet  
reference  
number  
**C4**

MATCHLINE — SHEET 3