

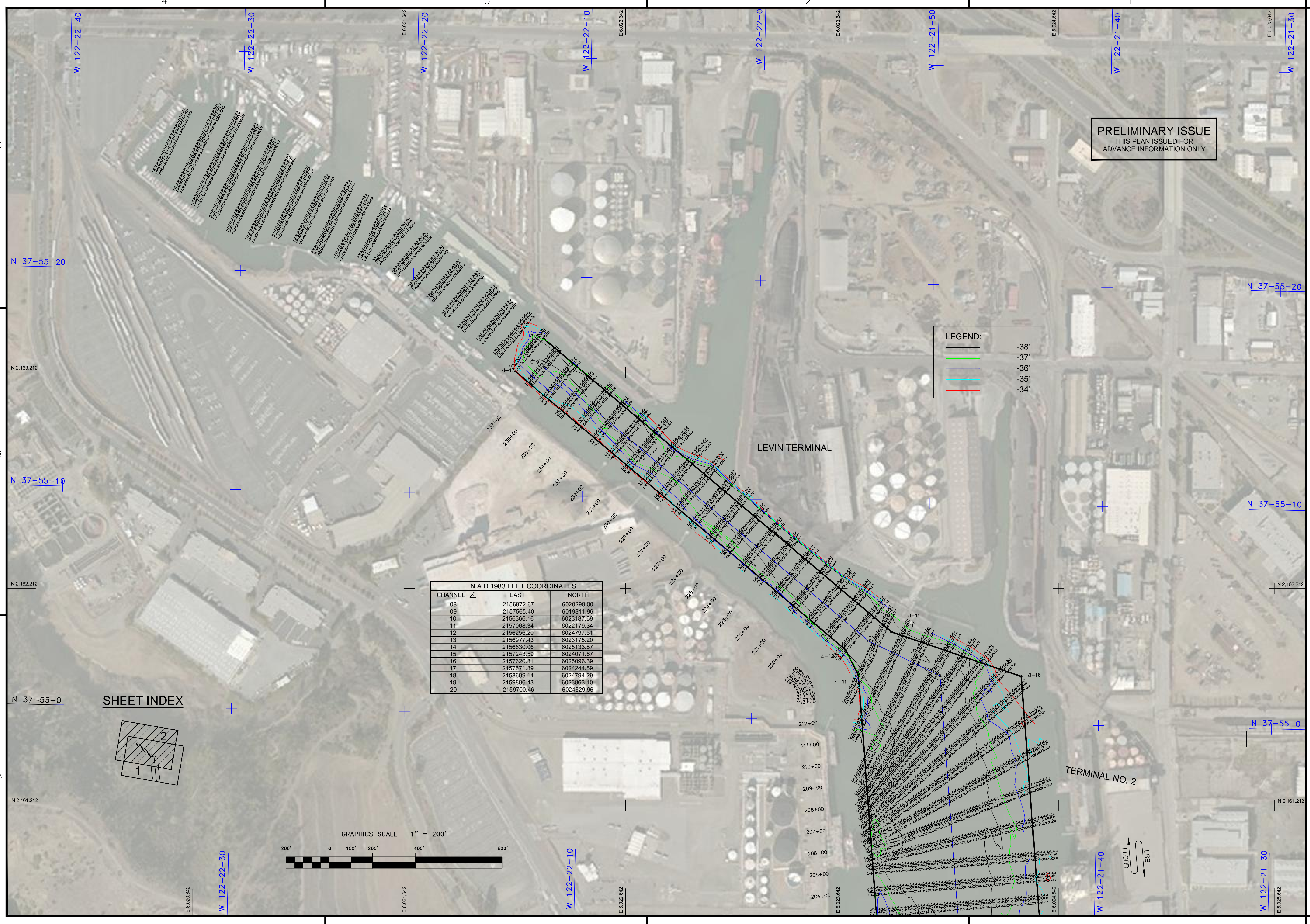
PRELIMINARY ISSUE
 THIS PLAN ISSUED FOR
 ADVANCE INFORMATION ONLY

Mark	Description	Date	Appr.

SUBMITTED:	PDT Hydro Survey Team Leader	DESIGNED BY:	PDT SHEET NO.	DRAWING NO.	DATE	CHECKED BY:	PDT	DRAWING NO.	PDT
APPROVED:	Chief, Hydro Survey Section								
	Chief, Construction Branch								

CALIFORNIA
 ALAMEDA COUNTY
 RICHMOND INNER HARBOR
 SANTA FE CHANNEL
 CONDITION SURVEY
 20 DECEMBER 2016

Sheet reference number
2



N.A.D 1983 FEET COORDINATES		
CHANNEL	EAST	NORTH
08	2156972.67	6020299.00
09	2157585.40	6019811.96
10	2156366.16	6023187.69
11	2157068.34	6022179.34
12	2156256.20	6024797.51
13	2156977.43	6023175.20
14	2156630.06	6025133.87
15	2157243.59	6024071.67
16	2157620.81	6025096.39
17	2157571.89	6024244.59
18	2158689.14	6024794.29
19	2159396.43	6023863.10
20	2159700.46	6024629.86

