

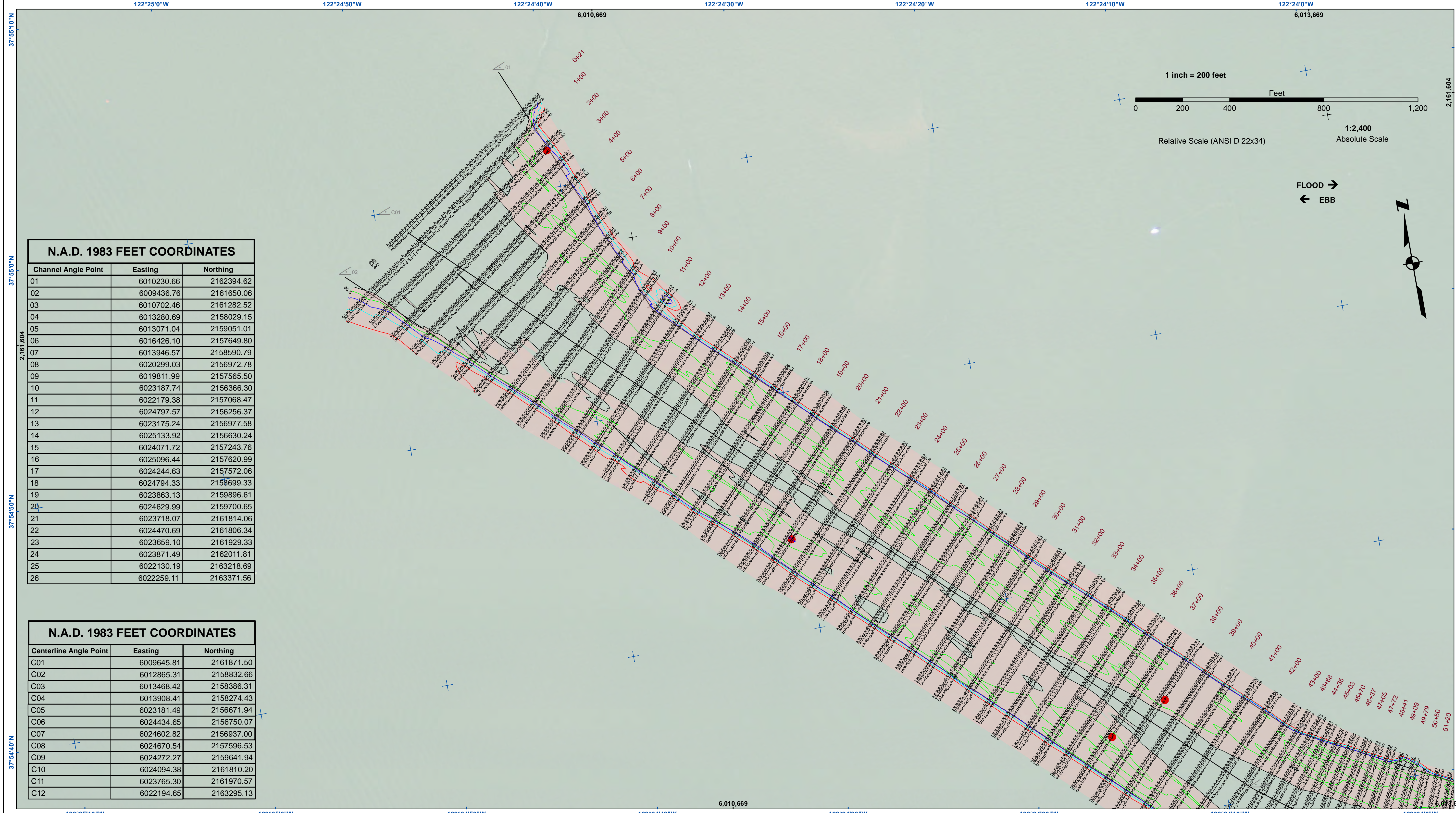


**DISCLAIMER**  
 The United States Government furnishes this information for the general information of the recipient. The United States Government makes no warranty, expressed or implied, concerning the accuracy, completeness, or reliability of the information. The user is responsible for the results of any application of the data for other than the intended purpose. The recipient may not transfer these data to others without also transferring this Disclaimer.

Prepared Under the Direction of	Chart Date	Aug 04, 2021
LT COLONEL C.E. DISTRICT ENGINEER	Designed by:	PDT
Hydro Survey Team Leader	Plotted by:	PDT
Chief, Hydro Survey Section	Checked by:	PDT
Chief, Construction Branch	Drawn by:	PDT

ALAMEDA COUNTY  
**RICHMOND INNER HARBOR**  
 CONDITION SURVEY  
 31 JULY & 02 AUGUST 2021

**Sheet Reference Number**  
 1 of 6

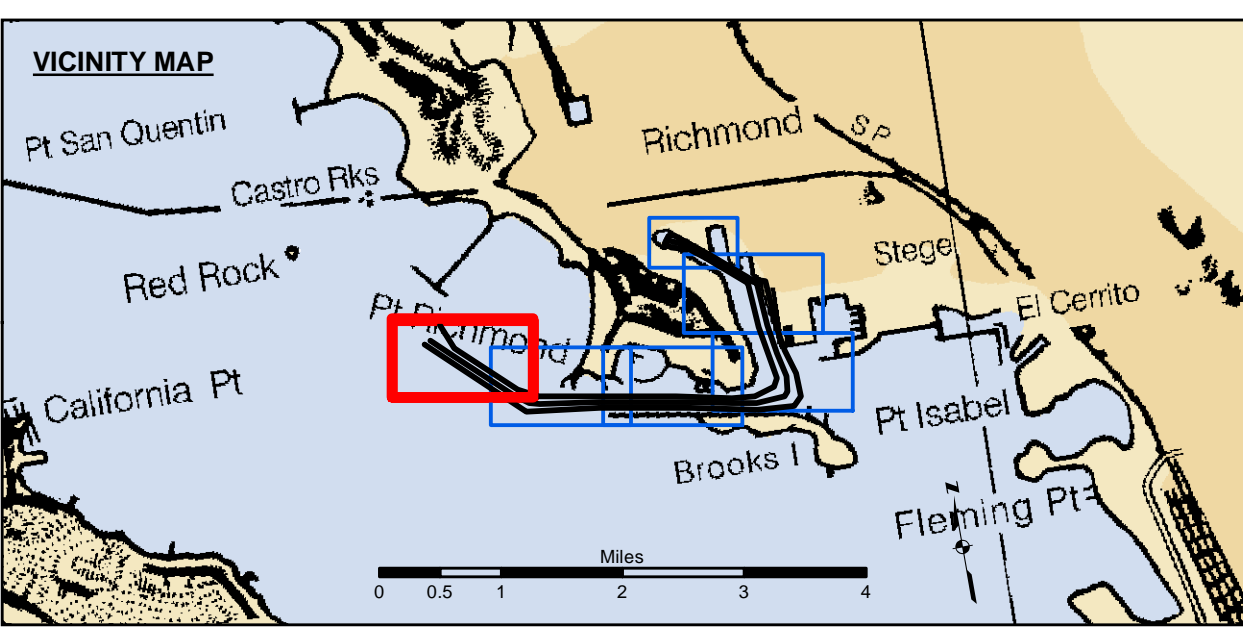


**N.A.D. 1983 FEET COORDINATES**

Channel Angle Point	Easting	Northing
01	6010230.66	2162394.62
02	6009436.76	2161650.06
03	6010702.46	2161282.52
04	6013280.69	2158029.15
05	6013071.04	2159051.01
06	6016426.10	2157649.80
07	6013946.57	2158590.79
08	6020299.03	2156972.78
09	6019811.99	2157565.50
10	6023187.74	2156366.30
11	6022179.38	2157068.47
12	6024797.57	2156256.37
13	6023175.24	2156977.58
14	6025133.92	2156630.24
15	6024071.72	2157243.76
16	6025096.44	2157620.99
17	6024244.63	2157572.06
18	6024794.33	2158699.33
19	6023863.13	2159896.61
20	6024629.99	2159700.65
21	6023718.07	2161814.06
22	6024470.69	2161806.34
23	6023659.10	2161929.33
24	6023871.49	2162011.81
25	6022130.19	2163218.69
26	6022259.11	2163371.56

**N.A.D. 1983 FEET COORDINATES**

Centerline Angle Point	Easting	Northing
C01	6009645.81	2161871.50
C02	6012865.31	2158832.66
C03	6013468.42	2158386.31
C04	6013908.41	2158274.43
C05	6023181.49	2156671.94
C06	6024434.65	2156750.07
C07	6024602.82	2156937.00
C08	6024670.54	2157596.53
C09	6024272.27	2159641.94
C10	6024094.38	2161810.20
C11	6023765.30	2161970.57
C12	6022194.65	2163295.13



Federal Navigation Channel	Beacon, General	<b>Contours</b>
Shoaling Area	Obstruction Point	-38
Placement Area	Navigation Buoy	-37
Anchorage Area	Navigation Buoy	-36
Wreck Area	Shoalest Sounding*	-35
Submerged Wreck		-34
Angle Point		

**NOTES:**  
 HORIZONTAL COORDINATE SYSTEM: NORTH AMERICAN DATUM OF 1983 (NAD83), PROJECTED TO THE STATE PLANE COORDINATE SYSTEM (SPCS), CALIFORNIA ZONE III, DISTANCE UNITS IN U.S. SURVEY FEET.  
 VERTICAL DATUM: SOUNDINGS ARE SHOWN IN FEET AND INDICATE DEPTHS BELOW MEAN LOWER LOW WATER.  
 THE INFORMATION DEPICTED ON THIS MAP REPRESENTS THE RESULTS OF A SURVEY CONDUCTED ON THE DATE INDICATED AND CAN ONLY BE CONSIDERED TO REPRESENT THE GENERAL CONDITION EXISTING AT THAT TIME.  
 \*SHOALEST SOUNDING PER QUARTER PER REACH

DRAWING NOT TO BE USED FOR NAVIGATION. ONLY CHANNEL CONDITION AT DATE OF SURVEY. THE LOCATION OF ALL NAVIGATION AIDS ARE BASED ON INFORMATION PROVIDED BY THE U.S. COAST GUARD BUOY LOCATION REPRESENT THE POSITION OF THE SINKER ONLY.

SOUNDINGS WERE TAKEN BY FATHOMETER AND ARE SHOWN TO THE NEAREST TENTH OF A FOOT. SOUNDINGS ARE BASED ON THE DATUM OF MEAN LOWER LOW WATER AT THE LOCALITY.

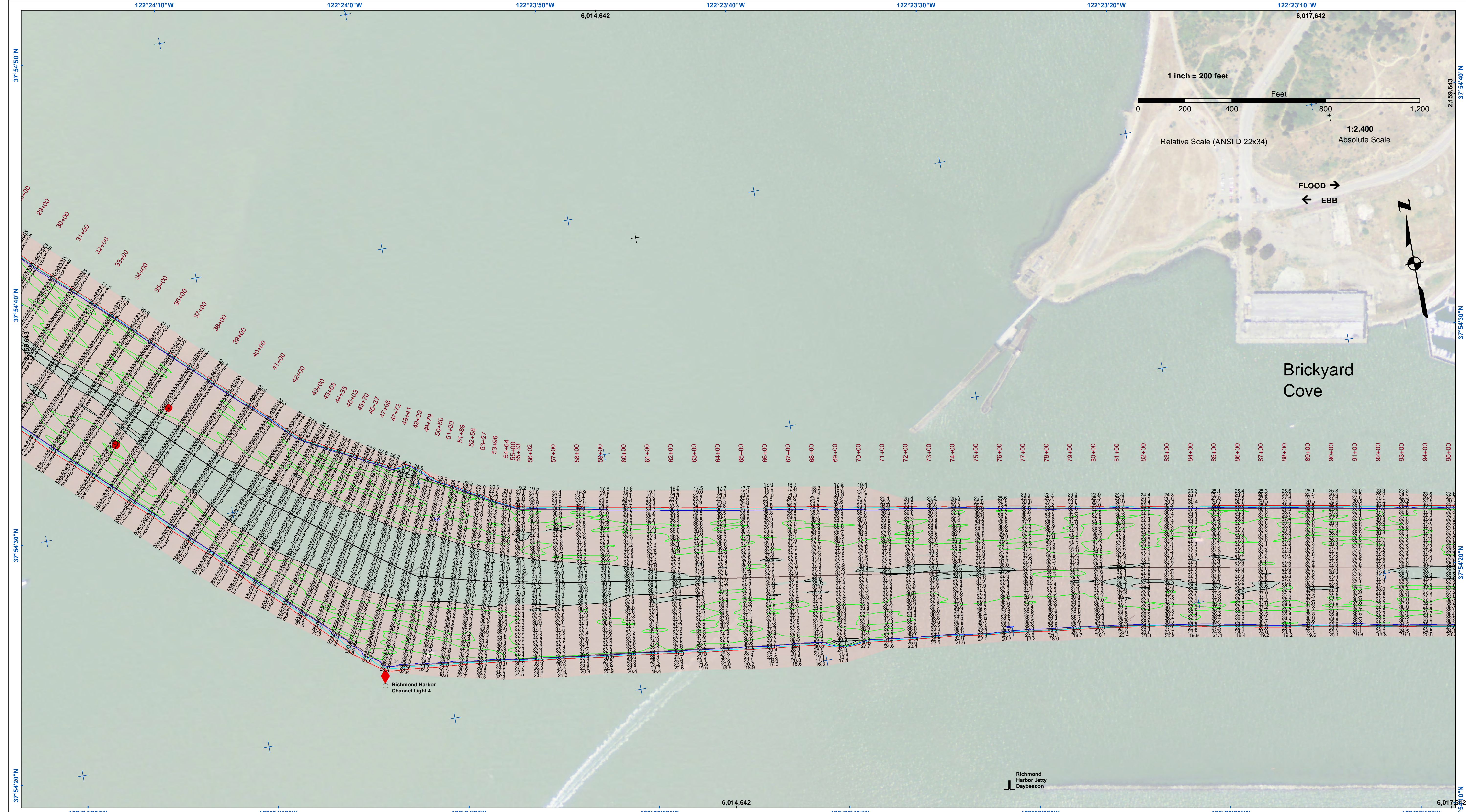
BASE MAPS ARE USDA NAIP 2010.

THE PROJECT DEPTHS ARE AS FOLLOWS:  
 INNER HARBOR CHANNEL -37.5 FEET.  
 SANTE FE CHANNEL -30 FEET.

(INNER HARBOR CHANNEL) BENCHMARK A-658 ELEV 15.81 FT. MLLW.  
 BENCHMARK #2 (1032) USCGS DISK OLD FORD PLANT 16.0825 FT. MLLW.  
 B.M. LS 2769 CITY OF RICHMOND DISK PAVEMENT 13.971 FT. MLLW.

TIDE GAGE LOCATION: MON B-1.  
 HORIZONTAL GPS CONTROL: COAST GUARD D-BEACON.  
 VERTICAL CONTROL: BENCHMARK, MLLW ELEV., AGENCY





**US Army Corps of Engineers**  
 San Francisco District  
 450 Golden Gate Ave  
 San Francisco, CA 94102

**DISCLAIMER**  
 The United States Government furnishes this information as a public service. It is not intended to be used for any purpose other than that for which it was prepared. The United States Government makes no warranty, expressed or implied, concerning the accuracy, completeness, or reliability of the information. The user assumes all liability for any use of the information. The United States Government is not responsible for the results of any use of the information. The user assumes all liability for any use of the information. The United States Government is not responsible for the results of any use of the information.

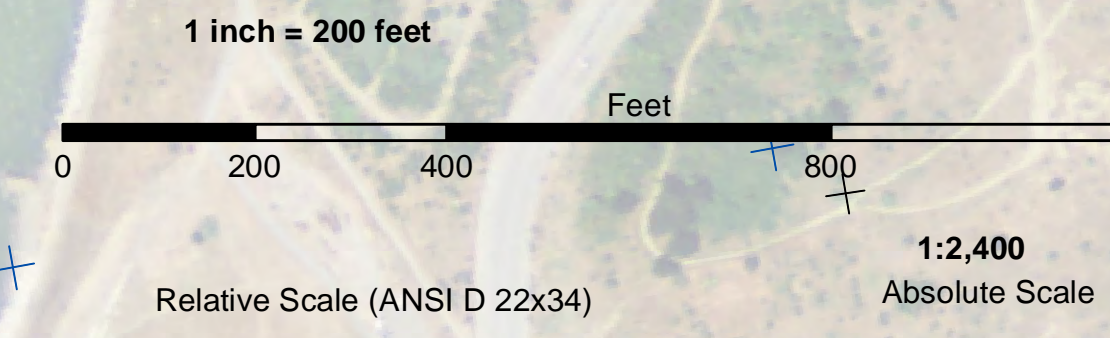
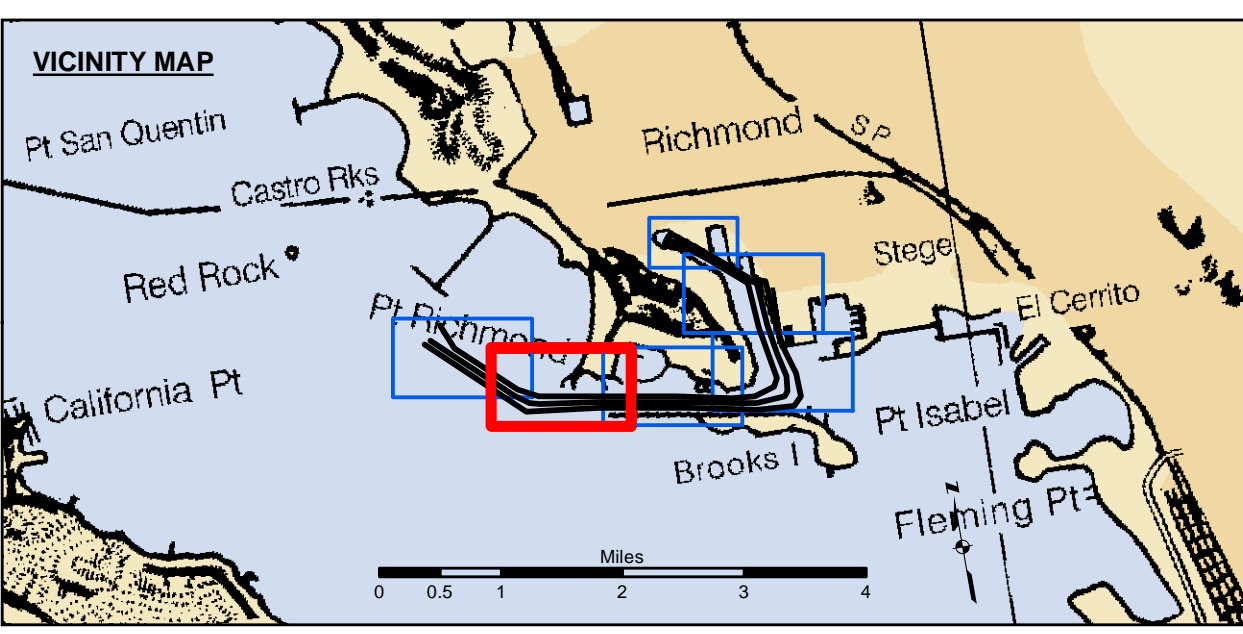


Chart Date:	Aug 04, 2021
Designed by:	PDT
Plotted By:	PDT
Checked By:	PDT
Drawn by:	PDT

ALAMEDA COUNTY  
**RICHMOND INNER HARBOR**  
 CONDITION SURVEY  
 31 JULY & 02 AUGUST 2021



Federal Navigation Channel	Beacon, General	<b>Contours</b>
Shoaling Area	Obstruction Point	-38
Placement Area	Navigation Buoy	-37
Anchorage Area	Navigation Buoy	-36
Wreck Area	Shoalest Sounding*	-35
Submerged Wreck		-34
Angle Point		

**NOTES:**  
 HORIZONTAL COORDINATE SYSTEM: NORTH AMERICAN DATUM OF 1983 (NAD83), PROJECTED TO THE STATE PLANE COORDINATE SYSTEM (SPCS), CALIFORNIA ZONE III. DISTANCE UNITS IN U.S. SURVEY FEET.  
 VERTICAL DATUM: SOUNDINGS ARE SHOWN IN FEET AND INDICATE DEPTHS BELOW MEAN LOWER LOW WATER.  
 THE INFORMATION DEPICTED ON THIS MAP REPRESENTS THE RESULTS OF A SURVEY CONDUCTED ON THE DATE INDICATED AND CAN ONLY BE CONSIDERED TO REPRESENT THE GENERAL CONDITION EXISTING AT THAT TIME.  
 \*SHOALEST SOUNDING PER QUARTER PER REACH

DRAWING NOT TO BE USED FOR NAVIGATION. ONLY CHANNEL CONDITION AT DATE OF SURVEY. THE LOCATION OF ALL NAVIGATION AIDS ARE BASED ON INFORMATION PROVIDED BY THE U.S. COAST GUARD BUOY LOCATION REPRESENT THE POSITION OF THE SINKER ONLY.

SOUNDINGS WERE TAKEN BY FATHOMETER AND ARE SHOWN TO THE NEAREST TENTH OF A FOOT. SOUNDINGS ARE BASED ON THE DATUM OF MEAN LOWER LOW WATER AT THE LOCALITY.

BASE MAPS ARE USDA NAIP 2010.

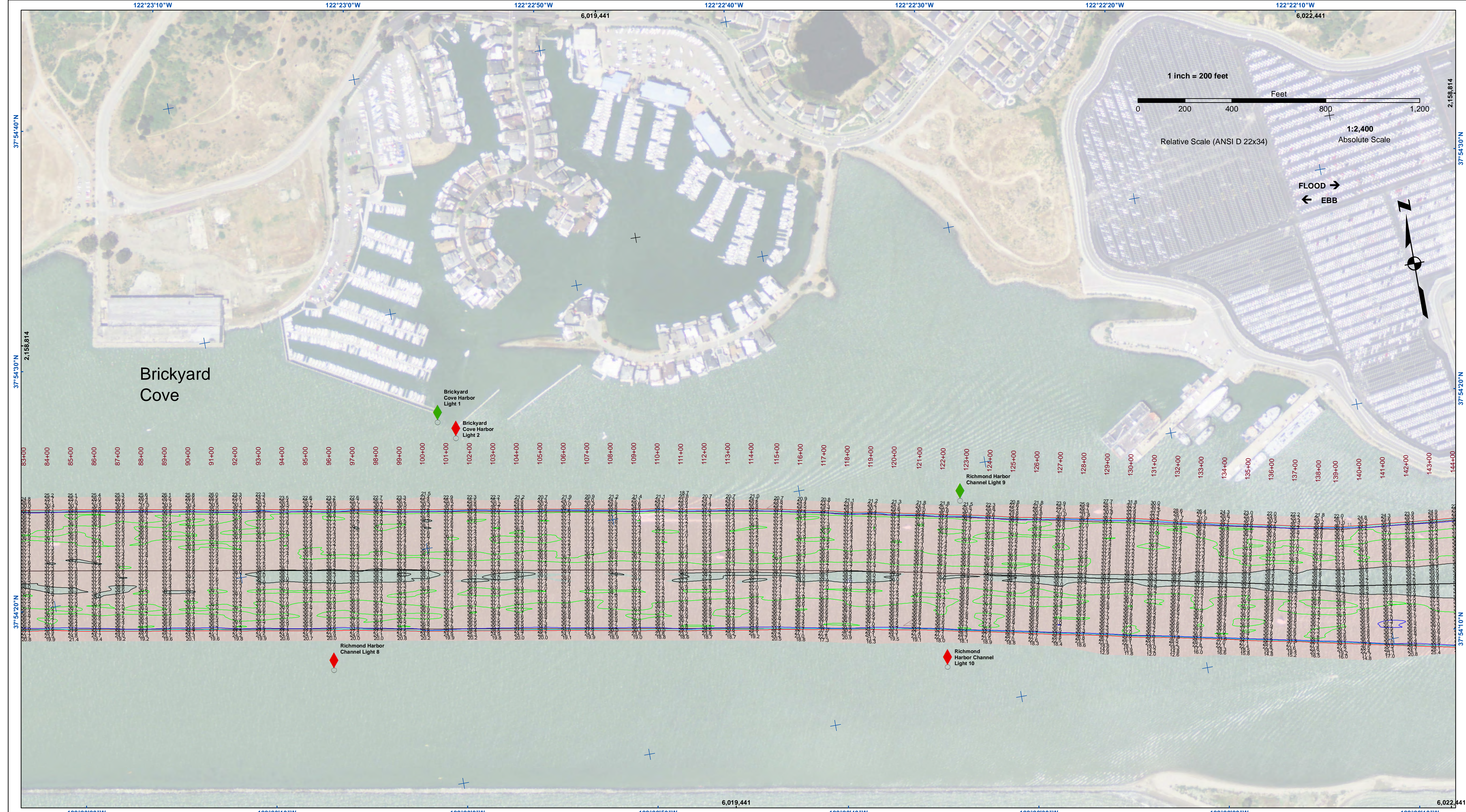
THE PROJECT DEPTHS ARE AS FOLLOWS:  
 INNER HARBOR CHANNEL - 37.5 FEET.  
 SANTE FE CHANNEL - 30 FEET.

(INNER HARBOR CHANNEL) BENCHMARK A-658 ELEV 15.81 FT. MLLW.  
 BENCHMARK #2 (1032) USCGS DISK OLD FORD PLANT 16.0825 FT. MLLW.  
 B.M. LS 2769 CITY OF RICHMOND DISK PAVEMENT 13.971 FT. MLLW.

TIDE GAGE LOCATION: MON B-1.  
 HORIZONTAL GPS CONTROL: COAST GUARD D-BEACON.  
 VERTICAL CONTROL: BENCHMARK, MLLW ELEV., AGENCY

**Sheet**  
**Reference**  
**Number**  
**2 of 6**

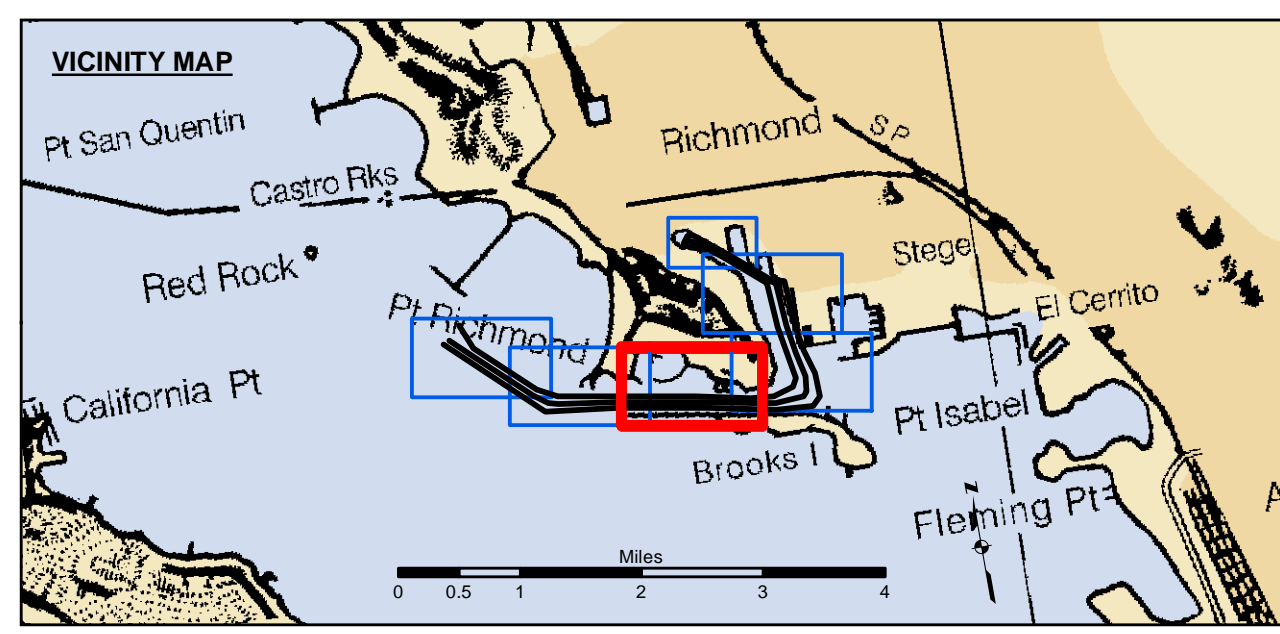




**US Army Corps of Engineers**  
 San Francisco District  
 450 Golden Gate Ave  
 San Francisco, CA 94102

**DISCLAIMER**  
 The United States Government furnishes this information for the general information of the recipient and does not warrant, express or implied, the accuracy, completeness, or reliability of the data. The user assumes all liability for the use of the data for any purpose other than the intended purpose. The user is responsible for the results of any application of the data for other than the intended purpose. These data are not to be used for navigation.

Chart Date:	Aug 04, 2021
Designed by:	PDT
Surveyed By:	Plotted By: PDT
Checked By:	PDT
Drawn by:	PDT



Federal Navigation Channel	Beacon, General	<b>Contours</b>
Shoaling Area	Obstruction Point	-38
Placement Area	Navigation Buoy	-37
Anchorage Area	Navigation Buoy	-36
Wreck Area	Shoalest Sounding*	-35
Submerged Wreck		-34
Angle Point		

**NOTES:**  
 HORIZONTAL COORDINATE SYSTEM: NORTH AMERICAN DATUM OF 1983 (NAD83), PROJECTED TO THE STATE PLANE COORDINATE SYSTEM (SPCS), CALIFORNIA ZONE III. DISTANCE UNITS IN U.S. SURVEY FEET.  
 VERTICAL DATUM: SOUNDINGS ARE SHOWN IN FEET AND INDICATE DEPTHS BELOW MEAN LOWER LOW WATER.  
 THE INFORMATION DEPICTED ON THIS MAP REPRESENTS THE RESULTS OF A SURVEY CONDUCTED ON THE DATE INDICATED AND CAN ONLY BE CONSIDERED TO REPRESENT THE GENERAL CONDITION EXISTING AT THAT TIME.  
 \*SHOALEST SOUNDING PER QUARTER PER REACH

DRAWING NOT TO BE USED FOR NAVIGATION. ONLY CHANNEL CONDITION AT DATE OF SURVEY. THE LOCATION OF ALL NAVIGATION AIDS ARE BASED ON INFORMATION PROVIDED BY THE U.S. COAST GUARD BUOY LOCATION REPRESENT THE POSITION OF THE SINKER ONLY.

SOUNDINGS WERE TAKEN BY FATHOMETER AND ARE SHOWN TO THE NEAREST TENTH OF A FOOT. SOUNDINGS ARE BASED ON THE DATUM OF MEAN LOWER LOW WATER AT THE LOCALITY.

BASE MAPS ARE USDA NAIP 2010.

THE PROJECT DEPTHS ARE AS FOLLOWS:  
 INNER HARBOR CHANNEL -37.5 FEET.  
 SANTE FE CHANNEL -30 FEET.

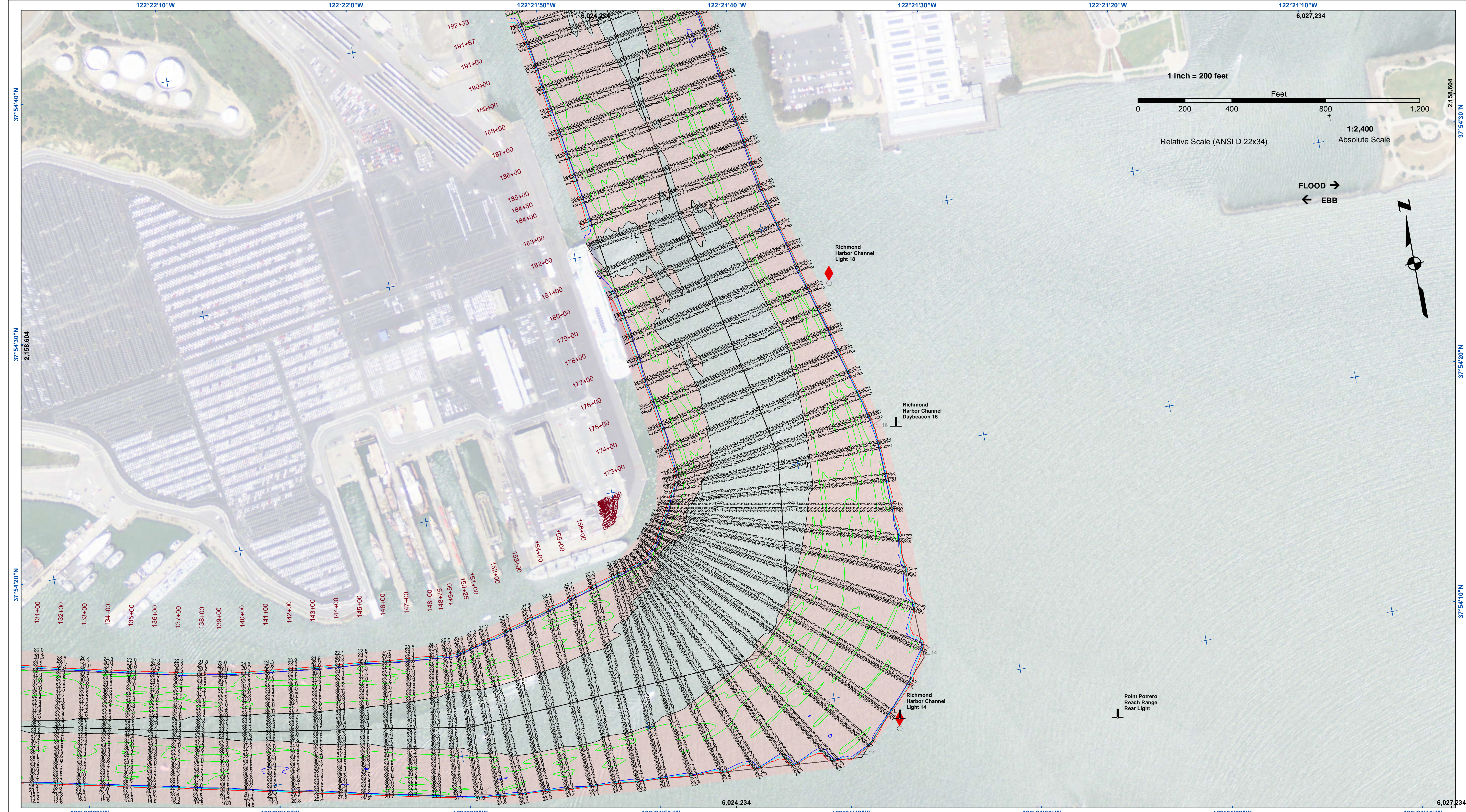
(INNER HARBOR CHANNEL) BENCHMARK A-658 ELEV 15.81 FT. MLLW.  
 BENCHMARK #2 (1032) USCGS DISK OLD FORD PLANT 16.0825 FT. MLLW.  
 B.M. LS 2769 CITY OF RICHMOND DISK PAVEMENT 13.971 FT. MLLW.

TIDE GAGE LOCATION: MON B-1.  
 HORIZONTAL GPS CONTROL: COAST GUARD D-BEACON.  
 VERTICAL CONTROL: BENCHMARK, MLLW ELEV., AGENCY

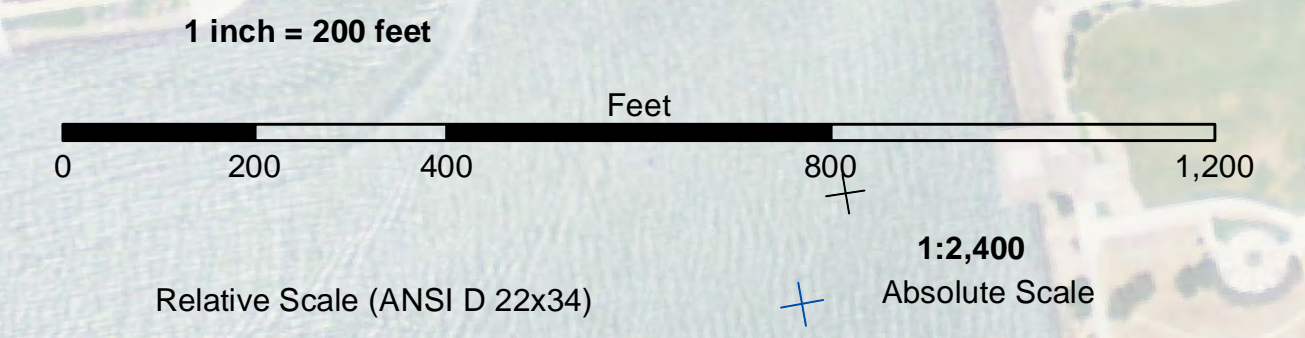
CALIFORNIA  
 ALAMEDA COUNTY  
**RICHMOND INNER HARBOR**  
 CONDITION SURVEY  
 31 JULY & 02 AUGUST 2021

**Sheet Reference Number**  
 3 of 6



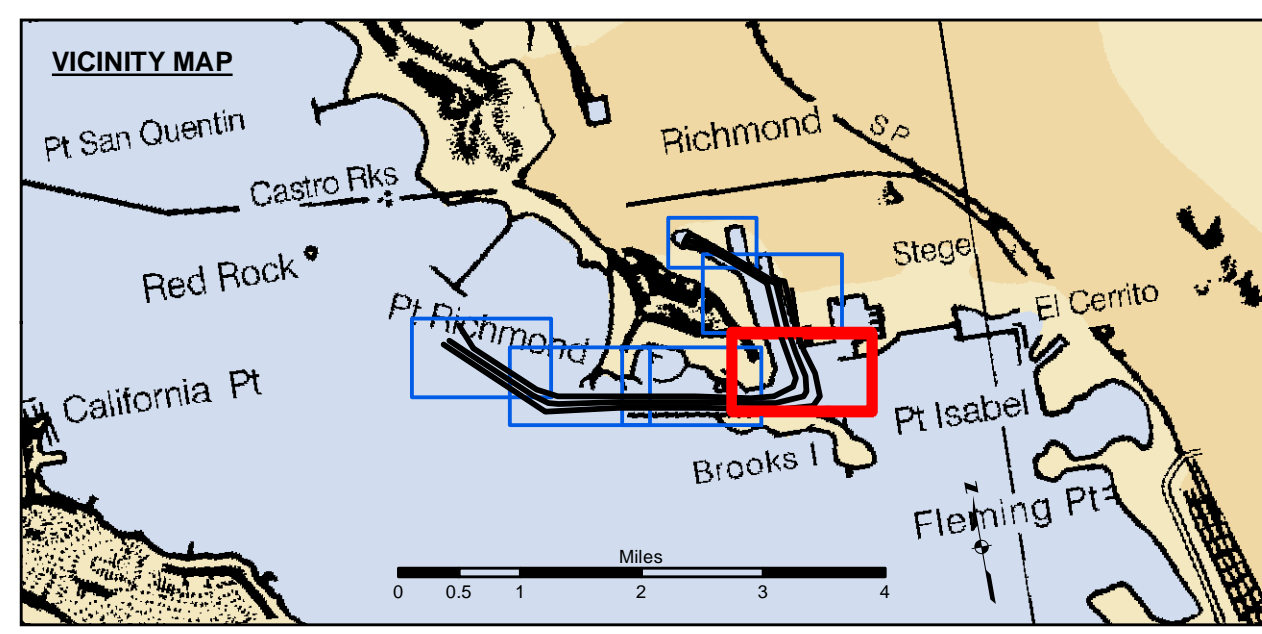


**US Army Corps of Engineers**  
 San Francisco District  
 450 Golden Gate Ave  
 San Francisco, CA 94102



**DISCLAIMER**  
 The United States Government furnishes this information as a service to the public. It is not intended to be used for any purpose other than the intended purpose. The user assumes all liability for any use of this information. The United States Government makes no warranty, expressed or implied, concerning the accuracy, completeness, or timeliness of the information. The user is responsible for the results of any use of this information. The United States Government is not liable for any damages, including consequential damages, arising from the use of this information. These data belong to the Government. Therefore, the user may not reproduce, distribute, or disseminate these data to others without also transferring this disclaimer.

Chart Date:	Aug 04, 2021
Surveyed By:	KEVIN P. ARNETT
Plotted By:	PDT
Designed by:	PDT
Drawn by:	PDT



Federal Navigation Channel	Beacon, General	<b>Contours</b>
Shoaling Area	Obstruction Point	-38
Placement Area	Navigation Buoy	-37
Anchorage Area	Navigation Buoy	-36
Wreck Area	Shoalest Sounding*	-35
Submerged Wreck		-34
Angle Point		

**NOTES:**  
 HORIZONTAL COORDINATE SYSTEM: NORTH AMERICAN DATUM OF 1983 (NAD83), PROJECTED TO THE STATE PLANE COORDINATE SYSTEM (SPCS), CALIFORNIA ZONE III. DISTANCE UNITS IN U.S. SURVEY FEET.  
 VERTICAL DATUM: SOUNDINGS ARE SHOWN IN FEET AND INDICATE DEPTHS BELOW MEAN LOWER LOW WATER.  
 THE INFORMATION DEPICTED ON THIS MAP REPRESENTS THE RESULTS OF A SURVEY CONDUCTED ON THE DATE INDICATED AND CAN ONLY BE CONSIDERED TO REPRESENT THE GENERAL CONDITION EXISTING AT THAT TIME.  
 \*SHOALEST SOUNDING PER QUARTER PER REACH

DRAWING NOT TO BE USED FOR NAVIGATION. ONLY CHANNEL CONDITION AT DATE OF SURVEY. THE LOCATION OF ALL NAVIGATION AIDS ARE BASED ON INFORMATION PROVIDED BY THE U.S. COAST GUARD BUOY LOCATION REPRESENT THE POSITION OF THE SINKER ONLY.

SOUNDINGS WERE TAKEN BY FATHOMETER AND ARE SHOWN TO THE NEAREST TENTH OF A FOOT. SOUNDINGS ARE BASED ON THE DATUM OF MEAN LOWER LOW WATER AT THE LOCALITY.

BASE MAPS ARE USDA NAIP 2010.

THE PROJECT DEPTHS ARE AS FOLLOWS:  
 INNER HARBOR CHANNEL: 37.5 FEET.  
 SANTE FE CHANNEL: 30 FEET.

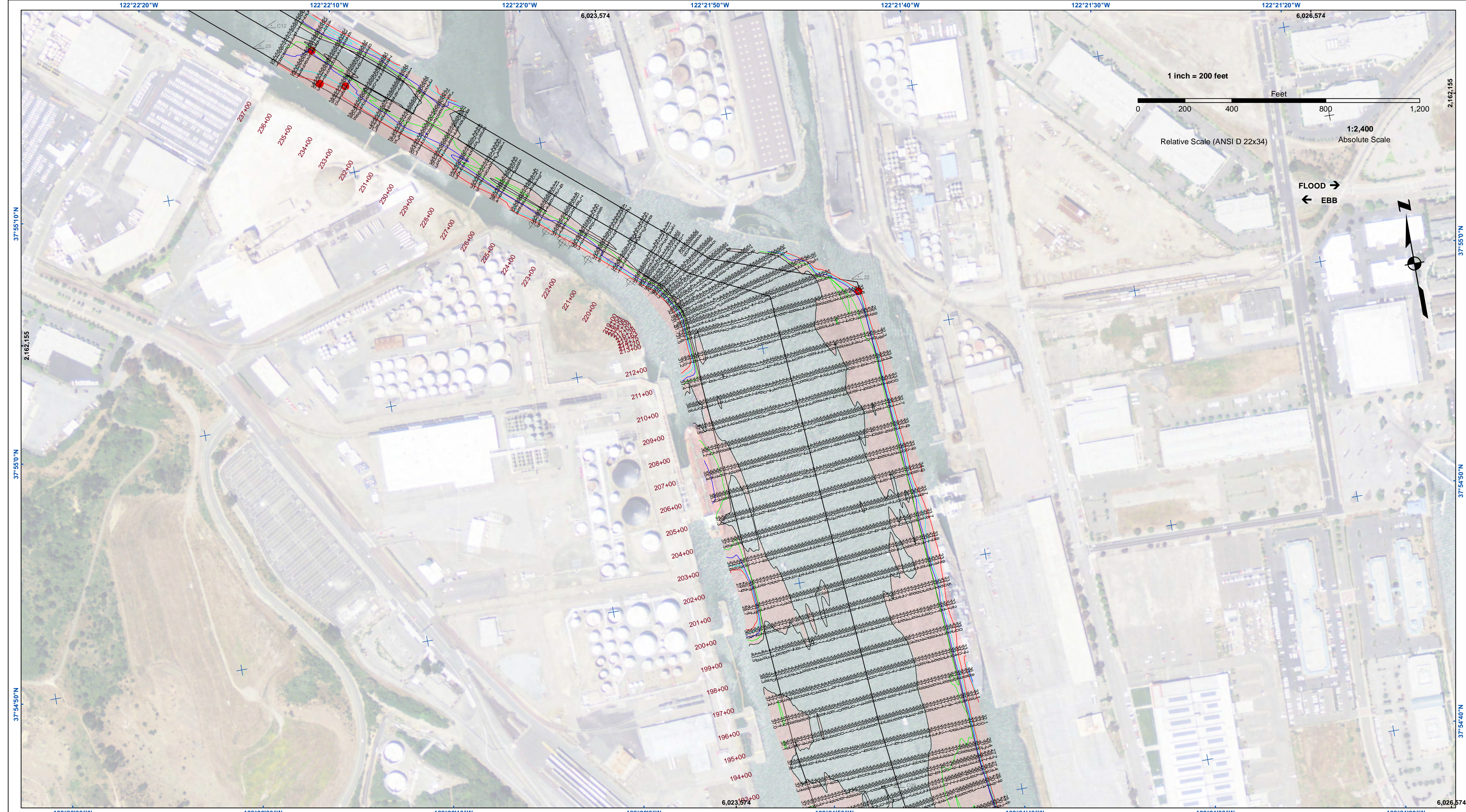
(INNER HARBOR CHANNEL) BENCHMARK A-658 ELEV 15.81 FT. MLLW.  
 BENCHMARK #2 (1032) USCGS DISK OLD FORD PLANT 16.0825 FT. MLLW.  
 B.M. LS 2769 CITY OF RICHMOND DISK PAVEMENT 13.971 FT. MLLW.

TIDE GAGE LOCATION: MON B-1.  
 HORIZONTAL GPS CONTROL: COAST GUARD D-BEACON.  
 VERTICAL CONTROL: BENCHMARK, MLLW ELEV., AGENCY

CALIFORNIA  
 ALAMEDA COUNTY  
**RICHMOND INNER HARBOR**  
 CONDITION SURVEY  
 31 JULY & 02 AUGUST 2021

**Sheet**  
**Reference**  
**Number**  
**4 of 6**





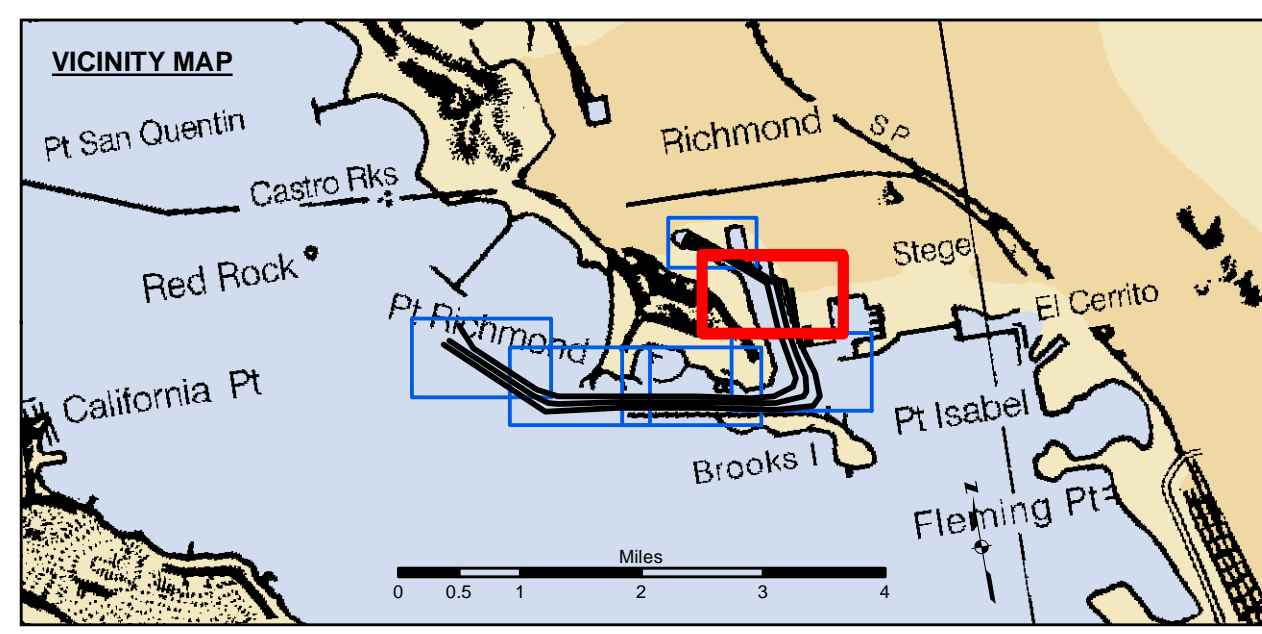
**US Army Corps of Engineers**  
 San Francisco District  
 450 Golden Gate Ave  
 San Francisco, CA 94102

**1 inch = 200 feet**  
 Feet  
 0 200 400 800 1,200  
 Relative Scale (ANSI D 22x34)      1:2,400  
 Absolute Scale

**FLOOD →**  
**← EBB**

**DISCLAIMER:** The United States Government furnishes this information as a public service. It is not intended to be used for any purpose other than the intended purpose. The United States Government makes no warranty, expressed or implied, concerning the accuracy, completeness, or reliability of the information. The user assumes all responsibility for the use of the information. The United States Government shall not be liable for any damages, including consequential damages, arising from the use of the information. These data belong to the Government. Therefore, the user shall not disseminate or otherwise use these data for purposes other than those intended by the Government without also transferring this disclaimer.

Chart Date:	Aug 04, 2021
Designed by:	PDT
Drawn by:	PDT
Checked by:	PDT
Approved:	Chief, Construction Branch
Surveyed By:	KEVIN P. ARNETT
Plotted By:	PDT
Flashed By:	PDT
Checked By:	PDT
Approved:	Chief, Construction Branch



Federal Navigation Channel	Beacon, General	<b>Contours</b>
Shoaling Area	Obstruction Point	-38
Placement Area	Navigation Buoy	-37
Anchorage Area	Navigation Buoy	-36
Wreck Area	Shoalest Sounding*	-35
Submerged Wreck		-34
Angle Point		

**NOTES:**  
 HORIZONTAL COORDINATE SYSTEM: NORTH AMERICAN DATUM OF 1983 (NAD83), PROJECTED TO THE STATE PLANE COORDINATE SYSTEM (SPCS), CALIFORNIA ZONE III. DISTANCE UNITS IN U.S. SURVEY FEET.  
 VERTICAL DATUM: SOUNDINGS ARE SHOWN IN FEET AND INDICATE DEPTHS BELOW MEAN LOWER LOW WATER.  
 THE INFORMATION DEPICTED ON THIS MAP REPRESENTS THE RESULTS OF A SURVEY CONDUCTED ON THE DATE INDICATED AND CAN ONLY BE CONSIDERED TO REPRESENT THE GENERAL CONDITION EXISTING AT THAT TIME.  
 \*SHOALEST SOUNDING PER QUARTER PER REACH

DRAWING NOT TO BE USED FOR NAVIGATION. ONLY CHANNEL CONDITION AT DATE OF SURVEY. THE LOCATION OF ALL NAVIGATION AIDS ARE BASED ON INFORMATION PROVIDED BY THE U.S. COAST GUARD BUOY LOCATION REPRESENT THE POSITION OF THE SINKER ONLY.

SURVEYED BY THE CORPS OF ENGINEERS.  
 SOUNDINGS WERE TAKEN BY FATHOMETER AND ARE SHOWN TO THE NEAREST TENTH OF A FOOT.  
 SOUNDINGS ARE BASED ON THE DATUM OF MEAN LOWER LOW WATER AT THE LOCALITY.

BASE MAPS ARE USDA NAIP 2010.  
 THE PROJECT DEPTHS ARE AS FOLLOWS:  
 INNER HARBOR CHANNEL: 37.5 FEET.  
 SANTE FE CHANNEL: 30 FEET.

(INNER HARBOR CHANNEL) BENCHMARK A-658 ELEV 15.81 FT. MLLW.  
 BENCHMARK #2 (1032) USCGS DISK OLD FORD PLANT 16.0825 FT. MLLW.  
 B.M. LS 2769 CITY OF RICHMOND DISK PAVEMENT 13.971 FT. MLLW.

TIDE GAGE LOCATION: MON B-1.  
 HORIZONTAL GPS CONTROL: COAST GUARD D-BEACON.  
 VERTICAL CONTROL: BENCHMARK, MLLW ELEV., AGENCY

CALIFORNIA  
 ALAMEDA COUNTY  
**RICHMOND INNER HARBOR**  
 CONDITION SURVEY  
 31 JULY & 02 AUGUST 2021

**Sheet**  
**Reference**  
**Number**  
**5 of 6**