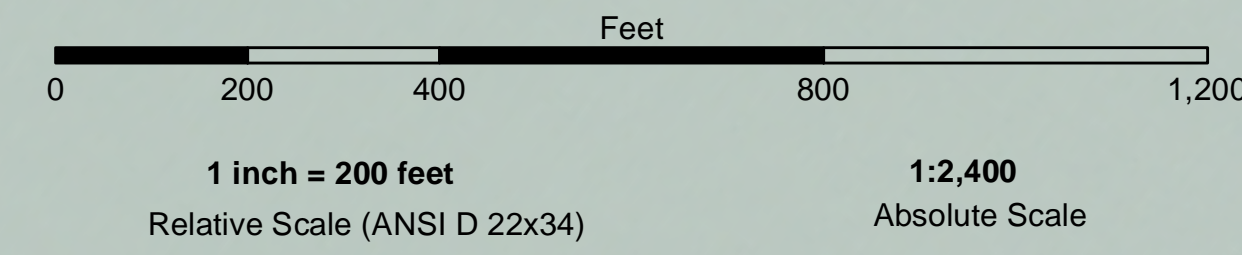


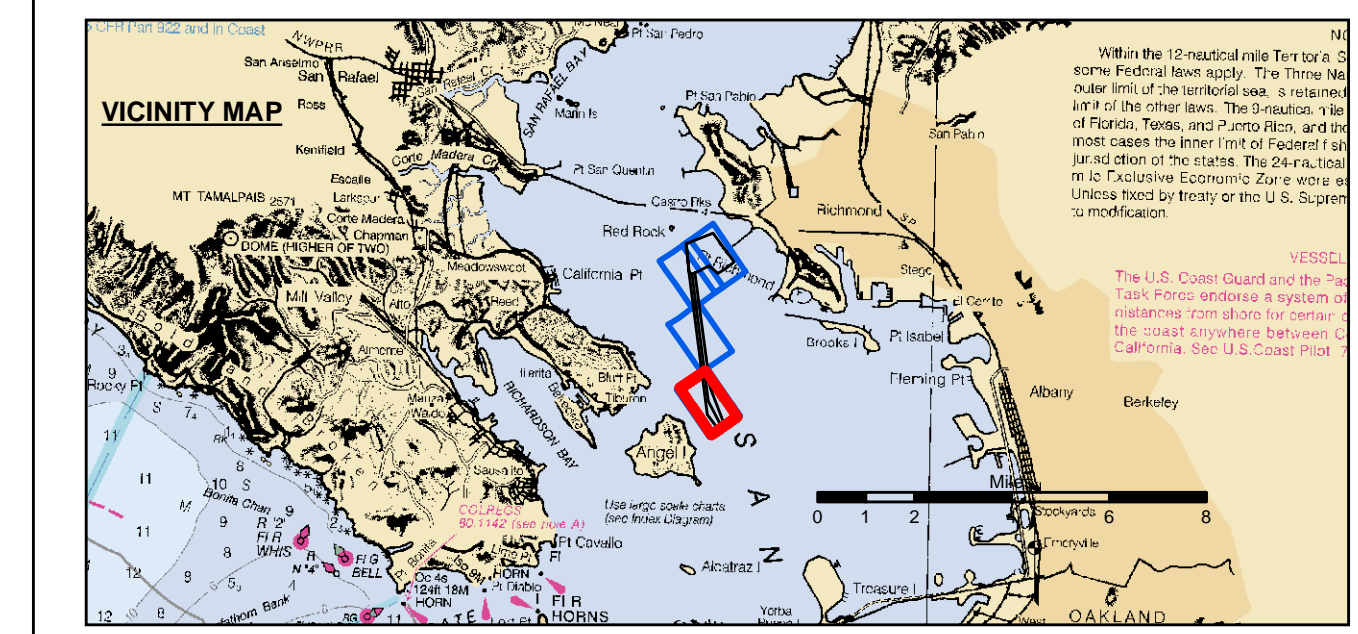
PRELIMINARY ISSUE
THIS PLAN ISSUED FOR
ADVANCE INFORMATION ONLY



US Army Corps of Engineers
San Francisco District
450 Golden Gate Ave
San Francisco, CA 94102

DISCLAIMER
The United States Government furnishes this information as a service to the public. It is not intended to be used for any purpose other than the intended purpose. The user is responsible for the results of any application of the data for other than the intended purpose. The United States Government makes no warranty, expressed or implied, concerning the accuracy, completeness, or reliability of the information furnished. The United States Government shall not be liable for any damages, including consequential damages, arising from the use of the information furnished. These data belong to the Government. Therefore, the recipient may not transfer these data to others without also transferring this Disclaimer.

Chart Date:	Feb 01, 2022
Designed by:	PDT
Drawn by:	PDT
Surveyed By:	PDT
Plotted By:	PDT
Checked By:	PDT
Approved:	Chief, Construction Branch



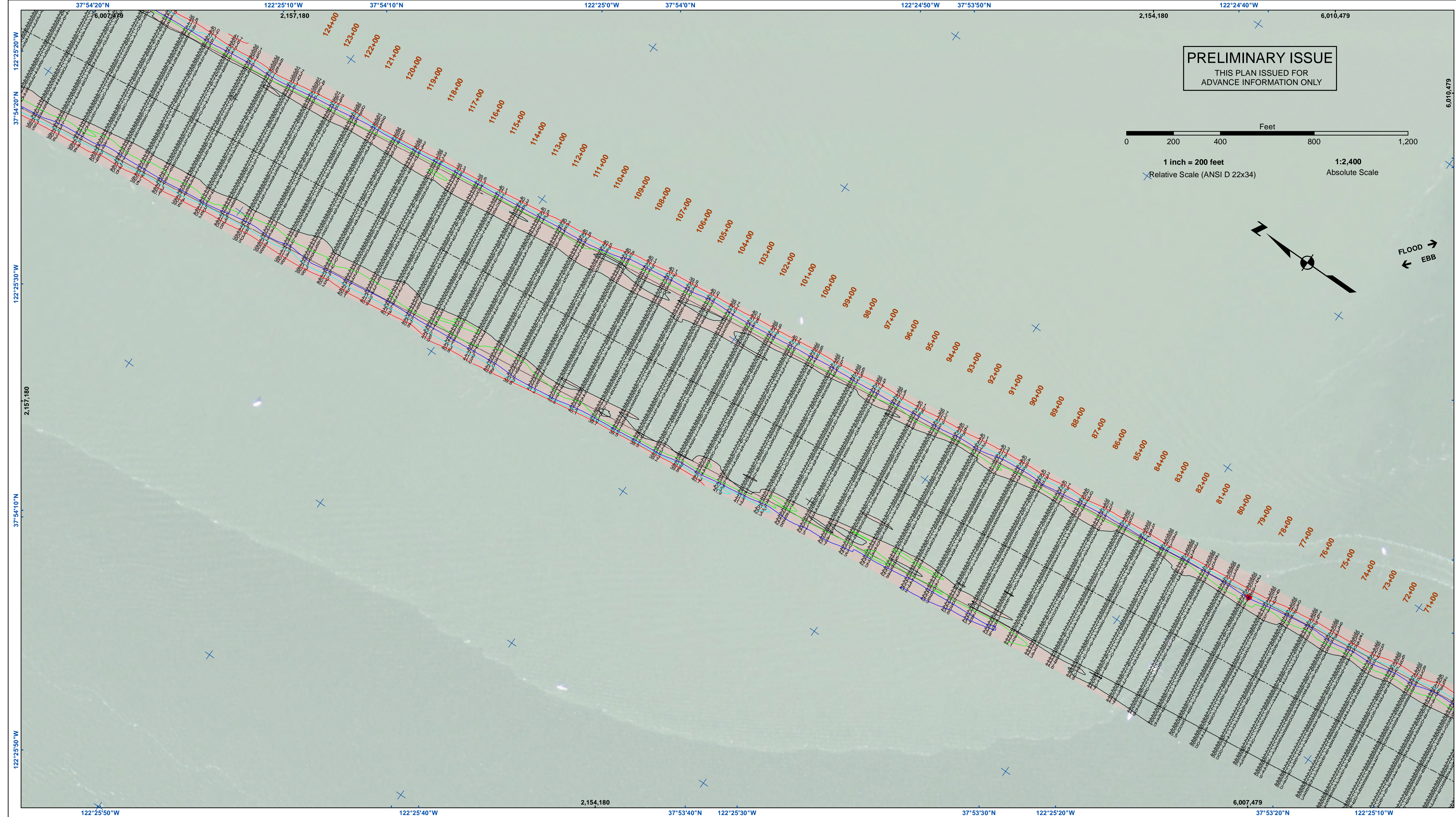
	Federal Navigation Channel		Beacon, General		Contours
	Shoaling Area		Obstruction Point		-45
	Placement Area		Navigation Buoy		-44
	Anchorage Area		Navigation Buoy		-43
	Wreck Area		Shoalest Sounding*		-42
	Submerged Wreck				-41
	Angle Point				

NOTES:
HORIZONTAL COORDINATE SYSTEM:
NORTH AMERICAN DATUM OF 1983 (NAD83), PROJECTED TO THE STATE PLANE COORDINATE SYSTEM (SPCS), CALIFORNIA ZONE III. DISTANCE UNITS IN U.S. SURVEY FEET.
VERTICAL DATUM:
SOUNDINGS ARE SHOWN IN FEET AND INDICATE DEPTHS BELOW MEAN LOWER LOW WATER.
THE INFORMATION DEPICTED ON THIS MAP REPRESENTS THE RESULTS OF A SURVEY CONDUCTED ON THE DATE INDICATED AND CAN ONLY BE CONSIDERED TO REPRESENT THE GENERAL CONDITION EXISTING AT THAT TIME.
*SHOALEST SOUNDING PER QUARTER PER REACH DRAWING NOT TO BE USED FOR NAVIGATION.
ONLY CHANNEL CONDITION AT DATE OF SURVEY.
THE LOCATION OF ALL NAVIGATION AIDS ARE BASED ON INFORMATION PROVIDED BY THE U.S. COAST GUARD. BUOY LOCATION REPRESENT THE POSITION OF THE SINKER ONLY.
SURVEYED BY THE CORPS OF ENGINEERS.

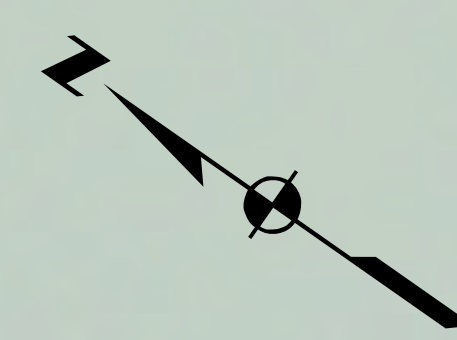
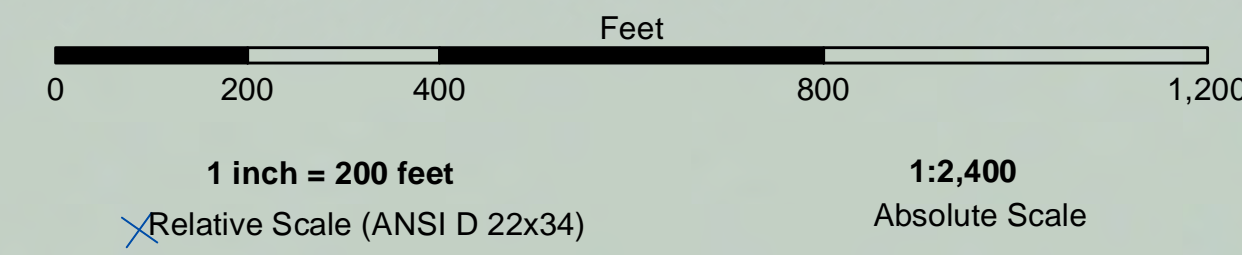
SOUNDINGS WERE TAKEN BY FATHOMETER AND ARE SHOWN TO THE NEAREST TENTH OF A FOOT.
SOUNDINGS ARE BASED ON THE DATUM OF MEAN LOWER LOW WATER AT THE LOCALITY.
BASE MAPS ARE USDA NAIP 2010.
THE PROJECT DEPTHS ARE AS FOLLOWS:
SOUTHAMPTON SHOALS CHANNEL -45 FEET.
LONG WHARF MANEUVERING AREA -45 FEET.
1:00 INDICATED THE NUMBER AND BEGINNING OF A LINE OF SOUNDINGS.
HORIZONTAL CONTROL:
HORIZONTAL POSITIONING: COAST GUARD DGPS
VERTICAL TIDES: INTERPOLATED FROM NOAA ONLINE TIDE STATIONS:
941 4863 - RICHMOND, CA
941 4290 - SAN FRANCISCO, CA
VERTICAL CONTROL:
(SOUTHAMPTON SHOALS & LONG WHARF MANEUVERING) BENCHMARK "10" 1937 ELEV 15.86 FT. MLLW.
AND BENCHMARK "11" 1946 ELEV 15.47 FT. MLLW.
TIDE GAUGE LOCATED AT TIBURON NET DEPOT.

CALIFORNIA
ALAMEDA COUNTY
RICHMOND OUTER HARBOR
SOUTHAMPTON SHOALS
CONDITION SURVEY
26 JANUARY 2022

Sheet
Reference
Number
1 of 4



PRELIMINARY ISSUE
THIS PLAN ISSUED FOR
ADVANCE INFORMATION ONLY



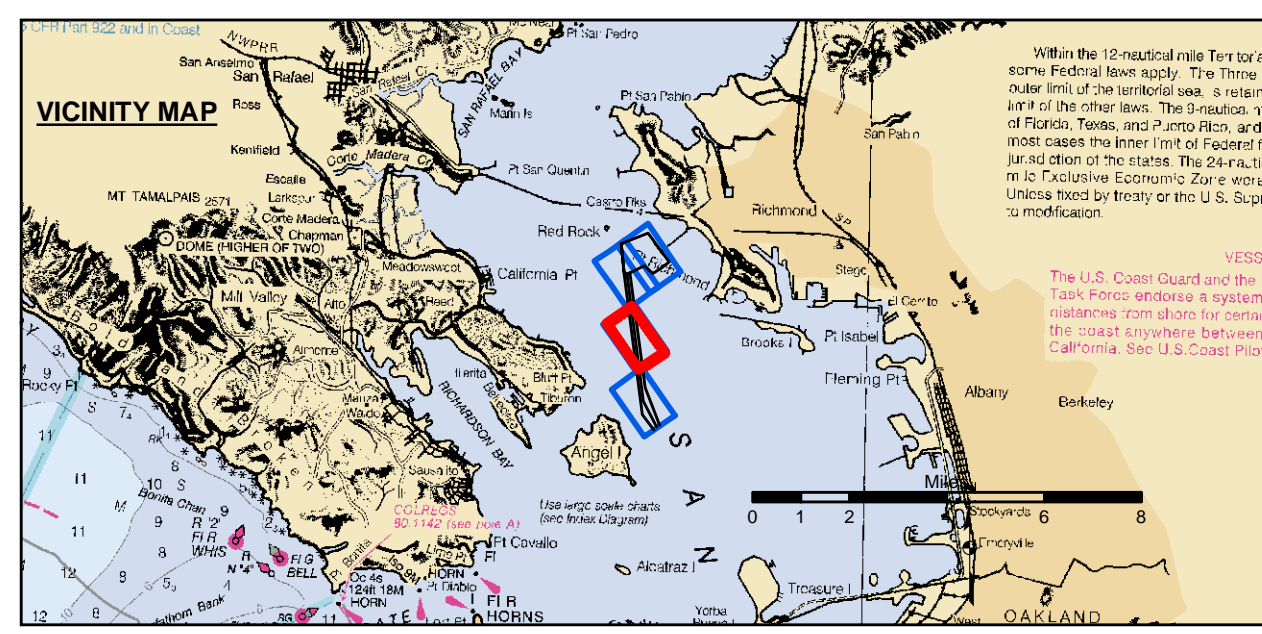
FLOOD
← EBB

US Army Corps of Engineers
San Francisco District
450 Golden Gate Ave
San Francisco, CA 94102

DISCLAIMER
The United States Government furnishes this information for the general information of the recipient and does not warrant, express or implied, the accuracy, completeness, or reliability of the information. The user is responsible for the results of any application of the data for other than the intended purpose. The recipient may not transfer these data to others without also transferring this disclaimer.

Chart Date:	Feb 01, 2022
Designed by:	PDT
Plotted by:	PDT
Checked by:	PDT
Drawn by:	PDT

ALAMEDA COUNTY
RICHMOND OUTER HARBOR
SOUTHAMPTON SHOALS
CONDITION SURVEY
26 JANUARY 2022

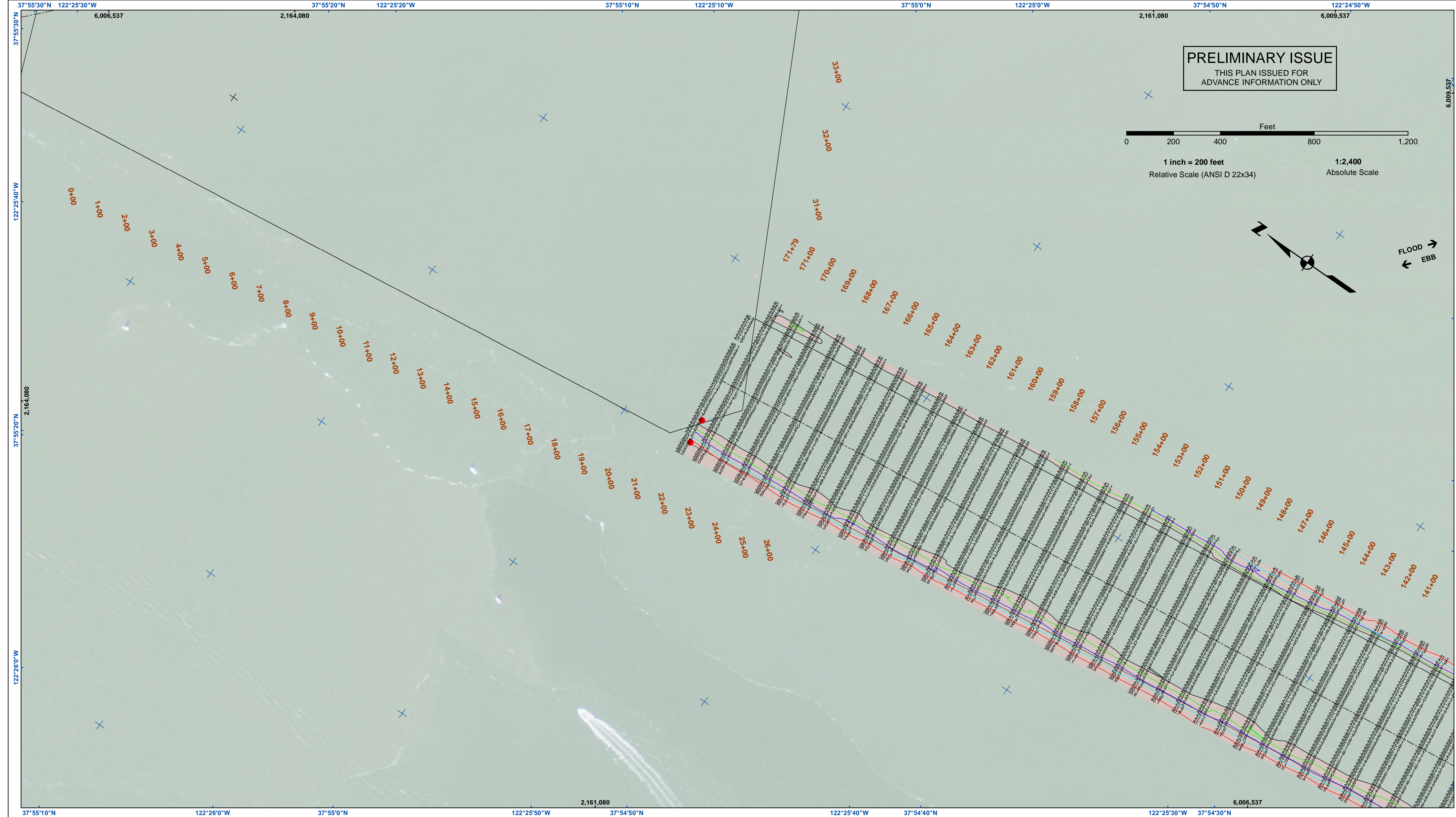


Federal Navigation Channel	Beacon, General	Contours
Shoaling Area	Obstruction Point	-45
Placement Area	Navigation Buoy	-44
Anchorage Area	Navigation Buoy	-43
Wreck Area	Shoalest Sounding*	-42
Submerged Wreck		-41
Angle Point		

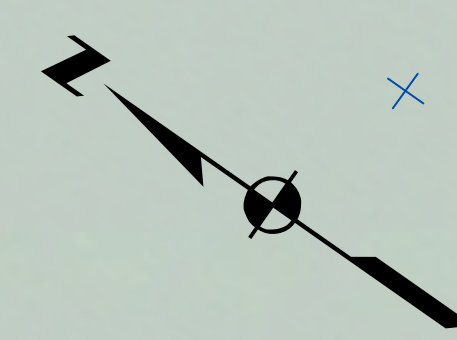
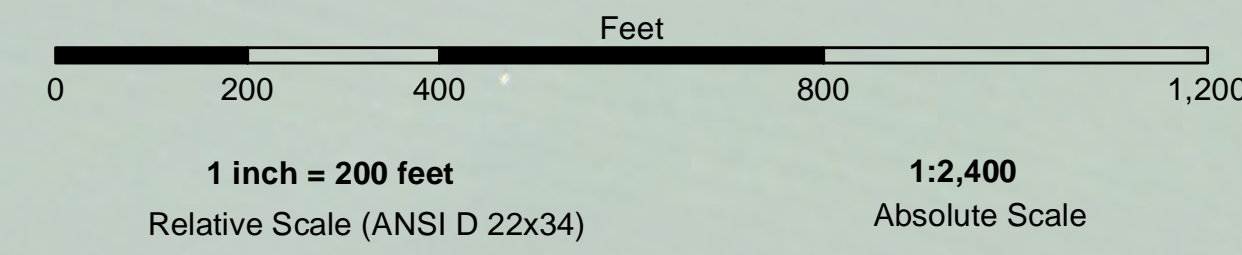
NOTES:
HORIZONTAL COORDINATE SYSTEM:
NORTH AMERICAN DATUM OF 1983 (NAD83), PROJECTED TO THE STATE PLANE COORDINATE SYSTEM (SPCS), CALIFORNIA ZONE III. DISTANCE UNITS IN U.S. SURVEY FEET.
VERTICAL DATUM:
SOUNDINGS ARE SHOWN IN FEET AND INDICATE DEPTHS BELOW MEAN LOWER LOW WATER.
THE INFORMATION DEPICTED ON THIS MAP REPRESENTS THE RESULTS OF A SURVEY CONDUCTED ON THE DATE INDICATED AND CAN ONLY BE CONSIDERED TO REPRESENT THE GENERAL CONDITION EXISTING AT THAT TIME.
*SHOALEST SOUNDING PER QUARTER PER REACH DRAWING NOT TO BE USED FOR NAVIGATION.
ONLY CHANNEL CONDITION AT DATE OF SURVEY.
THE LOCATION OF ALL NAVIGATION AIDS ARE BASED ON INFORMATION PROVIDED BY THE U.S. COAST GUARD. BUOY LOCATION REPRESENT THE POSITION OF THE SINKER ONLY.
SURVEYED BY THE CORPS OF ENGINEERS.

SOUNDINGS WERE TAKEN BY FATHOMETER AND ARE SHOWN TO THE NEAREST TENTH OF A FOOT.
SOUNDINGS ARE BASED ON THE DATUM OF MEAN LOWER LOW WATER AT THE LOCALITY.
BASE MAPS ARE USDA NAIP 2010.
THE PROJECT DEPTHS ARE AS FOLLOWS:
SOUTHAMPTON SHOALS CHANNEL -45 FEET.
LONG WHARF MANEUVERING AREA -45 FEET.
1:00 INDICATED THE NUMBER AND BEGINNING OF A LINE OF SOUNDINGS.
HORIZONTAL CONTROL:
POSITIONING: COAST GUARD DGPS
VERTICAL CONTROL:
SOUTHAMPTON SHOALS & LONG WHARF MANEUVERING BENCHMARK "10" 1937 ELEV 15.86 FT. MLLW.
AND BENCHMARK "11" 1946 ELEV 15.47 FT. MLLW.
TIDE GAUGE LOCATED AT TIBURON NET DEPOT.

Sheet
Number
2 of 4



PRELIMINARY ISSUE
THIS PLAN ISSUED FOR
ADVANCE INFORMATION ONLY



FLOOD
← EBB

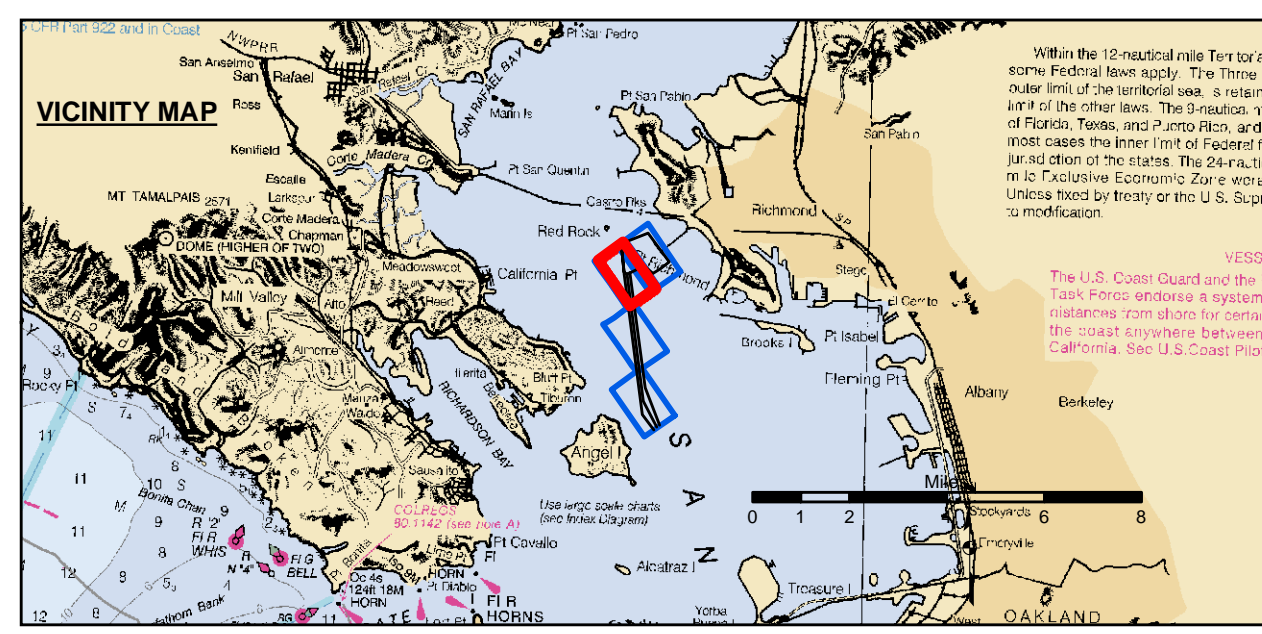


DISCLAIMER
The United States Government furnishes this information as a public service. It is not intended to be used for any purpose other than the intended purpose. The user is responsible for the results of any application of the data for other than the intended purpose. The United States Government makes no warranty, expressed or implied, concerning the accuracy, completeness, or reliability of the information furnished. The United States Government assumes no liability whatsoever to any person by reason of any use made thereof. These data belong to the Government. Therefore the user shall not disseminate or otherwise use these data for purposes other than those for which they were prepared. The user shall indemnify and hold the Government harmless from any and all claims, damages, and expenses, including reasonable attorneys' fees, which may be asserted against or incurred by the Government in connection with the use of these data by any person other than the intended user.

Chart Date:	Feb 01, 2022
Designed by:	PDT
Plotted by:	PDT
Checked by:	PDT
Drawn by:	PDT

ALAMEDA COUNTY
CALIFORNIA
RICHMOND OUTER HARBOR
SOUTHAMPTON SHOALS
CONDITION SURVEY
26 JANUARY 2022

Sheet
Reference
Number
3 of 4



Federal Navigation Channel	Beacon, General	Contours
Shoaling Area	Obstruction Point	
Placement Area	Navigation Buoy	
Anchorage Area	Navigation Buoy	
Wreck Area	Shoalest Sounding*	
Submerged Wreck		-45
Angle Point		-44
		-43
		-42
		-41

NOTES:
HORIZONTAL COORDINATE SYSTEM:
NORTH AMERICAN DATUM OF 1983 (NAD83), PROJECTED TO THE STATE PLANE COORDINATE SYSTEM (SPCS), CALIFORNIA ZONE III. DISTANCE UNITS IN U.S. SURVEY FEET.
VERTICAL DATUM:
SOUNDINGS ARE SHOWN IN FEET AND INDICATE DEPTHS BELOW MEAN LOWER LOW WATER.
THE INFORMATION DEPICTED ON THIS MAP REPRESENTS THE RESULTS OF A SURVEY CONDUCTED ON THE DATE INDICATED AND CAN ONLY BE CONSIDERED TO REPRESENT THE GENERAL CONDITION EXISTING AT THAT TIME.
*SHOALEST SOUNDING PER QUARTER PER REACH DRAWING NOT TO BE USED FOR NAVIGATION.
ONLY CHANNEL CONDITION AT DATE OF SURVEY.
THE LOCATION OF ALL NAVIGATION AIDS ARE BASED ON INFORMATION PROVIDED BY THE U.S. COAST GUARD. BUOY LOCATION REPRESENT THE POSITION OF THE SINKER ONLY.
SURVEYED BY THE CORPS OF ENGINEERS.

SOUNDINGS WERE TAKEN BY FATHOMETER AND ARE SHOWN TO THE NEAREST TENTH OF A FOOT.
SOUNDINGS ARE BASED ON THE DATUM OF MEAN LOWER LOW WATER AT THE LOCALITY.
BASE MAPS ARE USDA NAIP 2010.
THE PROJECT DEPTHS ARE AS FOLLOWS:
SOUTHAMPTON SHOALS CHANNEL -45 FEET.
LONG WHARF MANEUVERING AREA -45 FEET.
1:00 INDICATED THE NUMBER AND BEGINNING OF A LINE OF SOUNDINGS.
HORIZONTAL CONTROL:
HORIZONTAL POSITIONING: COAST GUARD DGPS
VERTICAL TIDES: INTERPOLATED FROM NOAA ONLINE TIDE STATIONS:
941 4293 - RICHMOND, CA
941 4290 - SAN FRANCISCO, CA
VERTICAL CONTROL:
(SOUTHAMPTON SHOALS & LONG WHARF MANEUVERING) BENCHMARK "10" 1937 ELEV 15.86 FT. MLLW.
AND BENCHMARK "11" 1946 ELEV 15.47 FT. MLLW.
TIDE GAUGE LOCATED AT TIBURON NET DEPOT.