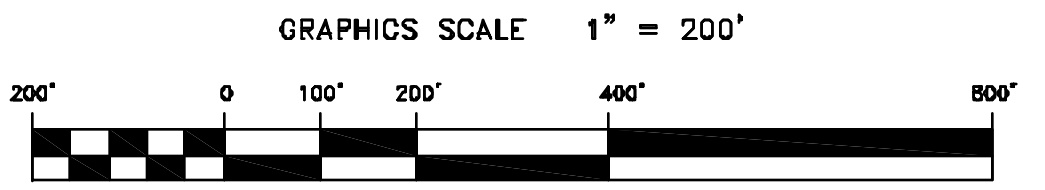
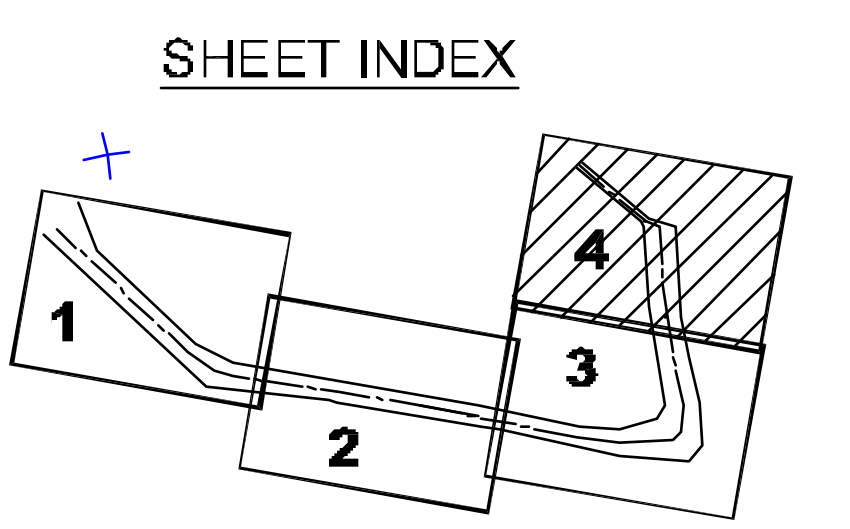


N.A.D. 1983 FEET COORDINATES		
CHANNEL	NORTH	EAST
21	2161813.88	6023718.08
22	2161805.13	6024470.88
23	2161829.13	6023669.08
24	2162011.81	6023871.48
25	2163218.84	6022130.29
26	2163371.37	6022258.12

N.A.D 1983 FEET COORDINATES			
CHANNEL	ANGLE	EAST	NORTH
02	2°58'25.7	6023299.00	
09	2°57'58.10	6023871.36	
10	2°58'36.75	6023781.60	
11	2°57'58.34	6022783.34	
12	2°58'25.20	6024797.57	
13	2°58'11.13	6023783.20	
14	2°58'30.05	6023733.87	
15	2°57'24.59	6024017.57	
16	2°57'20.38	6023296.30	
17	2°57'57.89	6024244.60	
18	2°58'59.74	6024797.23	
19	2°58'56.13	6023263.70	
20	2°58'00.15	6024628.95	

**PRELIMINARY ISSUE**  
THIS PLAN ISSUED FOR  
ADVANCE INFORMATION ONLY



Mark	Description	Date	Appr.

DESIGNED BY:	CHECKED BY:	DRAWN BY:
DATE:	SHEET NO.	DRAWING NO.
01/15/2009	1 OF 4	9 2 361
PREPARED UNDER THE DIRECTION OF LAURENCE M. FARRELL LT. COLONEL, C.E., DISTRICT ENGINEER		

SUBMITTED:	MC
APPROVAL RECOMMENDED:	
APPROVED:	

CALIFORNIA  
RICHMOND INNER HARBOR  
CONDITION SURVEY  
13-14 JANUARY 2009

Sheet reference number  
**C4**