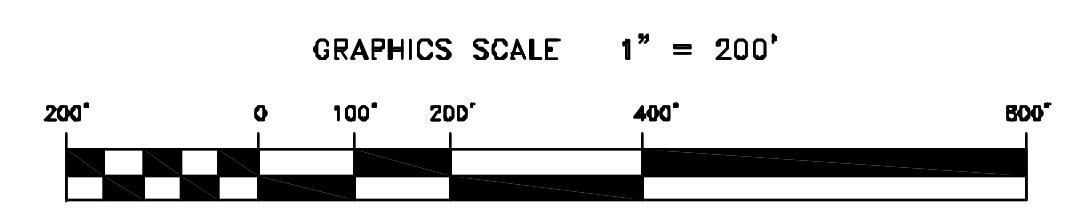
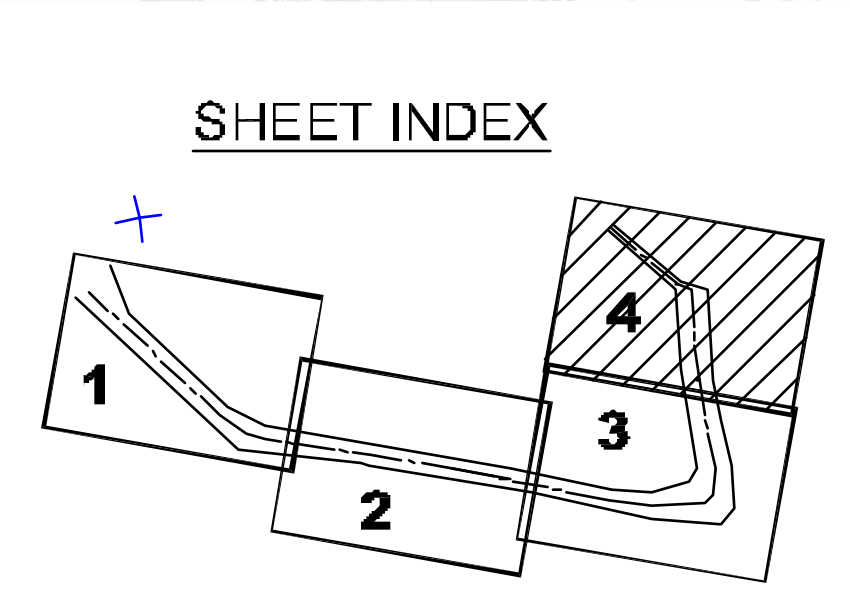


| N.A.D. 1983 FEET COORDINATES |            |            |
|------------------------------|------------|------------|
| CHANNEL /                    | NORTH      | EAST       |
| 21                           | 2161818.86 | 8028718.06 |
| 22                           | 2161806.18 | 8024470.68 |
| 23                           | 2161828.13 | 8023686.08 |
| 24                           | 2162011.81 | 8023671.48 |
| 25                           | 2162218.51 | 8022130.20 |
| 26                           | 2163871.87 | 8022258.12 |

| N.A.D 1983 FEET COORDINATES |               |            |
|-----------------------------|---------------|------------|
| CHANNEL /                   | EAST          | NORTH      |
| 02                          | 2' 588' 72.57 | 8028299.00 |
| 09                          | 2' 575' 58.10 | 8027987.38 |
| 10                          | 2' 583' 66.75 | 8027878.80 |
| 11                          | 2' 570' 58.34 | 8027782.34 |
| 12                          | 2' 582' 56.20 | 8027497.57 |
| 13                          | 2' 589' 77.13 | 8027178.20 |
| 14                          | 2' 586' 30.05 | 8026733.87 |
| 15                          | 2' 572' 43.89 | 8026407.87 |
| 16                          | 2' 575' 20.87 | 8026206.38 |
| 17                          | 2' 575' 77.89 | 8024244.88 |
| 18                          | 2' 586' 98.74 | 8024184.28 |
| 19                          | 2' 588' 96.13 | 8023853.70 |
| 20                          | 2' 587' 00.15 | 8023628.88 |

**PRELIMINARY ISSUE**  
THIS PLAN ISSUED FOR  
ADVANCE INFORMATION ONLY



**US Army Corps of Engineers**  
San Francisco District  
1455 Market Street  
San Francisco, CA 94103

| Mark | Description | Date | Appr. |
|------|-------------|------|-------|
|      |             |      |       |
|      |             |      |       |
|      |             |      |       |
|      |             |      |       |

|  |                     |                       |                                  |             |                            |            |        |              |     |     |
|--|---------------------|-----------------------|----------------------------------|-------------|----------------------------|------------|--------|--------------|-----|-----|
| DESIGNED BY:   | LAURENCE M. FARRELL | DATE:                 | 3/11/2010                        | CHECKED BY: | TVW                        | SHEET NO.: | 1 OF 4 | DRAWING NO.: | 9 2 | XXX |
| PREPARED UNDER THE DIRECTION OF<br>LAURENCE M. FARRELL<br>LT. COLONEL, C.E., DISTRICT ENGINEER |                     |                       |                                  |             |                            |            |        |              |     |     |
| SUBMITTED:   | PDT                 | APPROVAL RECOMMENDED: | CHIEF, Technical Support Section | APPROVED:   | CHIEF, Construction Branch |            |        |              |     |     |

ALAMEDA COUNTY  
RICHMOND INNER HARBOR  
CONDITION SURVEY  
25-26 FEBRUARY 2010

Sheet reference number  
**C4**