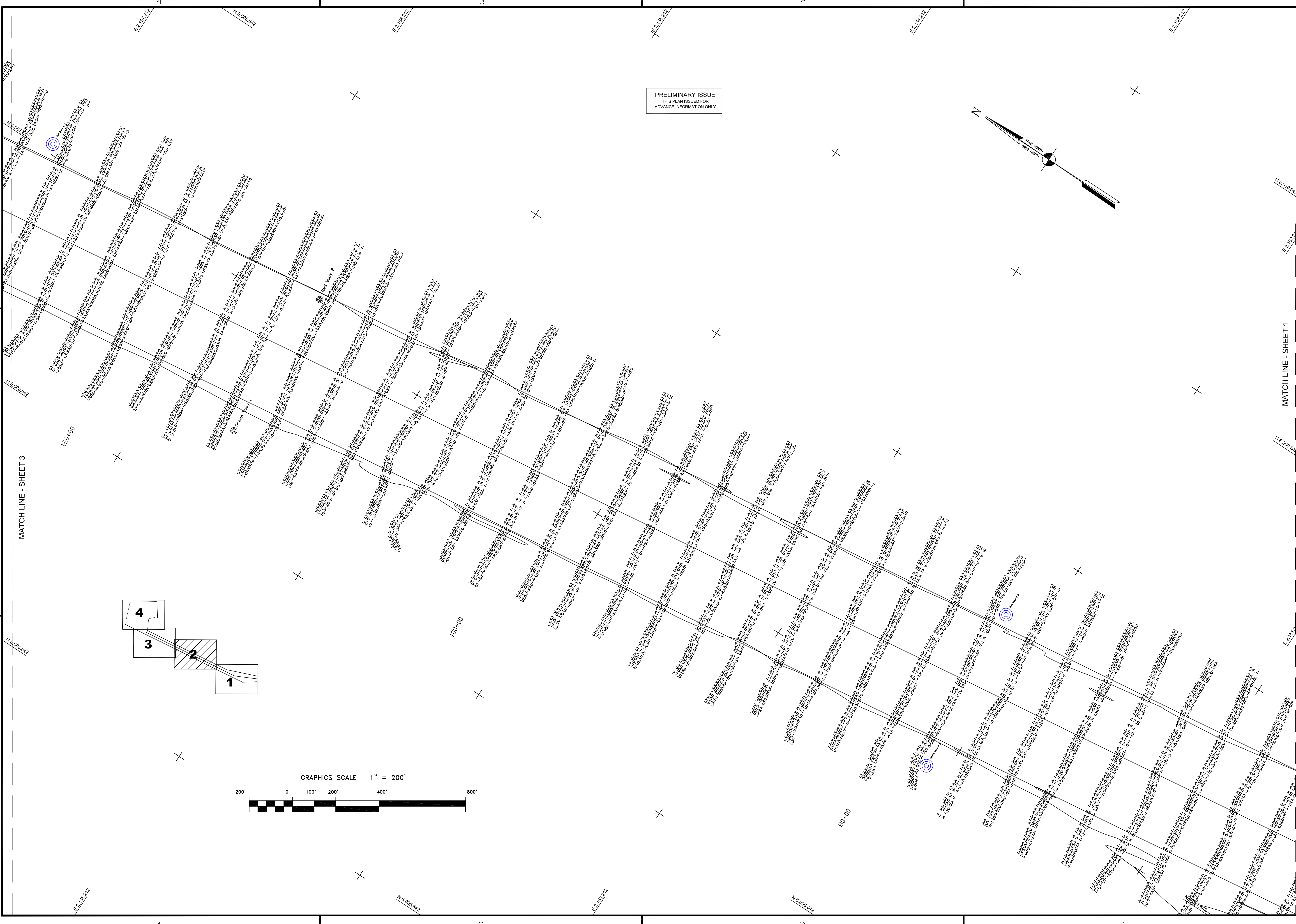
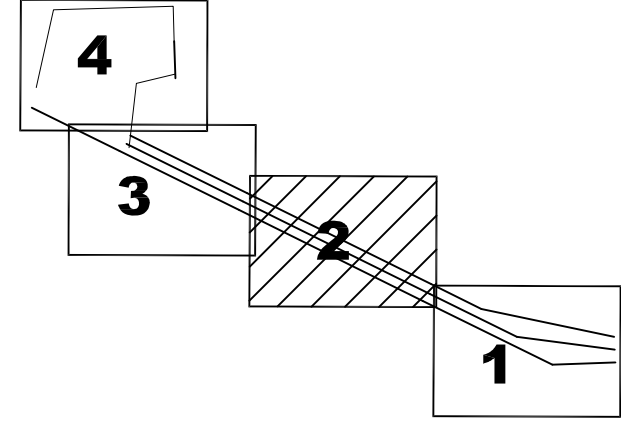
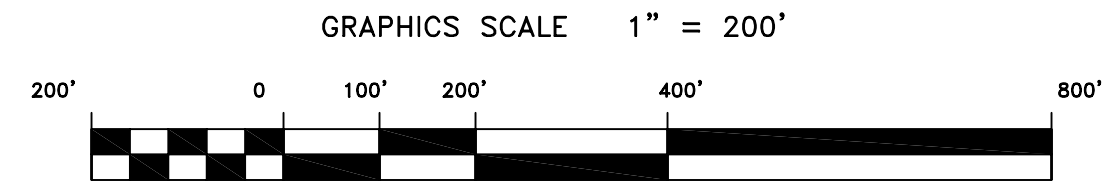
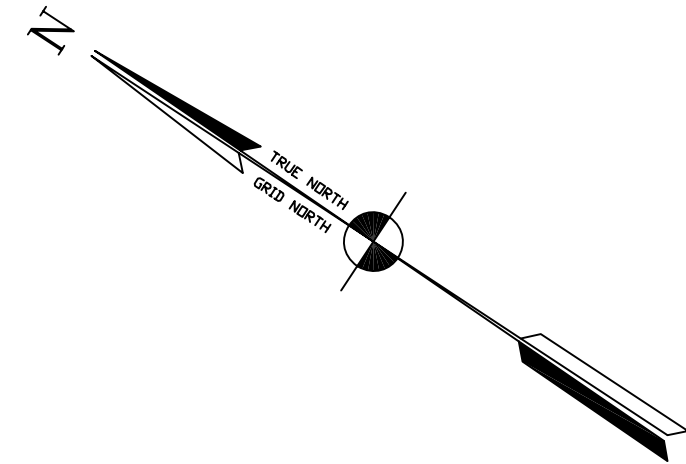


PRELIMINARY ISSUE  
THIS PLAN ISSUED FOR  
ADVANCE INFORMATION ONLY



  
US Army Corps  
of Engineers  
San Francisco District  
353 Market Street  
San Francisco, CA 94105

Mark	Description	Date	Appr.

DESIGNED BY:	CHECKED BY:	DRAWN BY:
Hydro Survey Team Leader	TVM	EC

DATE:	SHEET NO.	DRAWING NO.
07/24/2007	2 OF 4	9 2 352

PREPARED UNDER THE DIRECTION OF  
CRAIG W. KILEY  
LT. COLONEL, C.E., DISTRICT ENGINEER

SUBMITTED:   
APPROVAL RECOMMENDED:   
APPROVED:   
Chief, Construction Branch

CALIFORNIA  
CONTRA COSTA COUNTY  
RICHMOND HARBOR  
SOUTH HAMPTON SHOALS  
POSTDREDGE SURVEY  
13 & 18 JULY 2007

Sheet  
reference  
number  
**C2**